



U.S. HIGHWAY 82 / W CLEVELAND ST
(100' R/W)

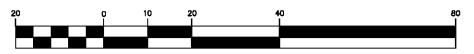
JOHNS LANE
(50' R/W)

JACKSON STREET
(40' R/W)

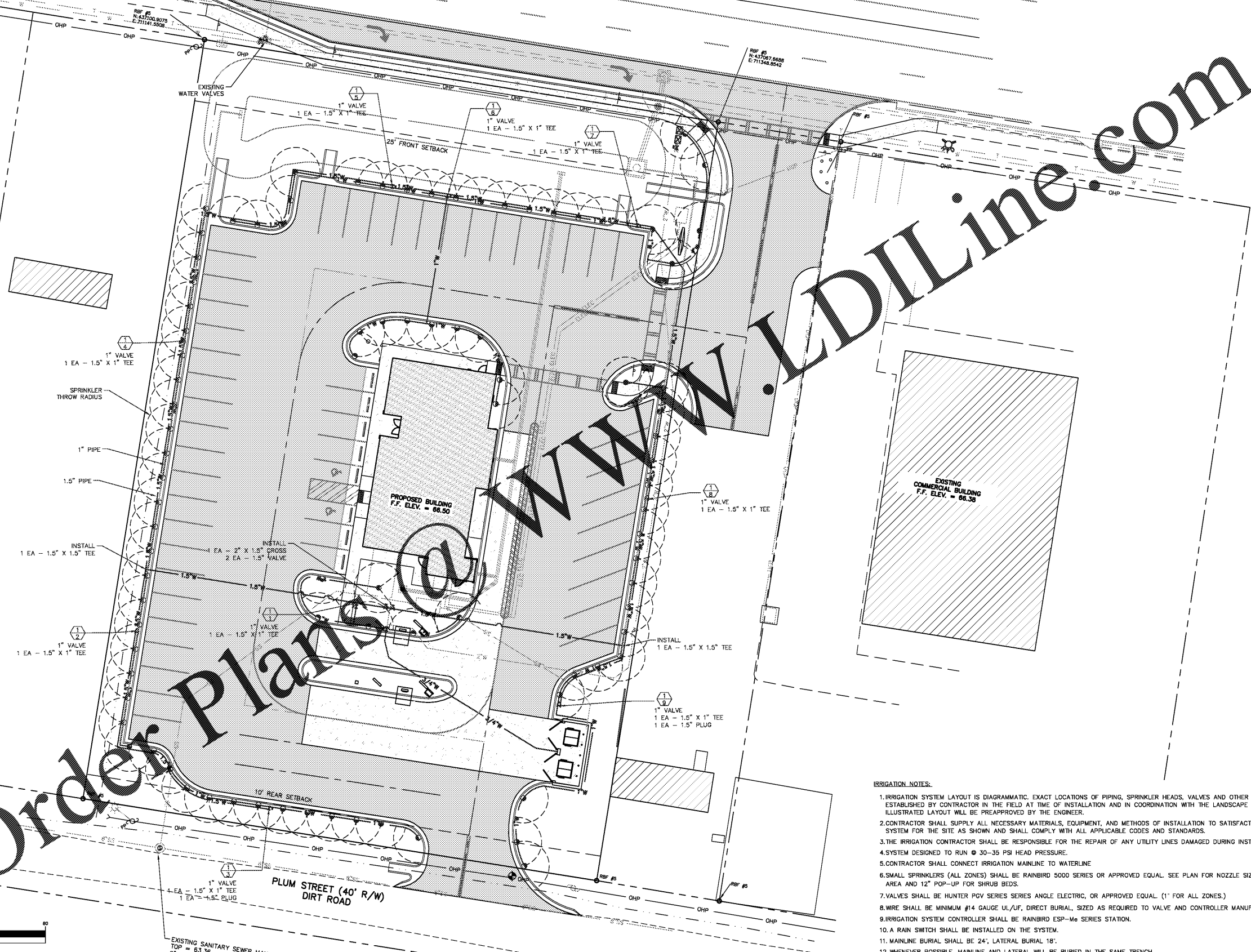
PLUM STREET (40' R/W)
DIRT ROAD

Order Plans @ www.LDILine.com

GRAPHIC SCALE



(IN FEET)
1 inch = 20 ft.



IRRIGATION NOTES:

1. IRRIGATION SYSTEM LAYOUT IS DIAGRAMMATIC. EXACT LOCATIONS OF PIPING, SPRINKLER HEADS, VALVES AND OTHER COMPONENTS SHALL BE ESTABLISHED BY CONTRACTOR IN THE FIELD AT TIME OF INSTALLATION AND IN COORDINATION WITH THE LANDSCAPE PLAN. DEVIATIONS FROM THE ILLUSTRATED LAYOUT WILL BE PREAPPROVED BY THE ENGINEER.
2. CONTRACTOR SHALL SUPPLY ALL NECESSARY MATERIALS, EQUIPMENT, AND METHODS OF INSTALLATION TO SATISFACTORILY COMPLETE AN IRRIGATION SYSTEM FOR THE SITE AS SHOWN AND SHALL COMPLY WITH ALL APPLICABLE CODES AND STANDARDS.
3. THE IRRIGATION CONTRACTOR SHALL BE RESPONSIBLE FOR THE REPAIR OF ANY UTILITY LINES DAMAGED DURING INSTALLATION.
4. SYSTEM DESIGNED TO RUN @ 30-35 PSI HEAD PRESSURE.
5. CONTRACTOR SHALL CONNECT IRRIGATION MAINLINE TO WATERLINE.
6. SMALL SPRINKLERS (ALL ZONES) SHALL BE RAINBIRD 5000 SERIES OR APPROVED EQUAL. SEE PLAN FOR NOZZLE SIZES. USE 4" POP-UP FOR GRASS AREA AND 12" POP-UP FOR SHRUB BEDS.
7. VALVES SHALL BE HUNTER PGV SERIES SERIES ANGLE ELECTRIC, OR APPROVED EQUAL. (1" FOR ALL ZONES.)
8. WIRE SHALL BE MINIMUM #14 GAUGE UL/UF, DIRECT BURIAL, SIZED AS REQUIRED TO VALVE AND CONTROLLER MANUFACTURER'S CHARTS.
9. IRRIGATION SYSTEM CONTROLLER SHALL BE RAINBIRD ESP-Me SERIES STATION.
10. A RAIN SWITCH SHALL BE INSTALLED ON THE SYSTEM.
11. MAINLINE BURIAL SHALL BE 24"; LATERAL BURIAL 18".
12. WHENEVER POSSIBLE, MAINLINE AND LATERAL WILL BE BURIED IN THE SAME TRENCH.
13. IRRIGATION CONTRACTOR SHALL SUBMIT RECORD DRAWING AND OPERATIONAL PROCEDURES MANUALS TO OWNER.
14. **GUARANTEE:** THE IRRIGATION CONTRACTOR SHALL GUARANTEE ALL WORKMANSHIP, MATERIALS, FIXTURES AND IRRIGATION EQUIPMENT TO BE FREE OF DEFECTS FOR A PERIOD OF ONE (1) YEAR FROM DATE OF FINAL ACCEPTANCE OF THE PROJECT. CONTRACTOR SHALL REPLACE ANY PART OR PARTS FOUND TO BE DEFECTIVE WITHIN THE PERIOD OF THE GUARANTEE AT NO COST TO THE OWNER EXCEPT REPAIRS OR REPLACEMENT NECESSITATED BY OTHERS.

EXISTING SANITARY SEWER MANHOLE
TOP = 63.36
8" INV. = 55.47



THIS DRAWING IS THE PROPERTY OF T. R. LONG ENGINEERING, P.C. AND MAY NOT BE REPRODUCED, COPIED, OR TRANSMITTED IN ANY MANNER WITHOUT THE EXPRESS WRITTEN PERMISSION OF T. R. LONG ENGINEERING, P.C.
THE CONTRACTOR SHALL VERIFY ALL DIMENSIONS CONTAINED WITHIN THIS SET OF DOCUMENTS AND SHALL REPORT ANY DISCREPANCIES TO T. R. LONG ENGINEERING, P.C. FOR IMMEDIATE RESOLUTION.



T. R. Long Engineering, P.C.
SAVANNAH
306 Commercial Drive
Savannah, Georgia 31406
Office (912) 335-1046



HINESVILLE
114 North Commerce St.
Hinesville, Georgia 31313
Office (912) 368-5664

SPECIFIC DEVELOPMENT PLAN FOR BURGER KING NAHANTA, GEORGIA

SHEET NAME:
IRRIGATION PLAN

REVISIONS:

1.	
2.	
3.	
4.	
5.	
6.	
7.	
8.	
9.	
10.	

INITIAL DATE: 4/01/2019
DRAWN BY: BDR
CHECKED BY: TR L
PROJECT #: 2018-147

SHEET NUMBER:
C-15

GEORGIABIT.COM DIAL 811

GENCCF 000055084

www.trlongeng.com

TAX PARCEL NUMBER: XXXX NAHANTA, BRANTLEY COUNTY, GA