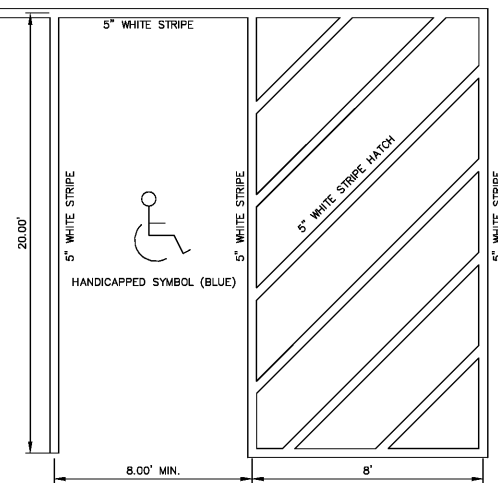
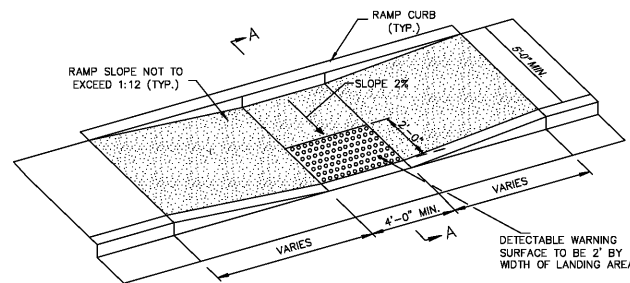


NOTES:
HANDICAPPED PARKING SPACE AND ACCESS SHALL BE CONSTRUCTED OF 5" THICK CONCRETE.

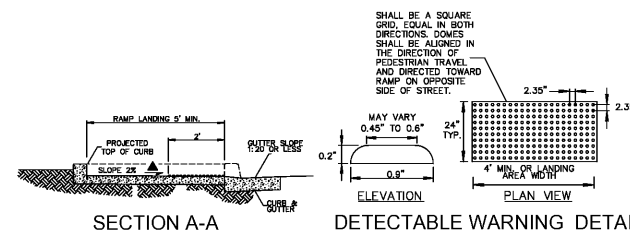
SIGN WITH THE INTERNATIONAL ACCESS SYMBOL DESIGNATING SPACE FOR ACCESSIBLE PARKING AND TEXT THAT READS "VAN ACCESSIBLE" (PER ADA REQUIREMENTS)



HANDICAP STRIPING DETAIL
SCALE: N.T.S.

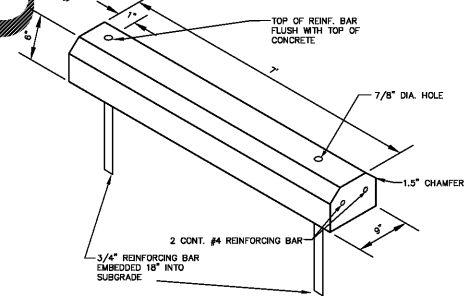


ISOMETRIC VIEW OF RAMP

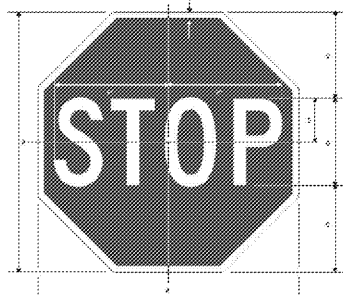
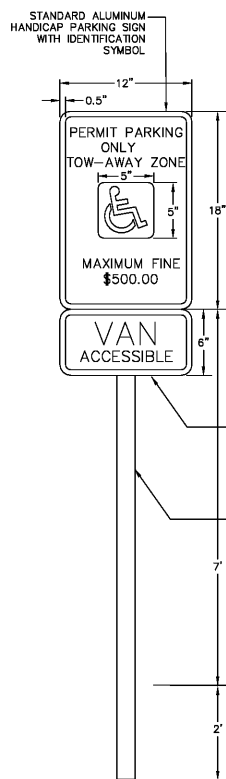


- NOTES:
- HANDICAP RAMP CONSTRUCTION SHALL CONFORM TO ALL FEDERAL, STATE AND CITY OF HINESVILLE CODES AND SPECIFICATIONS.
 - SURFACES SHALL MEET THE GUIDELINES OF THE ADA STANDARDS FOR ACCESSIBILITY, APPENDIX A, PART 3B.
 - THE SLOPE OF THE GUTTER MUST NOT EXCEED 1:20 ADJACENT TO THE RAMP.
 - DETECTABLE WARNINGS SHALL CONSIST OF RAISED TRUNCATED DOMES WITH A DIAMETER OF NOMINAL 0.9 INCHES, A HEIGHT OF NOMINAL 0.2 INCHES AND A CENTER TO CENTER SPACING OF NOMINAL 2.35 INCHES AND SHALL CONTRAST VISUALLY WITH ADJOINING SURFACES. IF THE SIDEWALK AND RAMP ARE CONSTRUCTED OF CONCRETE, THE WARNING AREA SHALL BE RED BRICK IN COLOR. IF THE SIDEWALK AND RAMP ARE CONSTRUCTED OF RED BRICK, THE WARNING AREA SHALL BE GRAY IN COLOR. THE COLOR USED TO PROVIDE CONTRAST SHALL BE AN INTEGRAL PART OF THE WALKING SURFACE.

HANDICAP RAMP DETAIL
SCALE: N.T.S.

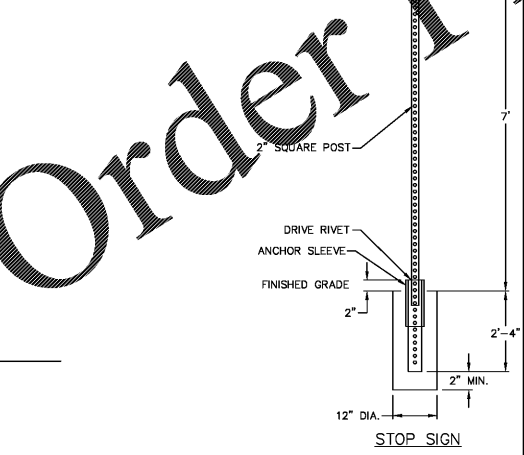


PRE-CAST WHEEL STOP
SCALE: N.T.S.

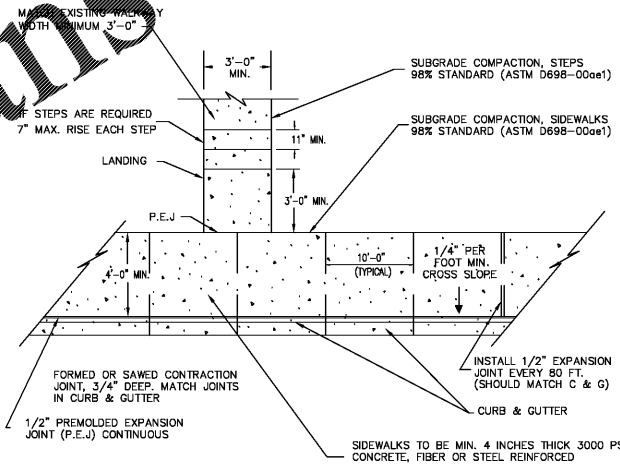


"STOP" SIGN (R1-1)

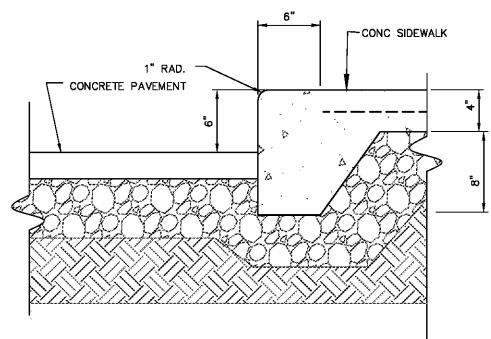
| | | | | | | | | | | | | | | | | | | | | | | | | | | | | | | | | | | | | | | | | | | | | | | | | | | | | | | | | | | | | | | | | | | | | | | | | | | | | | | | | | | | | | | | | | | | | | | | | | | | |
|---|---|---|---|---|---|---|---|---|----|----|----|----|----|----|----|----|----|----|----|----|----|----|----|----|----|----|----|----|----|----|----|----|----|----|----|----|----|----|----|----|----|----|----|----|----|----|----|----|----|----|----|----|----|----|----|----|----|----|----|----|----|----|----|----|----|----|----|----|----|----|----|----|----|----|----|----|----|----|----|----|----|----|----|----|----|----|----|----|----|----|----|----|----|----|----|----|----|----|-----|
| 1 | 2 | 3 | 4 | 5 | 6 | 7 | 8 | 9 | 10 | 11 | 12 | 13 | 14 | 15 | 16 | 17 | 18 | 19 | 20 | 21 | 22 | 23 | 24 | 25 | 26 | 27 | 28 | 29 | 30 | 31 | 32 | 33 | 34 | 35 | 36 | 37 | 38 | 39 | 40 | 41 | 42 | 43 | 44 | 45 | 46 | 47 | 48 | 49 | 50 | 51 | 52 | 53 | 54 | 55 | 56 | 57 | 58 | 59 | 60 | 61 | 62 | 63 | 64 | 65 | 66 | 67 | 68 | 69 | 70 | 71 | 72 | 73 | 74 | 75 | 76 | 77 | 78 | 79 | 80 | 81 | 82 | 83 | 84 | 85 | 86 | 87 | 88 | 89 | 90 | 91 | 92 | 93 | 94 | 95 | 96 | 97 | 98 | 99 | 100 |
|---|---|---|---|---|---|---|---|---|----|----|----|----|----|----|----|----|----|----|----|----|----|----|----|----|----|----|----|----|----|----|----|----|----|----|----|----|----|----|----|----|----|----|----|----|----|----|----|----|----|----|----|----|----|----|----|----|----|----|----|----|----|----|----|----|----|----|----|----|----|----|----|----|----|----|----|----|----|----|----|----|----|----|----|----|----|----|----|----|----|----|----|----|----|----|----|----|----|----|-----|



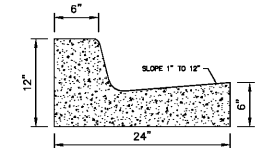
SIGN DETAILS
SCALE: N.T.S.



SIDEWALK DETAIL
SCALE: N.T.S.



TURN DOWN SIDEWALK DETAIL
SCALE: N.T.S.



STANDARD TYPE CURB & GUTTER DETAIL
SCALE: N.T.S.



THIS DRAWING IS THE PROPERTY OF T. R. LONG ENGINEERING, P.C. AND MAY NOT BE REPRODUCED, COPIED, OR TRANSMITTED IN ANY MANNER WITHOUT THE EXPRESS WRITTEN PERMISSION OF T. R. LONG ENGINEERING, P.C.



T. R. Long Engineering, P.C.
SAVANNAH
306 Commercial Drive
Savannah, Georgia 31406
Office (912) 335-1046

HINESVILLE
114 North Commerce St.
Hinesville, Georgia 31313
Office (912) 368-5664

www.trlongeng.com

SPECIFIC DEVELOPMENT
PLAN FOR BURGER KING
NAHANTA, GEORGIA

SHEET NAME: DETAILS

REVISIONS:

| | |
|-----|--|
| 1. | |
| 2. | |
| 3. | |
| 4. | |
| 5. | |
| 6. | |
| 7. | |
| 8. | |
| 9. | |
| 10. | |

INITIAL DATE: 4/01/2019
DRAWN BY: BDP
CHECKED BY: TR L
PROJECT #: 2018-147

SHEET NUMBER:
C-09