

ISSUE	DATE	DESCRIPTION
0	04/01/19	ISSUED FOR PERMIT/BID

PROJECT INFORMATION

PROJECT NO:	V2W.26122
DATE:	AS NOTED
SCALE:	T. COATNEY
DRAWN BY:	K. CRAIG
CHECKED BY:	

SHEET TITLE

LIGHTING PLAN

SHEET NUMBER

E-3

LIGHTING CONTROL GENERAL NOTES

- QUANTITY OF TRACK HEADS SHALL BE AS SHOWN ON DRAWINGS, UNLESS OTHERWISE DETERMINED BY DESIGN AND VERIZON WIRELESS PROJECT MANAGER.
- EMERGENCY LIGHT FIXTURE BATTERY PACKS SHALL BE WIRED AHEAD OF SWITCHING.
- ALL SWITCHING SHALL BE MOUNTED VERTICALLY WITH CENTERLINE AT 46" UNLESS NOTED OTHERWISE.
- VERIZON WIRELESS WILL PROVIDE ALL LIGHTING FIXTURES UNLESS NOTED OTHERWISE. CONTRACTOR TO COORDINATE ORDERING WITH VERIZON WIRELESS.
- REFERENCE ARCHITECTURAL PLANS FOR FINAL LIGHTING LOCATIONS.
- OCCUPANCY SENSORS SHALL TIME OUT AFTER 15 MINUTES. TYP OF ALL SPACES WITH OCCUPANCY SENSORS.

OCCUPANCY SENSORS SHALL BE POSITIONED AND ADJUSTED SO THAT STATUS INDICATOR BLINKS WHEN ROOM IS OCCUPIED AND ACTIVATES WHEN A PERSON BREAKS THE PLANE OF THE DOOR ENTERING THAT SPECIFIC CONTROLLED SPACE.

OCCUPANCY SENSORS SHALL NOT TURN ON LIGHTING WHEN A PERSON PASSES BY THE OPENED DOOR TO THE CONTROLLED SPACE.

ENERGY CODE LIGHTING CONTROL SCHEDULE

- ALL LIGHTING FIXTURES IN DAYLIGHT AREAS SHALL BE CONNECTED TO THE DAYLIGHT SENSOR SUCH THAT LIGHTING FIXTURES DIM WHEN DAYLIGHT IS AVAILABLE.
- CEILING MOUNTED DAYLIGHT SENSOR WITH AUTOMATIC DIMMING. LOCATE DAYLIGHT SENSOR PER MANUFACTURER'S REQUIREMENTS.
- ROOM CONTROLLER. CONNECT TO DAYLIGHT SENSOR AND STANDARD LIGHTING CIRCUITRY PER MANUFACTURER'S REQUIREMENTS. ROOM CONTROLLER TO TURN LIGHT FIXTURES OFF WITHIN THE DAYLIGHT ZONE.
- PROVIDE 480W CURRENT LIMITER DEVICE COMPATIBLE WITH TRACK FIXTURE. INSTALL AT THE BEGINNING OF THE TRACK LIGHTING CIRCUITRY. INSTALL PER MANUFACTURER'S RECOMMENDATIONS.

REFERENCE ARCHITECTURAL PLAN FOR LIGHTING FIXTURE MOUNTING HEIGHT, TYP

MAINTAIN EXISTING LIGHTING CIRCUIT CONTROLS, TYP

UTILIZE ALL EXISTING CIRCUITRY DISCONNECTED FROM LIGHTING BEING REMOVED AND REUSE CIRCUITRY AS NEEDED. ADD NEW CIRCUITS ONCE ALL EXISTING CIRCUITRY HAS BEEN UTILIZED IF NEEDED. ADDITIONAL CIRCUITS THAT HAVE BEEN ABANDONED SHALL BE REMOVED BACK TO BREAKER, BREAKER TURNED OFF AND LABEL BREAKER AS "SPARE". LABEL PANELBOARD SCHEDULE TO REFLECT CIRCUITRY REVISIONS.

CEILING MOUNTED WINDOW DISPLAY RECEPTACLES TO RE-INSTALL AFTER NEW CEILING IS IN PLACE, TYP.

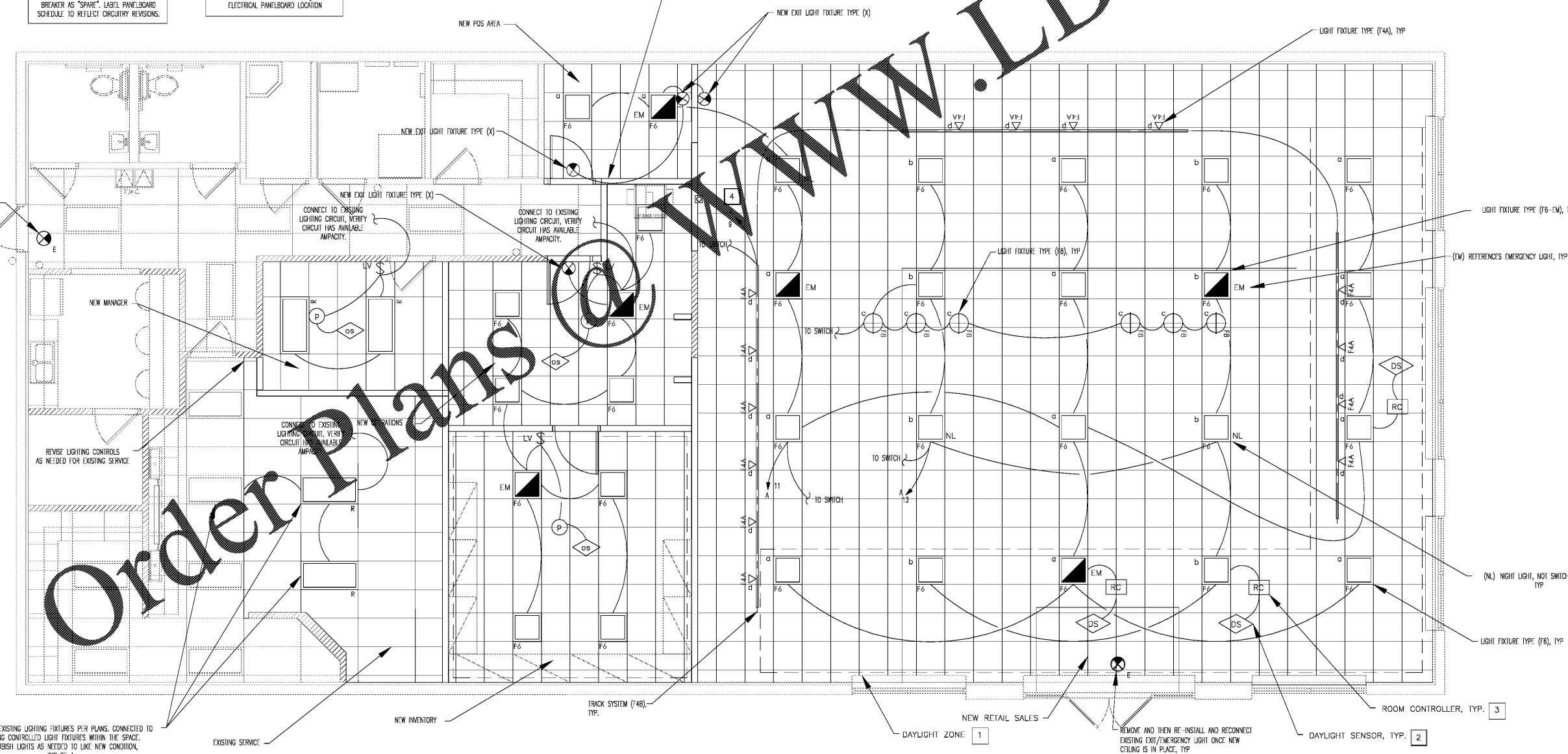
REFERENCE SHEET E1.0, FOR LIGHTING FIXTURE SCHEDULE AND LIGHTING CONTROLS SCHEDULE

REFERENCE SHEET E5.0, FOR ELECTRICAL PANELBOARD SCHEDULES

REFERENCE SHEET E1.0, DETAIL #1 FOR ELECTRICAL PANELBOARD LOCATION

LETTER REPRESENTS LIGHTING FIXTURE CONTROL DESTINATION, COORDINATE WITH LIGHT FIXTURES, TYP

a b c d  
\$os\$os\$ \$



RELOCATE EXISTING LIGHTING FIXTURES PER PLANS, CONNECTED TO EXISTING CONTROLLED LIGHT FIXTURES WITHIN THE SPACE. RETURNISH LIGHTS AS NEEDED TO LIKE NEW CONDITION, TYP OF 4.

EXISTING SERVICE

NEW INVENTORY

TRACK SYSTEM (F48), TYP.

DAYLIGHT ZONE 1

NEW RETAIL SALES

REMOVE AND THEN RE-INSTALL AND RECONNECT EXISTING EXIT/EMERGENCY LIGHT ONCE NEW CEILING IS IN PLACE, TYP.

ROOM CONTROLLER, TYP. 3

Order Plans @ www.LDILine.com

www.LDILine.com

Verizon Wireless Johnson City, TN 149 Fitness Way Johnson City, TN 37604  
Project No. V2W.26122  
Date: 04/01/19  
Scale: AS NOTED  
Drawn By: T. COATNEY  
Checked By: K. CRAIG