

ISSUE	DATE	DESCRIPTION
-	03/25/19	ISSUED FOR PERMIT

PROJECT INFORMATION

PROJECT NO:	V2W.26121
DATE:	03/13/2019
SCALE:	AS NOTED
DRAWN BY:	N.GLUKHOMAN
CHECKED BY:	V.ALVAREZ

SHEET TITLE

REFLECTED
 CEILING PLAN,
 CEILING &
 LIGHTING DETAILS

SHEET NUMBER

CEILING PLAN NOTES REFER TO T-001 FOR GENERAL NOTES.

- ALL CEILING HEIGHTS REFERENCED ARE ABOVE RELATIVE FINISHED FLOOR ELEVATION DIRECTLY BELOW.
- ALL CEILING MOUNTED LIGHT FIXTURES SHALL BE CENTERED ON DRYWALL CEILING AND/OR ACOUSTICAL CEILING UNLESS SHOWN OTHERWISE. CENTER ALL SUSPENDED LIGHT FIXTURES AS SHOWN IN PLAN.
- LOCATE CEILING GRID IN EACH ROOM AREA AS SHOWN.
- REFER ELECTRICAL DRAWINGS FOR LIGHT FIXTURE SCHEDULE.
- GENERAL CONTRACTOR TO COORDINATE WITH ALL OTHER TRADES TO MINIMIZE CLASHES AND TO ENSURE COMPLIANCE WITH ALL FIRE/MARSHALL REQUIREMENTS.
- LIGHT FIXTURES SHOWN ON CEILING TILE ONLY ARE TO BE MOUNTED ON THE CENTER OF THE TILE, U.N.O.
- PATCH, REPAIR OR REPLACE ALL CEILING IN KIND; PREP ALL CEILING FOR NEW FINISHES/PAINT.
- ALL DIMENSIONS ARE FINISH DIMENSIONS.
- LOCATION AND QUALITY OF ALL EXISTING LIGHTING AND DIFFUSERS SHALL BE 99% IN FIELD BY GENERAL CONTRACTOR.

KEYNOTES NOT ALL KEYNOTES BELOW MAY BE USED; REFER TO PLAN.

EX=EXISTING TO REMAIN
 R=EXISTING TO BE RELOCATED

- NEW GRID AND TILE.
- INFILL/PATCH GRID AND TILE AS REQUIRED IN THIS AREA TO MATCH EXISTING.
- NEW TRACK LIGHTING AND TRACK HEADS.
- NEW PENDENT LIGHT FIXTURE CENTERED OVER TABLE.
- NEW LIGHT FIXTURE.
- NEW HVAC DIFFUSER, GC TO MATCH EXISTING COLOR AND STYLE.
- EXISTING SECURITY SHUTTERS TO REMAIN.
- EXISTING LIGHT FIXTURES TO REMAIN.
- EXISTING HVAC DIFFUSERS TO REMAIN.
- EXISTING GRID AND CEILING TILE TO REMAIN. PATCH AND REPAIR AS REQUIRED.
- NEW GYP BD HEADER @ 8'-0" AFF.

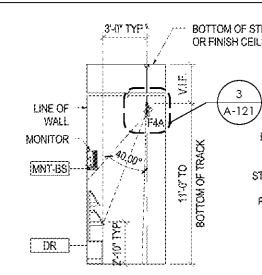
CEILING FINISH NOTE

- REFER TO FINISH SCHEDULES AND DETAILS ON SHEET A-131 FOR CEILING FINISHES.
- DIFFUSERS, GRILLES, SPRINKLERS AND SPEAKERS IN FRONT OF THE HOUSE CEILING SHALL BE PAINTED TO MATCH CEILING (WHITE)

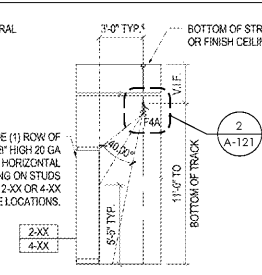
RCP LEGEND NOT ALL SYMBOLS MAY BE USED.

	CEILING FINISH MATERIAL (SEE FINISH PLAN) HEIGHT ABOVE FINISHED FLOOR (A.F.F.)
	EXIT SIGN LOCATION OF TEXT
	EMERGENCY FLOOD LIGHT
	RECESSED DOWNLIGHT (CEILING MOUNT)
	12" PENDANT LIGHT FIXTURE; MOUNT BOTTOM OF FIXTURE @ 65" A.F.F. - F9
	14" PENDANT LIGHT FIXTURE; MOUNT BOTTOM OF FIXTURE @ 65" A.F.F. - F8
	2x2 TROFFER LIGHT FIXTURE - F6
	2x4 TROFFER LIGHT FIXTURE
	ADJUSTABLE TRACK HEAD MOUNTED TO BASIC TRACK - F4A
	SUPPLY DIFFUSER
	RETURN
	NEW FURNITURE FIXTURE LAYOUT

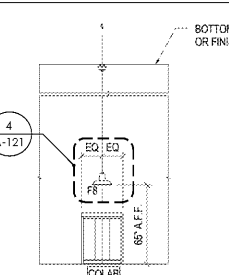
DIRECTIONAL LIGHTING DIAGRAM FOR DR FIXTURE



LIGHTING DIAGRAM FOR FIXTURES 2-XX & 4-XX

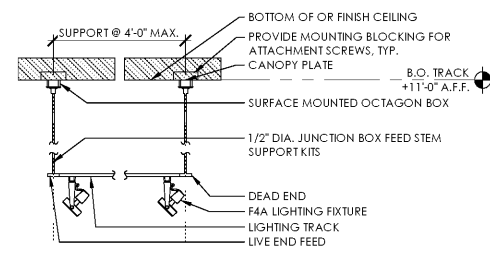


PENDANT LIGHT F8 LOCATION FOR COLAB

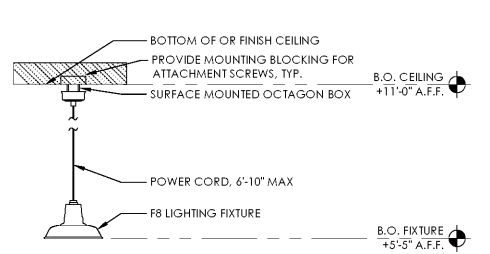


TYPICAL LIGHTING DETAILS - DIAGRAMS
 SCALE: NTS

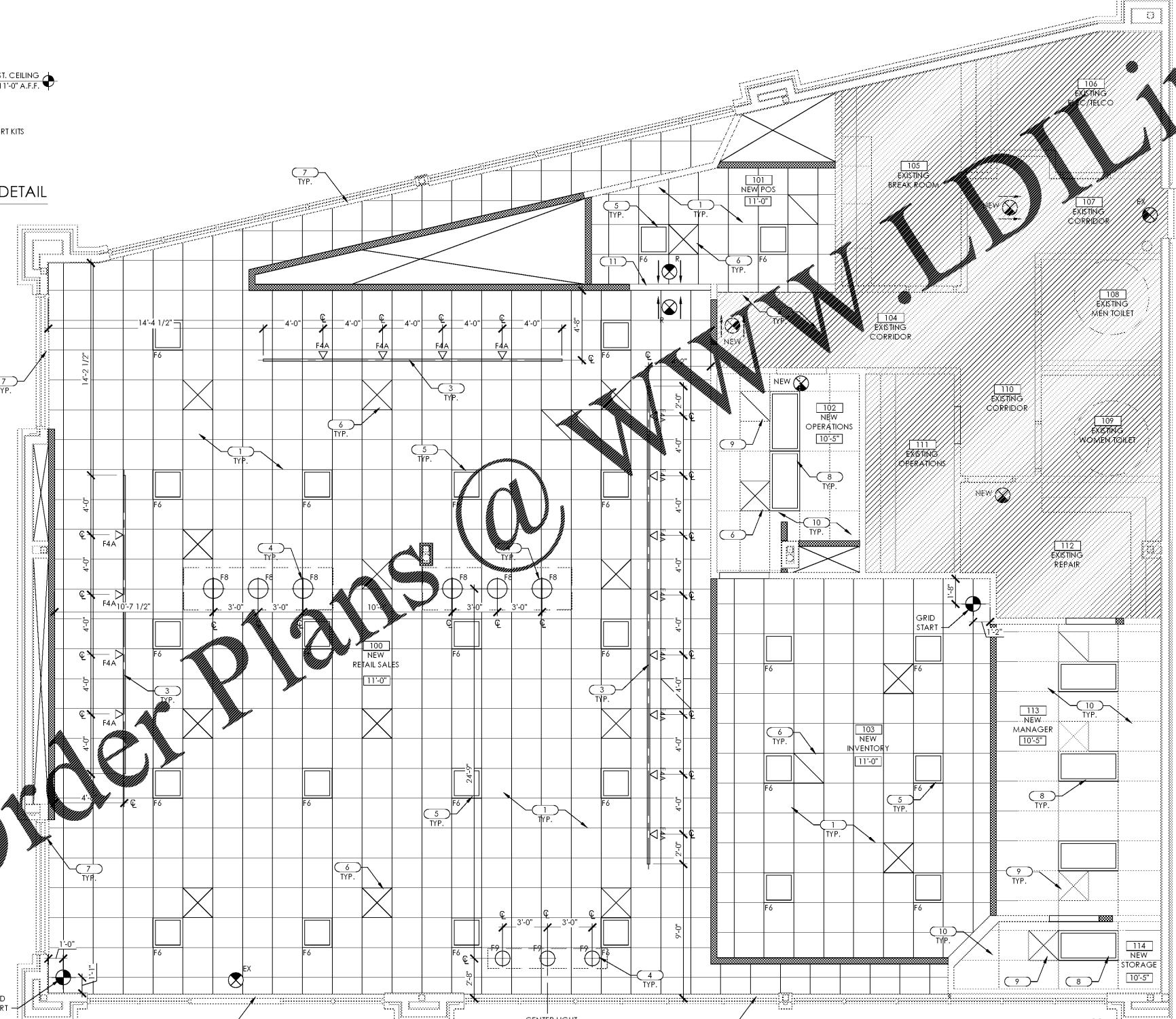
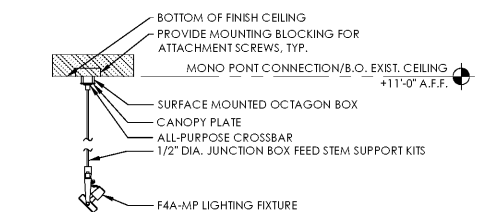
TYP. TRACK LIGHTING HANGING DETAIL
 SCALE: 1/2" = 1'-0"



TYP. PENDANT LIGHT HANGING DETAIL
 SCALE: 1/2" = 1'-0"



TYP. MONO-POINT HANGING DETAIL
 SCALE: 1/2" = 1'-0"



REFLECTED CEILING PLAN
 SCALE: 1/4" = 1'-0"

P:\Verizon Wireless\Hendersonville, NC\1602 Four Seasons Blvd\1602 Four Seasons Blvd_V2W_Reflectd Ceiling Plan_Ceiling Lighting Details.dwg
 Author: Matthew J. Balch
 Date: 03/13/2019 10:27:27 AM