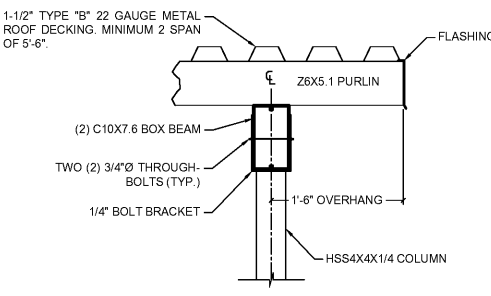
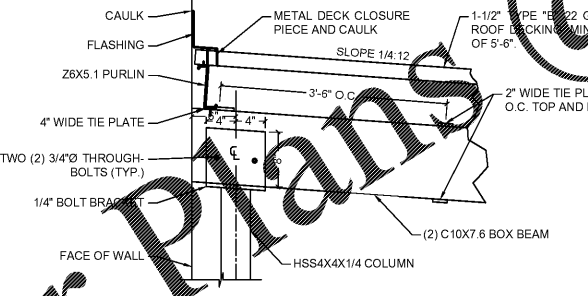


- NOTES:**
1. KNEE BRACE PEDESTALS SHALL BE MOUNTED TO THE TOP OF THE 3/4" ROOF SHEATHING AND DIRECTLY OVER THE SUPPORTING BAR JOIST LOCATIONS.
  2. BAR JOISTS SUPPLIER SHALL SPECIFY AND PROVIDE BRIDGING REQUIREMENTS, INCLUDING BRIDGING FOR A MINIMUM NET UPLIFT OF 110 LBS PER LINEAR FOOT OF BAR JOIST LENGTH.
  3. L3X3X1/4 ANGLE BRACES SHALL BE INSTALLED ON TRUSSES DENOTED WITH A CIRCLE AT ITS BEARING POINT. BRACES MAY BE INSTALLED ON MORE TRUSSES THAN DENOTED AT THE DISCRETION OF THE OWNER AND CONTRACTOR.

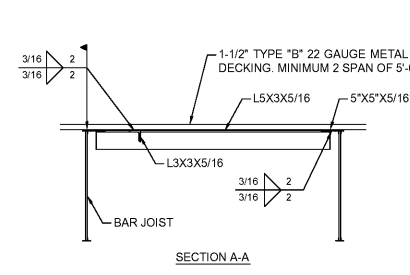
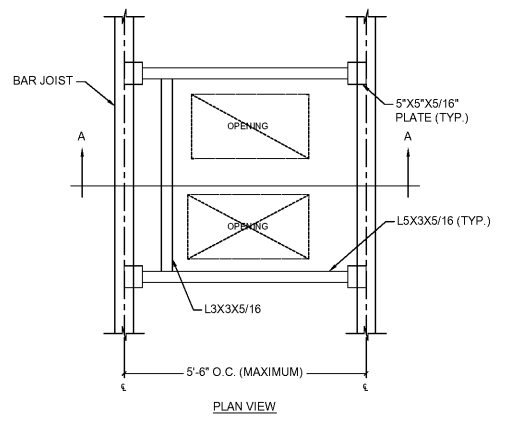
**1 ROOF FRAMING PLAN**  
SCALE: 1/4" = 1'-0"



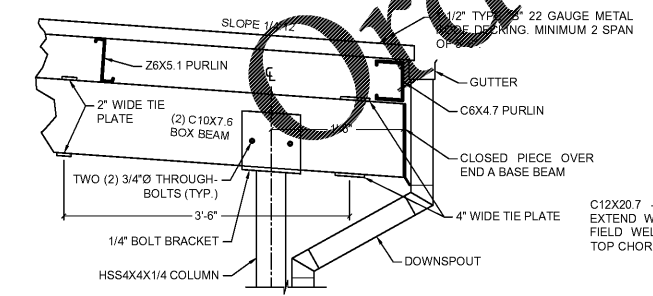
**2 POST TO BOX BEAM CONNECTION**  
SCALE: 1" = 1'-0"



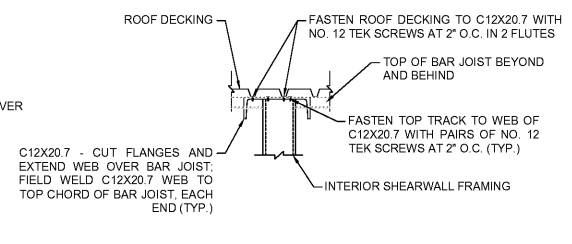
**4 TYP. CONNECTION TO BUILDING**  
SCALE: 1" = 1'-0"



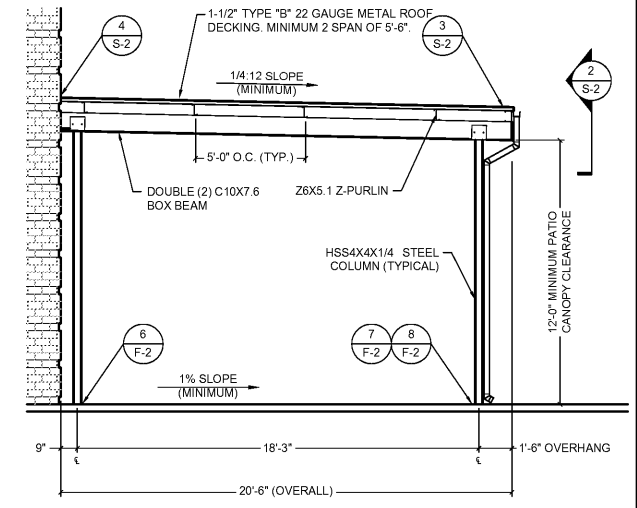
**6 DETAIL AT ROOF OPENING**  
SCALE: 1/2" = 1'-0"



**3 EAVE CONNECTION DETAIL**  
SCALE: 1" = 1'-0"



**5 INTERIOR SHEARWALL CONNECTION**  
SCALE: 1" = 1'-0"



**7 FRONT ELEVATION**  
SCALE: 1/4" = 1'-0"



**Summey Engineering Associates, PLLC**  
Engineering - Land Planning - Consulting  
PO Box 968  
Asheboro, NC 27204  
Phone: 336-528-0902 Fax: 336-528-0922  
E-mail: mack@summey.com  
NC Professional Engineering Firm License No. P-9336

By	
Description	
Date	
No.	

**COOK-OUT RESTAURANTS**  
4145 S. MEMORIAL DRIVE  
PITT COUNTY - WINTERVILLE TOWNSHIP - NORTH CAROLINA

Scale	AS NOTED
Date	FEBRUARY 2019
Drawn By	WBAV/PBC
Checked By	WBA
Job No.	E-54150
Sheet No.	<b>S-2</b>
	2 of 6