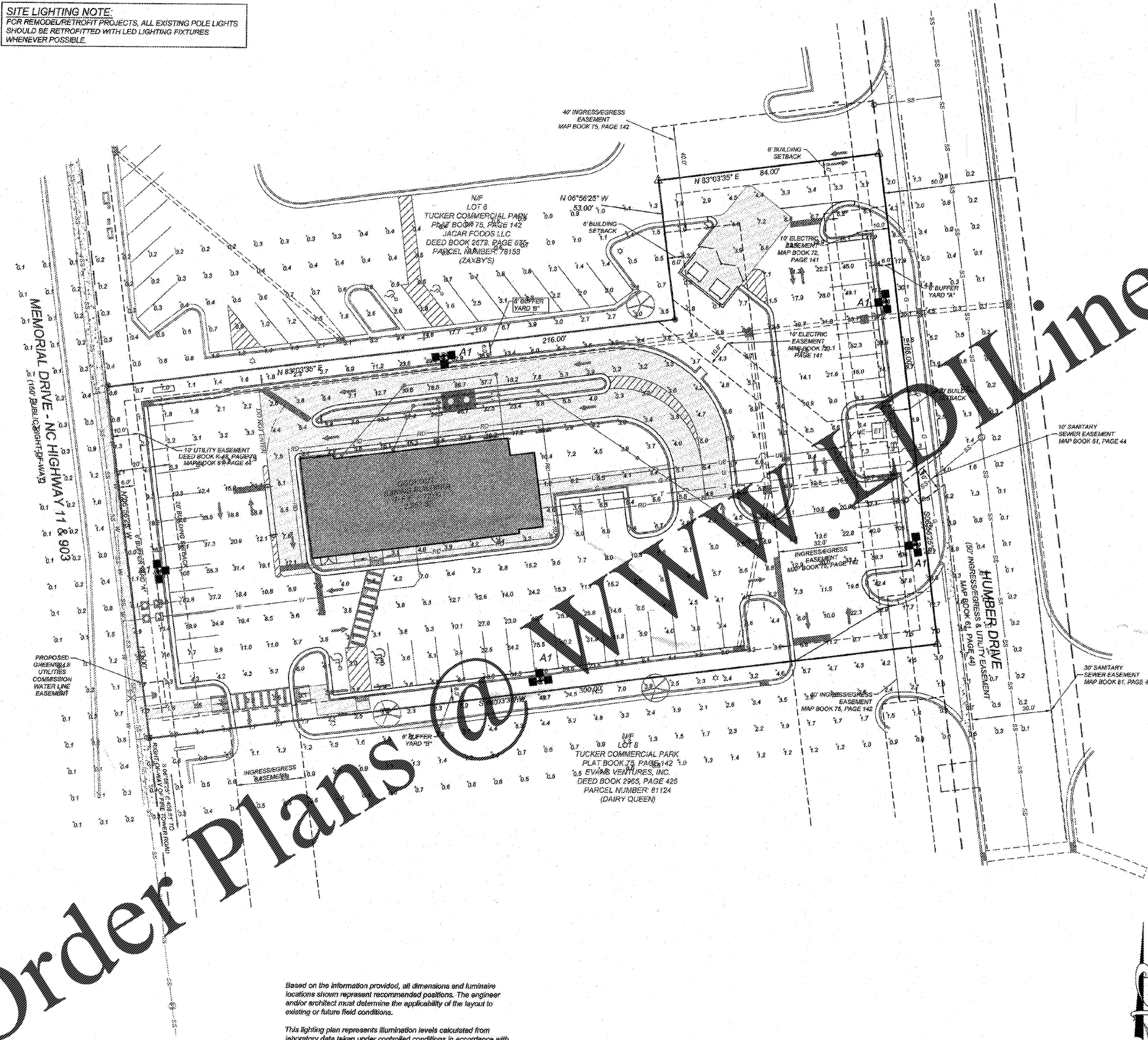
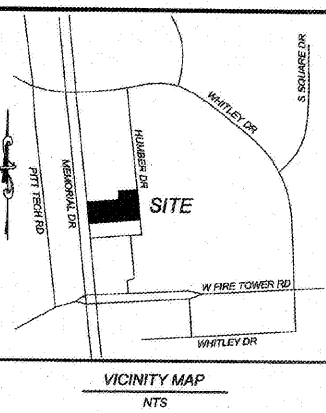
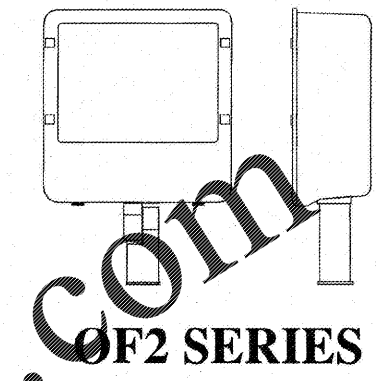


SITE LIGHTING NOTE:
 FOR REMODEL/RETROFIT PROJECTS, ALL EXISTING POLE LIGHTS SHOULD BE RETROFITTED WITH LED LIGHTING FIXTURES WHENEVER POSSIBLE.



Order Plans @ www.dolline.com



| NO. | DATE | DESCRIPTION |
|-----|----------|------------------|
| 1 | 11-05-16 | REVISIONS |
| 2 | 12-14-16 | CITY COMMENTS #2 |
| 3 | 06-07-17 | CITY COMMENTS #3 |
| 4 | 12-19-18 | CITY COMMENTS #4 |
| 5 | 01-07-19 | CITY COMMENTS #5 |
| 6 | 01-28-19 | CITY COMMENTS #6 |

COMMERCIAL SITE DESIGN
 (919) 844-3121 FAX: (919) 848-2741
 WWW.CSDESIGN.COM
 872 CREECHWOOD ROAD
 RALEIGH, NORTH CAROLINA 27603

CLIENT:
 COOK OUT
 15 LAURA LANE, SUITE 300
 THOMASVILLE, NC 27386
 TELEPHONE: (336) 275-7025
 FAX: (336) 474-1849

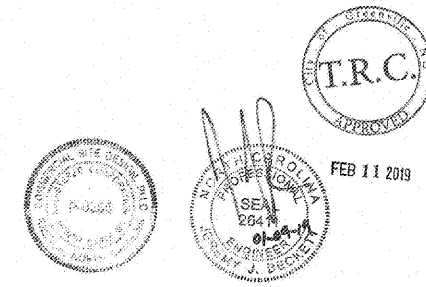
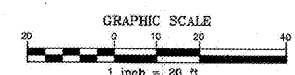
COOKOUT FRESH HAMBURGERS
 4145 S. MEMORIAL DRIVE
 WINTERVILLE, PITT COUNTY, NORTH CAROLINA
LIGHTING PLAN

Based on the information provided, all dimensions and luminaire locations shown represent recommended positions. The engineer and/or architect must determine the applicability of the layout to existing or future field conditions.

This lighting plan represents illumination levels calculated from laboratory data taken under controlled conditions in accordance with The Illuminating Engineering Society (IES) approved methods. Actual performance of any manufacturer's luminaires may vary due to changes in electrical voltage, tolerance in lamps/LED's and other variable field conditions. Calculations do not include obstructions such as buildings, curbs, landscaping, or any other architectural elements unless noted.

| Label | CalcType | Units | Avg | Max | Min | Avg/Min | Max/Min |
|---------------------------|-------------|-------|-------|-----|-----|---------|---------|
| ALL CALC POINTS AT GRADE | Illuminance | Fc | 8.13 | 112 | 0.1 | 61.30 | 1118 |
| PARKING AND DRIVE SUMMARY | Illuminance | Fc | 15.78 | 112 | 1.2 | 13.16 | 93.33 |

| Symbol | Qty | Label | Arrangement | Description | LLF | Lumens/Lamp | Arr. Lum. Lumens | Arr. Watts |
|--------|-----|-------|-------------|--|-------|-------------|------------------|------------|
| ■ | 5 | A1 | GROUP | OFL2-WB-1000-MH-F WITH TRIPLE BRKT ON 24' POLE + 2' BASE | 0.720 | N.A. | 225627 | 3240 |



Total Project Value
 Total Value = 16250

PROJECT NO: OUT-1641
 FILENAME: OUT1641-LI
 DRAWN BY: JDF
 SCALE: 1" = 20'
 DATE: 08-16-2016
 SHEET 1 OF 1
 SCALE 1"=20'

C-9