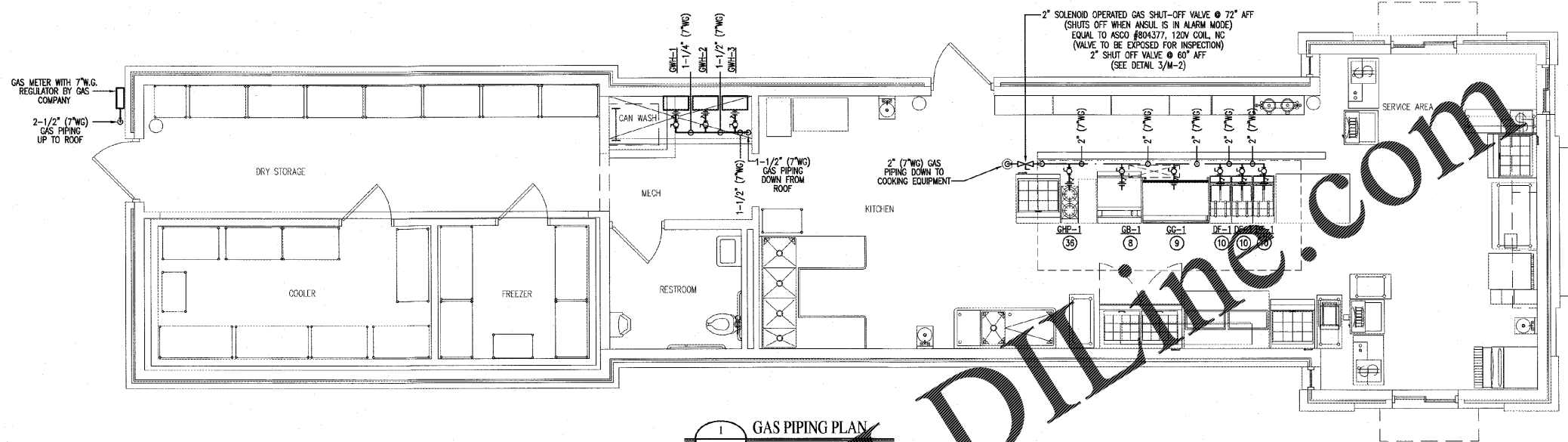
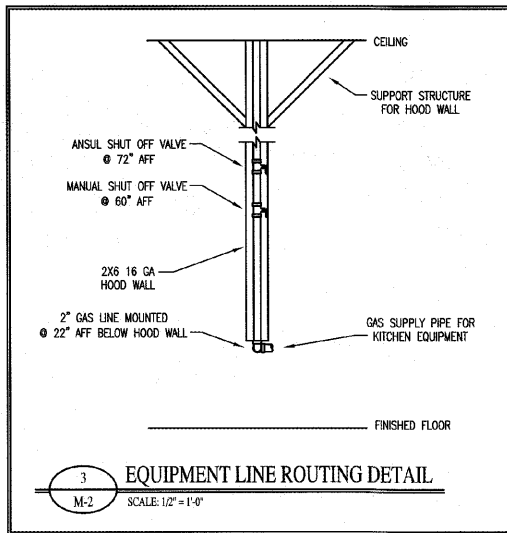


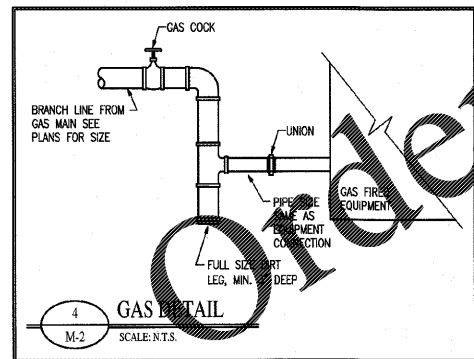
GAS EQUIPMENT SCHEDULE		
MARK	DESCRIPTION	BTU/hr. INPUT
RTU-1	ROOF TOP UNIT	120,000
RTU-2	ROOF TOP UNIT	120,000
MUA-1	GAS FIRED MAKE-UP AIR UNIT	182,600
GWH-1	WATER HEATER	199,000
GWH-2	WATER HEATER	199,000
GWH-3	WATER HEATER	199,000
GG-1	GAS GRIDDLE	100,000
GB-1	GAS-BROILER	72,000
DF-1	DEEP FRYER	120,000
DF-1	DEEP FRYER	120,000
DF-1	DEEP FRYER	120,000
GHP-1	GAS HOT PLATE	52,000
TOTAL		1,603,600
		100' T.D.L.



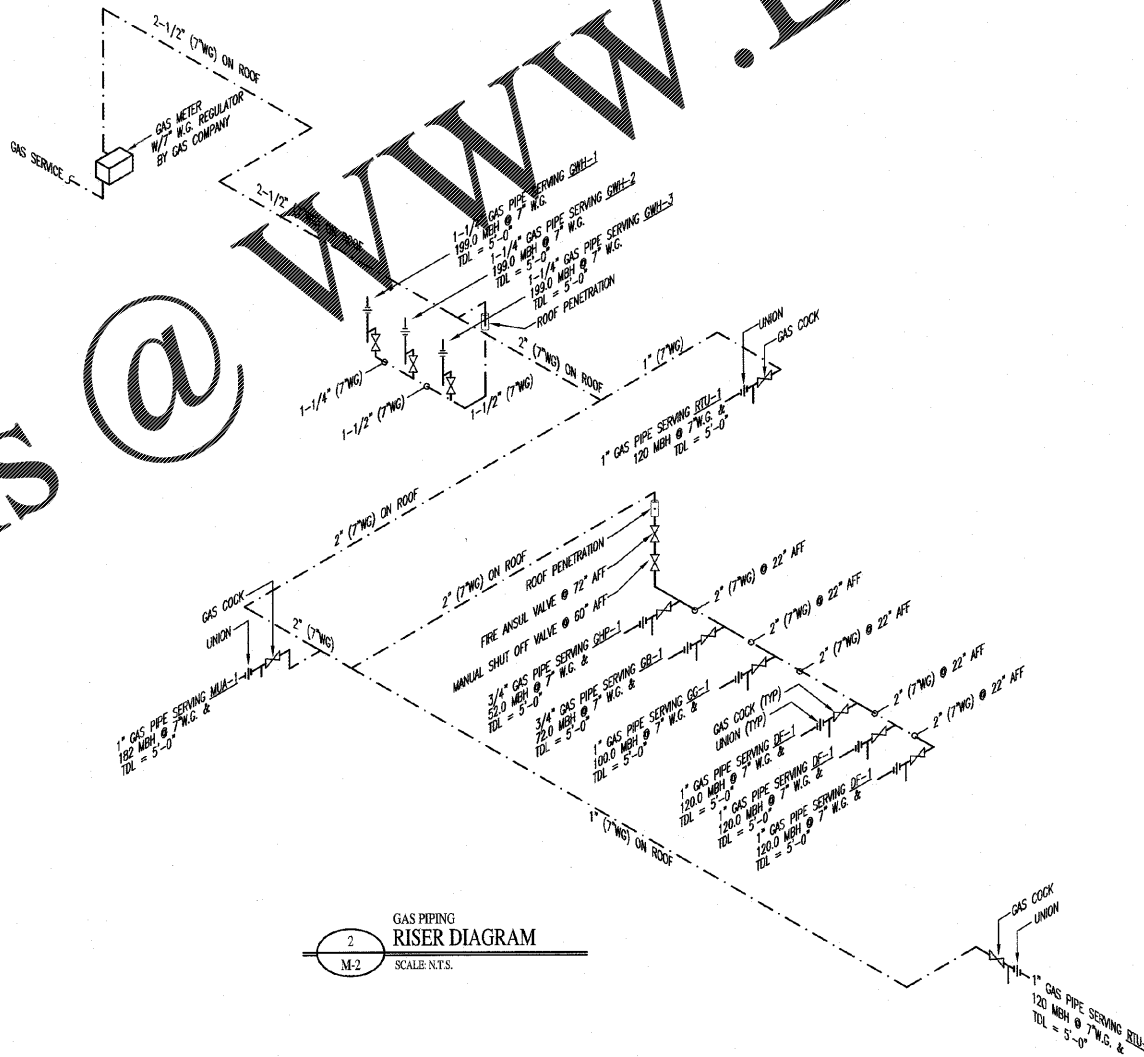
1 GAS PIPING PLAN
SCALE: 1/4"=1'-0"



3 EQUIPMENT LINE ROUTING DETAIL
SCALE: 1/2"=1'-0"



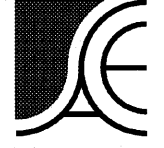
4 GAS DETAIL
SCALE: N.T.S.



2 GAS PIPING RISER DIAGRAM
SCALE: N.T.S.

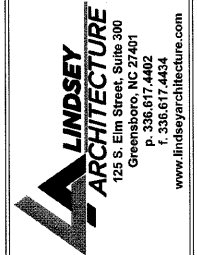
Order Plans @ WWW.LDLINE.COM

Copyright © 2019 Alamance Consulting Engineers, P.A. All Rights Reserved. No part of these plans may be copied, reproduced or used in any way without the express written permission of Alamance Consulting Engineers, P.A.



Alamance Consulting Engineers

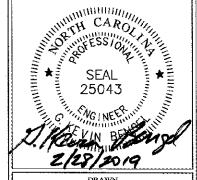
961-F Burlington Ave.
Gibsonville, N.C. 27249
Phone: (336) 449-4558
www.ace-nc.net
N.C. Firm License Number C-2071



LINDSEY ARCHITECTURE
125 S. Elm Street, Suite 300
Greensboro, NC 27401
P. 336.617.4402
www.lindseyarchitecture.com

NEW BUILDING FACILITY:
COOK OUT
4455 Main Street
Shallotte, North Carolina

DRAWING NAME:
GAS PIPING PLAN



DRAWN: TGW
DATE: 2/27/19
SCALE: AS NOTED
JOB NO.: 19021
SHEET:

M-2