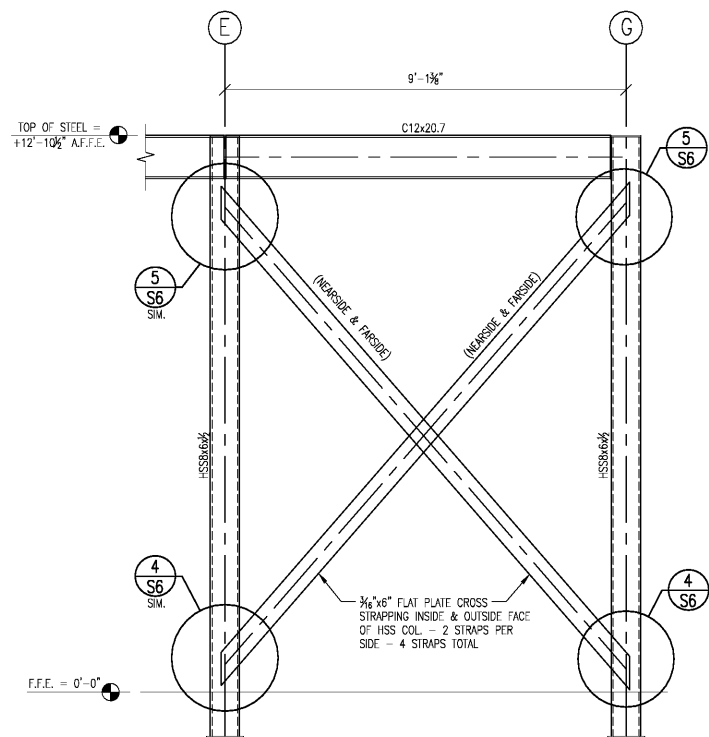


NOTE: TENSION STRAPPING IS REQUIRED ON BOTH FRONT AND BACK SIDES OF HSS COL.

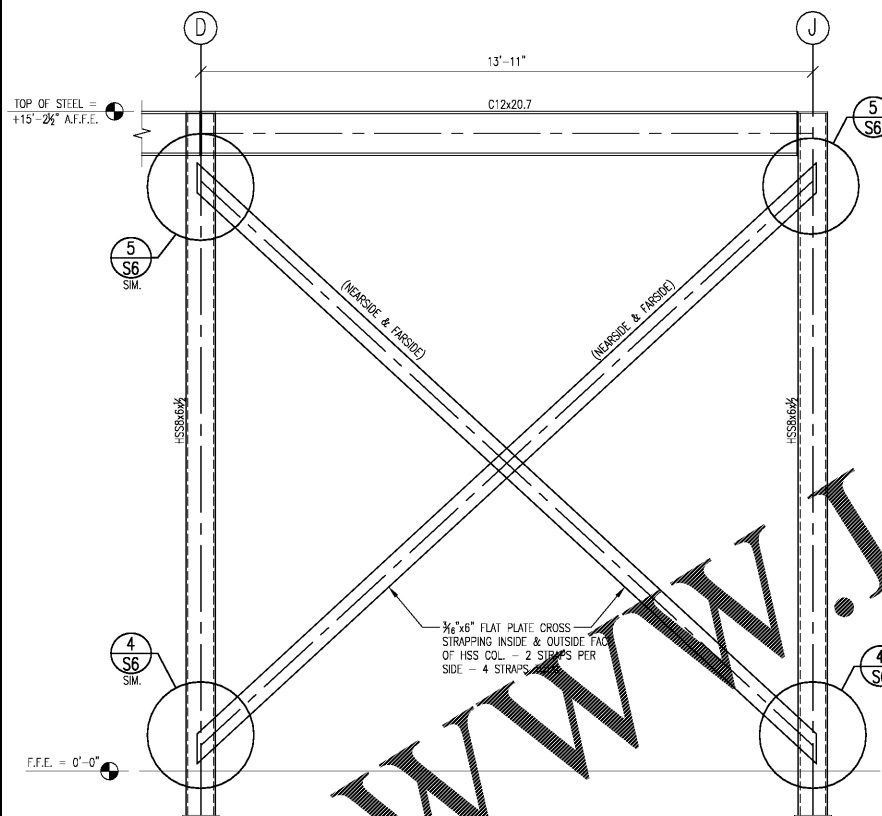


AS VIEWED FROM BLDG. EXTERIOR

GC TO COORDINATE W/ STEEL ERECTOR & LIGHT GAUGE METAL STUD FRAMING SUBCONTRACTOR TO STUD THESE AREAS FIRST BEFORE STEEL ERECTOR INSTALLS FLAT PLATE BRACING.

WELD LOW ENDS OF PLATE STRAPPING & PRE-TENSION TO 100 LBS. PRIOR TO WELDING HIGH END OF STRAPPING TO COLUMN

NOTE: TENSION STRAPPING IS REQUIRED ON BOTH FRONT AND BACK SIDES OF HSS COL.

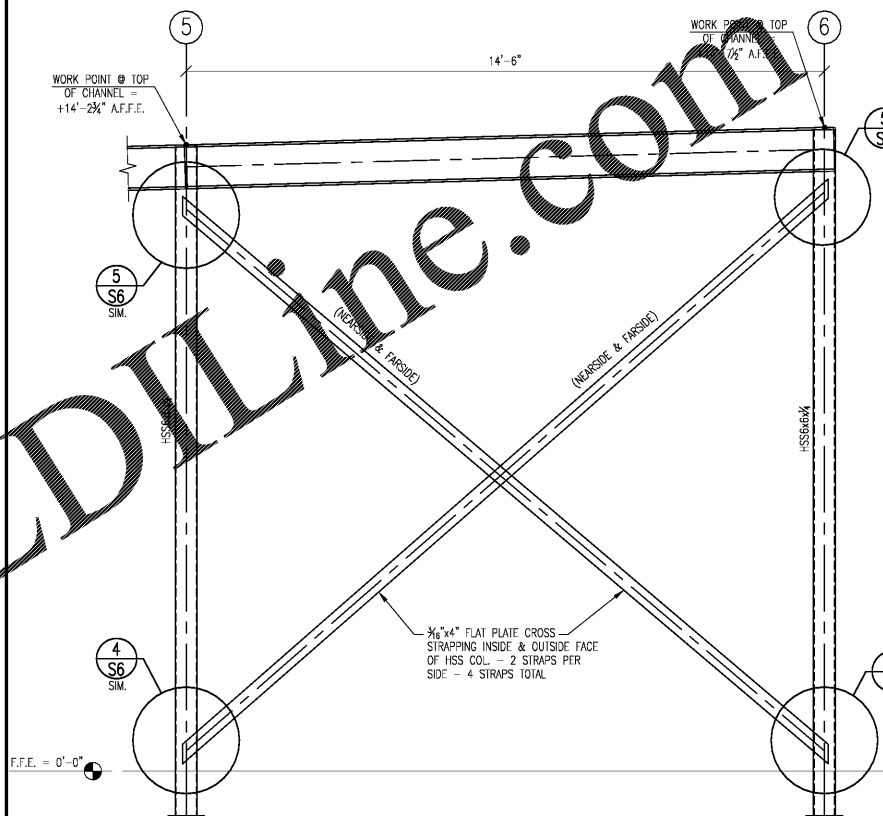


AS VIEWED FROM BLDG. INTERIOR

GC TO COORDINATE W/ STEEL ERECTOR & LIGHT GAUGE METAL STUD FRAMING SUBCONTRACTOR TO STUD THESE AREAS FIRST BEFORE STEEL ERECTOR INSTALLS FLAT PLATE BRACING.

WELD LOW ENDS OF PLATE STRAPPING & PRE-TENSION TO 100 LBS. PRIOR TO WELDING HIGH END OF STRAPPING TO COLUMN

NOTE: TENSION STRAPPING IS REQUIRED ON BOTH FRONT AND BACK SIDES OF HSS COL.



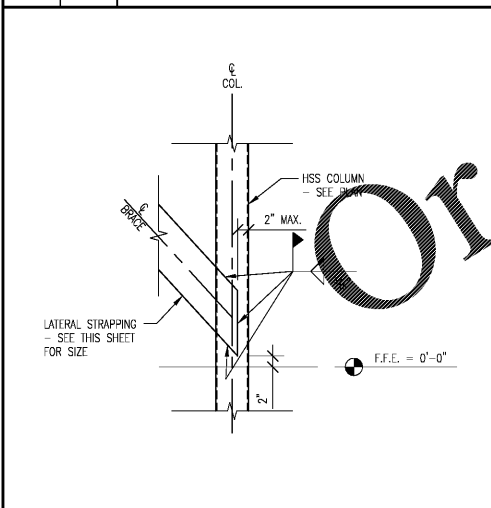
AS VIEWED FROM BLDG. INTERIOR @ GRIDLINE C

AS VIEWED FROM BLDG. EXTERIOR @ GRIDLINE F

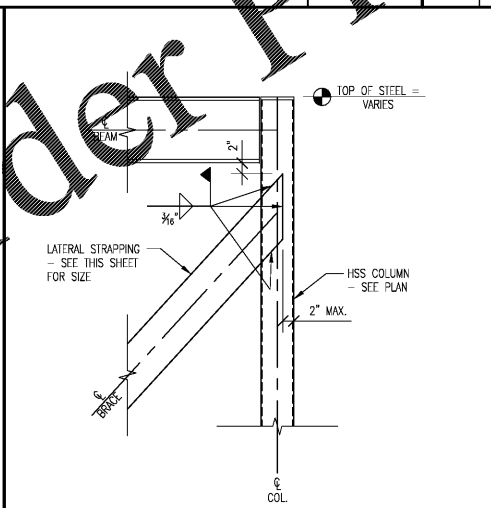
GC TO COORDINATE W/ STEEL ERECTOR & LIGHT GAUGE METAL STUD FRAMING SUBCONTRACTOR TO STUD THESE AREAS FIRST BEFORE STEEL ERECTOR INSTALLS FLAT PLATE BRACING.

WELD LOW ENDS OF PLATE STRAPPING & PRE-TENSION TO 100 LBS. PRIOR TO WELDING HIGH END OF STRAPPING TO COLUMN

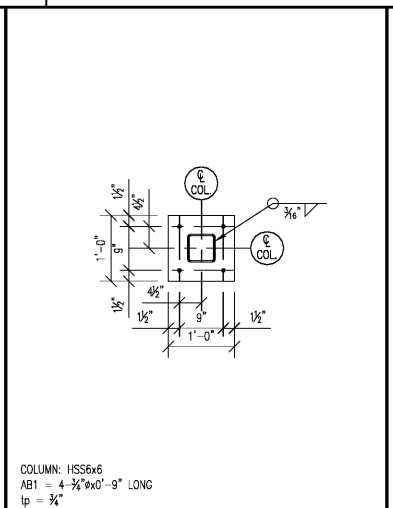
SECTION NO. 1	S6	CROSS STRAPPING DETAIL @ GRIDLINE 1	SCALE 1/2" = 1'-0"	SECTION NO. 2	S6	CROSS STRAPPING DETAIL @ GRIDLINE 7	SCALE 1/2" = 1'-0"	SECTION NO. 3	S6	CROSS STRAPPING DETAIL @ GRIDLINE C & F	SCALE 1/2" = 1'-0"
---------------	----	-------------------------------------	--------------------	---------------	----	-------------------------------------	--------------------	---------------	----	---	--------------------



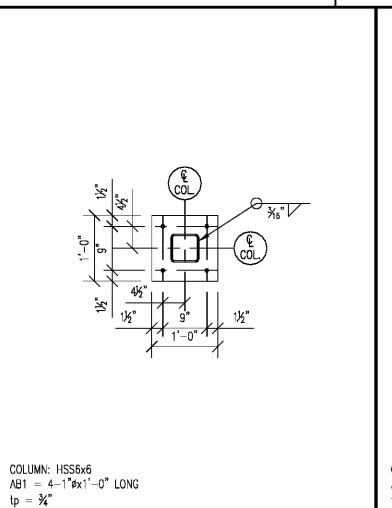
SECTION NO. 4	S6	DETAIL	SCALE 3/4" = 1'-0"
---------------	----	--------	--------------------



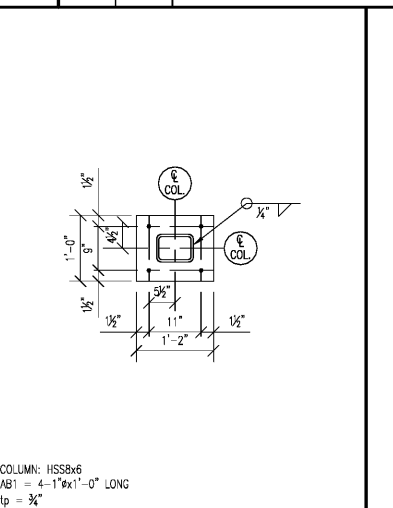
SECTION NO. 5	S6	DETAIL	SCALE 3/4" = 1'-0"
---------------	----	--------	--------------------



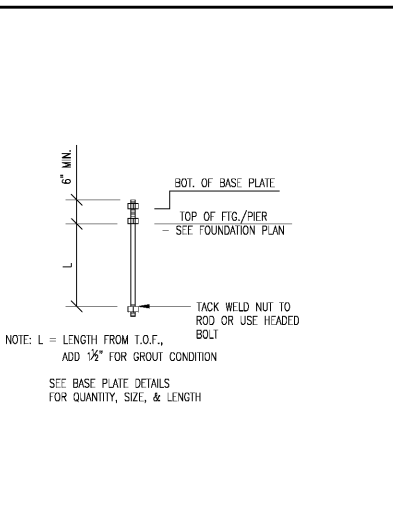
SECTION NO. 6	BP1 - BASE PLATE DETAIL	SCALE NO SCALE
---------------	-------------------------	----------------



SECTION NO. 7	BP2 - BASE PLATE DETAIL	SCALE NO SCALE
---------------	-------------------------	----------------



SECTION NO. 8	BP3 - BASE PLATE DETAIL	SCALE NO SCALE
---------------	-------------------------	----------------



SECTION NO. 9	ANCHOR BOLT DETAIL	SCALE NO SCALE
---------------	--------------------	----------------

MEPC
 MECHANICAL ENGINEERING, P.C.
 UNIVERSITY COMMERCIAL CENTER
 1900 NORTH POUL STREET, SUITE 209
 WINSTON-SALEM, NC 27105
 T: 336-583-8823
 F: 336-583-5912
 email: office@mepe-engineers.com
 www.mepe-engineers.com

MEPC NO. 16-19
 NORTH CAROLINA
 PROFESSIONAL SEAL
 044884
 3/11/19
 FIRM REGISTRATION NO.: C-1323

DATE	DESCRIPTION	REVISION

DETAILS

DATE 03-11-2019
 DRAWN BY JKP
 CHECK BY JUM
 JOB NO. 19-010

S6 of S9

LINDSEY ARCHITECTURE
 123 S. Elm Street, Suite 300
 Greensboro, NC 27401
 P: 336.817.4400
 F: 336.817.4434
 www.lindseyarchitecture.com

COOK-OUT
 4455 MAIN ST., SHALLOTTE NC 28470