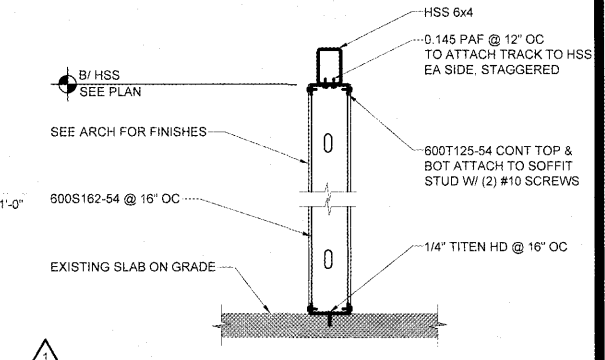
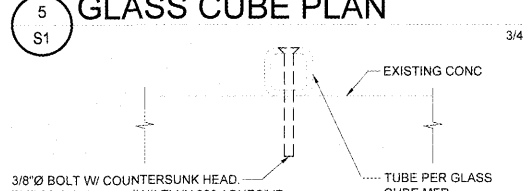
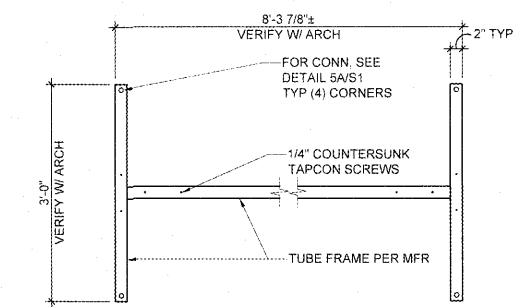
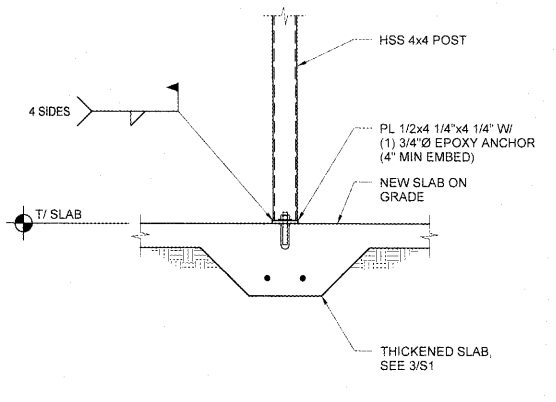
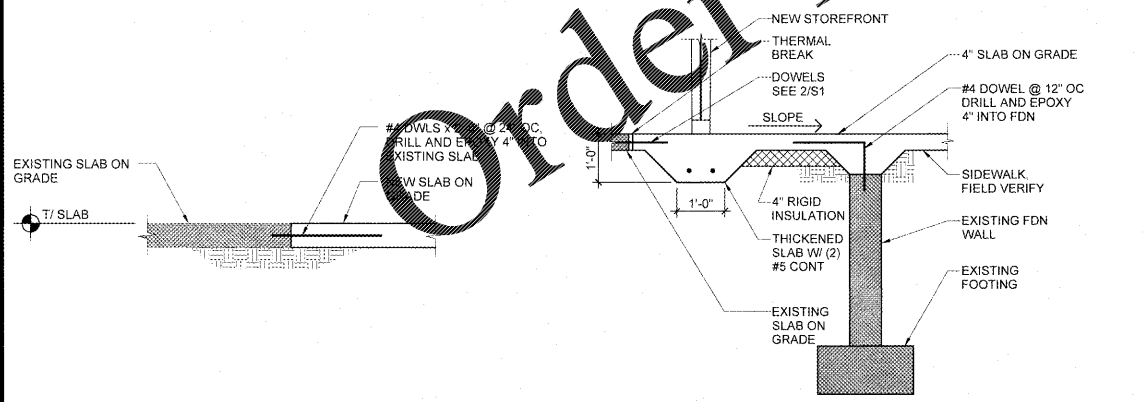


**1 STRUCTURAL PLAN**  
 PLAN NOTES:  
 1. SEE STRUCTURAL NOTES ON SHEET S0.  
 2. GC TO FIELD VERIFY ALL EXISTING CONDITIONS IMPACTED BY THIS WORK PRIOR TO SHOP DRAWINGS, FABRICATION, AND CONSTRUCTION. NOTIFY ENGINEER IMMEDIATELY IF DISCREPANCIES OCCUR.



**PATRICK G. BLEES**  
 architecture • planning • interior design  
 PATRICK G. BLEES ARCHITECT, PLLC  
 800 WASHINGTON AVE. N., SUITE 208  
 MINNEAPOLIS, MN 55401-1330  
 PHONE: (612) 547-1300  
 FAX: (612) 547-1301  
 CONTACT: KRISTIN MOAN  
 kmoan@cmarch.com

**VAA**  
 VAA, LLC  
 2300 Berkshire Lane N. Suite 200  
 Plymouth, MN 55441  
 FL Firm Registration No. 31385  
 763.559.9100  
 www.vaaeng.com  
 Project #

SEAL:  
  
 MARK G. BLEES  
 LICENSED PROFESSIONAL ENGINEER  
 FLORIDA  
 47419

**LUCKY\*BRAND**  
**DANIA**  
**POINTE**  
 1763 POINTE BLVD  
 DANIA BEACH, FL  
 33004  
 SPACE #M115  
 SPECIALTY

SHEET TITLE:  
**STRUCTURAL PLAN AND DETAILS**  
 REVISIONS:  
 NO: DATE BY:  
 02.19.19 PERMIT  
 04.03.19 BD RECHECK  
 PROJECT NO: 190029  
 DRAWN BY: AAD

S1