

H		H										H							
PANEL NAME:	H	VOLT:		480Y/277										BUS SIZE:		REMARKS:			
LOCATION:	STOCKRM	PH:		3										200 AMPS					
MOUNTING:	SURFACE	WIRE:		4										200 AMPS					
RM. NO.	LOAD DESCRIPTION	TYPE	BRKR	CCT	V.A.	V.A.	V.A.	V.A.	V.A.	V.A.	V.A.	V.A.	V.A.	V.A.	CCT	BRKR	TYPE	LOAD DESCRIPTION	RM. NO.
	EXIT/EMERGENCY LIGHTS	L	20/1	1	472										2	30/1	C	WH-1	
	SALES PENDANT LIGHTS	L	20/1	3		1888									4	15	M	RTU-2	LOC
	STOCKHALL LIGHTS	L	20/1	5			472								6	/	M		LOC
	SPARE			7	0										8	3	M		LOC
	SHOW/WINDOW STRIP LIGHTS	L	20/1	9		224									10	45	LM	RTU-1	LOC
				11											12	/	LM		LOC
				13											14	3	LM		LOC
				15											16				
				17											18				
				19											20				
				21											22				
				23											24				
				25											26				
				27											28				
				29											30				
				31											32				
				33											34				
				35											36				
				37											38	50		L	STOCKRM
				39											40	/		VIATransformer	
				41											42	3			

PER PHASE TOTAL VA	23958	18289	17151	
TOTAL CONNECTED VA	59398			V.A.
TOTAL CONNECTED AMPS	71			AMPS
3 X HIGHEST PHASE	71874			V.A.
HIGHEST AMPS	86			AMPS

LOAD TYPE	BRKRTYPE	WIRE	AMPS	VA
L = LIGHTING			8512	X 1.25 = 10640
C = CONTINUOUS			6500	X 1.25 = 8125
LM = LARGEST MOTOR			29097	X 1.25 = 36371
M = REMAINING MOTORS			3069	X 1 = 3069
N = NON-CONTINUOUS			3880	X 1 = 3880
R = RECEPTACLE			8340	** = 8340
KK/2K3 = KITCHEN EQUIP			0	** = 0
TOTAL CALCULATED LOAD (VA)				= 70425
TOTAL CALCULATED AMPS				= 85

L		L										L							
PANEL NAME:	L	VOLT:		208Y/120										BUS SIZE:		REMARKS:			
LOCATION:	STOCKRM	PH:		3										100 AMPS					
MOUNTING:	SURFACE	WIRE:		4										100 AMPS					
RM. NO.	LOAD DESCRIPTION	TYPE	BRKR	CCT	V.A.	V.A.	V.A.	V.A.	V.A.	V.A.	V.A.	V.A.	V.A.	V.A.	CCT	BRKR	TYPE	LOAD DESCRIPTION	RM. NO.
	TTB RECEPCTS	R	20/1	1	360										2	20/1	L	RESTROOM GFCI RECEPTACLE	
	SPARE	R	20/1	3		0									4	20/1	R	SALES RECEPCTS	
	SHOW/WINDOW RECEPT	R	20/1	5											6	20/1	L	STOREFRONT TRACK LIGHTS	
	SHOW/WINDOW RECEPT	R	20/1	7	1200										8	20/1	L	ENTRWAY DOWNLIGHT	
	STOCK RECEPCTS	R	20/1	9		360									10	20/1	L	STOREFRONT DOWNLIGHTS	
	CASHWRAP RECEPT	R	20/1	11											12	20/1	L	TRACK LIGHTS - SALES	
	POS RECEPT	R	20/1	13	360										14	20/1	L	TRACK LIGHTS - SALES	
	BACKWRAP RECEPT	R	20/1	15		360									16	20/1	L	TRACK LIGHTS - SALES	
	ECON STATION RECEPT	R	20/1	17											18	20/1	L	TRACK LIGHTS - SALES	
	POS RECEPT	R	20/1	19	360										20	20/1	L	TRACK LIGHTS - SALES	
	ECON STATION RECEPT	R	20/1	21		180									22	20/1	L	FIXING RIG LIGHTS/WALL SCONCES	
	CLOCK RECEPTACLE	R	20/1	23											24	20/1	R	BACKWRAP RECEPTACLE	
	REFRIGERATOR	N	20/1	25	1200										26	20/1	C	STOREFRONT SIGN	LOC
	MICROWAVE	N	20/1	27		1200									28	20/1	R	LIGHTING CONTROL PNL PWR	
	EVC	N	20/1	29											30	20/1	R	GENERAL RECEPTACLE	
	MANAGER DESK RECEPT	R	20/1	31	180										32	20/1	N	TIMECLOCK POWER	
	MANAGER DESK RECEPT	R	20/1	33		180									34	20/1	N	BUZZER SYSTEM	
	GFCI OUTLET STOCKRM	R	20/1	35											36	20/1	R	RTU RECEPTACLES	
	UPS	R	20/1	37	180										38			SPACE	
	UPS	R	20/1	39		180									40			SPACE	
	DATA RECEPT	R	20/1	41											42			SPACE	

PER PHASE TOTAL VA	6764	4555	5957	
TOTAL CONNECTED VA	18176			V.A.
TOTAL CONNECTED AMPS	50			AMPS
HIGHEST PHASE	20292			V.A.
HIGHEST AMPS	56			AMPS

LOAD TYPE	BRKRTYPE	WIRE	AMPS	VA
L = LIGHTING			5456	X 1.25 = 6820
C = CONTINUOUS			500	X 1.25 = 625
LM = LARGEST MOTOR			0	X 1.25 = 0
M = REMAINING MOTORS			0	X 1 = 0
N = NON-CONTINUOUS			3880	X 1 = 3880
R = RECEPTACLE			8340	** = 8340
KK/2K3 = KITCHEN EQUIP			0	** = 0
TOTAL CALCULATED LOAD (VA)				= 19665
TOTAL CALCULATED AMPS				= 55

PROVIDE LOCK ON CLIPS FOR HVAC CIRCUITS AND SIGNAGE CIRCUITS IN PANEL

PROVIDE LOCK ON CLIPS FOR HVAC CIRCUITS AND SIGNAGE CIRCUITS IN PANEL  
LOC = LOCK ON BREAKER

TOTAL VA LOAD	71874 va
POWER FACTOR	0.9
FLOOR AREA	5020 sq ft
watts per sq ft	12.88578 w

SEAL:



04/03/2019  
DATE ISSUED  
65487

REG. NO.

LUCKY BRAND  
DANIA  
POINTE

1763 POINTE BLVD  
DANIA BEACH, FL  
33004

SPACE #M115

SPECIALTY

SHEET TITLE:

ELECTRICAL SCHEDULES  
& RISER DIAGRAM

REVISIONS:  
ORIGINAL ISSUE: 01.17.19  
NO. 1 DATE: 04/03/19 BY: BLDG

PROJECT NO: 18028.008

DRAWN BY: ALH

E4

COPYRIGHT PATRICK G. BLEES AIA, PLLC 2018

### GENERAL NOTES

PROVIDE A 2X3 INCH LABEL WITH BLUE LETTERING ON CONTRASTING BACKGROUND PERMANENTLY AFFIXED TO THE SERVICE DISCONNECT/EQUIPMENT PRIOR TO ENERGIZING HE SERVICE EQUIPMENT.

CONDUCTORS SHALL BE THHN/THWN COPPER CONDUCTORS. INSULATION TYPE UNLESS SPECIFICALLY NOTED OTHERWISE.

ARC FLASH HAZARD WARNING LABELS: USE WARNING LABELS TO IDENTIFY ARCH FLASH HAZARDS FOR ELECTRICAL EQUIPMENT. LABEL TO BE ORANGE HEADER THAT READS WARNING FOLLOWED BY THE WORD MESSAGE ARC FLASH AND SHOCK HAZARD: APPROPRIATE PERSONAL PROTECTION EQUIPMENT: FAILURE TO COMPLY MAY RESULT IN INJURY OR DEATH. REFER TO NFPA 70E FOR MINIMUM PPE REQUIREMENTS OR APPROVED EQUIVALENT.

EC TO VISIT THE EXISTING SPACE AND SURVEY EXISTING CONDITIONS PRIOR TO BID. VERIFY EXISTING CONDUIT/CONDUCTORS/METERING AND ROUTING OF THE CONDUIT TO LANDLORD'S SPACE. REPORT ANY DISCREPANCIES TO ARCHITECT.

NECESSARY FUSES ARE THE RESPONSIBILITY OF THE ELECTRICAL CONTRACTOR TO FURNISH AND INS. SEE MOTOR EQUIPMENT SCHEDULE AND POWER RISER FOR FUSE SIZES.

THIS RISER DIAGRAM REPRESENTS (AS ACCURATELY AS POSSIBLE) THE ELECTRICAL DISTRIBUTION SYSTEM. FIELD VERIFY SIZES OF EQUIPMENT, CONDUCTORS, FUSES, ETC. SHOWN ON THE DRAWINGS SHALL BE CONSIDERED A MINIMUM. ANY EXISTING EQUIPMENT CONDUCTORS, FUSES, ETC. WHICH DO NOT MEET MINIMUM SHALL BE REPLACED TO MEET MINIMUM.

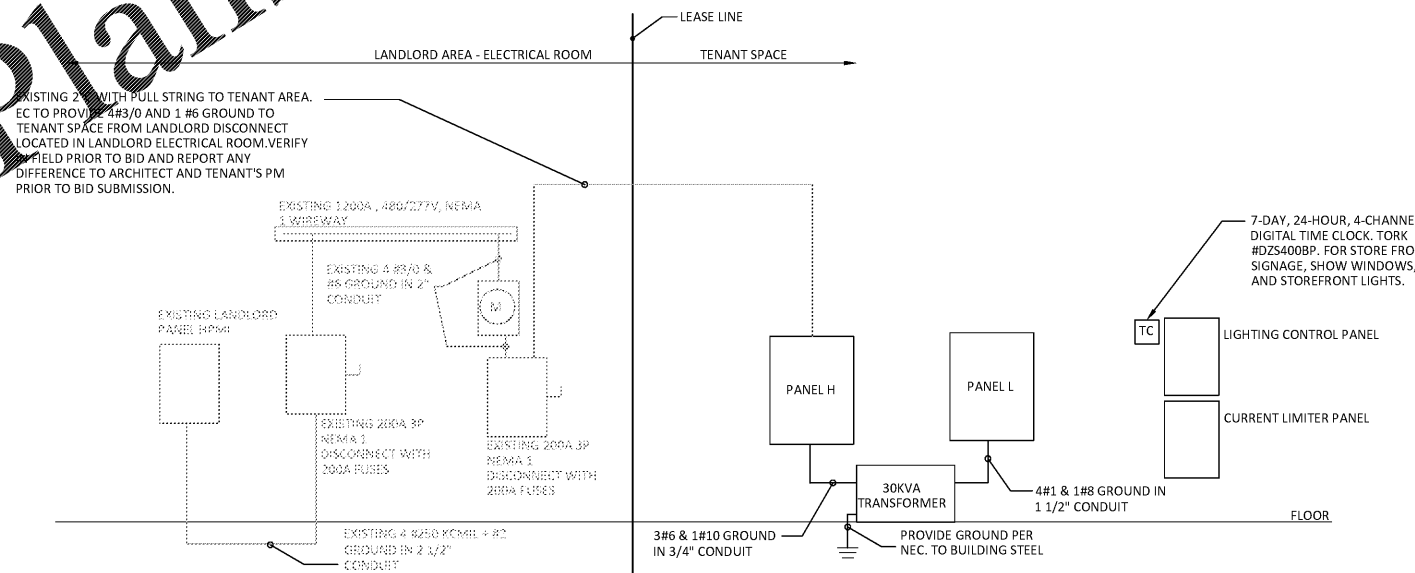
PROVIDE AND INSTALL PERMANENT NAME PLATES ON THE FACE OF THE TIME CLOCK, AND ELECTRICAL PANELS.

PROVIDE NEW BOLT ON BREAKERS AS REQUIRED.

PANELS SUPPLIED BY ELECTRICAL CONTRACTOR.

PANEL LOADS TO BE BALANCED WITHIN +/- 10% DURING NORMAL OPERATING CONDITIONS.

TRANSFORMER SHALL BE PROVIDED WITH ENGRAVED WARNING NAMEPLATE PERMANENTLY AFFIXED TO THE TOP OF THE TRANSFORMER WITH THE INSCRIPTION AS FOLLOWS: "WARNING - HOT SURFACE - DO NOT STORE ANYTHING ON TOP OF OR DIRECTLY ABOVE THIS TRANSFORMER."



ELECTRICAL RISER DIAGRAM