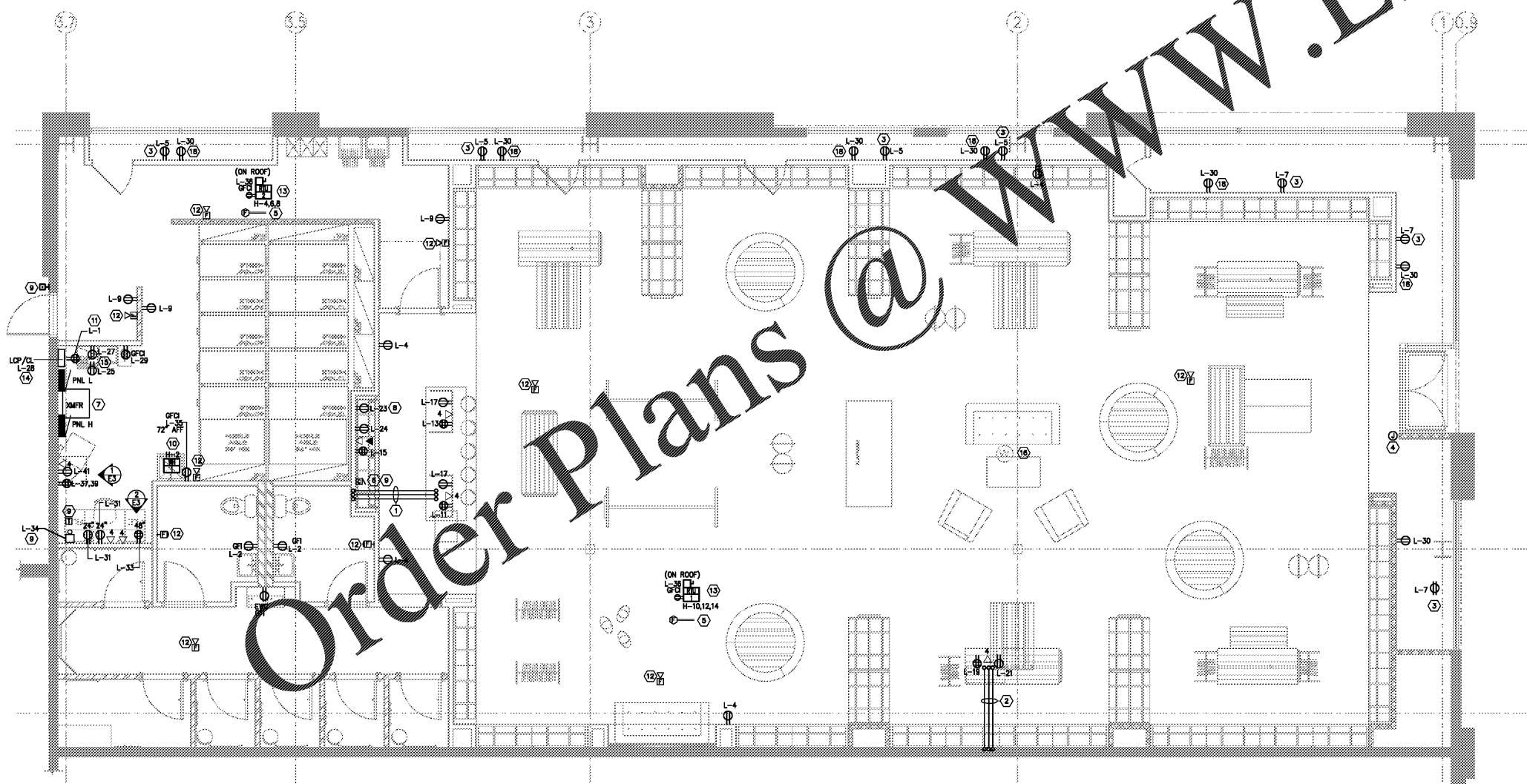


### GENERAL NOTES

- A. GC TO COORDINATE CONDUIT STUB-UPS FOR CASH-WRAP WITH VENDOR SHOP DRAWINGS TO ENSURE AN ACCURATE AND CLEAN INSTALLATION IS ACCOMPLISHED. STUB-UPS ARE TO BE CLEAN HOLES USING A DRILL BIT ONE SIZE LARGER THAN THE CONDUIT. USING A SAWS-ALL IS NOT AN APPROVED METHOD. NO OVERTURS.
- B. GROUND SEPARATELY DERIVED SERVICE, INCLUDING BUILDING STEEL IN GROUND, IF POSSIBLE.
- C. CIRCUIT BREAKERS SHALL BE BOLT ON TYPE.
- D. FOR SLAB PENETRATIONS: THE METHOD, DEPTHS AND LOCATIONS SHALL BE PRE-APPROVED BY THE MALL FIELD REPRESENTATIVE PRIOR TO START OF CONSTRUCTION.
- E. IT IS THE RESPONSIBILITY OF THE TENANT'S CONTRACTOR TO ENSURE THAT UNDER FLOOR UTILITIES ARE NOT HARMED DURING CUTTING/DRILLING OPERATION, AND ARE LIABLE IF ANY DAMAGE OCCURS DUE TO NEGLIGENCE.
- F. ALL OUTLET TRIM PLATES ARE TO BE PAINTED TO MATCH THE WALL COLOR.
- G. BASE BUILDING FIRE ALARM SYSTEM INCLUDES VOICE EVACUATION FUNCTIONS, SO ALL NOTIFICATION DEVICES SHALL BE REVISED TO SPEAKER/STROBES AND/OR SPEAKER ONLY DEVICES.

### POWER PLAN KEYNOTES

- 1 PROVIDE (3) 1" CONDUIT TO CASH WRAP. ASSIGN (1) UPS RECEPTACLE, (1) GENERAL RECEPTACLE, (1) PHONES/DATA FROM ABOVE CEILING, UNDER SLAB, TO STUB-UPS IN CASH-WRAP BASE. VERIFY METHOD OF SLAB PENETRATION (USUALLY CORING OR SAW CUTTING). COORDINATE WITH MALL AUTHORITIES PRIOR TO COMMENCEMENT OF THIS WORK. PATCH AND REPAIR SLAB AS REQUIRED. COMPLY WITH MALL REGULATIONS.
- 2 PROVIDE (3) 1" CONDUITS TO CASH WRAP. ASSIGN (1) UPS RECEPTACLE, (1) GENERAL RECEPTACLE, (1) PHONES/DATA FROM ABOVE CEILING, UNDER SLAB, TO ALUMINUM 3 GANG FLOOR BOX IN CASH WRAP BASE. PROVIDE LEGRAND #880C53-1W WITH ALUMINUM TILE FLANGE 3-GANG COVER PLATE. VERIFY METHOD OF SLAB PENETRATION (USUALLY CORING OR SAW CUTTING). COORDINATE WITH MALL AUTHORITIES PRIOR TO COMMENCEMENT OF THIS WORK. PATCH AND REPAIR SLAB AS REQUIRED. COMPLY WITH MALL REGULATIONS.
- 3 SHOW WINDOW RECEPTACLE MOUNTED AT 11'-6". COORDINATE WITH LIGHTING PLAN ON SHEET E200. RECEPTACLES TO BE CONTROLLED VIA TIME CLOCK. SEE SHEETS FOR MORE INFORMATION.
- 4 PROVIDE JUNCTION BOX WITH CONDUIT AND BUSHING WIRE AND 0'-0" FOR TRAFFIC SENSOR AT STORE FRONT BACK TO DATA CABINET. SEE DETAIL 1 ON SHEET E300 FOR MORE INFORMATION.
- 5 DUCT SMOKE DETECTOR IN UNIT VENT FINAL LOCATION WITH MECHANICAL CONTRACTOR PRIOR TO ROUGH IN. DUCT SMOKE DETECTORS SHALL BE SUPPLIED AND RETURN DUCTS AS REQUIRED BY CODE.
- 6 LOCATE CHIME OVER BACK WRAP. CHIME MOUNTED TO ALIGN WITH TOP OF WALLS.
- 7 ELECTRICAL SERVICE. SEE RISE-DIAGRAM ON SHEET E4 FOR ADDITIONAL INFORMATION.
- 8 PROVIDE GROUND OUTLET FOR NEON SIGN AND LIGHT BOX. SIGN TO BE CONTROLLED VIA LIGHTING CONTROL PANEL.
- 9 PROVIDE CASHING DH924 DELIVERY BUZZER SYSTEM. PROVIDE LOW VOLTAGE TRANSFORMER AND PUSH BUTTON AS REQUIRED. PROVIDE ALL JUNCTION BOXES, CONDUIT AND WIRE FOR A COMPLETE INSTALLATION. BUZZERS SHALL BE LOCATED AS SHOWN ON THE PLAN.
- 10 PROVIDE CONNECTION TO 277V, SINGLE PHASE, 6 KW WATER HEATER. PROVIDE SNAP SWITCH DISCONNECT AND UTILIZE #10 CONDUCTORS. WATER HEATER PROVIDED BY MECHANICAL CONTRACTOR. ELECTRICAL CONTRACTOR TO MAKE FINAL CONNECTION. FIELD VERIFY FINAL LOCATION.
- 11 TELEPHONE BOARD LOCATION WITH QUAD RECEPTACLE. VERIFY MOUNTING LOCATION AND HEIGHT PRIOR TO ROUGH IN. VERIFY INCOMING CONDUIT FROM LANDLORD INTO TENANT SPACE.
- 12 FIRE ALARM DEVICE. PROVIDE NEW HORN/STROBE AND STROBE AS SHOWN ON PLAN. COORDINATE WITH LANDLORD TO TIE INTO EXISTING FIRE ALARM SYSTEM. FIRE ALARM CONTRACTOR SHALL VERIFY LOCAL CODE AND LANDLORD REQUIREMENTS PRIOR TO BID. PROVIDE REDUCTIONS AND/OR ADDITIONS TO THE FIRE ALARM DESIGN AS REQUIRED BY CODE AND LANDLORD. CHANGES IN SCOPE FROM THAT INDICATED IN PLAN SHALL BE IN STRICT ACCORDANCE WITH LOCAL CODES AND LANDLORDS REQUIREMENTS FIRE ALARM CONTRACTOR SHALL PROVIDE A SERVICE INTERRUPTER DEVICE TO INTERFACE WITH FIRE ALARM SYSTEM IN ORDER TO SHUT DOWN TENANT AUDIO SYSTEM IN EVENT OF FIRE ALARM ACTIVATION.
- 13 ROOF TOP UNIT. PROVIDE DISCONNECT SWITCH, ROOF TOP RECEPTACLE AND ASSOCIATED COMPONENTS AS NECESSARY FOR A COMPLETE INSTALLATION. VERIFY FINAL LOCATION WITH MECHANICAL CONTRACTOR PRIOR TO ROUGH IN.
- 14 LIGHTING CONTROL PANEL MOUNTED ABOVE CURRENT LIMITER PANEL. LIGHTING CONTROL PANEL POWERED FROM PANEL L.
- 15 STACKED REFRIGERATOR AND MICROWAVE IN THIS LOCATION. PROVIDE GFCI OUTLETS FOR EACH PIECE OF EQUIPMENT. SEE ARCHITECTURAL SHEET ELEVATIONS FOR MORE INFORMATION.
- 16 WIRELESS DATA ROUTER. PROVIDE POWER AND CONDUIT AS NECESSARY FOR UNIT.
- 17 MAKE CONNECTION TO UNIT DISCONNECT SWITCH FURNISHED WITH AIR CURTAIN. AIR CURTAIN PROVIDED BY MECHANICAL. WIRE DOOR SWITCH, CONCEAL WIRING TO THE GREATEST DEGREE POSSIBLE.
- 18 MOUNT RECEPTACLE AT 48" AFF. CENTER RECEPTACLE ON WINDOW. RECEPTACLE OUTLET AND COVER TO MATCH WALLS.



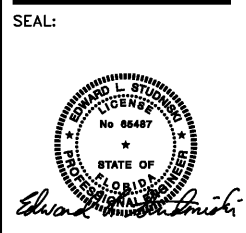
1 POWER PLAN  
E1 1/4"=1'-0"

**PATRICK G. BLEES**  
architecture · planning · interior design

PATRICK G. BLEES ARCHITECT, PLLC  
800 WASHINGTON AVE. N., SUITE 208  
MINNEAPOLIS, MN 55401-1330  
PHONE: (612) 547-1300  
FAX: (612) 547-1301

CONTACT: KRISTIN MOAN  
kmoan@cmarch.com

**Gausman & Moore**  
Mechanical and Electrical Engineers  
1700 Rosedale Towers  
Saint Paul, Minnesota 55113  
(651) 639-9606 FAX 639-9618  
Project No. 08596



04/03/2019  
DATE ISSUED  
65487  
REG. NO.

**LUCKY BRAND**

DANIA POINTE

1763 POINTE BLVD  
DANIA BEACH, FL  
33004

SPACE #M115

SPECIALTY

SHEET TITLE:  
POWER PLAN

REVISIONS:  
ORIGINAL ISSUE: 01.17.19  
NO. 1 DATE: 04/03/19 BY: BLDG

PROJECT NO: 18028.008  
DRAWN BY: ALH

**E1**

COPYRIGHT PATRICK G. BLEES AIA, PLLC 2018