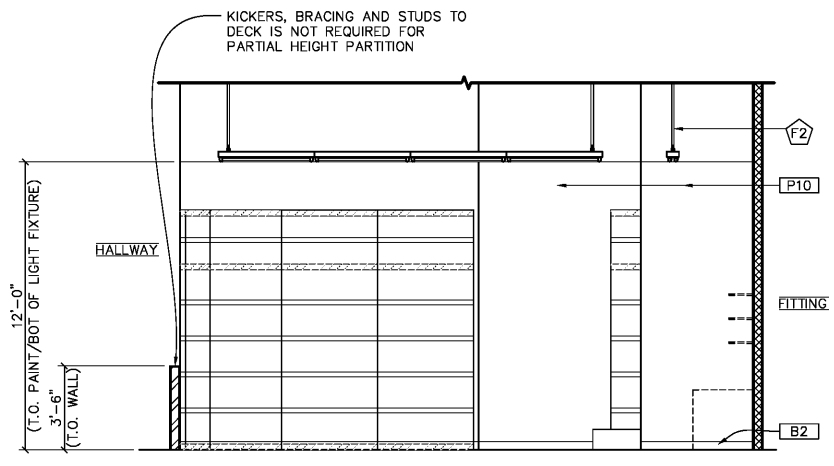
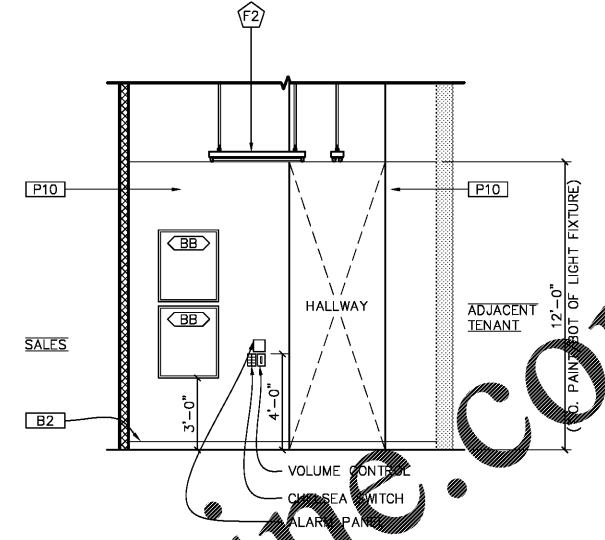


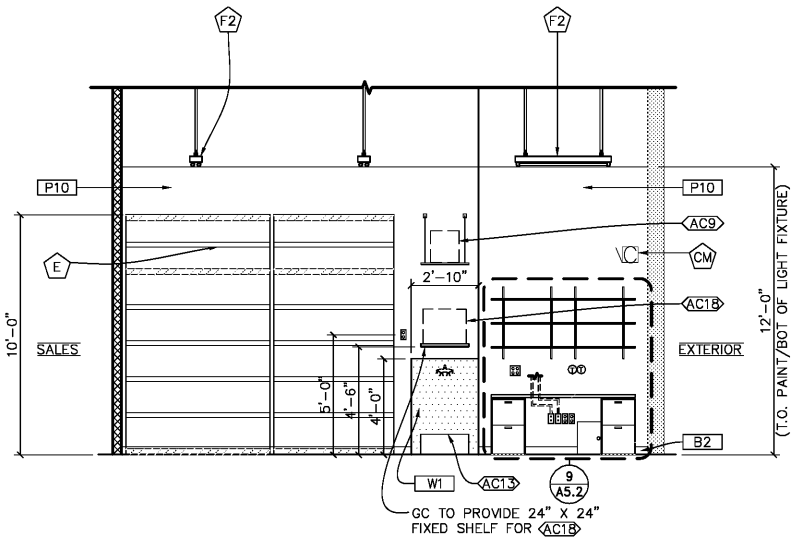
1 STOCKROOM ELEVATION
 A5.2 1/4" = 1'-0"



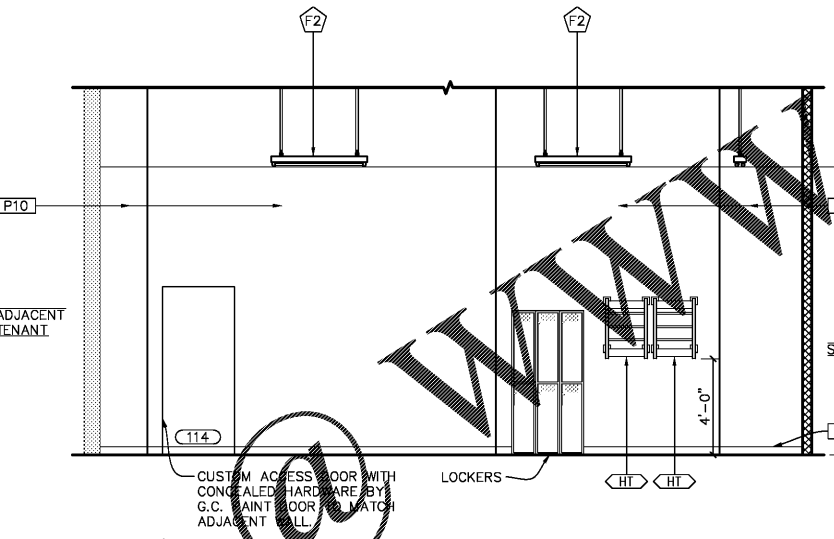
4 STOCKROOM ELEVATION
 A5.2 1/4" = 1'-0"



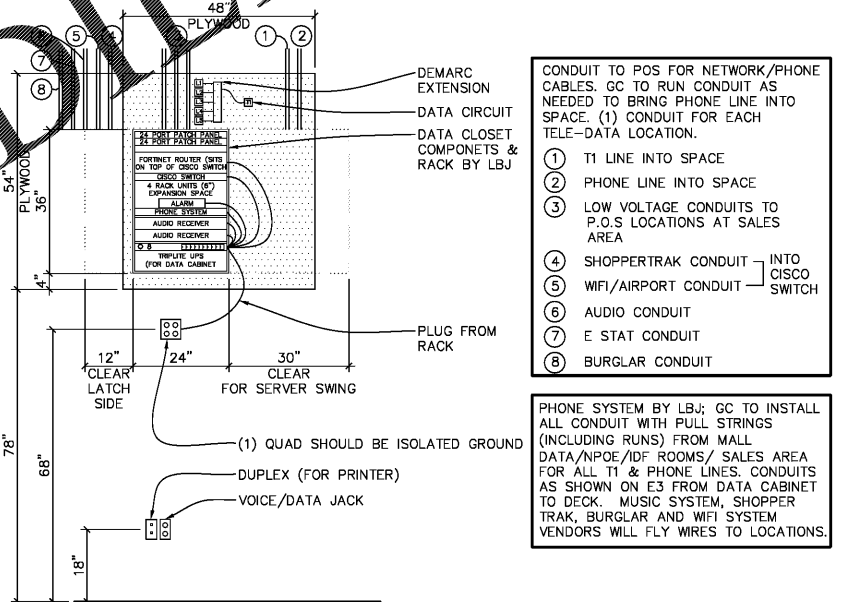
7 HALLWAY ELEVATION
 A5.2 1/4" = 1'-0"



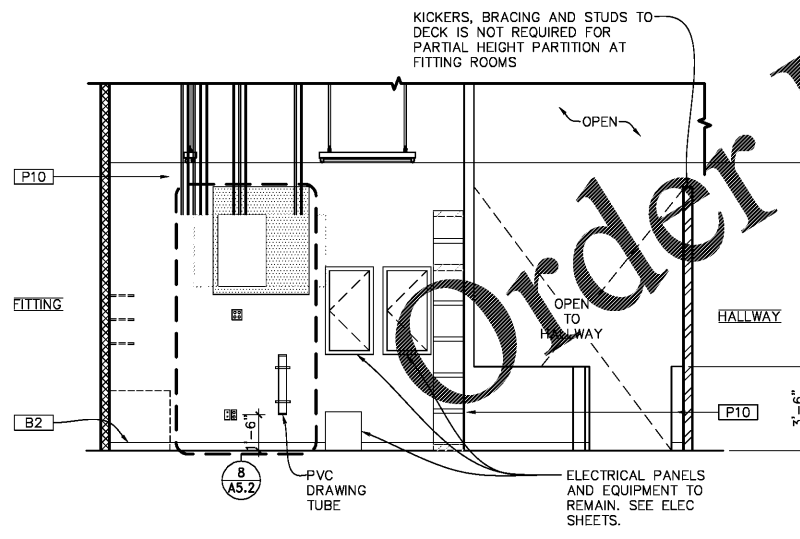
2 STOCKROOM ELEVATION
 A5.2 1/4" = 1'-0"



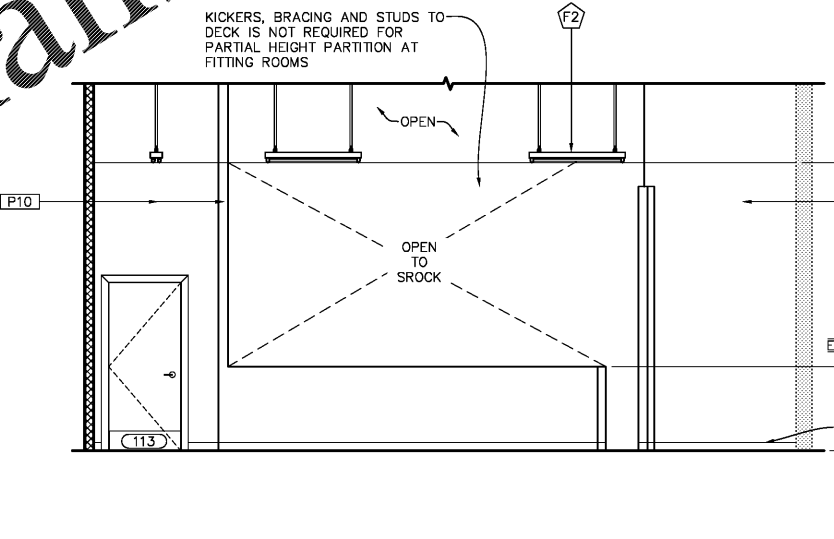
5 HALLWAY ELEVATION
 A5.2 1/4" = 1'-0"



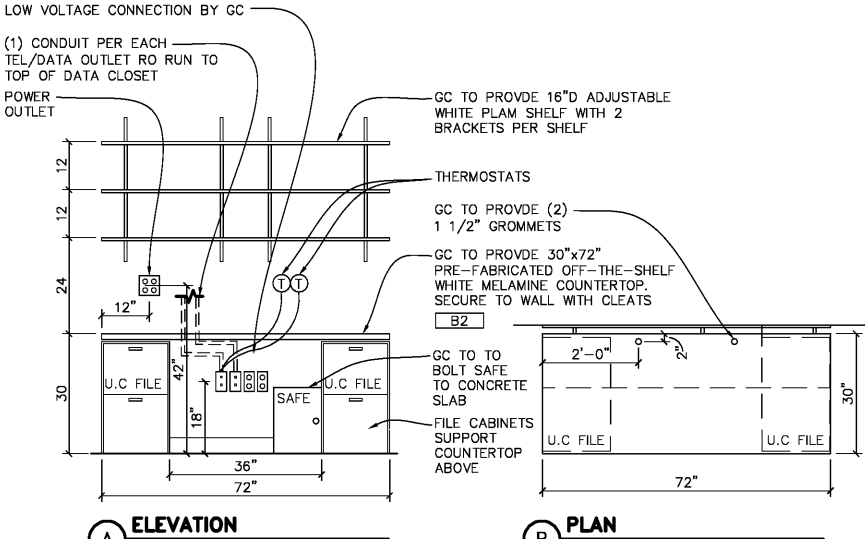
8 DATA CLOSET DETAIL
 A5.2 SCALE: 1/2" = 1'-0"



3 STOCKROOM ELEVATION
 A5.2 1/4" = 1'-0"



6 HALLWAY ELEVATION
 A5.2 1/4" = 1'-0"



9 MANAGERS DESK DETAILS
 A5.2 SCALE: 1/2" = 1'-0"

SEAL:

PATRICK G. BLEES, ARCHITECT

DATE ISSUED: 04/03/19
 REG. NO. AR93439

LUCKY*BRAND
 DANIA POINTE

1763 POINTE BLVD
 DANIA BEACH, FL 33004
 SPACE #M115

SPECIALTY

SHEET TITLE:
 STOCKROOM
 INTERIOR ELEVATION &
 DETAILS

REVISIONS:
 ORIGINAL ISSUE: 01.17.19
 NO: 1 DATE: 04/03/19 BY: BLDG

PROJECT NO: 18028.008
 DRAWN BY: LNC

A5.2