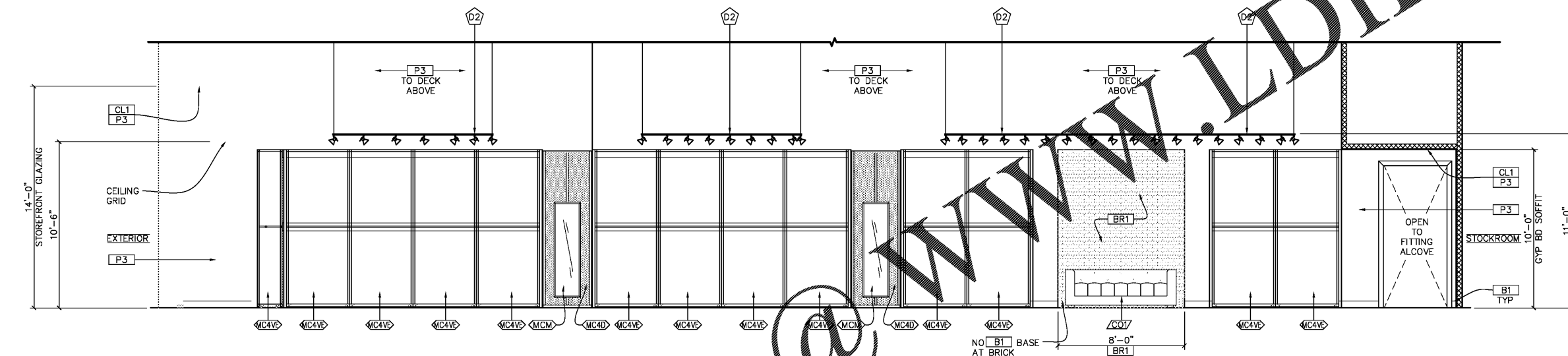
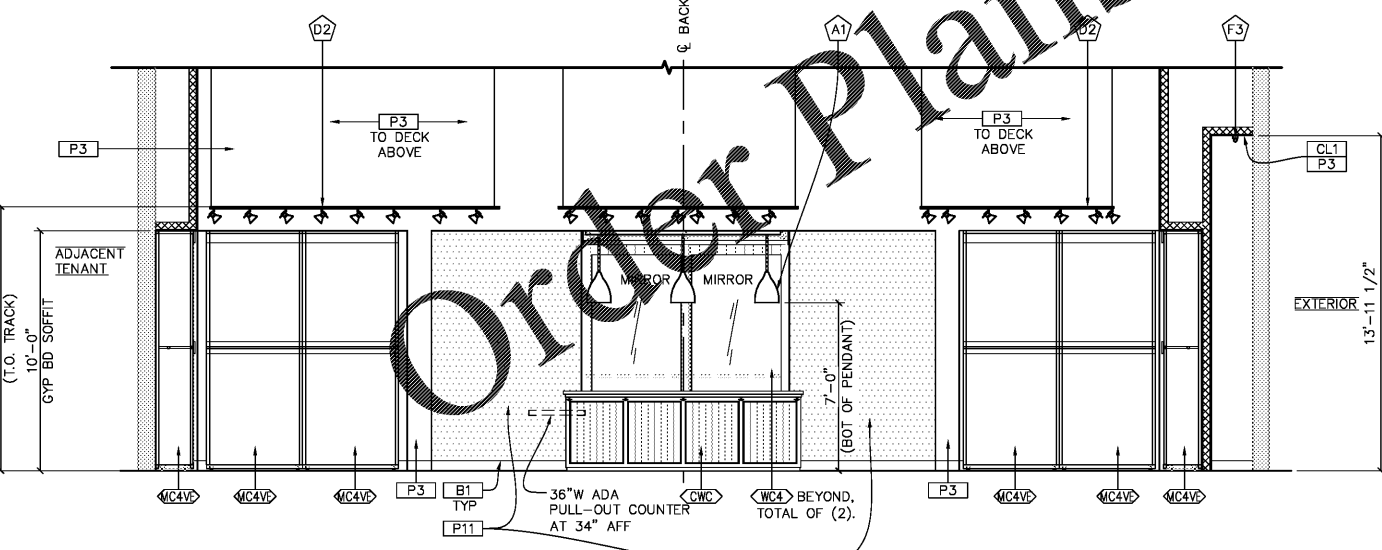


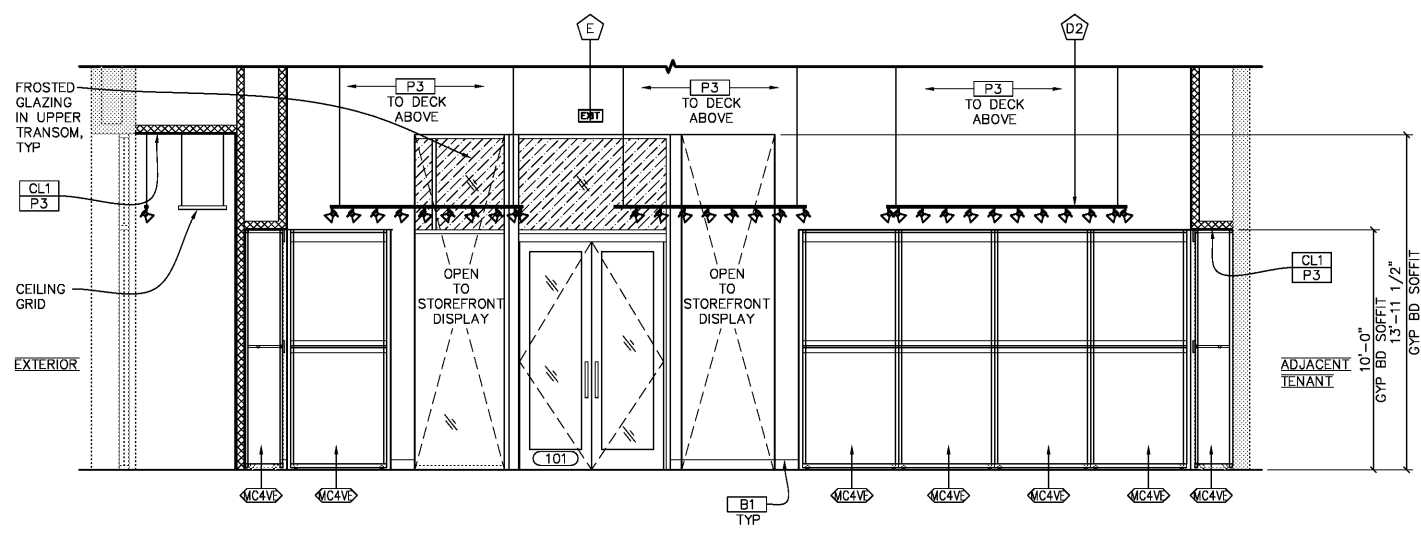
**1 SALES ELEVATION**  
 A5 1/4" = 1'-0"



**2 SALES ELEVATION**  
 A5 1/4" = 1'-0"



**3 SALES ELEVATION**  
 A5 1/4" = 1'-0"



**4 SALES ELEVATION**  
 A5 1/4" = 1'-0"

SEAL:

PATRICK G. BLEES, ARCHITECT

DATE ISSUED: 04/03/19  
 REG. NO. AR93439

**LUCKY\*BRAND**  
 DANIA  
 POINTE

1763 POINTE BLVD  
 DANIA BEACH, FL  
 33004

SPACE #M115  
 SPECIALTY

SHEET TITLE:  
 INTERIOR ELEVATION  
 SALES AREA

REVISIONS:  
 ORIGINAL ISSUE: 01.17.19  
 NO: 1 DATE: 04/03/19 BY: BLDG

PROJECT NO: 18028.008  
 DRAWN BY: MGM/LNC

**A5**