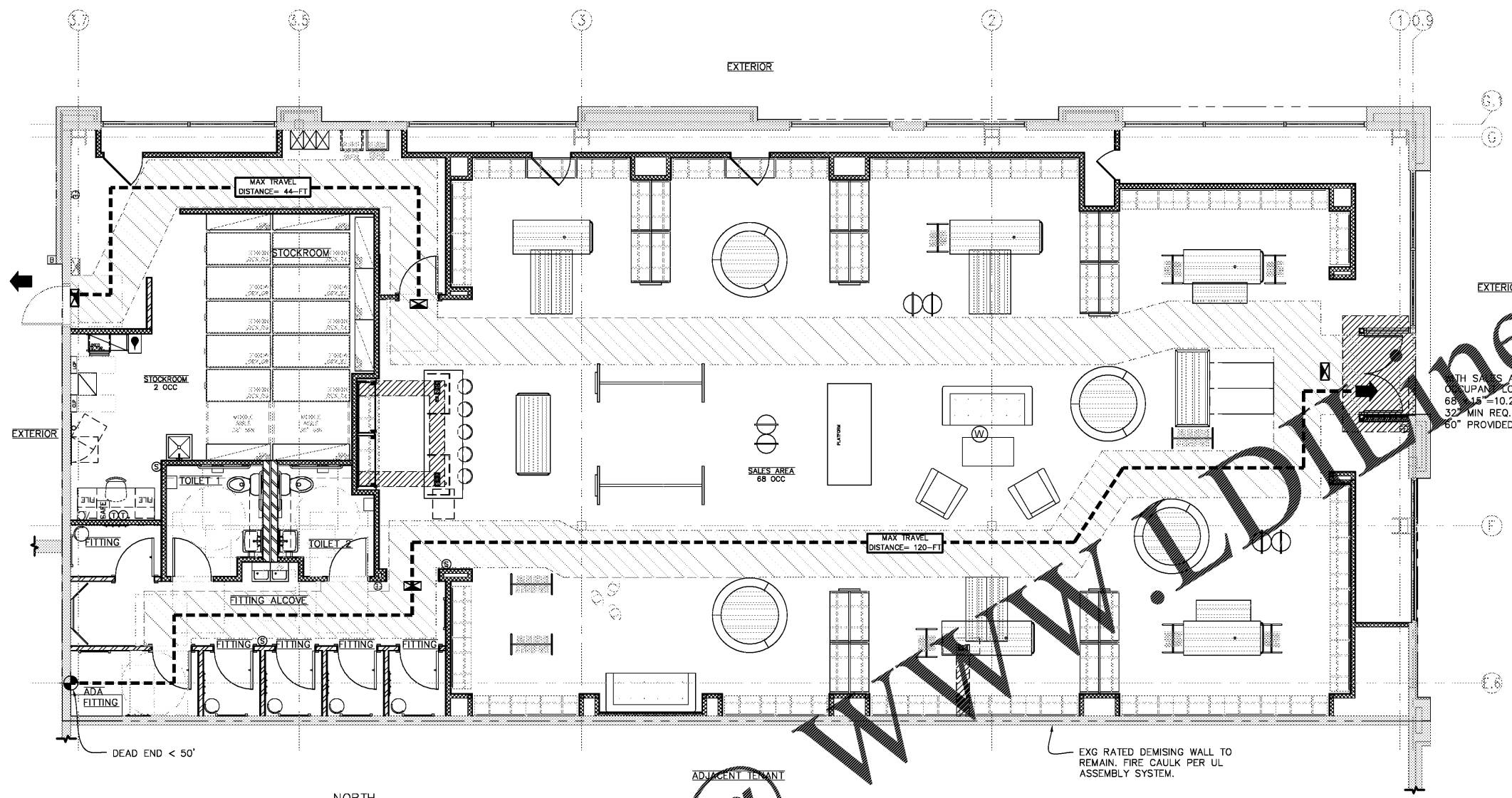


WITH STOCKROOM  
 OCCUPANT LOAD OF 2:  
 2x15' = .3" --->  
 32" MIN REQ.  
 36" PROVIDED

WITH SALES AREA  
 OCCUPANT LOAD OF 68:  
 68x15' = 10.2" --->  
 32" MIN REQ.  
 60" PROVIDED



1 LIFE SAFETY PLAN  
 G4 3/16" = 1'-0"



Order Plans @ www.eddiene.com

**GENERAL NOTES**

- PLANS SHALL COMPLY WITH ALL REQUIREMENTS OF THE FLORIDA FIRE PREVENTION CODE, 5TH EDITION, THE BROWARD COUNTY AMENDMENTS TO THE FLORIDA FIRE PREVENTION CODE 5TH EDITION, N.F.P.A. 101 (LIFE SAFETY CODE), 2012 EDITION AND N.F.P.A. 1 (UNIFORM FIRE CODE), 2012 EDITION.
- ALL INTERIOR FINISHES SHALL COMPLY WITH THE APPLICABLE CHAPTER(S) AND SECTION(S) OF N.F.P.A. 101 (LSC).
- SEE G1 FOR PROJECT SCOPE OF WORK.
- ALL INTERIOR FINISHES SHALL COMPLY WITH THE APPLICABLE CHAPTER AND SECTIONS OF NFPA 101 (LCS). SEE 2017 FLORIDA BUILDING CODE SEC 803.1.1 AND TABLE 803.11.
- INTERIOR FINISHES TO HAVE A MINIMUM FLAME SPREAD OF CLASS B, MAXIMUM SMOKE DENSITY OF 450 AND FLAME SPREAD INDEX OF 26-75 PER ASTM E84 OR UL723, UON
- ALL CEILING MATERIALS TO A MINIMUM FLAME SPREAD OF CLASS A, MAXIMUM SMOKE DENSITY OF 450 AND MAX FLAME SPREAD INDEX OF 25 PER ASTM E84 OR UL723.
- GC TO PROVIDE DOC TO DEMONSTRATE FIRE DEPARTMENT ACCESS ROUTES AND PROVIDE A FIRE SAFETY AND PREVENTION PROGRAM IN ACCORDANCE WITH NFPA 241 (2009 ED) CHAPTER 7 FOR THE CONSTRUCTION SITE DURING THE CONSTRUCTION PHASE.

**LEGEND**

- EXIT ACCESS TRAVEL DISTANCE FOR SPRINKLER = 250-FT MAX (TABLE 1017.2)
- ⊠ EXIT LIGHT
- ➔ EGRESS DISCHARGE = 32" WIDE MIN
- ⊞ 3A. 40BC MINIMUM RATED FIRE EXTINGUISHERS AT LOCATION INDICATED OR AS DIRECTED BY LOCAL FIRE MARSHAL. MINIMUM CODE IS W/IN 75'-0" TRAVEL DISTANCE FROM ANY AREA. CURRENT INSPECTION TAGS MUST BE ATTACHED TO EACH UNIT.
- ▨ EXIT ACCESS/PASSAGEWAY = 44" WIDE MIN

**BUILDING CODE INFORMATION**

- REVIEWING AGENCIES: CITY OF DANIA BEACH  
 100 WEST DANIA BEACH BLVD  
 DANIA BEACH, FL 33004  
 PH: (954) 924-6805  
 FAX: (954) 922-2686
- GOVERNING CODES: ALL WORK SHALL BE IN CONFORMANCE WITH, BUT NOT LIMITED TO, THE REQUIREMENTS OF THE FOLLOWING, AND ANY OTHER STATE OR LOCAL CODES HAVING JURISDICTION.  
 BUILDING: 2017 FLORIDA BUILDING CODE - 6TH EDITION  
 PLUMBING: 2017 FLORIDA PLUMBING CODE  
 MECHANICAL: 2017 FLORIDA MECHANICAL CODE  
 ELECTRICAL: 2011 NATIONAL ELECTRIC CODE  
 FIRE/LIFE SAFETY: 2012 NFPA, FLORIDA FIRE PROTECTION CODE 6TH EDITION  
 ACCESSIBILITY: 2017 FLORIDA ACCESSIBILITY CODE  
 ENERGY: 2017 FLORIDA ENERGY CODE
- NUMBER OF LEVELS: 1 OF 1
- CONSTRUCTION TYPE: TYPE II-B, SPRINKLED
- OCCUPANCY: M (MERCANTILE)
- NUMBER OF EMPLOYEES: MAX 3 AT ONE TIME
- OCCUPANT LOAD:
 

OCCUPANCY	AREA	SO FT PER OCCUPANT	OCCUPANTS
SALES AREA	4,115 SF	60	= 68
STOCKROOM	898 SF	300	= 2
TOTAL	5,013 SF		70
- EXIT REQUIREMENTS: (2) REQUIRED / (2) PROVIDED
- EXIT ILLUMINATION: PROVIDE AS SHOWN ON ELECTRICAL SHEETS.
- FIRE SPRINKLERS: EXG SPRINKLER MAIN/CONNECTIONS BY LL. PROVIDE AN AUTOMATIC FIRE SPRINKLER SYSTEM IN CONFORMANCE W/ CURRENT STANDARDS/LOCAL CODES/REGULATIONS, FLORIDA ADMINISTRATIVE CODE 61G15-32.003 AND .004. ALL WORK TO BE PERFORMED BY A LICENSED SPRINKLER CONTRACTOR, APPROVED BY LANDLORD, WHO SHALL DESIGN AND PREPARE SHOP DRAWINGS FOR APPROVAL PRIOR TO FABRICATION AND INSTALLATION.

SEAL:

PATRICK G. BLEES, ARCHITECT

04/03/19

DATE ISSUED

AR93439

REG. NO.

**LUCKY BRAND**

DANIA POINTE

1763 POINTE BLVD  
DANIA BEACH, FL  
33004

SPACE #M115

SPECIALTY

SHEET TITLE:

LIFE SAFETY PLAN

REVISIONS:  
ORIGINAL ISSUE: 01.17.19  
NO:1 DATE: 04/03/19 BY: BLDG

PROJECT NO: 18028.008

DRAWN BY: MGM

G4