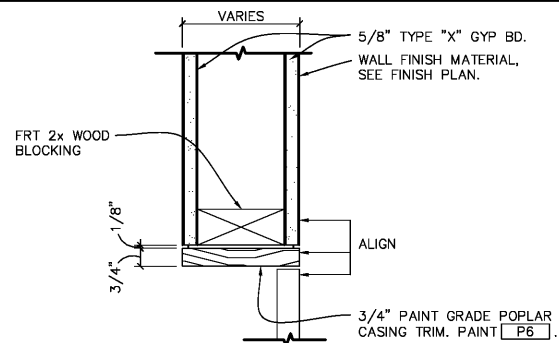
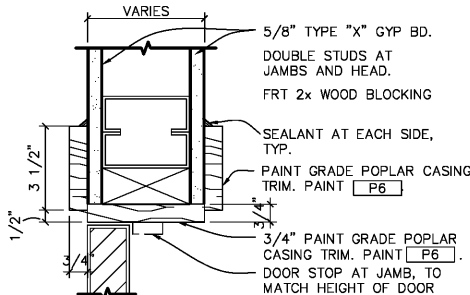


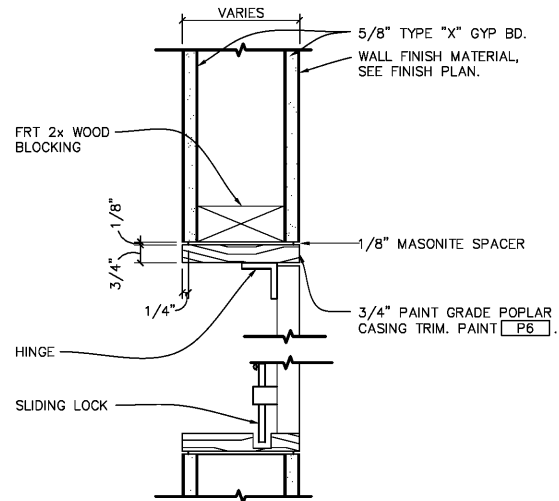
1 CASED OPENING - HEAD
G3 SCALE 3" = 1'-0"



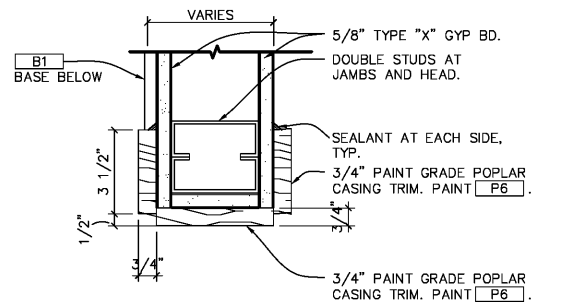
5 PANEL DOOR HEADER
G3 SCALE 3" = 1'-0"



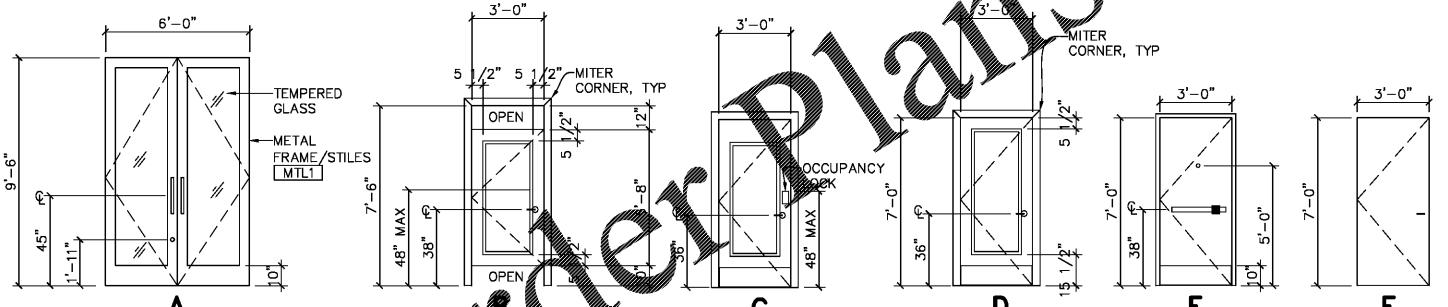
2 TYPICAL WOOD DOOR HEAD/JAMB
G3 SCALE 3" = 1'-0"



6 PANEL DOOR JAM
G3 SCALE 3" = 1'-0"



3 CASED OPENING - JAMB
G3 SCALE 3" = 1'-0"



4 DOOR TYPES
G3 1/4" = 1'-0"

DOOR SCHEDULE																
DOOR NO.	ROOM	SIZE	THICK	TYPE	MTL	FINISH	LABEL	GLAZ	HWDR GROUP	FRAME			DETAILS			KEYED NOTES
										MTL	FINISH	LABEL	HEAD	JAMB	SILL	
101	ENTRY	(2) 3'-0" x 9'-6"	N/A	A	ALUM	BLACK	N/A	TEMPERED	5	N/A	N/A	N/A	---	---	2/A1.1	1,4,5,7
102	FITTING	3'-0" x 5'-8"	1-3/4"	B	WD	P6	N/A	N/A	2	WD	P6	N/A	1/G3	2/G3	---	---
103	FITTING	3'-0" x 5'-8"	1-3/4"	B	WD	P6	N/A	N/A	2	WD	P6	N/A	1/G3	2/G3	---	---
104	FITTING	3'-0" x 5'-8"	1-3/4"	B	WD	P6	N/A	N/A	2	WD	P6	N/A	1/G3	2/G3	---	---
105	FITTING	3'-0" x 5'-8"	1-3/4"	B	WD	P6	N/A	N/A	2	WD	P6	N/A	1/G3	2/G3	---	---
106	ADA FITTING	3'-0" x 5'-8"	1-3/4"	B	WD	P6	N/A	N/A	2	WD	P6	N/A	1/G3	2/G3	---	---
107	FITTING	3'-0" x 5'-8"	1-3/4"	B	WD	P6	N/A	N/A	2	WD	P6	N/A	1/G3	2/G3	---	---
108	TOILET 1	3'-0" x 7'-0"	1-3/4"	C	WD	P6	N/A	N/A	3	HM	WD	N/A	2/G3	2/G3	8/A1.1	---
109	TOILET 2	3'-0" x 7'-0"	1-3/4"	C	WD	P6	N/A	N/A	3	HM	WD	N/A	2/G3	2/G3	8/A1.1	---
110	ACCESS DOOR	2'-3 3/4" x 7'-0"	1-1/4"	F	WD	P3	N/A	N/A	6	WD	P3	N/A	5/G3	6/G3	---	6
111	ACCESS DOOR	3'-0" x 7'-0"	1-1/4"	F	WD	P3	N/A	N/A	6	WD	P3	N/A	5/G3	6/G3	---	6
112	ACCESS DOOR	3'-0" x 7'-0"	1-1/4"	F	WD	P3	N/A	N/A	6	WD	P3	N/A	5/G3	6/G3	---	6
113	STOCKROOM	3'-0" x 7'-0"	1-3/4"	D	WD	P6	N/A	N/A	4	WD	P6	N/A	2/G3	6/G3	4/A4.1	---
114	ACCESS DOOR	3'-0" x 7'-0"	1-1/4"	F	WD	P3	N/A	N/A	6	WD	P3	N/A	5/G3	6/G3	---	6
115	SERVICE	3'-0" x 7'-0"	1-3/4"	E	EXG	P6/LL	N/A	N/A	1	EXG	P6	N/A	---	---	7/A1.1	2,3

KEYED NOTES	CODE COMPLIANCE	GENERAL NOTES
<p>1. PROVIDE "THIS DOOR TO REMAIN UNLOCKED DURING BUSINESS HOURS" SIGNAGE ABOVE DOOR.</p> <p>2. HARDWARE FOR THIS DOOR HAS BEEN PROVIDED BY THE LANDLORD TO MEET THE NOA REQ OF THE EXTERIOR DOORS. CYLINDERS HAVE BEEN PROVIDED WITH CONSTRUCTION CORES AND ARE READY FOR FINAL KEYING BY THE TENANT. IF THE TENANT CHOOSES TO REMOVE EXISTING HARDWARE, ALL REMOVED HARDWARE IS TO BE RETURNED TO THE LANDLORD. ANY NEW HARDWARE MUST MAINTAIN THE NOA OF THE EXTERIOR DOOR.</p> <p>3. PAINT STOCKROOM SIDE OF DOOR AND FRAME [] AND EXTERIOR SIDE PER LL CRITERIA. INSTALL TENANT NAME AND SPACE NUMBER PER LL CRITERIA ON EXTERIOR SIDE.</p> <p>4. GC TO PREVENT STRIPPING & BURNING OF SCREW HEADS.</p> <p>5. MANUALLY-OPERATED EDGE OR SURFACE-MOUNTED FLOSH BOLTS, SURFACE BOLTS OR ANY TYPE DEVICE THAT MAYBE USED TO CLOSE OR RESTRAIN THE DOOR OTHER THAN THE OPERATION OF THE LOCKING DEVICE SHALL NOT BE USED AND ARE PROHIBITED.</p> <p>6. CUSTOM GLASS DOOR WITH CONCEALED HARDWARE BY G.C. PAINT DOOR TO MATCH ADJACENT WALL.</p> <p>7. STOREFRONT DOOR AND HARDWARE WILL NEED TO HAVE A STATEWIDE PRODUCT APPROVAL WITH APPROVED USE IN THE BUSINESS FOR LARGE MISSILE IMPACT. HARDWARE SCHEDULED HARDWARE SET WITH FLORIDA APPROVED CERTIFICATION/NUMBER.</p>	<p>1. EXIT DOORS SHALL BE OPENED FROM THE INSIDE WITHOUT THE USE OF A SPECIAL KNOWLEDGE OR EXCESSIVE FORCE FOR INTERIOR AND EXTERIOR DOORS SHALL NOT EXCEED: INTERIOR DOORS: 5 LBS EXTERIOR DOORS: 8.5 LBS THE RATED DOOR: 15 LBS</p> <p>2. HAND OPERATED DOOR OPENING HARDWARE TO BE MOUNTED 38" AFF AND OPERATED WITH A SINGLE EFFORT BY LEVER TYPE HARDWARE.</p> <p>3. THE BOTTOM 10" OF ALL DOORS SHALL HAVE A SMOOTH, UNINTERRUPTED SURFACE.</p>	<p>1. DOOR LOCKS TO BE COMPATIBLE WITH "INSTAKEY" 6-PIN LOCK CYLINDERS.</p> <p>2. ALIGNMENT OF DOOR HEADS SHALL BE AT A CONSTANT LEVEL AND NOT FOLLOW POTENTIAL VARIATIONS IN THE FLOOR PLANS.</p> <p>3. UNDER CUT DOOR 3/4" MINIMUM.</p> <p>4. OFFSETS AT ALL THRESHOLDS AND AT ANY CHANGE OF FLOORING MATERIAL SHALL HAVE A MAXIMUM OF 1/2". OFFSETS GREATER THAN 1/4" REQUIRE A MAXIMUM BEVELED SLOPE OF 1 UNIT VERTICAL TO 2 UNITS HORIZONTAL, EXCEPT THAT LEVEL CHANGES NOT EXCEEDING 1/4" MAYBE VERTICAL.</p> <p>5. DOOR AND HARDWARE SUBSTITUTIONS TO BE APPROVED BY LUCKY BRAND STORE DESIGNER.</p>

HARDWARE SCHEDULE						
NO.	ITEM	QTY	MANUFACTURER	MODEL NO.	FINISH	COMMENTS
GROUP 1	HINGES	6	---	---	---	STOREFRONT MANUFAC.
	CLOSER	2	---	---	---	CONCEALED CLOSERS.
	HANDLE/PULL	2	ROCKWOOD	RM5230-12	OIL RUBBED BRONZE	PROVIDED BY LBJ, INSTALLED BY GC.
	LOCK	1	ADAMS	1750-A-3PT	OIL RUBBED BRONZE	TO RECEIVE BEST 6-PIN CORE AT TURN-OVER; EXTENDED THROW REQ.
	CYLINDER	2	INSTAKEY	---	BLACK	6 PIN TYPE
	THRESHOLD	1	PEMCO	229D	BLACK	---
	WEATHERSTRIPPING	1 SET	PEMCO	5025	---	PERIMETER & ASTAGRAL SEALS
	DUST PROOF STRIKES	1	QUALITY HARDWARE	1226-626 NT	BLACK	---
GRP 2	HOLD OPEN	2	IVES	FS-450	BLACK	---
	HINGES	2	MCKINNEY	TA-2714 x 613	OIL RUBBED BRONZE	4 1/2" x 4 1/2", SELF-CLOSING TYPE, SUPPLIED BY LB, INSTALLED BY GC
	LEVER SET	1	YALE	MO 5042LNx613	OIL RUBBED BRONZE	PRIVACY TYPE, SUPPLIED BY LB, INSTALLED BY GC
	WALL STOP	1	DOOR CONTROLS	3211WUS10B	OIL RUBBED BRONZE	SUPPLIED BY LB, INSTALLED BY GC
	HINGES	3	MCKINNEY	TA-2714 x 652	OIL RUBBED BRONZE	4 1/2" x 4 1/2"
	LEVER SET	1	YALE	MO 5402LNx626	OIL RUBBED BRONZE	PASSAGE
GROUP 3	CLOSER	1	FALCON	SC81RW/PA	630 STAINLESS STEEL	MOUNT ON RESTROOM SIDE, FULL COVE CLOSER.
	KICK PLATE	1	TRIMCO	K0050 LDW	OIL RUBBED BRONZE	34"W X 10"H AT PUSH SIDE ONLY
	FLOOR STOP	1	DOOR CONTROLS	3310x630	630 STAINLESS STEEL	---
	SILENCER	3	DOOR CONTROLS	95xGREY	---	---
	LOCK	1	SCHLAGE	B571X613	OIL RUBBED BRONZE	"OCCUPIED/VACANT" DEADBOLT
	HINGES	3	MCKINNEY	TA-2714 x 652	OIL RUBBED BRONZE	4 1/2" x 4 1/2"
GROUP 4	LEVER SET	1	YALE	5405 LN	OIL RUBBED BRONZE	PASSAGE TYPE, MONROE LEVER
	CLOSER	1	NORTON	8501-689	630 STAINLESS STEEL	MOUNT ON STOCKROOM SIDE
	KICK PLATE	1	TRIMCO	K0050 LDW	OIL RUBBED BRONZE	34"W X 10"H AT PUSH SIDE ONLY
	FLOOR STOP	1	IVES	FS-450	US28	FLOOR MOUNTED
	SILENCER	3	DOOR CONTROLS	95xGREY	---	---
	HINGES	4	---	---	---	PIVOT STYLE PROVIDED BY STOREFRONT DOOR MANUFAC.
GROUP 5	CLOSER	2	---	---	---	CONCEALED CLOSERS.
	HANDLE/PULL	2	ROCKWOOD	RM5230-12*	OIL RUBBED BRONZE	PROVIDED BY LBJ, INSTALLED BY GC.
	LOCK	1	ADAMS	1750-A-3PT*	OIL RUBBED BRONZE	TO RECEIVE BEST 6-PIN CORE AT TURN-OVER; EXTENDED THROW REQ.
	CYLINDER	2	INSTAKEY	---	BLACK	6 PIN TYPE
	DUST PROOF STRIKES	1	QUALITY HARDWARE	1226-626 NT*	BLACK	---
	HOLD OPEN	2	IVES	FS-450*	BLACK	---
GRP 6	HINGES	2	---	---	STAINLESS	---
	SLIDING BOLT	1	---	---	WHITE	---

PATRICK G. BLEES
architecture · planning · interior design

PATRICK G. BLEES ARCHITECT, PLLC
800 WASHINGTON AVE. N., SUITE 208
MINNEAPOLIS, MN 55401-1330
PHONE: (612) 547-1300
FAX: (612) 547-1301

CONTACT: ELYV B. CLEARY
ecleary@cmarch.com

PATRICK G. BLEES, ARCHITECT

04/03/19
DATE ISSUED
AR93439
REG. NO.

LUCKY BRAND

DANIA
POINTE

1763 POINTE BLVD
DANIA BEACH, FL
33004

SPACE #M115

SPECIALTY

SHEET TITLE:
DOOR SCHEDULES
AND DETAILS

REVISIONS:
ORIGINAL ISSUE: 01.17.19
NO. 1 DATE: 04/03/19 BY: BLDG

PROJECT NO: 18028.008
DRAWN BY: LNC

G3