

**ELECTRICAL KEY NOTES**

TAG	QTY	NAME	ELECTRICAL REQUIREMENTS
1	3	ACLR4C-1	120V, 1PH, 720W DEDICATED CIRCUIT W/ ISOLATED GROUND RECEPTACLE FOR USCAN CHECKOUT LANE. ADDITIONAL QUAD OUTLET (86W TOTAL) ON A SEPARATE CIRCUIT FOR EAS DEACTIVATOR.
1	1	ACLR4C-1	120V, 1PH, 720W DEDICATED CIRCUIT W/ ISOLATED GROUND RECEPTACLE FOR USCAN CHECKOUT LANE. ADDITIONAL QUAD OUTLET (86W TOTAL) ON A SEPARATE CIRCUIT FOR EAS DEACTIVATOR.
1	1	AJAS	120V, 10A MIN. DEDICATED CIRCUIT FOR ENTERPRISE SELF-CHECKOUT ATTENDANT STATION
1	1	ESBAS	120V, 200W DEDICATED CIRCUIT FOR POS EQUIPMENT FOR SCO ATTENDANT STATION
1	2	E38TP	175W FOR THERMAL PRINTER
1	1	E38TS	18W FOR TOUCHSCREEN POS (FOR OEM MOUNT)
1	3	GE156	120V 250W ELEC FED FROM RACEWAY FOR EFF PIN PAD & CREDIT CARD READER
1	1	GS36S	29W (DEDICATED CKT) FOR POS TERMINAL. WIRED TO KROGER SUB PANEL (NOT STARBUCKS PANEL)
1	2	GE38	120V 250W FOR REGISTER (DEDICATED CKT)
1	1	CLE1	120V, 1PH, 168W FOR KROGER HANDHELD24 UNIT CHARGING BASE STATION.
1	8	E38PS	120V, 168W, 1PH
1	1	PL24-2	529W, COORDINATE RECEPTACLE LOCATION WITH MANUFACTURE OF WATER COOLER USED (REQ'D. LOCKED ON DEVICE @ PANEL)
1	1	DA50BHX	50W FOR FANS, 177W FOR LIGHTS ON 8' V.S. BEV. CASE. MOUNT J.B. 1'-6" AB FL
1	1	D15450W	208V, 1PH, 37A (NEMA 5-50P) FOR SMALL SINGLE STACK CONVEYOR TOASTER OVEN FOR SANDWICH ONLY
1	1	D150C-20B	(2) 208V, 3PH, 4W, 45.7A (16.5KW) (50 AMP BREAKER EACH) 2'-0" AB FL, SHUNT TRIP CIRCUIT BREAKERS REQUIRED FOR DOUBLE COMBI CHICKEN OVENS
1	1	D150S-20B	208V, 3PH, 4W, 45.7A (16.5KW) (50 AMP BREAKER) 2'-0" AB FL, SHUNT TRIP CIRCUIT BREAKER REQUIRED FOR SINGLE COMBI CHICKEN OVEN & STAND
1	1	D195-2	120V, 13.2AMP, 1PH FOR UNDER COUNTER HOT HOLDING CABINET
1	1	D195-3	208V, 13.8AMP, 1PH FOR PASS THRU HOT HOLDING CABINET
1	1	D195-5	120V, 17.4AMP, 1PH FOR CLOUT LIST SOLID BACK HOT HOLDING CABINET. CABINET COMES FROM MANUFACTURER WITH CORD AND (NEMA 5-20P) TYPE PLUG SET.
1	6	D23T	120V 1PH .75AMPS FOR SERVICE SCALE/UPC PRINTER (TOLEDO), PROVIDE A 3/4" CONDUIT TO ECR ROOM
1	1	D25	312W 4'-0" AB FL FOR AUTOMATIC SLICER
1	1	D28	504W 4'-0" AB FL FOR MANUAL SLICER
1	4	D2891V-4B	120V, 180W, 1PH, FOR 48" DIGITAL MONITOR FOR DELI MENU BOARD
1	2	D77B	1150W FOR RICE COOKER
1	1	D1745CB	115V, 10 AMPS FOR S.C. PIZZA MAKE-UP TABLE. MOUNT RCPT. 2'-0" AB FL. (REQ'D. LOCKED ON DEVICE @ PANEL)
1	1	D2035CJ	120V, 8.4 AMP, 1PH FOR 3 DOOR DELI STORAGE REFRIGERATOR (SELF-CONTAINED) EQUIPPED WITH A NEMA 5-15P PLUG.
1	1	D2045C2	1788W FOR 2 DOOR DELI STORAGE FREEZER (SELF-CONTAINED)
1	1	D2705C1-2	120V, 240W, 1PH, FOR UNDERCOUNTER REFRIGERATOR
1	1	DCC5A	ALL COMPONENTS WIRED TO SINGLE PHASE LOAD SUB PANEL. SWITCHES INCLUDED FOR ALL APPLICABLE COMPONENTS.
1	1	DHFMD4H	208V, 17AMP, 1PH FOR 4' SELF SERVICE MULTI DECK HOT CASE, L14-30P NEMA PLUG.
1	1	DFMD4H	208V, 8W FOR FANS, 27W FOR LED LIGHTS FOR 4' MDLP SELF SERVICE IN LINE COLD FOOD CASE
1	3	DMS45S	120V, 218W, 1PH FOR 4' MOBILE SELF CONTAINED DELI CASE, L5-30P NEMA PLUG.
1	3	DMS45S	240V, 536W, 1PH FOR 4' MOBILE SELF CONTAINED DELI CASE, L14-30P NEMA PLUG.
1	1	DPSWSTAT	120V, 1PH, 27W FOR FLOWEVER, 120V, 1PH, 144W FOR UNDERCOUNTER
1	2	DS8E	20W FOR FANS, 90W FOR AMB FANS, 800W A/S HTS, 177W FOR LIGHTS
1	34	GM17S-4	120V, 411.5W, FOR 4 FT KPWR LIGHTED SHELVING SECTION
1	4	GM20RM	120V, 64.5W, FOR HIGH PROFILE KPWR/OTC ENDCAP
1	2	GM7M-4S	120V, 82.3W, FOR 4 FT KPWR/OTC LIGHT VALANCE (STARTER)
1	32	GM7M-4	120V, 82.3W, FOR 4 FT KPWR/OTC LIGHT VALANCE
1	2	E102	56W FOR THINCLIENT & MONITOR
1	1	E12C	960W FOR LASER PRINTER (GENERAL USE)
1	2	E47	120V, 100W FOR LABEL PRINTER
1	1	F47WL	(2)120V, 22A DUPLEX OUTLETS & 112W FOR LIGHTS ON FLORAL WORKSTATION
1	1	FSDN12HX	75W FOR FANS, 250W FOR LIGHTS ON 12'-5-DECK NARROW FLORAL CASE
1	1	FSDN8HX	50W FOR FANS, 177W FOR LIGHTS ON 8'-5-DECK NARROW FLORAL CASE
1	3	GE15	15W FOR SCIENCE FLY ZAPPER (MOUNT @ 6" AFF TO BOTTOM)
1	1	GE1	115V/60HZ 80W 7'-6" AB FL FOR RECEPTACLE. MOUNT SWITCH 5'-6" AB FL. MOUNT BOTTOM OF FLYZAPPER 4'-0" AFF.
1	1	H2R2	208V, 1400W FOR DYSON HAND DRYER
1	2	GSNSCAM-120	120V, 21 AMP, 1PH FOR 4' FIVE DECK NARROW SELF-CONTAINED GROCERY MERCH. COMES WITH 9' CORD WITH NEMA L5-30P PLUG.
1	1	M11T	120V 1PH .75AMPS FOR SERVICE SCALE/UPC PRINTER (TOLEDO), MOUNT RCPT 4'-0" AB FL. PROVIDE A 3/4" CONDUIT TO ECR ROOM
1	1	M18H	120V 1PH 8.1 AMPS (NEMA 5-15) FOR MEAT TENDERIZER
1	2	M27E	2000W (NON-CONTINUOUS) 20A DEDICATED CIRCUIT FOR ENERGY EFFICIENT 3-ROLL WRAPPER (NO WINGS). MOUNT RCPT. 2'-0" AB FL.
1	1	M3AD	120V, 28W, 1PH, FOR RAD CHARGING STATION.
1	3	M3DFRNG12HX	150W FOR FANS, 510W FOR LIGHTS ON 12' FIVE DK FRESH MEAT CASE. MOUNT J.B. 1'-6" AB FL
1	1	M3DFRNG8HX	100W FOR FANS, 354W FOR LIGHTS ON 8' FIVE DK FRESH MEAT CASE. MOUNT J.B. 1'-6" AB FL
1	1	M3D12HE	120V, 132W FOR FANS, 95W FOR LIGHTS ON 12FT GLASS DOOR MEAT CASE. MOUNT J.B. 1'-6" AB FL
1	1	M3D8HE	120V, 95W FOR FANS, 65W FOR LIGHTS ON 8FT GLASS DOOR MEAT CASE. MOUNT J.B. 1'-6" AB FL
1	1	M3SHK-2	120V, 4.7W FOR AIRSWEEP FANS, 62W FOR LED LIGHTS, 180W FOR CONVENIENCE OUTLET, FOR 8' SERVICE MEAT CASE
1	1	M4D12HX	280W FOR FANS & A.S. HTS, 4800W (208V, 1PH) FOR ELEC DEF (ROUTE CONDUIT TO MECH CENTER OR PROTOCOL UNIT FOR CONTROL CKT & DEFROST WIRING) ON 12' WIDE ISLAND GROCERY CASE (ICE CREAM TEMP)
1	1	M4D18HX	200W FOR FANS & A.S. HTS, 3200W (208V, 1PH) FOR ELEC. DEF. (ROUTE CONDUIT TO MECH CENTER OR PROTOCOL UNIT FOR CONTROL CKT & DEFROST WIRING) ON 8' WIDE ISLAND GROCERY CASE (ICE CREAM TEMP)
1	1	M4D18HX	88W FOR FANS & A.S. HTS, 1360W (208V, 1PH) FOR ELEC DEF (ROUTE CONDUIT TO MECH CENTER OR PROTOCOL UNIT FOR CONTROL CKT & DEFROST WIRING) ON WIDE ISLAND GROCERY CASE END
1	1	M31T	120V 1PH .75AMPS FOR SERVICE SCALE/UPC PRINTER (TOLEDO), MOUNT RCPT 4'-0" AB FL. PROVIDE A 3/4" CONDUIT TO ECR ROOM
1	1	P0225C_CM	120V, 15AMP, 1PH FOR 2' MOBILE CASE (SELF CONTAINED)
1	1	PS08HX	50W FOR FANS, 118W FOR LIGHTS ON 8' PRODUCE WALL CASE. MOUNT J.B. 1'-6" AB FL
1	4	PMS08HX_CM	240V, 16.9AMP, 1PH (30 AMP CIRCUIT REQUIRED) FOR 6' BERRY CASE (SELF CONTAINED) UNIT COMES WITH L14-30P NEMA PLUG.
1	1	SS8HC-DSFM	88W FOR FANS, 89W FOR ANTIWEAT HTS, AND 15A CONVENIENCE OUTLET
1	2	SWL18HX	200W FOR FANS & A.S. HTS, 3200W (208V, 1PH) FOR ELEC. DEF. (ROUTE CONDUIT TO MECH CENTER OR PROTOCOL UNIT FOR CONTROL CKT & DEFROST WIRING) ON 8' WIDE ISLAND GROCERY CASE (ICE CREAM TEMP)
1	2	SWL18HX	88W FOR FANS & A.S. HTS, 1360W (208V, 1PH) FOR ELEC DEF (ROUTE CONDUIT TO MECH CENTER OR PROTOCOL UNIT FOR CONTROL CKT & DEFROST WIRING) ON WIDE ISLAND GROCERY CASE END
1	1	T4SC-2	360W, 120V, 1PH, FOR 4' TABLE W/REF. BASE (SELF CONT.)
1	1	T6SC	1265W FOR 6' TABLE W/REF. BASE (SELF-CONT.)
1	1	T8SC	115V 10AMP FOR 8' SELF-CONTAINED TABLE W/REFRIG. BASE

**CONTACTOR SCHEDULE (KROGER PROVIDED)**

TAG	COIL	AMPERAGE	POLES	LOAD
CTIL	120	30	12	SPECIALTY LIGHTING
CTDB	120	30	2	DELI/BKRY PREP W/ MOMENTARY OVERRIDE
CTRX	120	30	2	PHARMACY W/ MOMENTARY OVERRIDE
CTSF	120	30	2	SEAFOOD PREP W/ MOMENTARY OVERRIDE
CTCL	120	30	6	CASE LIGHTING

**LOAD BREAKDOWN (MDPA)**

SERVICE : 120/208V-3PH-4W, 2500A

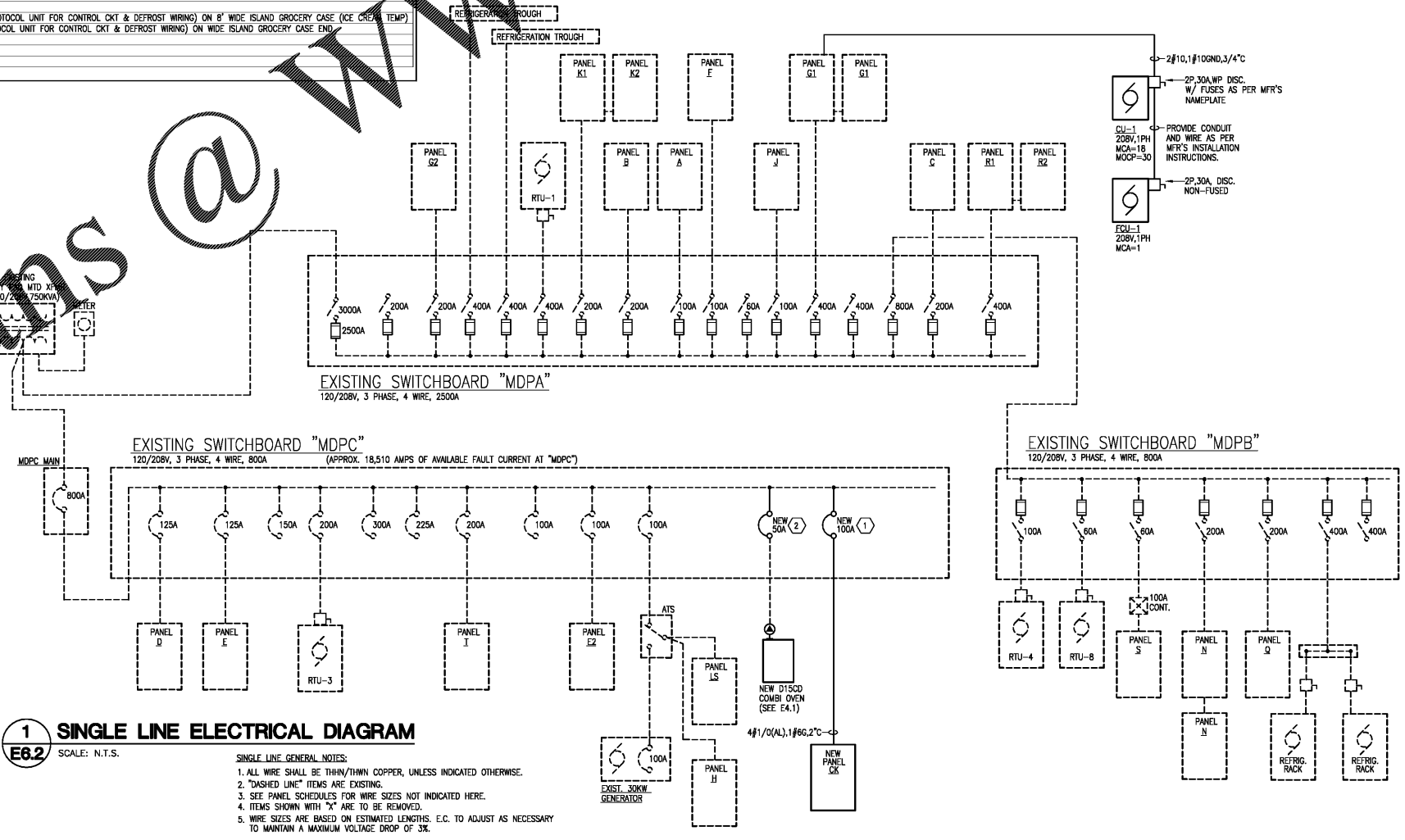
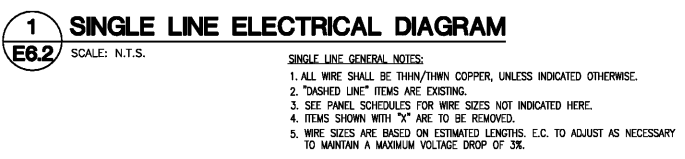
CONNECTED LOAD	CONNECTED KVA
EXISTING DEMAND LOAD: 457 KWD (1.05 PF)(1.25)	6.1
ADDED RECEPTACLES	1.1
ADDED REFRIGERATION EQUIP.	14.0
ADDED MISC. EQUIP.	28.7
<b>TOTAL:</b>	<b>716.1 KVA</b>
$\pm \sqrt{3} \cdot 208 =$	<b>1,989 AMPS</b>

**LOAD BREAKDOWN (MDPC)**

SERVICE : 120/208V-3PH-4W, 800A

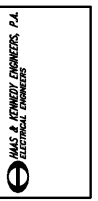
CONNECTED LOAD	CONNECTED KVA
EXISTING DEMAND LOAD: 146 KWD (1.05 PF)(1.25)	214.7
ADDED RECEPTACLES	0.9
ADDED REFRIGERATION EQUIP.	9.3
ADDED KITCHEN EQUIP. (PER NEC)	15.9
ADDED MISC. EQUIP.	3.4
<b>TOTALS:</b>	<b>244.2 KVA</b>
$\pm \sqrt{3} \cdot 208 =$	<b>678 AMPS</b>

- SINGLE LINE NOTES (SPECIFIC)**
- PROVIDE AND INSTALL NEW BREAKER AS INDICATED IN EXISTING SPACE, TYPE AND AIC RATING TO MATCH EXISTING. FIELD VERIFY CONDITIONS AND BREAKER AVAILABILITY PRIOR TO BID.
  - REPLACE EXISTING 80A BREAKER FEEDING COMBI OVEN WITH NEW 50A SHUNT TRIP BREAKER TIED TO HOOD FIRE SYSTEM FOR AUTOMATIC EQUIPMENT SHUT-DOWN UPON SYSTEM ACTIVATION. BREAKER TYPE AND AIC RATINGS TO MATCH EXISTING. FIELD VERIFY CONDITIONS.



Original Plans @ WWW.LDILine.com

WWW.LDILine.com



CONSULTANT

**A REMODEL FOR:**

**KROGER GA-214**

3139 US HWY 278, N.E. COVINGTON, GA

PROJECT: KROGER ATLANTA

DATE: 04-01-2019

CONSTRUCTION SET

**SINGLE LINE ELECTRICAL DIAGRAM**

SHEET TITLE

REVISIONS

NO.	DATE	DESCRIPTION

PROJECT NO: 19085  
 OLD DWG FILE: GA-214 E6.2  
 DRAWN BY: WSM  
 CKD BY: HCK

**E6.2**

SHEET NO.