

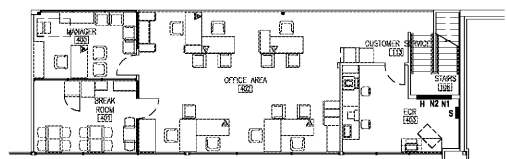
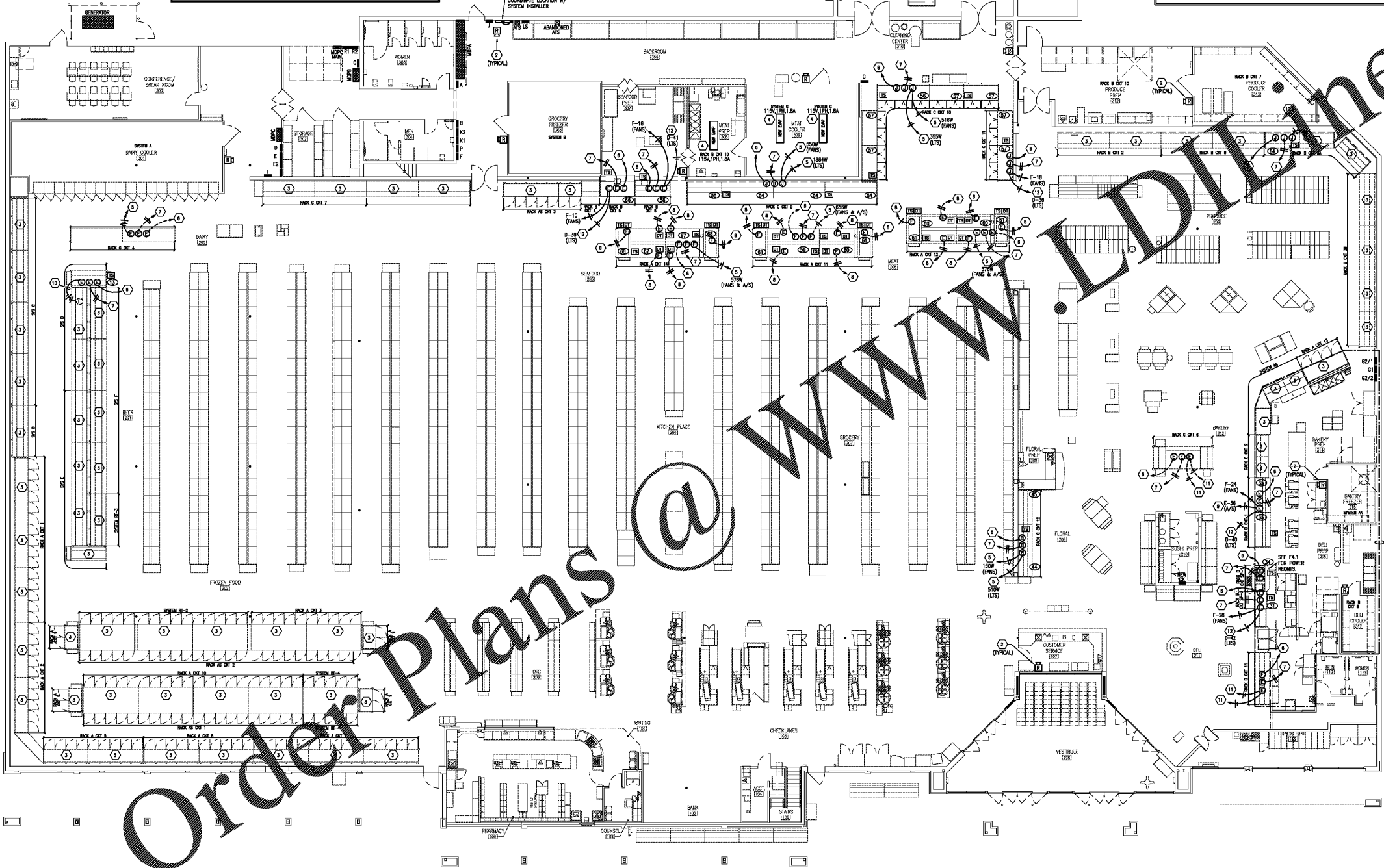
- REFRIGERATION POWER NOTES (GENERAL)**
1. REFER TO KEY NOTE ON SHEET E1.2 FOR EQUIPMENT CONNECTIONS, MOUNTING HEIGHTS, ETC.
 2. PROVIDE CHANGE RECEIPTABLE FOR ISOLATED GROUND EQUIPMENT WITH WAREPLATE FOR COMPUTORIZED EQUIPMENT ONLY.
 3. SEE SPECIFICATIONS FOR INFORMATION ON KROGER DIRECT BUY PROGRAM.
 4. ALL ELECTRICAL CONDUITS IN THE SALES AREA DESCENDING FROM ROOF FRAMING TO EITHER LOW WALLS OR EQUIPMENT SHOULD BE COORDINATED AND GROUPED TOGETHER WITH OTHER MECHANICAL PIPES.
 5. ALL JUNCTION BOXES ARE 120V UNLESS INDICATED OTHERWISE.
 6. RUN CONDUITS OUTSIDE INSULATED WALL PANELS, STUB THRU TO OUTLET BOXES INSIDE PREP ROOMS.
 7. ONLY SURFACE MOUNTED CONDUIT PERMITTED IN THE DELI AND BAKERY PREP AREAS SHALL BE ON THEIR COOLER AND FREEZER WALLS AND CEILINGS. NO SURFACE MOUNTED CONDUIT IS ALLOWED IN MEAT AND PRODUCE PREP ROOMS.
 8. COORDINATE REQUIREMENTS FOR TEMPERATURE AND HUMIDITY SENSORS WITH THE MECHANICAL AND EMS CONTRACTORS. SEE E30-4E.
 9. FIELD VERIFY ALL EXISTING CONDITIONS.
 10. IDENTIFY CIRCUIT #S IN PANEL AND ON RED LINE 740-SHULT SET.
 11. SEE SPECIFICATIONS FOR INFORMATION ON KROGER DIRECT BUY PROGRAM.
 12. MOUNT ALL DISCONNECTS AT 5'-0" ABOVE FINISHED FLOOR TO DISCONNECT HANDLE OR AT HEIGHT WHERE SPECIFICALLY REQUIRED.
 13. COORDINATE REQUIREMENTS FOR TEMPERATURE AND HUMIDITY SENSORS WITH THE MECHANICAL AND EMS CONTRACTORS. SEE E30-4E.
 14. WALL MOUNTED CASES: PROVIDE 8 FEET OF FLEXIBLE CONDUIT FOR REFRIGERATED CASES CONNECTED TO WALL JUNCTION BOX WITH ELECTRICAL CONDUCTORS RUNNING CONTINUOUSLY THROUGH JUNCTION BOX AND FLEXIBLE CONDUIT FOR CONNECTION TO CASES BY INSTALLATION CONTRACTOR.
 15. ISLAND REFRIGERATED CASES: PROVIDE 8 FEET OF FLEXIBLE CONDUIT FOR REFRIGERATED CASES CONNECTED TO FLOOR MOUNTED JUNCTION BOX WITH ELECTRICAL CONDUCTORS RUNNING CONTINUOUSLY THROUGH JUNCTION BOX AND FLEXIBLE CONDUIT FOR CONNECTION TO CASES BY INSTALLATION CONTRACTOR.
 16. SERVICE REFRIGERATED CASES: PROVIDE 8 FEET OF FLEXIBLE CONDUIT FOR REFRIGERATED CASES CONNECTED TO FLOOR MOUNTED PLASTIC JUNCTION BOX AND LAD WITH ELECTRICAL CONDUCTORS RUNNING CONTINUOUSLY THROUGH JUNCTION BOX AND SEAL-TIGHT CONDUIT FOR CONNECTION TO CASES BY INSTALLATION CONTRACTOR.
 17. PROVIDE WP JUNCTION BOX FED FROM UNDER SLAB WITH POWER CONDUCTORS INSTALLED IN LIQUID TIGHT (SAL-TIGHT) CONDUIT TO CASES IN OR IMMEDIATELY ADJACENT TO A WASH DOWN AREA SUCH AS SEAFOOD, MEAT, DELI, AND BAKERY PREP AREAS.

- REFRIGERATION ELECTRICAL NOTES (SPECIFIC)**
1. ALTERNATE #1: REFRIGERANT LEAK DETECTION CONTROL PANEL. COORDINATE EXACT LOCATION IN FIELD. REFRIGERANT LEAK DETECTION SYSTEM TO BE INSTALLED BY EMS CONTRACTOR. E.G. TO PROVIDE 120V POWER TO CONTROL PANEL AND ALL NECESSARY CONDUIT. SEE CONTRACT'S SPECIFICATIONS AND DA DWS FOR ADDITIONAL INFORMATION.
 2. ALTERNATE #2: REFRIGERANT LEAK DETECTION SYSTEM HORN/SIREN. ONE FOR EACH ZONE PLUS ONE IN CUSTOMER SERVICE OR MANAGER'S OFFICE. SEE SHEET E40.
 3. EXISTING REFRIGERATED CASE TO REMAIN.
 4. NEW DWP TO REPLACE EXISTING EXTEND POWER, CONTROL, AND SENSOR CIRCUITRY AS REQUIRED.
 5. EXTEND CIRCUITS MADE SPARE BY OMISSION OF EXISTING REFRIGERATED CASES. UTILIZE CONTROLLED CIRCUITS FOR LIGHTS AND ANTI-SWEATS. FIELD VERIFY AVAILABLE CIRCUITS AND LOADS.
 6. 1/2" W/ PULLSTRING TO ASSOCIATED REFRIGERATION UNIT / CONTROL PANEL FOR LOW VOLTAGE SENSOR CABLE. COORDINATE REQUIREMENTS WITH REFRIGERATION AND EMS CONTRACTORS.
 7. 1/2" W/ SEAL-UP TO ASSOCIATED REFRIGERATION SYSTEM FOR SOW CONTROL WIRING. VERIFY REQUIREMENTS WITH THE REFRIGERATION AND EMS CONTRACTORS. REUSE EXISTING WHERE POSSIBLE. SOW WIRE BY OTHERS.
 8. 2#14/1F/0.1" OR AS INDICATED ON PLAN TO ASSOCIATED REFRIGERATION UNIT OR DEFROST PANEL. VERIFY REQUIREMENTS WITH THE REFRIGERATION CONTRACTOR PRIOR TO INSTALLATION.
 9. ROUTE NEW ANTI-SWEAT CIRCUITS THROUGH ANTI-SWEAT CONTROL PANEL. COORDINATE REQUIREMENTS WITH THE REFRIGERATION CONTRACTOR.
 10. THE EXISTING ADJACENT CASE CIRCUITS AS INDICATED. NEW LOADS TO BE OFFSET BY REMOVAL EXISTING.
 11. EXTEND EXISTING CIRCUITS AS REQUIRED FOR RELOCATED CASES.
 12. RUN NEW CASE LIGHTING CIRCUITS THROUGH CONDUIT "TIE" FOR THIS CONTROL. FIELD COORDINATE LOCATION FOR CONDUIT, PROVIDE CONTROL, CABLE TO CASE PANEL AS REQUIRED.

NOTE: RUN CONDUITS OUTSIDE OF INSULATED WALL PANELS, STUB THROUGH TO OUTLET BOXES INSIDE PREP AREAS.

NOTE: ONLY SURFACE MOUNTED CONDUIT PERMITTED IN THE DELI AND BAKERY PREP AREAS SHALL BE ON THEIR COOLER AND FREEZER WALLS AND CEILINGS. SEE E30-2E.

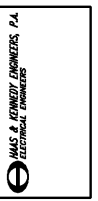
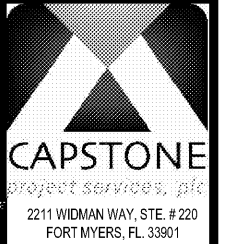
NOTE: NO SURFACE MOUNTED CONDUIT OR PIPING IS ALLOWED IN MEAT OR PRODUCE PREP ROOMS.



1 REFRIGERATION ELECTRICAL PLAN
E1.4 3/32" = 1'-0"

THE FOLLOWING TO BE PRICED AS ALTERNATES:

ALTERNATE #1 - ALL WORK IN DELI PREP AREA
 ALTERNATE #2 - ALL WORK IN FRONT RESTROOMS
 ALTERNATE #3 - ALL WORK IN REAR RESTROOMS
 ALTERNATE #4 - ALL WORK IN "TRUCK-UP" AREA
 ALTERNATE #5 - ALL WORK FOR REFRIGERANT LEAK DETECTION SYSTEM



CONSULTANT

A REMODEL FOR:
KROGER GA-214
 3139 US HWY 278, N.E. COVINGTON, GA

PROJECT: KROGER ATLANTA
 DATE: 04-01-2019
 CONSTRUCTION SET

REFRIGERATION ELECTRICAL PLAN

SHEET TITLE

NO.	DATE	DESCRIPTION

PROJECT NO: 19095
 CIO DWG FILE: GA-214 E1.4
 DRAWN BY: WSM
 CHECKED BY: HCK

E1.4
 SHEET NO.