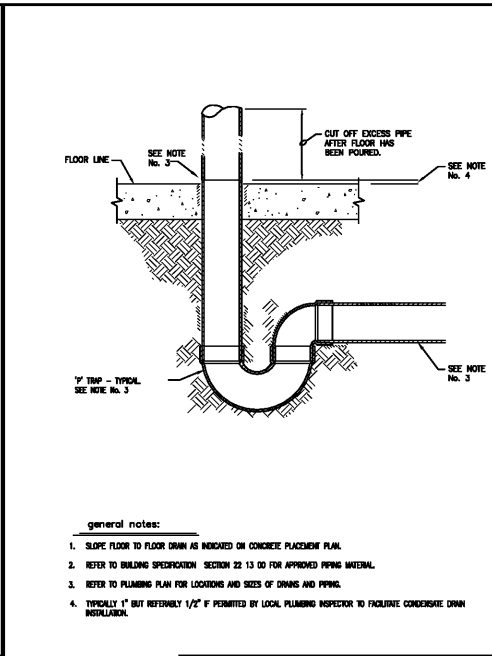


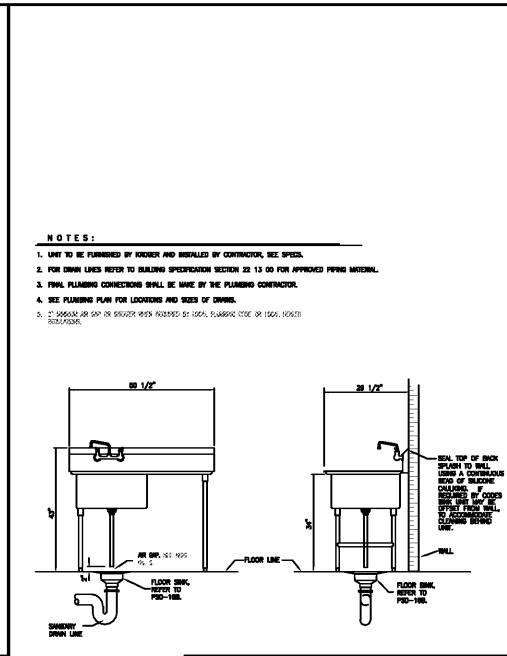
NOTES:

- DO NOT USE CASE DRAIN SMALLER THAN THE NOMINAL DIAMETER OF PIPE OR WATER BEAL SUPPLIED WITH THE REFRIGERATION.
- SLOPE THE CASE DRAIN IN THE DIRECTION OF FLOW 1/4" PER FT.
- CASE DRAIN MUST BE SUPPORTED NO MORE THAN 24" FROM DRAIN HUB TO THE.
- PROVIDE A SUITABLE AIR BREAK BETWEEN FLOOR RIM OF FLOOR DRAIN AND OUTLET OF CASE DRAIN. AN ALTERNATIVE IS TO CUT THE LAST SECTION OF CASE DRAIN AT AN ANGLE.
- 3" HUB DRAIN FOR PRODUCTS UNDER UNIFORM PLUMBING CODE AND 4" HUB DRAIN FOR PRODUCTS UNDER INTERNATIONAL PLUMBING CODE.

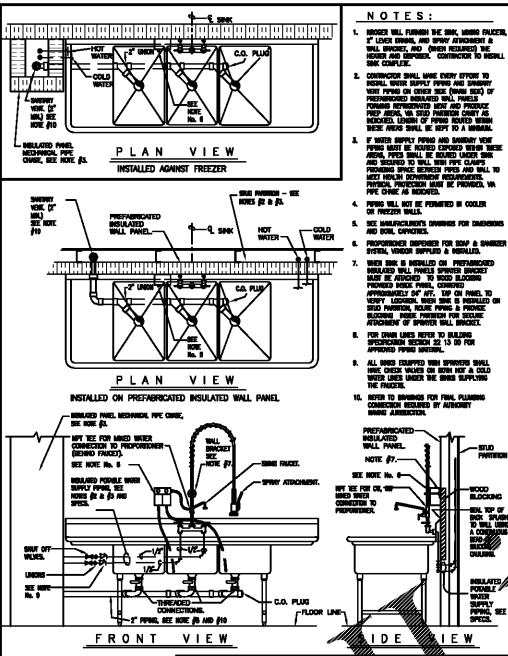
CASE DRAIN DETAIL
DATE: 10/11/12
SCALE: NONE
DRAWN: ZAW
MASTER SPECIFICATION DETAIL
PSD-1



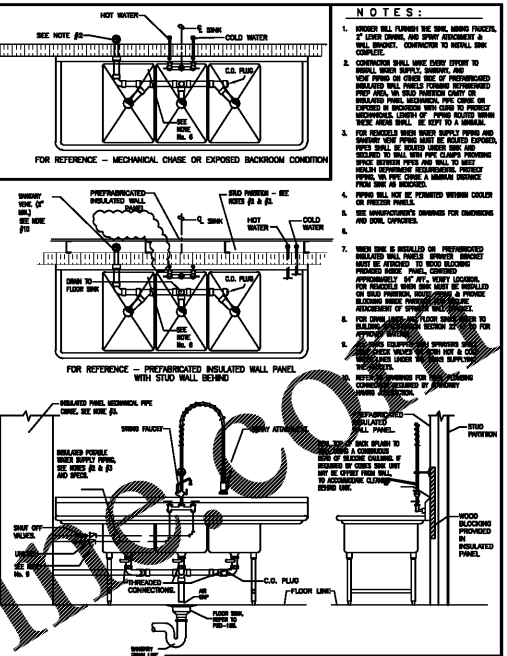
CONDENSATE DRAIN DETAIL
DATE: 11/15/17
SCALE: NONE
DRAWN: ZAW
MASTER SPECIFICATION DETAIL
PSD-1



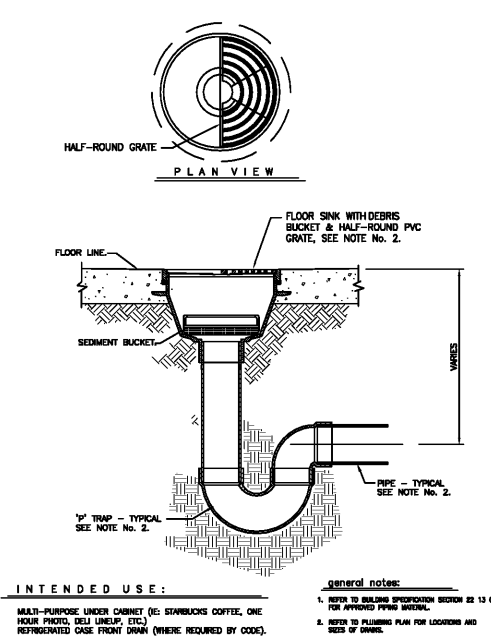
1-COMPARTMENT SINK
DATE: 11/15/17
SCALE: NONE
DRAWN: DCS/ZAW
MASTER SPECIFICATION DETAIL
PSD-5A



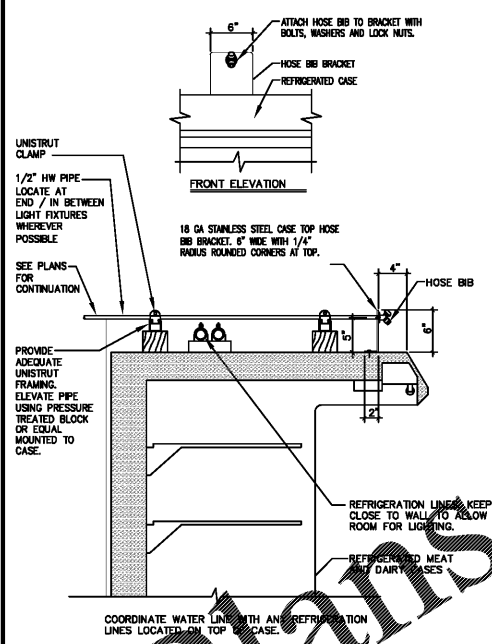
3-COMPARTMENT WASHING SINK
DATE: 8/9/18
SCALE: NONE
DRAWN: ZAW
MASTER SPECIFICATION DETAIL
PSD-7



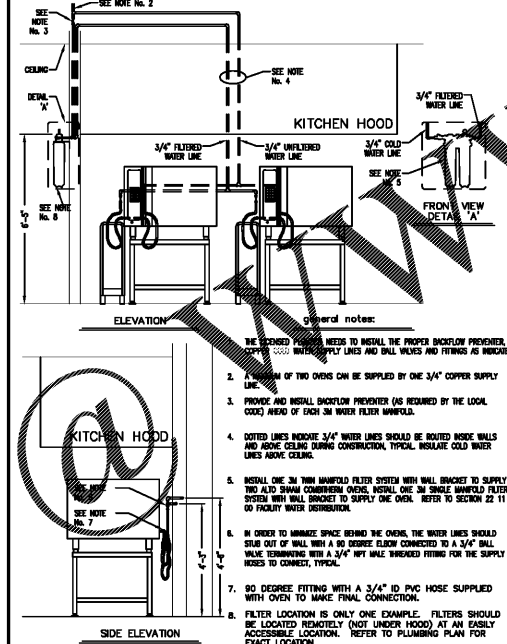
3-COMP CONDITIONING SINK FOR FOOD PREP
DATE: 6/15/18
SCALE: NONE
DRAWN: TMW/ZAW
MASTER SPECIFICATION DETAIL
PSD-7A



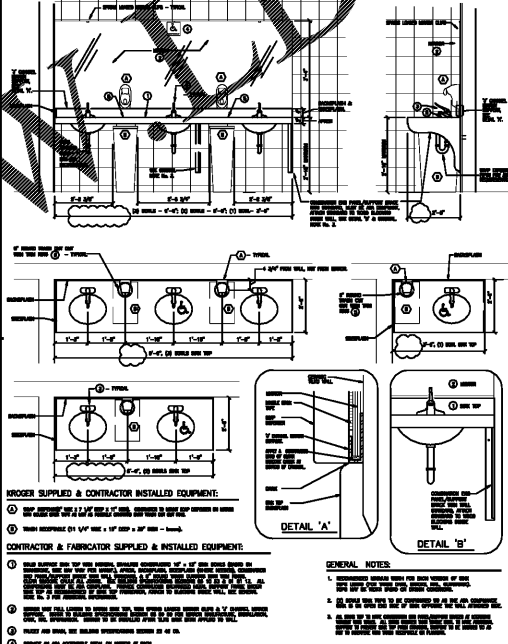
FLOOR SINK WITH DEBRIS BUCKET
DATE: 3/13/12
SCALE: NONE
DRAWN: ZAW
MASTER SPECIFICATION DETAIL
PSD-16B



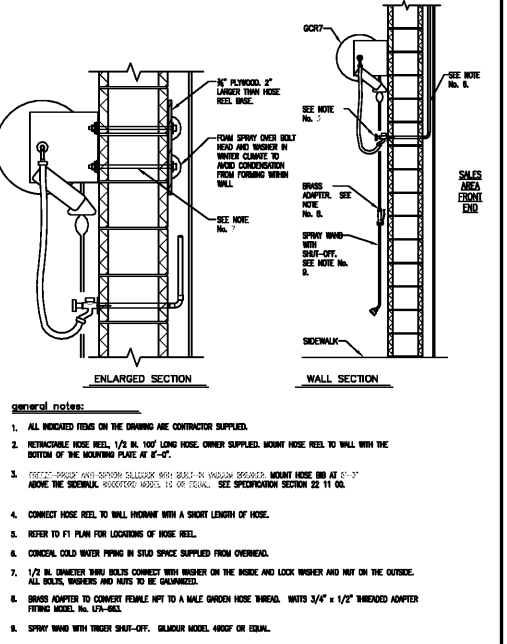
HOSE BIB LOCATION AT REFRIGERATED CASE
DATE: 3/8/17
SCALE: NONE
DRAWN: ZAW
MASTER SPECIFICATION DETAIL
PSD-21



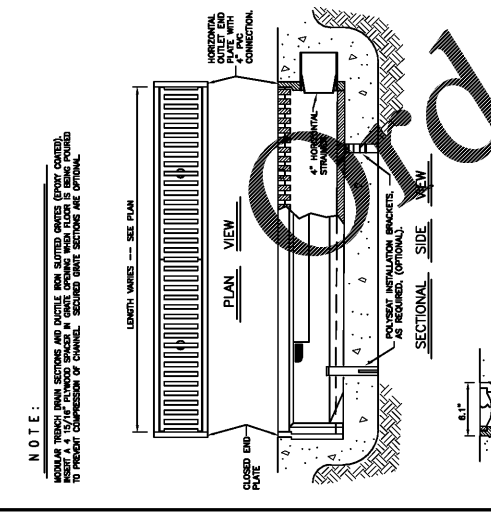
WATER SUPPLY LINES FOR ALTO SHAAM COMBI OVEN
DATE: 1/29/18
SCALE: NONE
DRAWN: TMW/ZAW
MASTER SPECIFICATION DETAIL
PSD-23



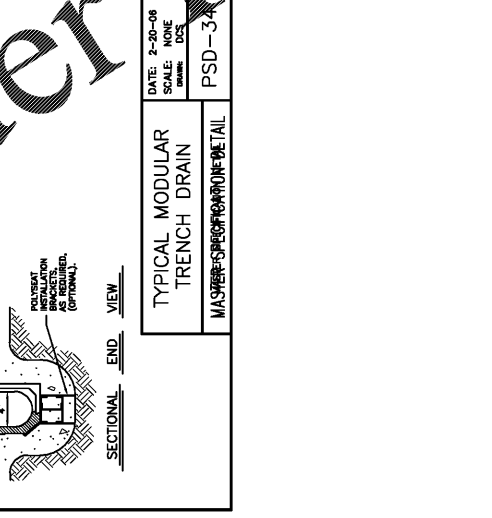
SOLID SURFACE TOPS WITH SINKS
DATE: 1/31/17
SCALE: NONE
DRAWN: ZAW
MASTER SPECIFICATION DETAIL
PSD-50



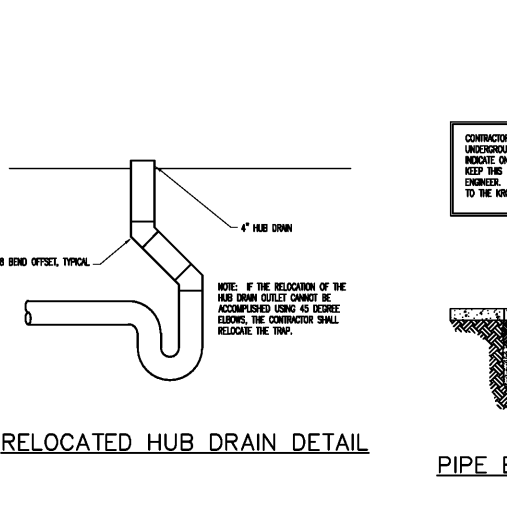
OUTDOOR FLORAL HOSE REEL
DATE: 5/11/15
SCALE: NONE
DRAWN: TMW/ZAW
MASTER SPECIFICATION DETAIL
PSD-107



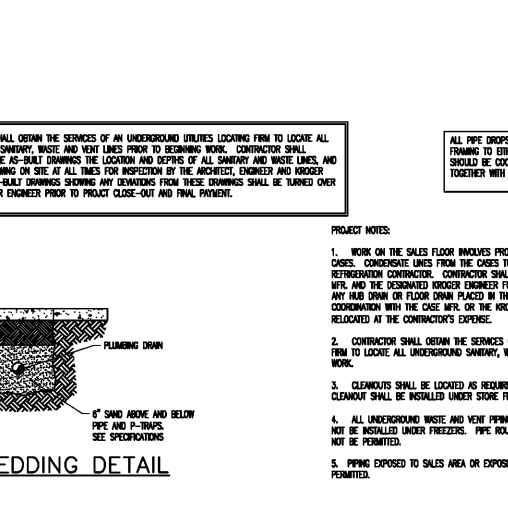
TYPICAL MODULAR TRENCH DRAIN
DATE: 2-20-08
SCALE: NONE
DRAWN: DCS
PSD-34



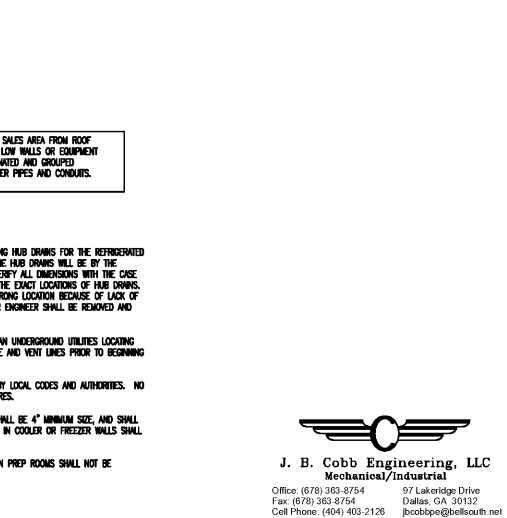
RELOCATED HUB DRAIN DETAIL



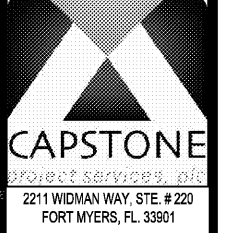
PIPE BEDDING DETAIL



RELOCATED HUB DRAIN DETAIL



RELOCATED HUB DRAIN DETAIL



CAPSTONE PROJECT SERVICES, PLC
ARCHITECTURAL & CONSTRUCTION SERVICES
OFFICE LOCATIONS: ROANOKE, VA & FT. MYERS, FL.

A REMODEL FOR:
KROGER GA-214
3139 US HWY 278, N.E.
COVINGTON, GA

PROJECT NO: 04-01-2019
CONSTRUCTION SET
PLUMBING DETAILS
REVISIONS
PROJECT NO: 04-01-2019
CWO DWG FILE:
DRAWN BY:
CWO BY:
P5.1

J. B. Cobb Engineering, LLC
Mechanical/Industrial
Office: (678) 363-8754
Fax: (678) 363-8754
Cell Phone: (404) 403-2126
97 Lakewood Drive
Duluth, GA 30132
jbcobb@jbcobb.com