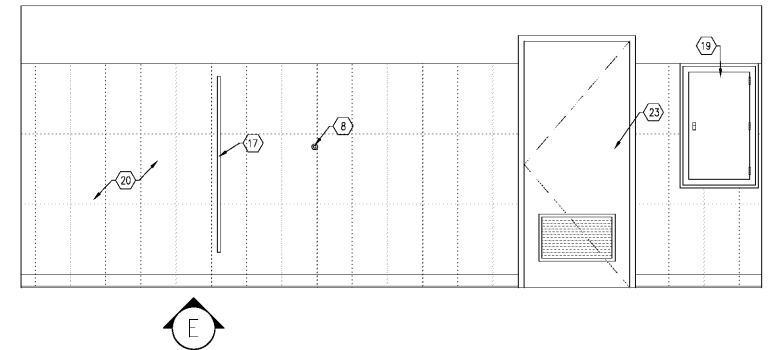
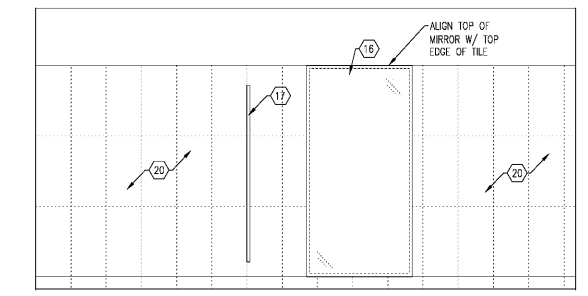


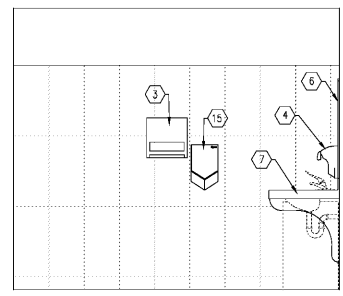
A



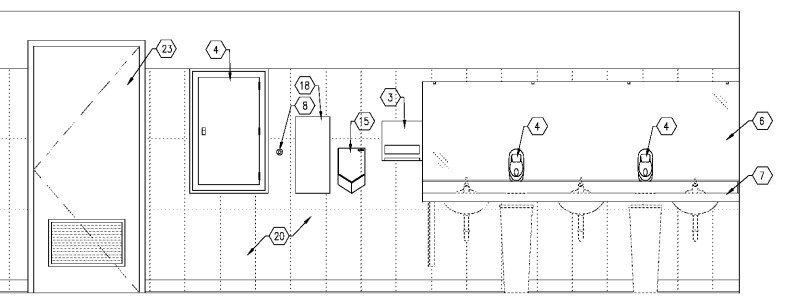
E



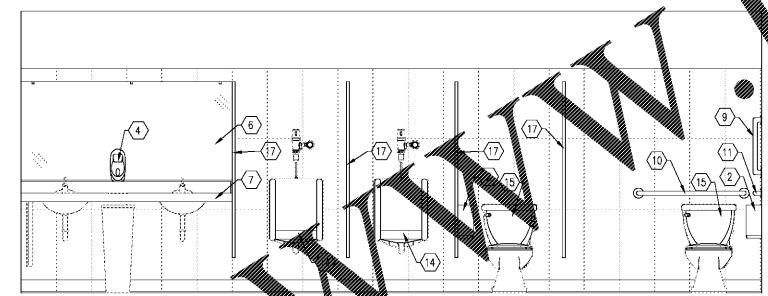
B



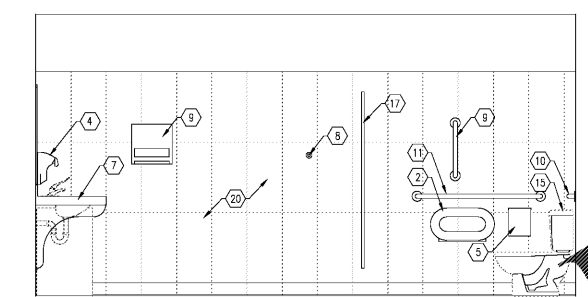
F



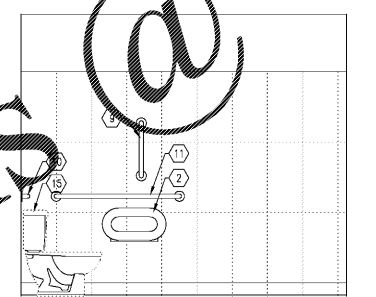
C



G



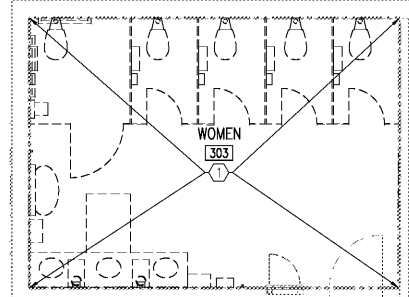
D



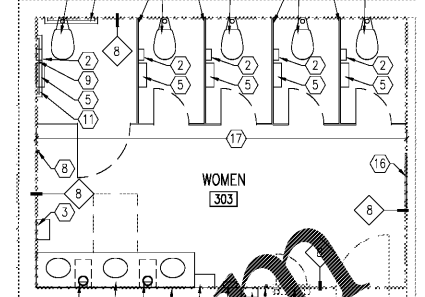
H

6B WOMEN'S RESTROOM ELEVATIONS SCALE: 1/2" = 1'-0"

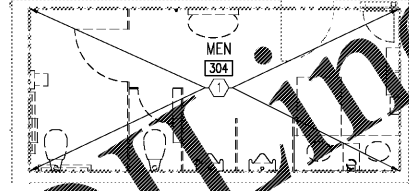
4B MEN'S RESTROOM ELEVATIONS SCALE: 1/2" = 1'-0"



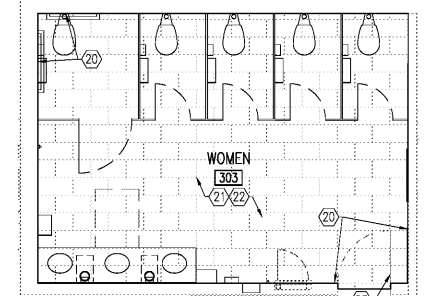
ENLARGED REMEDIATION PLAN SCALE: 1/4" = 1'-0"



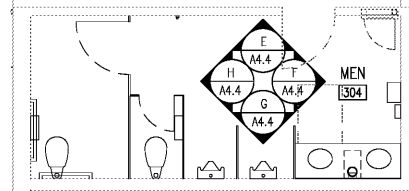
1D ENLARGED NEW WORK PLAN SCALE: 1/4" = 1'-0"



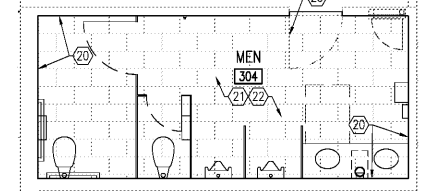
2B ENLARGED ELEVATION KEY PLAN SCALE: 1/4" = 1'-0"



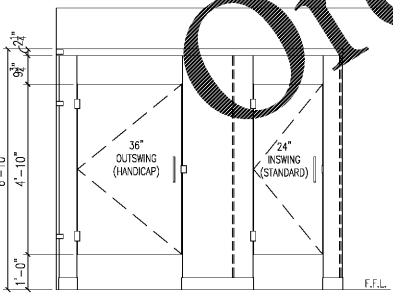
1B ENLARGED EXISTING ROOM FINISHES PLAN SCALE: 1/4" = 1'-0"



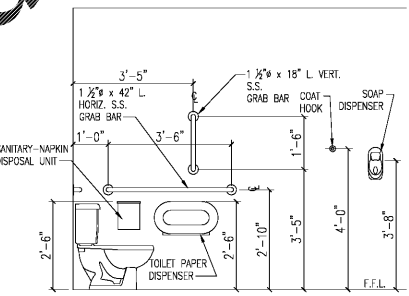
2B ENLARGED ELEVATION KEY PLAN SCALE: 1/4" = 1'-0"



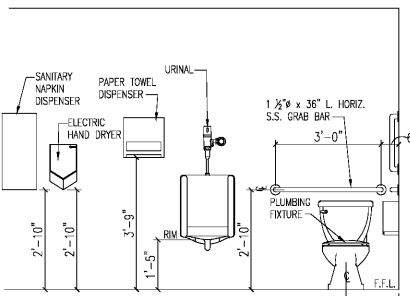
1B ENLARGED EXISTING ROOM FINISHES PLAN SCALE: 1/4" = 1'-0"



6A RESTROOM GUIDELINES - TYPICAL TOILET PARTITIONS SCALE: 1/2" = 1'-0"



5A RESTROOM GUIDELINES SCALE: 1/2" = 1'-0"



4A RESTROOM GUIDELINES SCALE: 1/2" = 1'-0"

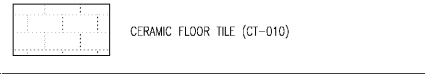
GENERAL NOTES

- SEE SPECIFICATION SECTIONS 016127.06 & 016125 FOR MORE INTERIOR FINISH/DECOR INFORMATION.
- ALL NEW WORK TO BE FURNISHED & INSTALLED BY G.C. UNLESS NOTED OTHERWISE.
- ALL NEW TOILET PARTITIONS ARE TO MATCH EXISTING SIZE/LAYOUT/LOCATION OF EXISTING.
- SEE SHEET A3.1 FOR PARTITION DETAILS.
- SEE AS. SHEET SERIES FOR ASD & CID DETAILS.
- REMOVE EXISTING SHEATHING AND FURNISH/INSTALL NEW SHEATHING (INDICATED AS $\sim\sim\sim$) ON EXISTING WALL STUDS PER DETAIL INDICATED. INTENT IS TO PROVIDE NEW SHEATHING FOR NEW WALL TILE & PAINTING FINISHES.
- REMOVE EXISTING SLAB AS/WHERE REQUIRED FOR NEW UNDER-SLAB PLUMBING WORK. REPLACE SLAB PER ASD-69. SEE PLUMB'G DRAWINGS.
- ABBREVIATIONS: F.C.(FURNISHED BY CONTRACTOR, I.C.(INSTALLED BY CONTRACTOR, F.O.(FURNISHED BY OWNER), I.O.(INSTALLED BY OWNER).
- THE FOLLOWING AREAS OF WORK ARE TO BE PRICED AS ALTERNATES:
 - ALTERNATE #3 - REAR RESTROOMS.
- INSTALL SOLID FRT WOOD BLOCKING IN ALL WALL LOCATIONS WHERE WALL MOUNTED FIXTURES, EQUIPMENT AND/OR ACCESSORIES ARE TO BE LOCATED. INCLUDING BUT NOT EXCLUSIVE TO: URINAL, BABY CHANGING STATION, GRAB BARS, COUNTERS, DISPENSERS

PLAN NOTES

- REMOVE & DISPOSE OF EXISTING RESTROOM INTERIOR SHEATHING W/ WALL TILE FINISH, FLOOR TILE FINISH, SINKS, PARTITIONS, DISPENSERS AND MIRRORS. EXISTING CEILING, WALL STUDS, FLOOR SLAB AND CLEANING CABINET TO REMAIN.
- NEW TOILET PAPER DISPENSER, SEE SPEC. SECT. 102813 (F.O./I.C.).
- NEW PAPER TOWEL DISPENSER, SEE SPEC. SECT. 102813 (F.O./I.C.).
- NEW SOAP DISPENSER, SEE SPEC. SECT. 102813 (F.O./I.C.).
- NEW SANITARY-NAPKIN DISPOSAL UNIT, SEE SPEC. SECT. 102813 (F.O./I.C.).
- NEW MIRROR - FULL WIDTH OF COUNTER x 36" H, SEE SPEC. SECT. 088000 & PSD-50 (F.C./I.C.).
- NEW SOLID SURFACE COUNTER TOP W/ INTEGRAL BOWL(S) - SEE SPEC. SECT. 081053 & PSD-50 (F.C./I.C.).
- NEW COAT HOOK. SEE SPEC. SECT. 102813. (F.O./I.C.).
- 1 1/2"x18" L. VERT. S.S. GRAB BAR. SEE SPEC. SECT. 102813. (F.O./I.C.).
- 1 1/2"x36" L. HORIZ. S.S. GRAB BAR. SEE SPEC. SECT. 102813. (F.O./I.C.).
- 1 1/2"x42" L. HORIZ. S.S. GRAB BAR. SEE SPEC. SECT. 102813. (F.O./I.C.).
- NEW WATER CLOSET (ACCESSIBLE) PLUMBING FIXTURE. (F.C./I.C.)
- NEW WATER CLOSET PLUMBING FIXTURE. (F.C./I.C.), SEE PLUMBING DRAWINGS.
- NEW URINAL PLUMBING FIXTURE. (F.C./I.C.), SEE PLUMBING DRAWINGS.
- NEW ELECTRIC HAND DRYER (F.C./I.C.). SEE ELECTRICAL DRAWINGS.
- NEW MIRROR - 36" W. x 72" H., SEE SPEC. SECT. 088000 (F.C./I.C.).
- NEW TOILET PARTITIONS, W/ONE COAT HOOK PER DOOR ON TOILET SIDE, & URINAL SCREENS, SEE SPEC. SECT. 102113 (F.O./I.C.).
- NEW SANITARY NAPKIN DISPENSER. SEE SPEC. SECT. 102813. (F.O./I.C.).
- EXISTING CLEANING CABINET TO REMAIN.
- NEW CERAMIC WALL TILE (CI-011) W/ PAINT (PI-010) ABOVE PER GD-1/A3.1 & SPEC. SECT. 093000 (F.C./I.C.).
- NEW CERAMIC FLOOR TILE (CI-010) PER GD-1/A3.1 & SPEC. SECT. 093000 (F.C./I.C.). FURNISH & INSTALL NEW WATERPROOF MEMBRANE AT INTERSECTIONS OF FLOOR, COVE BASE AND WALL PER ASD-164.
- RE-PAINT (PI-010) EXISTING CEILING.
- RE-PAINT (PI-010) EXISTING H.M. DOOR & FRAME ON RESTROOM SIDE.
- INSTALL NEW EXHAUST AIR FAN PER ASD-88 ON NEW CURB (F.C./I.C.) ON ROOF ABOVE. SEE MECHANICAL PLAN.

LEGEND



CAPSTONE
Project Services, LLC
2211 WIDMAN WAY, STE. # 220
FORT MYERS, FL. 33901

STATE OF GEORGIA
JOSHUA HUGHES
REGISTERED ARCHITECT
4-3-2019

CAPSTONE
PROJECT SERVICES, PLC
ARCHITECTURAL & CONSTRUCTION SERVICES
OFFICE LOCATIONS: RANOKO, VA & FT. MYERS, FL.

A REMODEL FOR:
KROGER GA-214
3199 US HWY 278, N.E. COVINGTON, GA

PROJECT: KROGER ATLANTA
04-01-2019
DATE: CONSTRUCTION SET

ENLARGED PLANS AND INTERIOR ELEVATIONS

PROJECT NO: CP2008-074
CAD DWG FILE: CP2008-074-A43
DRAWN BY: MFL
CHKD BY: JMH

A4.4