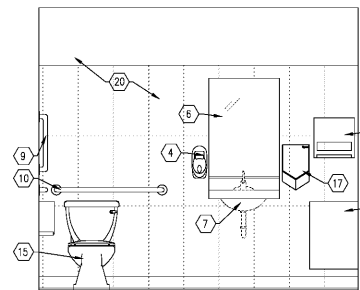
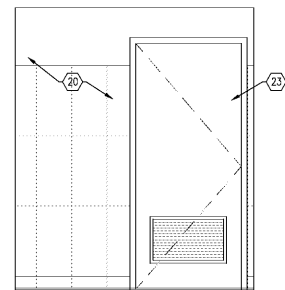


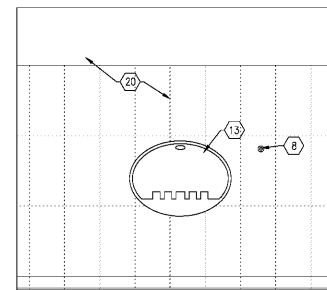
A



B

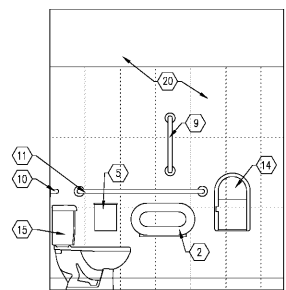


C

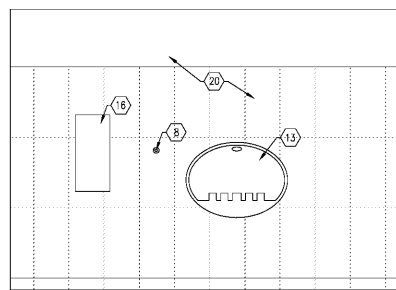


D

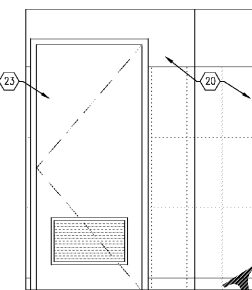
5D MEN'S RESTROOM ELEVATIONS SCALE: 1/2" = 1'-0"



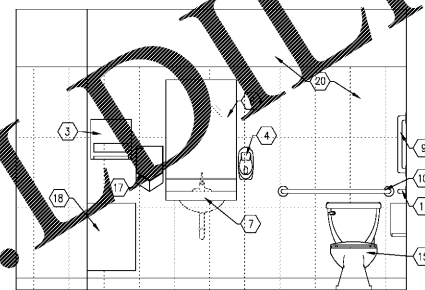
E



F

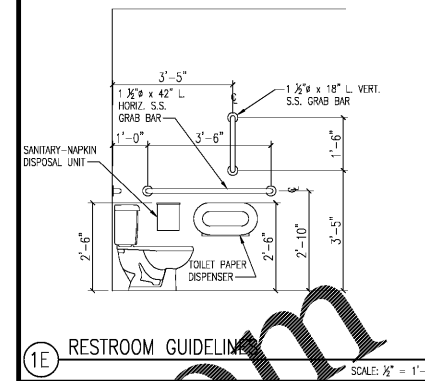


G

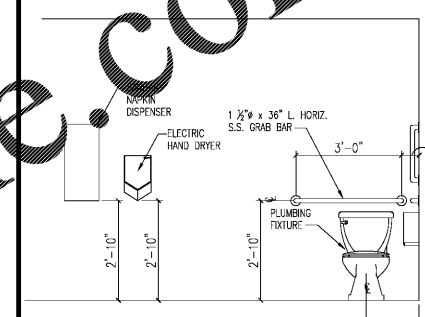


H

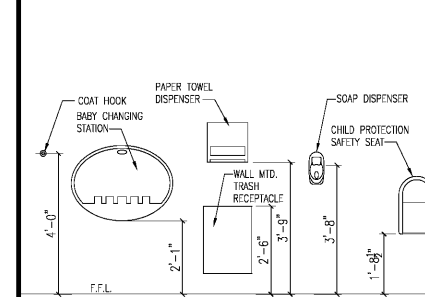
5C WOMEN'S RESTROOM ELEVATIONS SCALE: 1/2" = 1'-0"



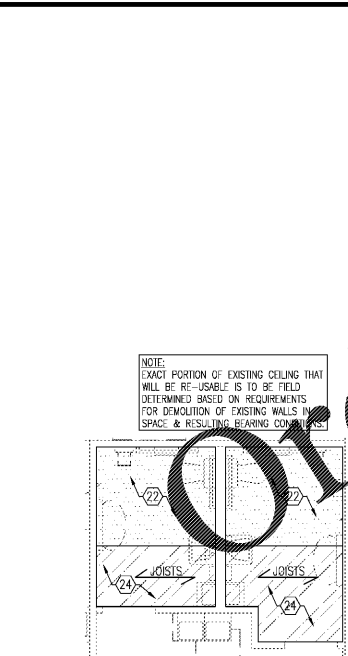
1E RESTROOM GUIDELINES SCALE: 1/2" = 1'-0"



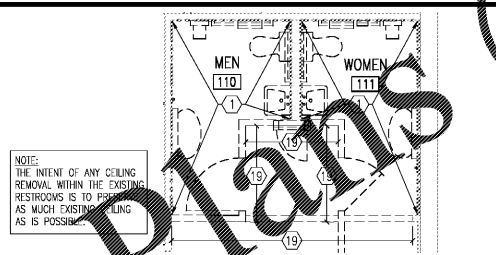
1D RESTROOM GUIDELINES SCALE: 1/2" = 1'-0"



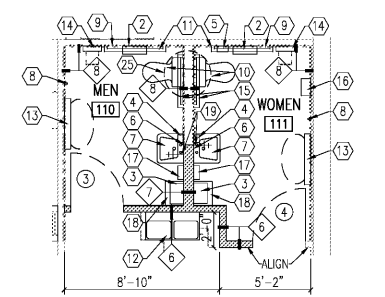
1C RESTROOM GUIDELINES SCALE: 1/2" = 1'-0"



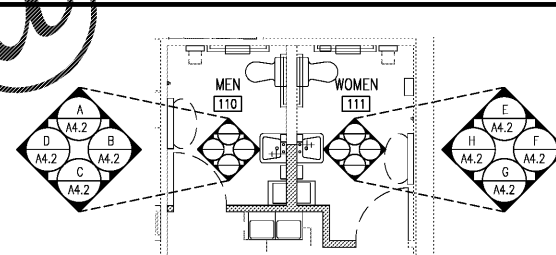
6A ENLARGED NEW CEILING PLAN SCALE: 1/4" = 1'-0"



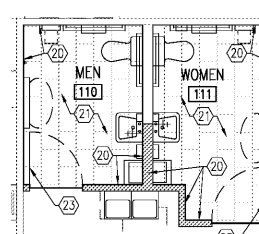
5B ENLARGED DEMOLITION PLAN SCALE: 1/4" = 1'-0"



5A ENLARGED NEW WORK PLAN SCALE: 1/4" = 1'-0"



4B ENLARGED ELEVATION KEY PLAN SCALE: 1/4" = 1'-0"



4A ENLARGED ROOM FINISHES PLAN SCALE: 1/4" = 1'-0"

- PLAN NOTES**
- REMOVE & DISPOSE OF EXISTING RESTROOM INTERIOR SHEATHING/W/ WALL TILE FINISH, FLOOR TILE FINISH, CEILING SHEATHING/JOISTS, SINKS, PARTITIONS, DISPENSERS, ACCESSORIES AND MIRRORS. CEILING, WALL STUDS, FLOOR SLAB AND CLEANING CABINET TO REMAIN.
 - NEW TOILET PAPER DISPENSER, SEE SPEC. SECT. 102813 (F.O./I.C.).
 - NEW PAPER TOWEL DISPENSER, SEE SPEC. SECT. 102813 (F.O./I.C.).
 - NEW SOAP DISPENSER, SEE SPEC. SECT. 102813 (F.O./I.C.).
 - NEW SANITARY-NAPKIN DISPOSAL UNIT, SEE SPEC. SECT. 102813 (F.O./I.C.).
 - NEW MIRROR - 24" x 36" H, SEE SPEC. SECT. 088000 & PSD-50 (F.C./I.C.).
 - NEW LAVATORY (ACCESSIBLE) PLUMBING FIXTURE. (F.C./I.C.). SEE PLUMBING DRAWINGS.
 - NEW COAT HOOK. SEE SPEC. SECT. 102813. SEE SPEC. SECT. 102813.(F.O./I.C.).
 - 1 1/2"x18" L. VERT. S.S. GRAB BAR. SEE SPEC. SECT. 102813. (F.O./I.C.).
 - 1 1/2"x36" L. HORIZ. S.S. GRAB BAR. SEE SPEC. SECT. 102813. (F.O./I.C.).
 - 1 1/2"x42" L. HORIZ. S.S. GRAB BAR. SEE SPEC. SECT. 102813. (F.O./I.C.).
 - NEW HI-LOW DUAL DRINKING FOUNTAIN W/ CANE GUARD ON EXPOSED SIDE(S) (F.C./I.C.). SEE PLUMBING/ELECTRICAL.
 - NEW BABY CHANGING STATION. SEE SPEC. SECT. 102813. (F.O./I.C.).
 - NEW CHILD PROTECT. SAFETY SEAT. SEE SPEC. SECT. 102813. (F.O./I.C.).
 - NEW WATER CLOSET (ACCESSIBLE) PLUMBING FIXTURE. (F.C./I.C.). SEE PLUMBING DRAWINGS.
 - NEW SANITARY NAPKIN DISPENSER. (F.C./I.C.).
 - NEW ELECTRIC HAND DRYER. SEE SPEC. SECT. 102813. (F.C./I.C.). SEE ELECTRICAL DRAWINGS.
 - NEW WALL MID. TRASH RECEPTACLE (F.C./I.C.). SEE SPEC. SECT. 102813.
 - REMOVE SECTION OF WALL COMPLETE INCLUDING ANY ASSOCIATED BULKHEADS, DOORS/FRAMES, CLEANING CABINET, UTILITIES, ETC..L
 - NEW CERAMIC WALL TILE (CT-011) W/ PAINT (PI-010) ABOVE PER CID-1/A3.1 & SPEC. SECT. 093000 (F.C./I.C.).
 - NEW CERAMIC FLOOR TILE (CI-010) PER CID-1/A3.1 & SPEC. SECT. 093000 (F.C./I.C.). FURNISH & INSTALL NEW WATERPROOF MEMBRANE AT INTERSECTIONS OF FLOOR, COVE BASE AND WALL PER ASD-164.
 - RE-PAINT (PI-010) NEW/EXISTING CEILING SHEATHING.
 - PAINT (PI-010) H.M. DOOR/FRAME ON RESTROOM SIDE. PAINT DOOR/FRAME ON SALES FLOOR SIDE PER DECOR DRAWINGS.
 - FURNISH & INSTALL NEW 1/2" M.R. GYP. BD. SHEATHING (PAINTED) @ 8'-0" A.F.F. ON METAL CEILING JOISTS (6" 18 GA. (600-5162-43)) W/ 3" UN-FACED SOUND ATTENUATION BLANKET. ALL CEILING JOISTS SHALL HAVE A MIN. OF ONE LINE OF BRIDGINS AT MID-SPAN. SEE PLAN FOR JOIST DIRECTION. COORDINATE JOIST LOCATIONS WITH LIGHTING PLAN & PROVIDE BLOCKING WHERE REQUIRED AROUND LIGHTING LOCATIONS IN BOTH NEW CEILING AREA AND WHERE/IF REQUIRED IN EXISTING PORTION OF CEILING.
 - INSTALL NEW EXHAUST AIR FAN PER ASD-BB ON NEW CURB (F.C./I.C.) ON ROOF ABOVE. SEE MECHANICAL PLAN.

- GENERAL NOTES**
- SEE SPECIFICATION SECTIONS 016127.06 & 016125 FOR MORE INTERIOR FINISH/DECOR INFORMATION.
 - ALL NEW WORK TO BE FURNISHED & INSTALLED BY G.C. UNLESS NOTED OTHERWISE.
 - SEE SHEET A3.1 FOR PARTITION DETAILS.
 - SEE SHEET A3.1 FOR DOOR DETAILS.
 - SEE AS. SHEET SERIES FOR ASD & GID DETAILS.
 - REMOVE EXISTING SHEATHING AND FURNISH/INSTALL NEW SHEATHING (INDICATED AS ON EXISTING WALL STUDS PER DETAIL INDICATED. INTENT IS TO PROVIDE NEW SHEATHING FOR NEW WALL TILE & PAINTING FINISHES.
 - FURNISH & INSTALL MATERIALS (FINISHES OVER SHEATHING ON MTL STUDS) AS REQUIRED TO PROVIDE A NEW END WALL AND DOOR JAMB CONDITION FROM F.F. UP TO BOTTOM OF EXISTING BULKHEAD. FINISHES AND GYP. BD. SHEATHING MATERIALS TO MATCH EXISTING ADJACENT ON SALES FLOOR SIDE. FINISHES AND SHEATHING ON RESTROOM SIDE PER PARTITION DETAIL 4/A3.1. METAL STUDS SIZED AS REQUIRED. PROVIDE 6" MTL. STUD BOX HEADERS OVER DOORS.
 - REMOVE EXISTING SLAB AS/WHERE REQUIRED FOR NEW UNDER-SLAB PLUMBING WORK. REPLACE SLAB PER ASD-69. SEE PLUMBING DRAWINGS.
 - ABBREVIATIONS: F.C.(FURNISHED BY CONTRACTOR), I.C.(INSTALLED BY CONTRACTOR), F.O.(FURNISHED BY OWNER), I.O.(INSTALLED BY OWNER).
 - THE FOLLOWING AREAS OF WORK ARE TO BE PRICED AS ALTERNATES: 10.1. ALTERNATE #2 - ALL WORK IN FRONT RESTROOMS.
 - INSTALL SOLID FRT WOOD BLOCKING IN ALL WALL LOCATIONS WHERE WALL MOUNTED FIXTURES, EQUIPMENT AND/OR ACCESSORIES ARE TO BE LOCATED. INCLUDING BUT NOT EXCLUSIVE TO: URINAL BABY CHANGING STATION GRAB BARS DISPENSERS COUNTERS
- LEGEND**
- CERAMIC FLOOR TILE (CI-010)
 - EXISTING CEILING
 - NEW CEILING (1/2" M.R. GYP. BD. ON MTL. JOISTS)

CAPSTONE
Project Services, LLC
2211 WIDMAN WAY, STE. # 220
FORT MYERS, FL. 33901

STATE OF GEORGIA
JOHN MARK (2009-ES)
REGISTERED ARCHITECT
4-3-2019

CAPSTONE
PROJECT SERVICES, PLC
ARCHITECTURAL & CONSTRUCTION SERVICES
OFFICE LOCATIONS: RANOKO, VA & FT. MYERS, FL

A REMODEL FOR:
KROGER GA-214
3199 US HWY 278, N.E. COVINGTON, GA

PROJECT: KROGER ATLANTA
04-01-2019
DATE: CONSTRUCTION SET

ENLARGED PLANS AND INTERIOR ELEVATIONS

REVISIONS	DATE	DESCRIPTION

PROJECT NO: CP2019-074
CAD DWG FILE: CP2019-074-A42
DRAWN BY: MFL
CHKD BY: JAH

A4.3
SHEET NO