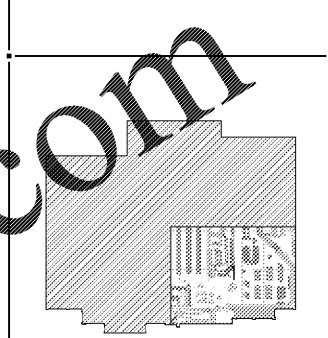
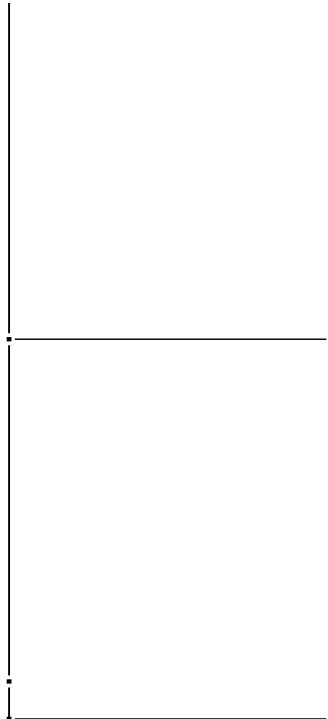


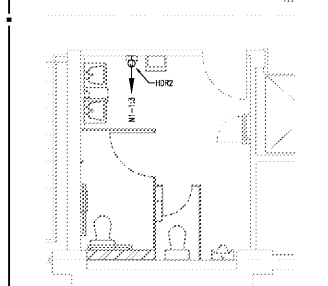
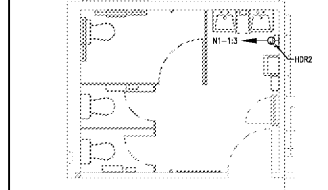
NOTE:
 COORDINATE WITH EQUIPMENT SCHEDULE, KROGER P.M. & EQUIPMENT PROFORM FOR SPECIAL BREAKER & CONNECTION TYPES PRIOR TO BID & ROUGH-IN.
 ALL 125V, SINGLE PHASE 15 AMP AND 20 AMP RATED RECEPTACLES INSTALLED IN THE LOCATIONS SPECIFIED IN SCHEDULE 210-8 (S(1)) - (8) SHALL HAVE GROUND FAULT CIRCUIT INTERRUPTER PROTECTION.
 NOTE THAT THE ISOLATED GROUNDING TYPE RECEPTACLES AND CLOCK TYPE RECEPTACLES LOCATED IN THE KITCHEN/SERVING AREA SHALL BE PROTECTED BY GROUND FAULT TYPE CIRCUIT BREAKERS RATHER THAN GROUND FAULT TYPE RECEPTACLES. GFCI BREAKERS REQUIRE A DEDICATED NEUTRAL (NOT SHARED) TO OPERATE PROPERLY.
 EC SHALL VERIFY IN FIELD ALL EQUIPMENT CONNECTIONS AND REQUIREMENTS PRIOR TO ROUGH-IN AND INSTALLATION OF DEVICES. VERIFY ALL DEVICE LOCATIONS AND MOUNTING HEIGHTS WITH KROGER P.M. EC SHALL MAKE ADJUSTMENTS IN FIELD TO MATCH ACTUAL EQUIPMENT BEING INSTALLED, AS DIRECTED BY THE EQUIPMENT INSTALLER.
 CONTRACTOR IS REQUIRED TO INSTALL STANDARD RECEPTACLES FOR CIRCUITS DEDICATED TO SPECIFIC EQUIPMENT, SUBJECT TO THE APPROVAL OF CODE ENFORCING AGENCY.
 REFER TO SHEET E4.1 FOR GENERAL AND KEYED NOTES.



KEY PLAN



NEW PREDRILL PUSHPED
 (CONVERT FROM GREEN RACK TO S-RECK)



INTERPLAN
 ARCHITECTURE
 INTERIOR DESIGN
 PROJECT MANAGEMENT
 404 COURTLAND STREET
 SUITE 100
 ORLANDO, FLORIDA 32804
 PH 407.645.3038
 FX 407.629.9124

THIS DOCUMENT IS NOT FOR REGULATORY APPROVAL, PERMITTING, OR CONSTRUCTION.

A WITHIN THE WALLS REMODEL FOR:

KROGER STORE # 478 - MARIETTA - GA
 3162 JOHNSON FERRY RD.,
 MARIETTA, GA 30062



NO DATE REVISIONS
 REVISIONS
 PROJECT NO: 2019 0125
 DATE: 03.18.2019

E4.4
 ELECTRICAL PARTIAL POWER
 PLAN - 4 OF 4
 CHECKED: DS DRAWN: VLD