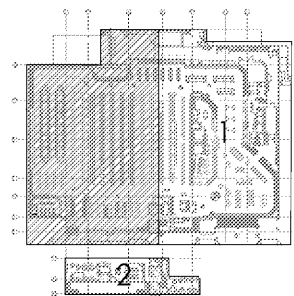


1 PARTIAL POWER DEMOLITION PLAN
1/8" = 1'-0"



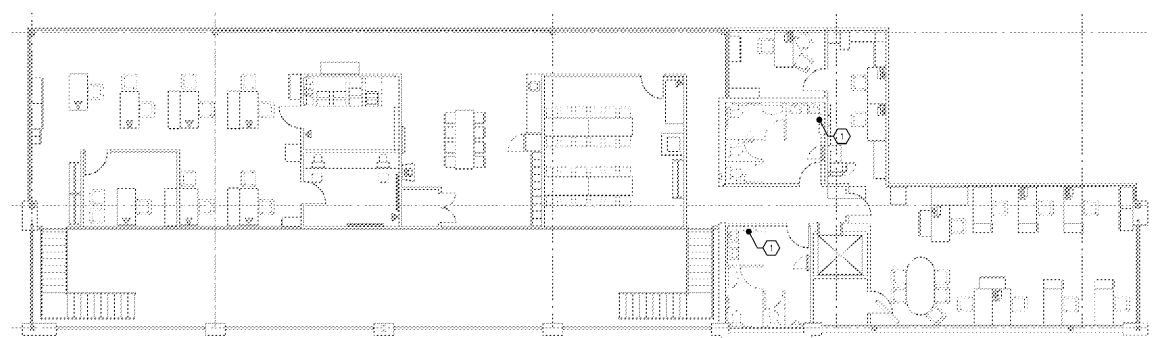
KEY PLAN

GENERAL NOTES

1. REFER TO SHEET ED1 FOR GENERAL NOTES AND SYMBOLS.
2. GO TO SAVE BRACKETS OF DEMO CASE.
3. WHERE DEMOLISHED REFRIGERATION PIPE AND ELECTRICAL IS EXPOSED CONCRETE FILL AND FINISH TO MATCH NEW CONCRETE.
4. WHERE DEMOLISHED REFRIGERATION PIPE AND ELECTRICAL IS LOCATED UNDER A CABINET, CAP OFF AS REQUIRED AT SLAB.
5. REMOVE ALL TRACK FOR LIGHTING NOT IN USE.
6. REMOVE AND REPLACE WALL PADS LOCATED IN FRONT COVERED ENTRYWAY.

KEYED NOTES

1. EQUIPMENT TO BE REMOVED. REMOVE ALL EQUIPMENT BACK TO PANEL OR NEAREST PANEL. KEEP QUALITY OF THE CIRCUIT. IF CIRCUIT IS USED IN ANOTHER PART OF THE CIRCUIT, SOME IN CORRESPONDING PANEL IF CIRCUIT IS USED.
2. EQUIPMENT TO BE RECONNECTED TO EXISTING CIRCUIT UNLESS NOTED OTHERWISE.
3. GO TO PANEL UNLESS RECONNECTED LIGHTING FOR NEW STAINLESS STEEL SHELVES. MAINTAIN CONNECTION TO EXISTING CIRCUIT.
4. PREPARE TO INSTALL NEW LED FIXTURE. MAINTAIN CONNECTION TO EXISTING CIRCUIT.



2 PARTIAL POWER DEMOLITION PLAN
1/8" = 1'-0"

INTERPLAN
ARCHITECTURE
ENGINEERING
INTERIOR DESIGN
PROJECT MANAGEMENT

604 COURTLAND STREET
SUITE 100
ORLANDO, FLORIDA 32804
PH: 407.645.5200
FX: 407.629.9124

THIS DOCUMENT IS NOT FOR REGULATORY APPROVAL, PERMITTING, OR CONSTRUCTION.

A WITHIN THE WALLS REMODEL FOR:
KROGER STORE # 478 - MARIETTA - GA
3162 JOHNSON FERRY RD.,
MARIETTA, GA 30062



NO DATE REVISIONS
REVISIONS
PROJECT NO: 2019-0125
DATE: 03/18/2019

ED1.2
POWER DEMOLITION PLAN

CHECKED: DS DRAWN: VLD

Order Plans @ www.LDILine.com