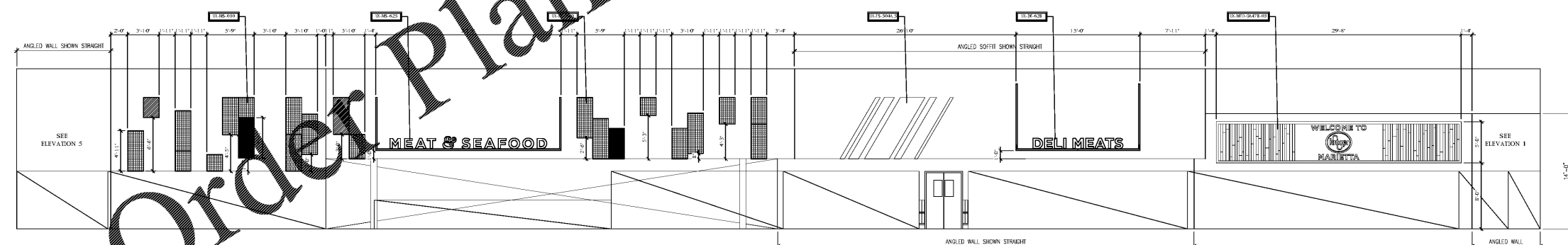
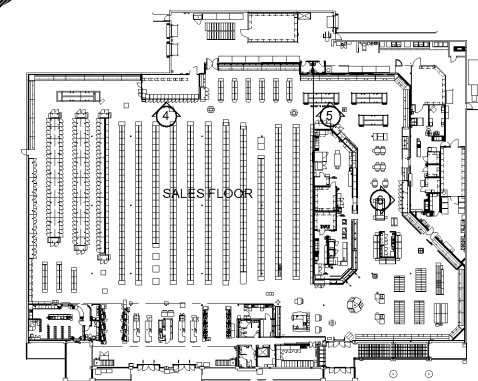
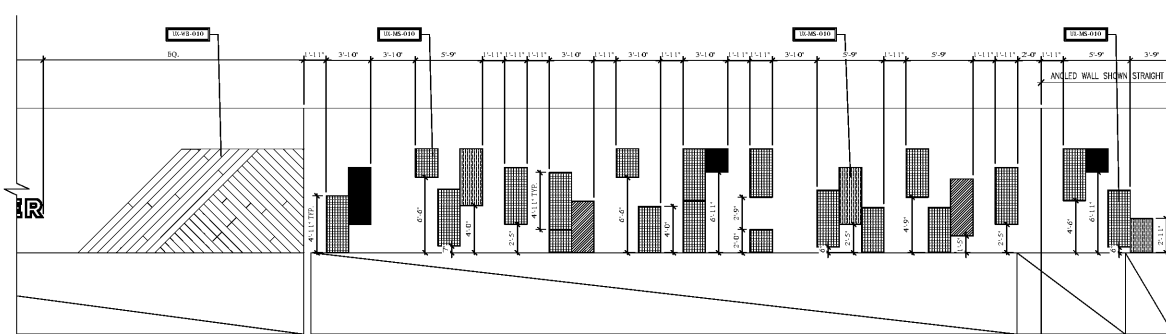


- DECOR FINISH NOTES:**
- VERIFY LOCAL HEALTH DEPARTMENT REQUIREMENTS REGARDING THE WALL, WALLS & FLOOR FINISHES (SUCH AS MANDOLINE, etc.)
 - ALL WALL FINISHES TO EXCEED A MINIMUM RHEUMATISM OF 0.05 AT TERMINATION POINTS, 0.10 CONTINUOUS.
 - WALLS AND CEILING SHALL BE FINISHED TO BE EASY TO CLEAN AND MAINTAIN. ALL WALLS TO BE FINISHED WITH A FINISH THAT CAN BE CLEANED WITH A MILD DETERGENT AND WATER. ALL WALLS SHALL BE FINISHED TO THE SATISFACTION OF THE CLIENT AND HEALTH DEPARTMENT.
 - GENERAL CONTRACTOR TO VERIFY FINISHES FOR ALL LOCAL HEALTH DEPARTMENT REQUIREMENTS.
 - CONTRACTOR TO VERIFY FINISHES FOR ALL LOCAL HEALTH DEPARTMENT REQUIREMENTS. CONTRACTOR TO VERIFY FINISHES FOR ALL LOCAL HEALTH DEPARTMENT REQUIREMENTS. CONTRACTOR TO VERIFY FINISHES FOR ALL LOCAL HEALTH DEPARTMENT REQUIREMENTS.
 - ALL FINISHES TO BE FINISHED TO THE SATISFACTION OF THE CLIENT AND HEALTH DEPARTMENT.
 - CONTRACTOR TO VERIFY FINISHES FOR ALL LOCAL HEALTH DEPARTMENT REQUIREMENTS. CONTRACTOR TO VERIFY FINISHES FOR ALL LOCAL HEALTH DEPARTMENT REQUIREMENTS.
 - CONTRACTOR TO VERIFY FINISHES FOR ALL LOCAL HEALTH DEPARTMENT REQUIREMENTS. CONTRACTOR TO VERIFY FINISHES FOR ALL LOCAL HEALTH DEPARTMENT REQUIREMENTS.
 - CONTRACTOR TO VERIFY FINISHES FOR ALL LOCAL HEALTH DEPARTMENT REQUIREMENTS. CONTRACTOR TO VERIFY FINISHES FOR ALL LOCAL HEALTH DEPARTMENT REQUIREMENTS.
 - CONTRACTOR TO VERIFY FINISHES FOR ALL LOCAL HEALTH DEPARTMENT REQUIREMENTS. CONTRACTOR TO VERIFY FINISHES FOR ALL LOCAL HEALTH DEPARTMENT REQUIREMENTS.
 - CONTRACTOR TO VERIFY FINISHES FOR ALL LOCAL HEALTH DEPARTMENT REQUIREMENTS. CONTRACTOR TO VERIFY FINISHES FOR ALL LOCAL HEALTH DEPARTMENT REQUIREMENTS.
 - CONTRACTOR TO VERIFY FINISHES FOR ALL LOCAL HEALTH DEPARTMENT REQUIREMENTS. CONTRACTOR TO VERIFY FINISHES FOR ALL LOCAL HEALTH DEPARTMENT REQUIREMENTS.
 - CONTRACTOR TO VERIFY FINISHES FOR ALL LOCAL HEALTH DEPARTMENT REQUIREMENTS. CONTRACTOR TO VERIFY FINISHES FOR ALL LOCAL HEALTH DEPARTMENT REQUIREMENTS.
 - CONTRACTOR TO VERIFY FINISHES FOR ALL LOCAL HEALTH DEPARTMENT REQUIREMENTS. CONTRACTOR TO VERIFY FINISHES FOR ALL LOCAL HEALTH DEPARTMENT REQUIREMENTS.
 - CONTRACTOR TO VERIFY FINISHES FOR ALL LOCAL HEALTH DEPARTMENT REQUIREMENTS. CONTRACTOR TO VERIFY FINISHES FOR ALL LOCAL HEALTH DEPARTMENT REQUIREMENTS.



- DECOR COLOR KEY - SEE COLOR ELEVATIONS
- 1.1 - 1/2" PAINT TO MATCH WALLS
 - 1.2 - 1/2" PAINT TO MATCH WALLS
 - 1.3 - 1/2" PAINT TO MATCH WALLS
 - 1.4 - 1/2" PAINT TO MATCH WALLS
 - 1.5 - 1/2" PAINT TO MATCH WALLS
 - 1.6 - 1/2" PAINT TO MATCH WALLS
 - 1.7 - 1/2" PAINT TO MATCH WALLS
 - 1.8 - 1/2" PAINT TO MATCH WALLS
 - 1.9 - 1/2" PAINT TO MATCH WALLS
 - 1.10 - 1/2" PAINT TO MATCH WALLS
 - 1.11 - 1/2" PAINT TO MATCH WALLS
 - 1.12 - 1/2" PAINT TO MATCH WALLS