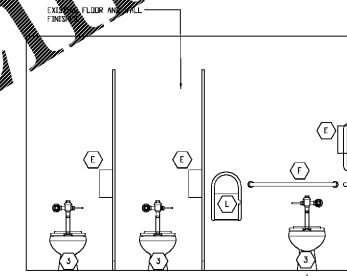
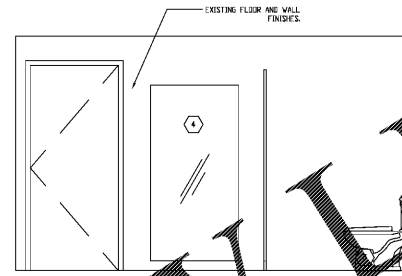
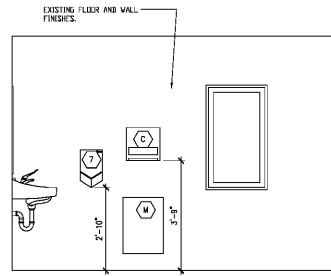
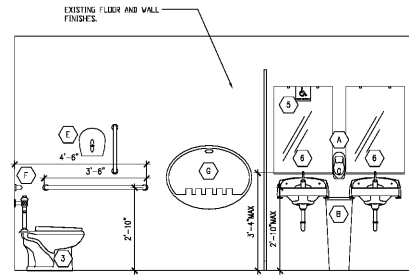
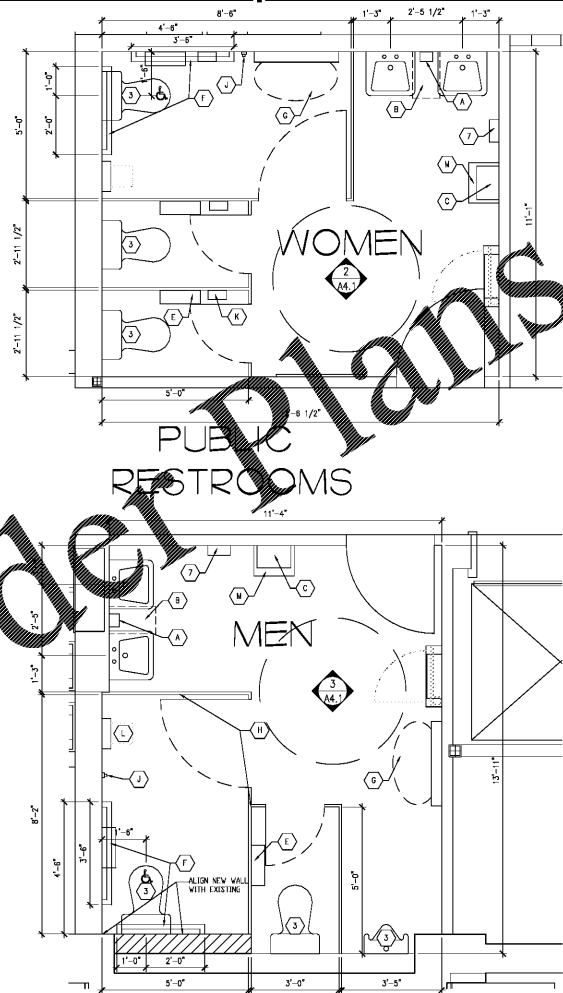


3 FRONT RESTROOM ELEVATIONS 1/2" = 1'-0"



2 FRONT RESTROOM ELEVATIONS 1/2" = 1'-0"



1 FRONT RESTROOM PLAN DETAIL 1/2" = 1'-0"

**RESTROOMS NOTES**

POWER CLEAN EXISTING FLOOR AND WALL TILES IN RESTROOM (S.C.) TO BE SHOWN TO PRESERVE CLEAN AND SEAL. COORDINATE WITH KROGER P.M. APPLY FRESH PAINT AT CEILING, DOORS, AND TRIMS. SEE SPECIFICATIONS.

**KROGER SUPPLIED & CONTRACTOR INSTALLED EQUIPMENT**

- (A) SOAP DISPENSER - SEE PSD-50.
- (B) TRASH RECEPTACLE.
- (C) PAPER TOWEL "BENSION" DISPENSER.
- (D) HARKINS DISPENSER, 11 3/4" WIDE x 6 1/2" DEEP x 26 1/8" HIGH - PHEI #060-0004951 - EPRD #K-000147. ... OPTIONALLY INSTALLED PER DIVISION.
- (E) AJIKO JR. BATHROOM TISSUE DISPENSER (SMOKE GRAY), 10.610" WIDE x 5.390" DEEP x 11.290" HIGH.
- (F) GRAB BAR - SUPPLIED WITH TOILET PARTITIONS.
- (G) DIAPER CHANGING STATION, 33.5" WIDE x 31.4" DEEP x 24.75" HIGH - PHEI #060-0005001 - EPRD #K-000140.
- (H) PARTITIONS FOR TOILET/STALL - PHEI #060-0004950 & #060-0009118 - EPRD #K-0006875 & #K-0007193.
- (I) COAT HOOKS ON EACH STALL DOOR PLUS ADDITIONAL HOOKS PER LOCATION(S) INDICATED ON PLANS. ... SUPPLIED WITH TOILET PARTITIONS. INSTALL HOOK 4'-0" ABOVE FLOOR, UNLESS NOTE OTHERWISE.
- (J) SANITARY HARKINS DISPOSAL RECEPTACLE, 7 1/2" WIDE x 3 7/8" DEEP x 10" HIGH - PHEI #060-0004952 - EPRD #K-0002180.
- (K) WALL MOUNTED CHILD PROTECTION SEAT - PHEI #060-0009308 - EPRD #K-0001404.
- (L) TRASH RECEPTACLE (WALL MOUNTED), 14 1/2" WIDE x 12 1/2" DEEP x 23" HIGH.

**CONTRACTOR SUPPLIED AND INSTALLED EQUIPMENT**

- (1) WALL MOUNTED SINK, FAUCETS, ETC. - SEE PSD-50 FOR COMPLETE INFORMATION.
- (2) MIRROR TO BE INSTALLED AFTER TILES HAVE BEEN APPLIED TO WALL - SEE PSD-50.
- (3) PLUMBING FIXTURES - TOILETS, URINALS, DRINKING FOUNTAINS.
- (4) 36" WIDE x 72" HIGH WALL MIRROR.
- (5) 72" ADA ACCESSIBLE DECAL OR MIRROR AT EACH ADA COMPLIANT SINK LOCATION.
- (6) MIRROR, SPRING LOADED MIRROR CLIPS & 7" CHANNEL MIRROR SUPPORT - SEE PSD-50.
- (7) ELECTRIC HAND DRYER DRYON AIRBLADE V - REFER TO SECTION 10 28 13 TOILET ACCESSORIES IN SPECIFICATIONS.

\* MIRRORS TO BE INSTALLED AFTER TILES HAVE BEEN APPLIED TO WALL.  
 \*\* REFERENCE PROJECT SPECIFICATIONS BOOK FOR MORE INFORMATION.

**GENERAL NOTES**

1. REFER TO SHEET A-0.0 FOR ACCESSIBILITY NOTES.
2. REFER TO DRAWING REF-A & REF-B.
3. REFER TO A1.1 AND A1.1.1 FOR ADDITIONAL WORK REQUIRED.

**INTERPLAN**  
 ARCHITECTURE  
 ENGINEERING  
 INTERIOR DESIGN  
 PROJECT MANAGEMENT

604 COURTLAND STREET  
 SUITE 100  
 ORLANDO, FLORIDA 32804  
 PH 407.645.3200  
 FX 407.629.9124

THIS DOCUMENT IS NOT FOR REGULATORY APPROVAL, PERMITTING, OR CONSTRUCTION.

A WITHIN THE WALLS REMODEL FOR:  
**KROGER STORE # 478 - MARIETTA - GA**  
 3162 JOHNSON FERRY RD.,  
 MARIETTA, GA 30062



NO DATE REVISIONS  
 REVISIONS  
 PROJECT NO: 2019 0125  
 DATE: 03.18.2019

**A4.1**  
 ENLARGED RR PLANS AND ELEVATIONS  
 CHECKED: CH DRAWN: MS

Order Plans @ [www.LDILine.com](http://www.LDILine.com)