

Scale 1" = 20'

IRRIGATION SCHEDULE

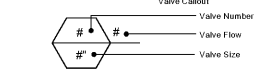
SYMBOL	MANUFACTURER/MODEL/DESCRIPTION	QTY	PSI
EST LCS RGS CST SST	Rain Bird 1806 15 Strip Series Turf Spray 6.0" Pop-Up Sprinkler with Co-Molded Wiper Seal. Side and Bottom Inlet. 1/2" NPT Female Threaded Inlet.	33	30
4V 6V 18V	Rain Bird 1806 AD Turf Spray 6.0" Pop-Up Sprinkler with Co-Molded Wiper Seal. Side and Bottom Inlet. 1/2" NPT Female Threaded Inlet.	23	30
3DHE-VAN 3DHE-VAN 3DHE-VAN	Rain Bird 1806 DJ Turf Spray 6.0" Pop-Up Sprinkler with Co-Molded Wiper Seal. Side and Bottom Inlet. 1/2" NPT Female Threaded Inlet.	37	30
11 11AZ 11B	Rain Bird 1806-1400 Flood 1401 Flood Bubbler 6.0" pop-up	40	30

SYMBOL	MANUFACTURER/MODEL/DESCRIPTION	QTY	PSI	GPM	RADIUS
21	Rain Bird 5006-PC, FC-R-LA Turf Rotor, 6.0" Pop-Up, Plastic Riser. Adjustable and Full Circle. Low Angle Nozzle. Pressure Regulating.	19	25	0.73	25'
22	Rain Bird 5006-PC, FC-R-LA Turf Rotor, 6.0" Pop-Up, Plastic Riser. Adjustable and Full Circle. Low Angle Nozzle. Pressure Regulating.	21	25	1.47	29'

SYMBOL	MANUFACTURER/MODEL/DESCRIPTION	QTY
1	Rain Bird LFV-075 3/4" Low Flow DV Valve	1
2	Rain Bird MDCFCAP Dripline Flush Valve cap in compression fitting coupler.	2
1	Rain Bird ARV050 1/2" Air Relief Valve, made of quality rust-proof materials, with a 6.0" drip valve box (SEB 7XB emitter box). Use with installation below soil. The valve will allow air to escape the pipeline, thus preventing water hammer or blockage.	1
1,152 s.f.	Area to Receive Dripline Rain Bird XFS-06-18 (18) XFS Sub-Surface Pressure Compensating Landscape Dripline w/Copper Shield Technology. 0.6GPH emitters at 18.0" O.C. Dripline laterals spaced at 18.0" apart, with emitters offset for triangular pattern. UV Resistant. Specify XF insert fittings.	

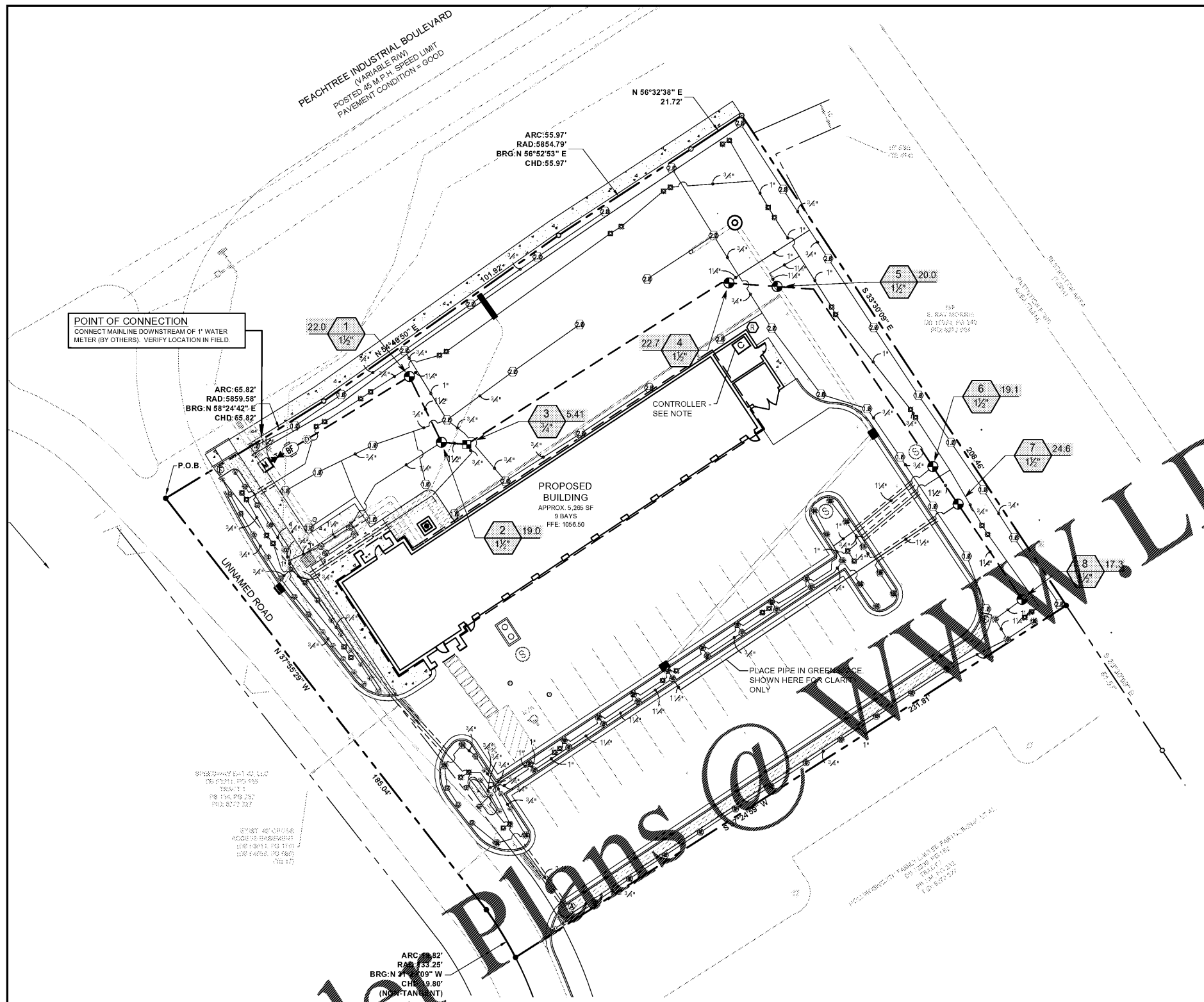
SYMBOL	MANUFACTURER/MODEL/DESCRIPTION	QTY
7	Rain Bird PEB 1"-1-1/2" Plastic Industrial Valves. Low Flow Operating Capability. Globe Configuration.	7
1	NIBCO Ball Valve Brass, Two-Piece, Full Port, NPT x NPT, T-PP-600A	1
1	Automatic Drain Valve Place at the lowest point along the mainline	1
1	Watts 707 1-1/2" Double Check Valve Backflow Preventer	1
1	Rain Bird ESP12LX Basic 12 Station Capable Commercial Controller. Mounted on a Plastic Wall Mount. Without flow sensor.	1
1	Rain Bird Wireless Rain/Freeze Sensor Sensor Combo (Model WR2-RFC)	1
1	Water Meter 1"	1

3,027 l.f.	Irrigation Lateral Line: PVC Class 200 SDR 21
367.3 l.f.	Irrigation Mainline: PVC Schedule 40 PVC Schedule 40 Irrigation pipe.
175.8 l.f.	Pipe Sleeve: PVC Schedule 40 Sleeves shall be twice the size of pipes passing thru them.



VALVE SCHEDULE

NUMBER	MODEL	SIZE	TYPE	GPM	PSI	PSI @ POC	PRECIP
1	Rain Bird PEB	1-1/2"	Turf Rotor	22.00	31.73	47.65	0.38 in/h
2	Rain Bird PEB	1-1/2"	Turf Spray	19.02	36.66	51.91	2.27 in/h
3	Rain Bird LFV-075	3/4"	Area for Dripline	5.41	35.75	48.39	0.45 in/h
4	Rain Bird PEB	1-1/2"	Turf Rotor	22.74	32.53	51.04	0.38 in/h
5	Rain Bird PEB	1-1/2"	Bubbler	20.00	38.88	56.12	2.01 in/h
6	Rain Bird PEB	1-1/2"	Turf Spray	19.11	36.40	54.27	1.69 in/h
7	Rain Bird PEB	1-1/2"	Turf Spray	24.56	39.00	60.77	2.19 in/h
8	Rain Bird PEB	1-1/2"	Turf Spray	17.25	38.08	55.98	1.50 in/h



POINT OF CONNECTION
 CONNECT MAINLINE DOWNSTREAM OF 1" WATER METER (BY OTHERS). VERIFY LOCATION IN FIELD.

CONTROLLER - SEE NOTE

PROPOSED BUILDING
 APPROX. 5,285 SF
 9 BAYS
 FFE: 106650

PLACE PIPE IN GREEN LINE SHOWN HERE FOR CLARITY ONLY

CONTROLLER NOTE

LOCATE CONTROLLER AT LOCATION SHOWN ON PLAN. VERIFY LOCATION IN FIELD WITH OWNER'S REPRESENTATIVE.
 120 VAC POWER TO CONTROLLER LOCATION IS NOT WITHIN THE IRRIGATION CONTRACTOR'S SCOPE OF WORK AND SHALL BE PROVIDED BY OTHERS.
 CONTRACTOR TO 120 VAC SHALL BE PERFORMED BY THE LANDSCAPE CONTRACTOR. IRRIGATION CONTRACTOR SHALL CORRELATE LOCATION OF WIRE SLEEVE PENETRATIONS THROUGH BUILDING WITH OWNER AND GENERAL CONTRACTOR. STATION RUN ORDER SHALL MATCH PLAN.

SLEEVE AND WIRING NOTES:

IN ADDITION TO PROVIDING SLEEVES FOR ALL PIPING UNDER ROADWAYS AND WALKWAYS, THE IRRIGATION CONTRACTOR SHALL PROVIDE AND INSTALL SOFT 40 PVC SLEEVES FOR ALL CONTROLLER WIRES OCCURRING UNDER ROADWAYS AND WALKWAYS. SLEEVES FOR CONTROLLER WIRES SHALL BE 2" DIA AND CONTAIN NO MORE THAN 25 WIRES.

IRRIGATION DISCLAIMER

THIS DESIGN IS DIAGRAMMATIC. ALL PIPING, VALVES, AND OTHER EQUIPMENT SHOWN WITHIN PAVED AREAS OR OUT OF PROPERTY BOUNDARIES ARE FOR DESIGN CLARIFICATION ONLY, AND SHALL BE INSTALLED IN PLANTING AREAS WITHIN THE PROPERTY LINES OR LIMITS INDICATED ON PLAN. THE IRRIGATION CONTRACTOR SHALL VERIFY THE LOCATIONS OF ALL ABOVE GRADE IRRIGATION EQUIPMENT WITH THE OWNER'S AUTHORIZED REPRESENTATIVE PRIOR TO INSTALLATION, OR IRRIGATION CONTRACTOR MAY BE REQUIRED TO MOVE SUCH ITEMS AT HIS OWN COST.

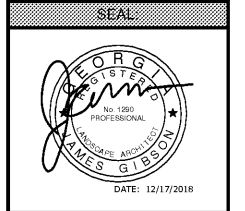
IRRIGATION CONTRACTOR IS RESPONSIBLE FOR VERIFYING ALL FINAL QUANTITIES PER DRAWINGS AND SPECIFICATIONS. ANY QUANTITIES PROVIDED ARE PROVIDED AS A CONVENIENCE TO THE CONTRACTOR ONLY AND SHALL NOT BE CONSIDERED ABSOLUTE.

CRITICAL ANALYSIS

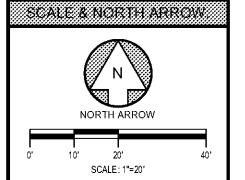
Generated:	2018-10-07 17:59	DESIGN ANALYSIS	
P.O.C. NUMBER: 01		Maximum Station Flow:	22.46 gpm
Water Source Information:		Flow Available at POC:	37.50 gpm
		Residual Flow Available:	15.04 gpm
FLOW AVAILABLE		Critical Station:	3
Water Meter Size:	1"	Design Pressure:	30.00 psi
Flow Available:	37.50 gpm	Friction Loss:	4.91 psi
		Fittings Loss:	0.49 psi
		Elevation Loss:	0.00 psi
PRESSURE AVAILABLE		Loss through Valve:	3.84 psi
Static Pressure at POC:	65.00 psi	Pressure Req. at Critical Station:	39.24 psi
Elevation Change:	0.00 ft	Loss for Fittings:	0.83 psi
Service Line Size:	1 1/2"	Loss for Main Line:	8.26 psi
Length of Service Line:	5.00 ft	Loss for POC to Valve Elevation:	0.00 psi
Pressure Available:	65.00 psi	Loss for Backflow:	12.23 psi
		Loss for Water Meter:	2.78 psi
		Critical Station Pressure at POC:	63.34 psi
		Pressure Available:	65.00 psi
		Residual Pressure Available:	1.66 psi

NOTE:
 THE CONTRACTOR IS SPECIFICALLY CAUTIONED THAT THE LOCATION AND/OR ELEVATION OF EXISTING UTILITIES AS SHOWN ON THESE PLANS IS BASED ON DESIGN DRAWINGS, RECORDS OF THE VARIOUS UTILITY COMPANIES, AND WHERE POSSIBLE, MEASUREMENTS TAKEN IN THE FIELD. CORE STATES, INC. DOES NOT GUARANTEE THAT LOCATIONS SHOWN ARE EXACT. THE CONTRACTOR MUST CONTACT THE APPROPRIATE UTILITY COMPANIES AT LEAST 72 HOURS BEFORE ANY EXCAVATION TO REQUEST EXACT FIELD LOCATIONS OF UTILITIES. AS SUCH, THE GENERAL CONTRACTOR SHALL BE RESPONSIBLE FOR LOCATING AND UNCOVERING EXISTING UTILITIES IN THE VICINITY OF THE PROPOSED IMPROVEMENTS AND UTILITY CONNECTION POINTS PRIOR TO THE START OF CONSTRUCTION TO ASCERTAIN EXACT MATERIALS, LOCATIONS, ELEVATIONS, ETC. AND THEIR POTENTIAL CONFLICT WITH PROPOSED IMPROVEMENTS. GC SHALL CONSULT WITH CONSTRUCTION MANAGER AND ENGINEER AS APPROPRIATE BEFORE PROCEEDING WITH WORK.

CLIENT: CHRISTIAN BROTHERS AUTOMOTIVE
 17725 KATY FREEWAY - SUITE 200 - HOUSTON, TX 77084
 PROJECT: CHRISTIAN BROTHERS AUTOMOTIVE - NORCROSS
 5650 PEACHTREE INDUSTRIAL BLVD
 LAND LOT 272, DISTRICT 6, PARCEL 6272.327
 NORCROSS, GWINNETT COUNTY, GA



DESIGN TEAM
 DRAWN BY: JWJ
 DESIGNED BY: JWJ
 REVIEWED BY: RM



JOB #: 180605
 DATE: 12/17/2018