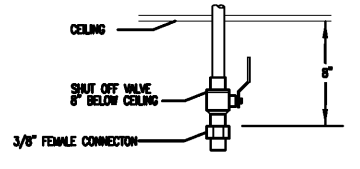
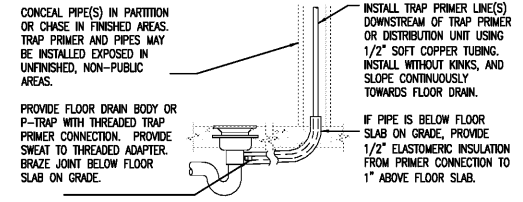


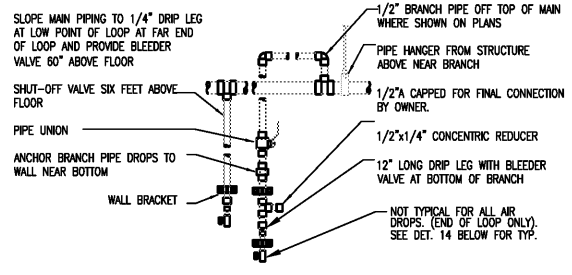
1 VENT THRU ROOF ("VTR") NOT TO SCALE



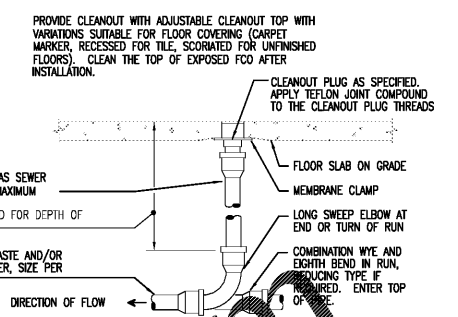
2 AIR DROP AT CEILING NOT TO SCALE



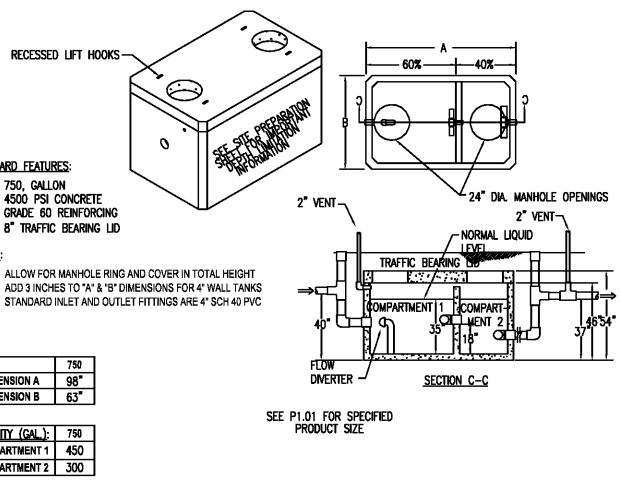
3 TRAP PRIMER INSTALLATION NO SCALE



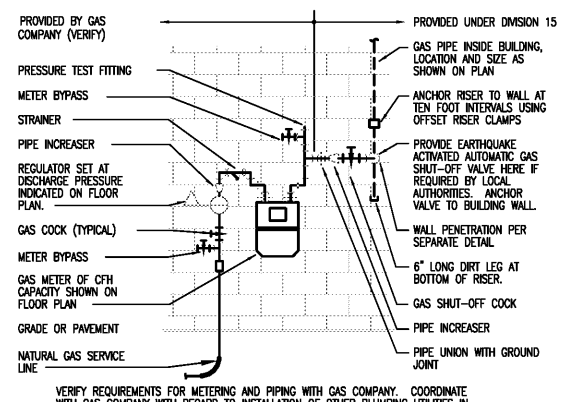
4 COMPRESSED AIR OUTLET NOT TO SCALE



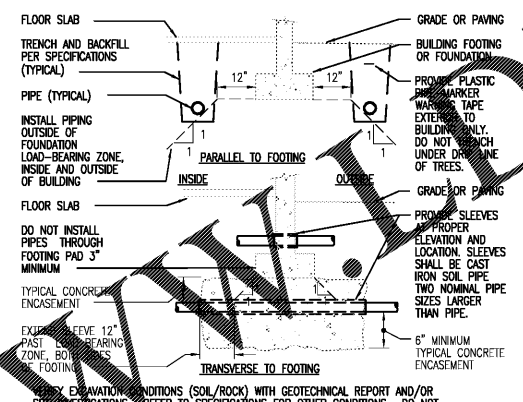
5 FLOOR CLEANOUT NOT TO SCALE



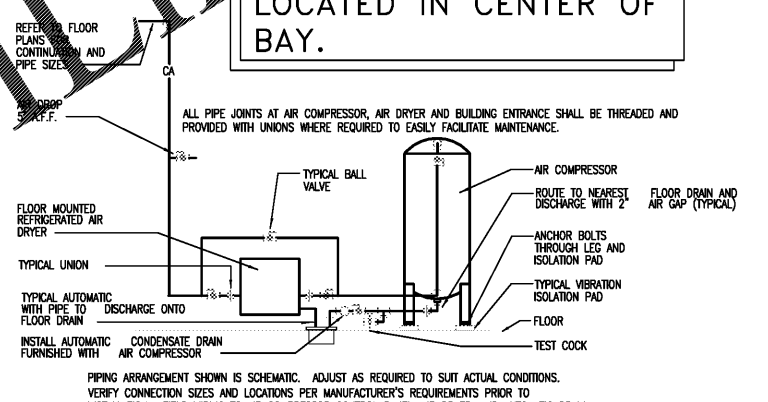
6 PRECAST CONCRETE /OIL SEPARATOR NOT TO SCALE



7 GAS METER SETTING NOT TO SCALE



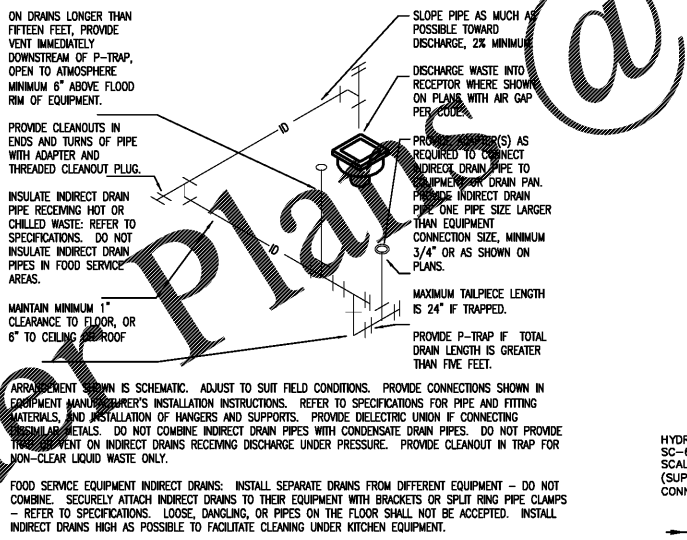
8 PIPE AND TRENCH LOCATION NOT TO SCALE



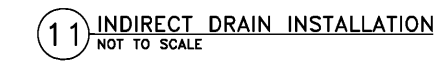
9 AIR COMPRESSOR PIPING SCHEMATIC NOT TO SCALE

NOTE:
ALL CLEANOUTS TO BE LOCATED IN CENTER OF BAY.

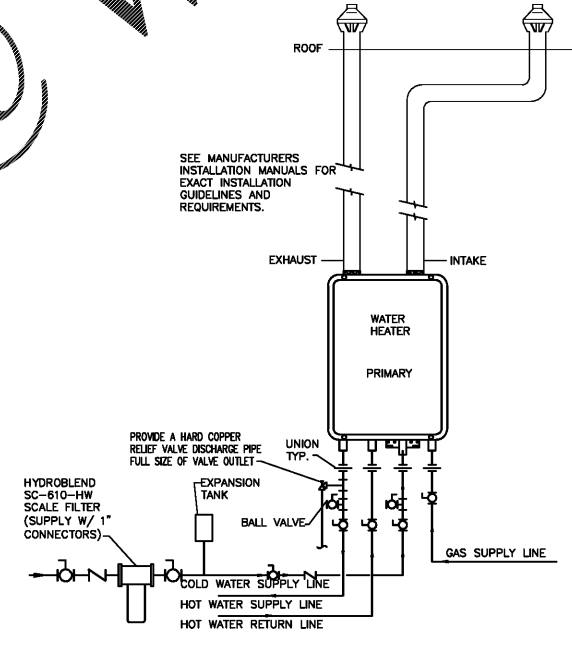
SIZING PER 2012 INTERNATIONAL PLUMBING CODE:
6 CUBIC FOOT OF CAPACITY FOR THE FIRST 100 SQUARE FEET OF BUILDING 6 CUBIC FT.
1 CUBIC FOOT OF CAPACITY PER 100 SQUARE FEET OF BUILDING 4000 SQUARE FEET OF WORK SPACE 39.7 CUBIC FT.
3968/100 = 39.7 CUBIC FT.
1 CUBIC FOOT = 7.48 GALLONS TOTAL 45.7 CUBIC FT.
45.7 x 7.48 = 341.8 GALLONS



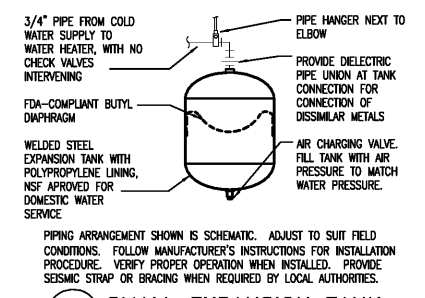
10 DOMESTIC WATER SERVICE ENTRY NOT TO SCALE



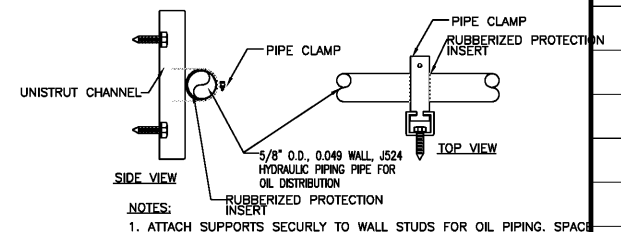
11 INDIRECT DRAIN INSTALLATION NOT TO SCALE



12 TANKLESS GAS WATER HEATER NOT TO SCALE



13 SMALL EXPANSION TANK NOT TO SCALE



14 OIL PIPE MOUNTING DETAIL NOT TO SCALE



Christian Brothers Automotive
5650 Peachtree Industrial Boulevard
Norcross, GA 30071



10/19/2018
Date

Revisions
2/28/18 - Prototype Update

Project No. 18-042

Drawn By:

Date: 10/19/18

Sheet Title:

PLUMBING DETAILS

Drawing No.

P-5.01

LH9N-09-2018

