

STEWART + REINDERSMA ARCHITECTURE, PLLC

5450 E. High Street, Suite 200
Phoenix, Arizona 85054
P: 480.515.5123
www.sra360.com

Christian Brothers Automotive
5650 Peachtree Industrial Boulevard
Norcross, GA 30071

Christian Brothers Automotive
1725 Katy Freeway, St. 200
Houston, TX 77054



10/19/2018
Date

Revisions

2/28/18 - Prototype Update

Project No. 18-042

Drawn By:

Date: 10/19/18

Sheet Title:

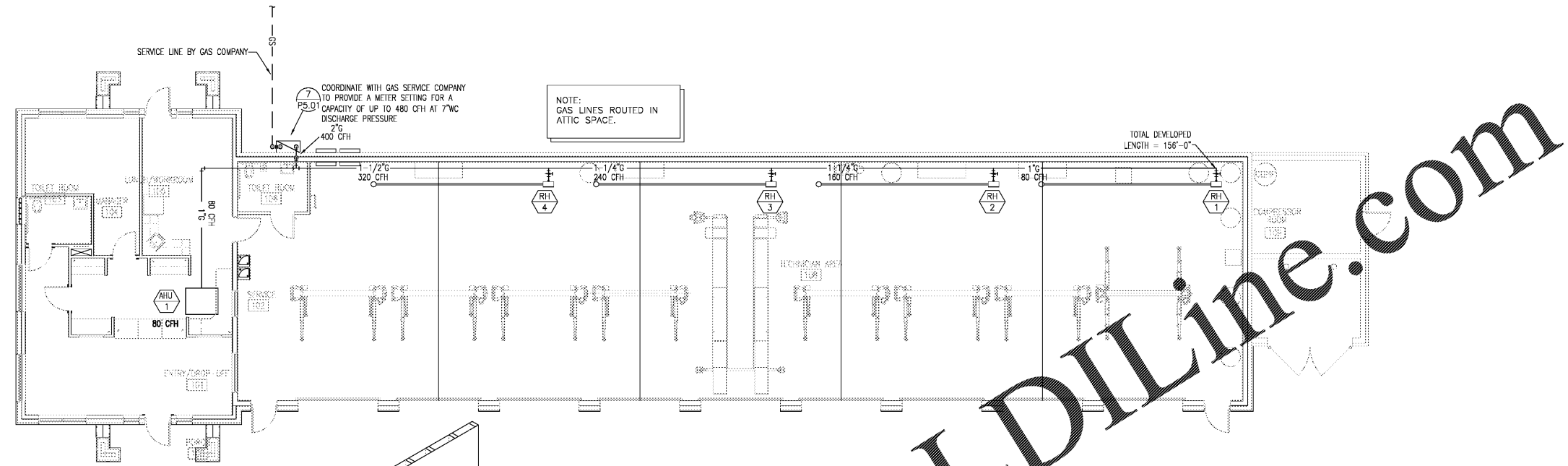
NATURAL GAS AND COMPRESSED AIR PLANS

Drawing No.

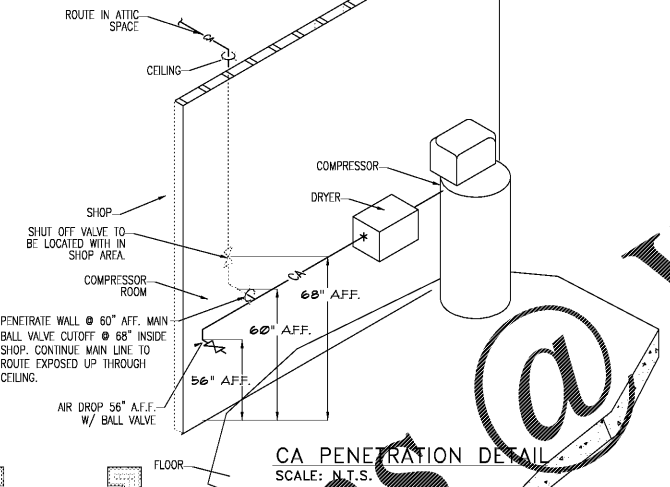
P-3.02

LH9N-09-2018

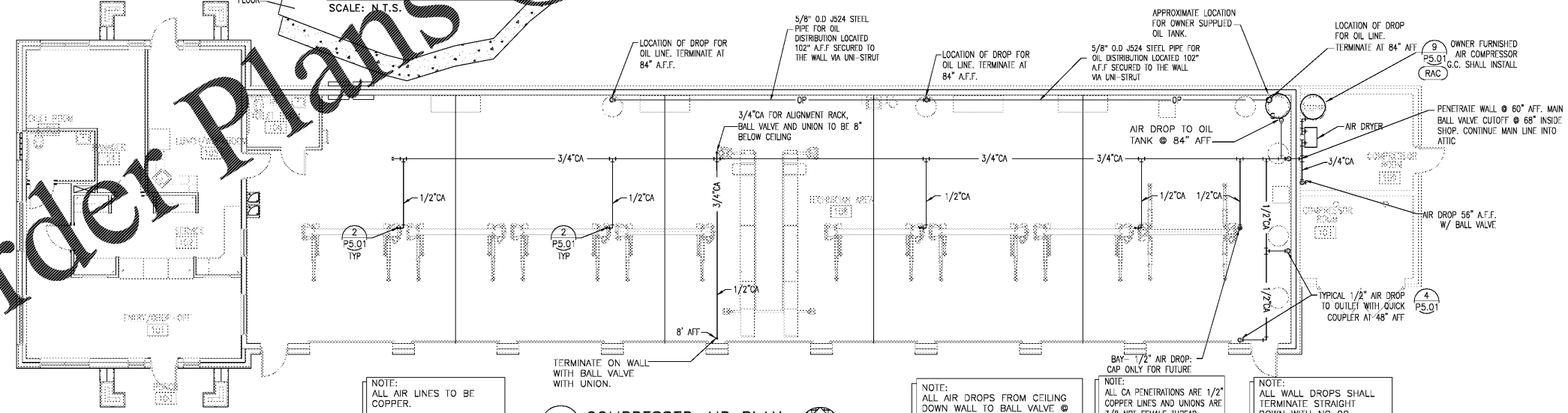
Adifica | case
engineering
798 Mans Court
St. Louis, MO 63126
P: 636.349.1690
F: 636.349.1730
adificacase.com
St. Louis - Montreal
mechanical
electrical
fire protection
structural
CERTIFICATE OF AUTHORITY NO. PE5966438



1 NATURAL GAS FLOOR PLAN
SCALE: 1/8"=1'-0"



CA PENETRATION DETAIL
SCALE: N.T.S.



2 COMPRESSED AIR PLAN
SCALE: 1/8"=1'-0"

Order Plans @

WWW.LDILINE.COM