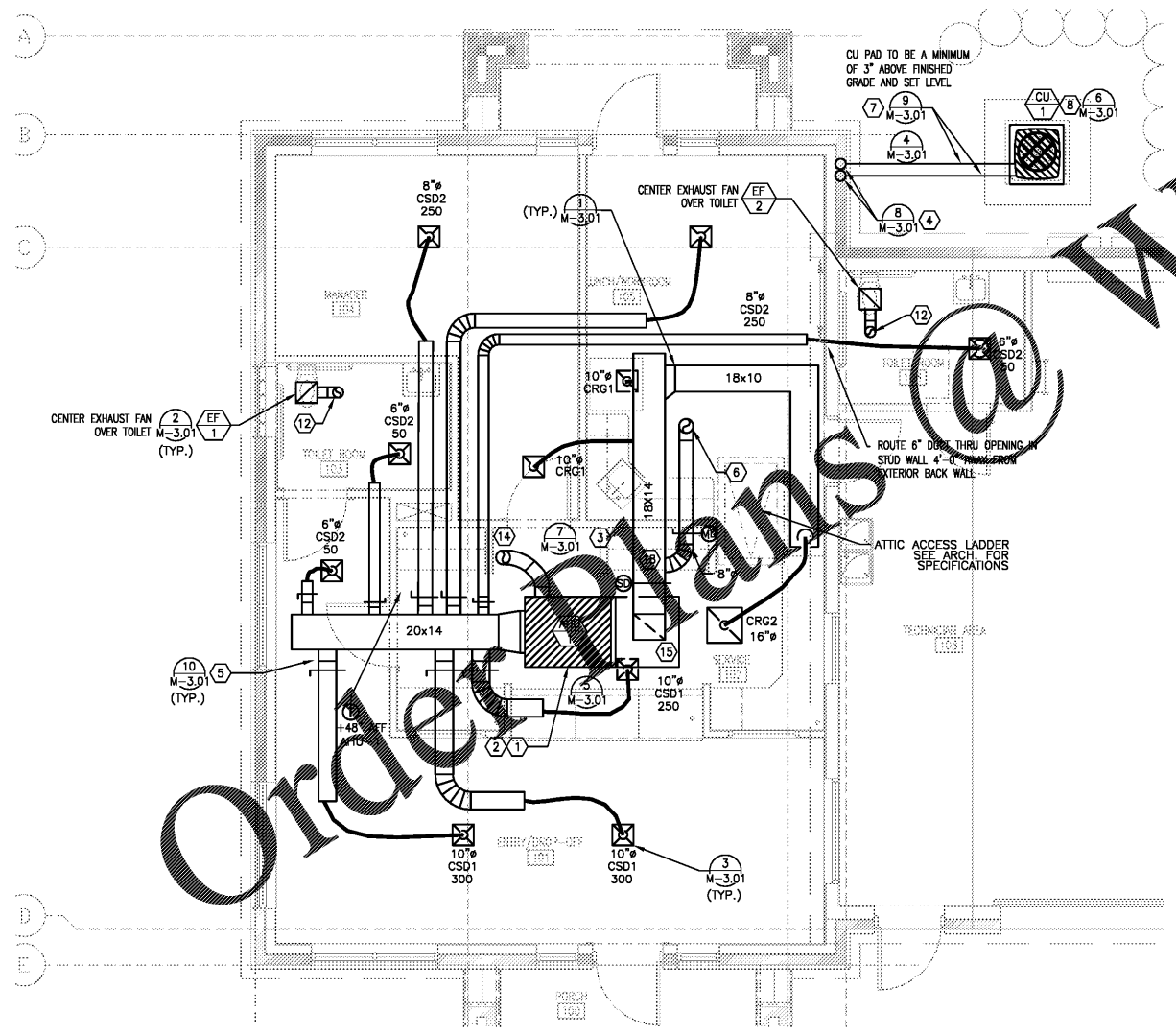


1 MECHANICAL FLOOR PLAN
SCALE: 1/8"=1'-0"



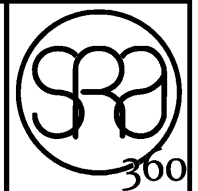
2 ENLARGED OFFICE MECHANICAL FLOOR PLAN
SCALE: 1/4"=1'-0"

MECHANICAL GENERAL NOTES:

- A. PRIOR TO SUBMITTING BIDDING CONTRACTOR AND SUBCONTRACTORS SHALL VISIT THE JOB SITE AND BECOME FULLY ACQUAINTED WITH THE EXISTING CONDITIONS OF THE PROJECT. THE CONTRACTOR AND SUBCONTRACTORS SHALL BE RESPONSIBLE FOR REVIEW OF ALL GENERAL NOTES, SPECIFICATIONS AND ALL OTHER DRAWINGS FOR ADDITIONAL REQUIREMENTS WHICH MAY NOT BE SPECIFICALLY CALLED OUT IN THIS PORTION OF THE CONSTRUCTION DOCUMENTS. NOTIFY ARCHITECT, ENGINEER AND/OR OWNER OF ANY CONFLICTS OR DISCREPANCIES PRIOR TO SUBMISSION OF BID.
- B. COORDINATE THE INSTALLATION OF THE MECHANICAL SYSTEMS WITH OTHER TRADES TO ENSURE A NEAT AND ORDERLY INSTALLATION. DUCTWORK AND PIPING SHALL BE ROUTED TO AVOID CONFLICTS WITH ELECTRICAL PANELS, LIGHTING FIXTURES, ETC.
- C. TAKE NECESSARY PRECAUTIONS TO AVOID DAMAGING EXISTING SURFACES AND EQUIPMENT DURING WORK. CONTRACTOR SHALL REPAIR ANY DAMAGE CAUSED DURING CONSTRUCTION AT NO EXTRA COST TO THE OWNER.
- D. PROVIDE ALL MECHANICAL EQUIPMENT SHOWN ON THE MECHANICAL PLANS UNLESS OTHERWISE NOTED.
- E. NEW MECHANICAL EQUIPMENT, DUCTWORK AND PIPING IS SHOWN AT APPROXIMATE LOCATIONS. FIELD MEASURE FINAL DUCTWORK AND PIPING LOCATIONS PRIOR TO FABRICATION AND MAKE ADJUSTMENTS AS REQUIRED TO FIT THE DUCTWORK AND PIPING WITHIN THE AVAILABLE SPACE. FIELD VERIFY FINAL EQUIPMENT LOCATIONS TO INSTALL EQUIPMENT IN ACCORDANCE WITH MANUFACTURER'S RECOMMENDATIONS REGARDING SERVICE CLEARANCE AND PROPER AIRFLOW CLEARANCE AROUND EQUIPMENT.
- F. REFER TO ARCHITECTURAL DRAWINGS FOR ALL RELATED CONSTRUCTION DETAILS AS APPLICABLE TO THE HVAC SYSTEM. CHASES AND PENETRATIONS INTENDED FOR DUCTWORK AND PIPING ROUTINGS SHALL BE VERIFIED WITH ARCHITECT.
- G. INSTALL ALL DUCTWORK AND PIPING PARALLEL TO BUILDING COLUMN LINES UNLESS OTHERWISE SHOWN OR NOTED.
- H. SEAL ALL PENETRATIONS THROUGH THE BUILDING COMPONENTS IN ACCORDANCE WITH THE CONTRACT SPECIFICATIONS. FIREPROOF ALL PENETRATIONS THROUGH FIRE RATED COMPONENTS IN ACCORDANCE WITH U.L. REQUIREMENTS.
- I. COORDINATE REGISTERS, AND GRILLES WITH THE SUPPLIER TO MEET THE CEILING, WALL AND DUCT INSTALLATION REQUIREMENTS.
- J. ALL AIR DEVICES THAT ARE LOCATED CLOSE TO WALL SHALL BE PLACED TO AS TO CLEAR CROWN MOULDING.
- K. LOCATE, WIRE AND SET THERMOSTATS/TEMPERATURE SENSORS. VERIFY EXACT LOCATIONS WITH ARCHITECT PRIOR TO INSTALLATION. MOUNTING HEIGHTS SHALL BE 54" AFF TO MEET ADA REQUIREMENTS UNLESS NOTED OTHERWISE ON PLANS.
- L. RIGID DUCTWORK INSULATION: PROVIDE 2" THICK, 3/4 LB DENSITY INSULATION WRAP ON ALL RIGID ROUND AND RECTANGULAR CONCEALED SUPPLY AIR DUCTS AND ON ALL OUTSIDE AIR DUCTS (ALL THAT ARE NOT LINED). PROVIDE 1-1/2" THICK, 3 LB DENSITY INTERNAL DUCT LINER ON THE FIRST 15 FEET OF RECTANGULAR SUPPLY AND RETURN AIR DUCTS FROM THE CONNECTION TO THE EQUIPMENT. ALSO PROVIDE INTERNAL DUCT LINER ON ALL EXPOSED DUCTWORK. SIZES ON MECHANICAL PLANS INDICATE CLEAR INSIDE AIRFLOW DIMENSIONS; INCREASE SHEETMETAL SIZES ACCORDINGLY.
- M. FLEXIBLE DUCTWORK SHALL BE THERMAFLEX TYPE WKE, FLEXMASTER TYPE BM, OR APPROVED EQUAL, SHALL BE LISTED UNDER UL 181 AS CLASS 1 AIR DUCT AND SHALL BE PROVIDED WITH INTEGRAL 2" THICK, 3/4 LB DENSITY FIBERGLASS INSULATION. FLEXIBLE DUCTWORK NOT TO EXCEED 5'-0" IN LENGTH. INSTALL AND SUPPORT TO AVOID SHARP BENDS AND SAGGING.
- N. PROVIDE A NEW SET OF AIR FILTERS IN ALL UNITS JUST BEFORE TURNING SYSTEMS OVER TO OWNER.
- O. MOTORIZED DAMPERS SHALL BE DRIVEN BY TWO-POSITION, 120-VOLT ACTUATORS. PROVIDE 24-VOLT RELAY AND CONNECT TO FAN WIRING FROM THERMOSTAT. REFER TO ELECTRICAL PLANS FOR 120-VOLT WIRING.
- P. INSTALL ALL DUCTWORK TIGHT TO STRUCTURE.
- Q. ALL WORK SHALL BE DONE IN STRICT COMPLIANCE WITH THE INTERNATIONAL MECHANICAL CODE, THE INTERNATIONAL PLUMBING CODE, THE INTERNATIONAL ENERGY CONSERVATION CODE, ALL STATE REQUIREMENTS, AND LOCAL REQUIREMENTS.

MECHANICAL KEYED NOTES:

- 1 LOCATE NEW AIR HANDLING UNIT AS INDICATED. UNIT SHALL BE ACCESSIBLE FOR SERVICE FROM ATTIC SPACE. MOUNT UNIT TIGHT TO STRUCTURE. SUSPEND UNIT FROM STRUCTURE PER MANUFACTURER'S RECOMMENDATIONS. COORDINATE MOUNTING HEIGHT/LOCATION OF THE UNIT WITH OTHER BUILDING SYSTEMS TO ALLOW WORKING CLEARANCES AS REQUIRED BY CODE AND UNIT MANUFACTURER. RE: #4.5/M-3.01 AIR HANDLING UNIT FILTER SECTION TO BE ACCESSIBLE IN ATTIC SPACE. COORDINATE INSTALLATION OF UNIT SUPPORTS AND PIPING TO MAINTAIN ACCESS AND CLEARANCE FOR FILTER REPLACEMENT.
- 2 REFER TO PLUMBING DRAWINGS FOR CONDENSATE DRAIN LINES.
- 3 MECHANICAL CONTRACTOR SHALL PROVIDE SMOKE DETECTOR IN THE RETURN DUCTWORK OF THE AIR HANDLING UNIT UPSTREAM OF OUTSIDE CONNECTION POINT. SMOKE DETECTOR SHALL BE ACCESSIBLE IN ATTIC SPACE. RE: #5/M-3.01.
- 4 ROUTE REFRIGERANT PIPING IN THE ATTIC SPACE FROM THE AIR HANDLER UNIT OVER TO, DOWN THRU THE WALL, AND OVER TO THE GROUND-MOUNTED CONDENSING UNIT. RE: #4.8.9/M-3.01.
- 5 PROVIDE SPIN-IN CONNECTION WITH LOCKING QUADRANT DAMPER. TYPICAL ON ALL ROUND DUCTS TAPPED FROM RECTANGULAR BRANCH DUCTWORK ABOVE GYP. BD. CEILINGS, UNLESS OTHERWISE NOTED. RE: #10/M-3.01.
- 6 8" OUTSIDE AIR DUCT. PROVIDE MOTORIZED DAMPER IN DUCTWORK AND BALANCE TO CFM AS SCHEDULED IN AIR HANDLER UNIT SCHEDULE.
- 7 ALL HORIZONTAL EXTERIOR REFRIGERANT PIPING RUNS SHALL BE SUPPORTED FROM WALLS OR SET ON WOOD BLOCKS TO BE KEPT OFF THE GROUND. RE: #6.5/M-3.01. PIPING SHALL BE INSTALLED PERPENDICULAR TO BUILDING LINES IN AN ORDERLY MANNER.
- 8 LOCATE NEW CONDENSING UNIT AS INDICATED. MOUNT UNIT ON EQUIPMENT PAD PER MANUFACTURER'S RECOMMENDATIONS WHILE MAINTAINING WORKING CLEARANCES AS REQUIRED BY CODE AND UNIT MANUFACTURER. PAD SHALL BE A MINIMUM OF 3" ABOVE FINISHED GRADE AND SET LEVEL. RE: #6/M-3.01.
- 9 40"x40" RUSKIN INTAKE AIR LOUVER (MODEL ELF375X) WITH MOTORIZED DAMPER EQUAL TO GREENHECK VCD-23-40X40 AND ACTUATOR EQUAL TO HONEYWELL MS8110A1206. CENTER ON WALL BETWEEN BAYS 8 AND 9. INTERLOCK THE LOCAL LOUVER MOTORIZED DAMPER WITH THE CLOSEST EXHAUST FAN. EXAMPLE: LOUVER CLOSEST TO SF-1 SHALL BE INTERLOCKED WITH EF-3. LOUVER CLOSEST TO SF-4 SHALL BE INTERLOCKED WITH EF-4.
- 10 WALL-MOUNTED SUPPLY FAN. MOUNT FAN AT 8'-6" AFF. COORDINATE WITH ELECTRICAL. PROVIDE WALL SWITCH AT EACH FAN TOGETHER WITH DUPLEX AT 54" AFF.
- 11 SUSPEND RADIAN TUBE HEATER FROM CEILING AT 45 DEGREE ANGLE PER MANUFACTURER'S RECOMMENDATIONS. MOUNT THERMOSTAT AT LOCATION SHOWN ON PLAN 54" AFF.
- 12 6" EXHAUST DUCT UP THROUGH REAR OF ROOF SO AS NOT TO BE SEEN FROM FRONT OF BLDG. PROVIDE WEATHER-PROOF ROOF CAP.
- 13 COORDINATE LOCATION OF INLINE EXHAUST FAN WITH STRUCTURAL SPACING OF 34" FOR FAN. LOCATE FAN ABOVE TOP OF TRUSS CHORD AND EXTEND EXHAUST DUCT DOWN TO 24"x24" LOUVERED EXHAUST GRILLE IN SHOP CEILING AS SCHEDULED IN GRILLE SCHEDULE ON M-1.01. IN CEILING, ROUTE 20"x20" DUCT FROM EXHAUST FAN UP TO GREENHECK CRGR-24 GRAVITY RELIEF VENT CAP, GRV-1 AND GRV-2, WITH SLOPED ROOF CURB, BACKDRAFT DAMPER AND BIRDSCREEN. EF-3 AND EF-4 SHALL DISCHARGE THROUGH REAR OF ROOF SO AS NOT TO BE SEEN FROM FRONT OF BLDG.
- 14 ROUTE FULL SIZE TYPE B FLUE UP THROUGH ROOF AND PROVIDE TYPE B ROOF CAP WITH INSECT SCREEN. TERMINATIONS MUST PENETRATE ROOF AT REAR OF BUILDING, SO AS NOT TO BE SEEN FROM FRONT OF THE BUILDING.
- 15 FULL SIZED RETURN AIR DUCT.
- 16 INTEGRAL 28"x28" DOOR LOUVER. REFERENCE ARCHITECTURAL DOOR SCHEDULE ON SHEET A-2.1.
- 17 8"x12" RUSKIN INTAKE AIR LOUVER (MODEL ELF375X) IN WALL WITH BIRDSCREEN. REFER TO ARCHITECTURAL DRAWINGS FOR ELEVATION.
- 18 ROUTE RETURN AIR DUCT UP TO UNDERSIDE OF STRUCTURE.



300
STEWART + REINDERSMA
ARCHITECTURE, PLLC
5450 E. High Street, Suite 200
Phoenix, Arizona 85054
P: 480.515.5123
www.sra360.com

**Christian Brothers
Automotive**
5650 Peachtree Industrial Boulevard
Norcross, GA 30071



10/19/2018
Date

Revisions	
2/28/18 - Prototype Update	
Project No.	18-042
Drawn By:	
Date:	10/19/18
Sheet Title:	

Edifica | case
engineering
St. Louis - Montreal
796 Mans Court
St. Louis, MO 63026
P: 636.349.1600
F: 636.349.1750
edificacase.com
mechanical
electrical
plumbing
fire protection
structural
CERTIFICATE OF AUTHORITY NO. PEP006438

**MECHANICAL
FLOOR PLAN**
Drawing No.
M-2.01
LH9N-09-2018