

ROOF FRAMING PLAN

SHEET NOTES: SCALE: 1/8" = 1'-0"

- SEE SHEET S-1 THRU S-4 FOR GENERAL NOTES, & TYPICAL DETAILS.
- SEE ARCHITECTURAL DRAWINGS FOR ADDITIONAL DIMENSIONS, SECTIONS, AND ELEVATIONS. TRUSS MFR TO COORD W/ CONTRACTORS TO DETERMINE RTU & TRANSFORMER LAYOUTS, WEIGHTS, AND FOOTPRINTS. TRUSS MFR TO COORD W/ ROOF HATCH SUPPLIER FOR SIZE AND LOCATION. RTU & EXHAUST HOOD LOADS ARE TO BE IN ADDITION TO LOADS DUE TO SNOW & DEAD LOADS

LEGEND

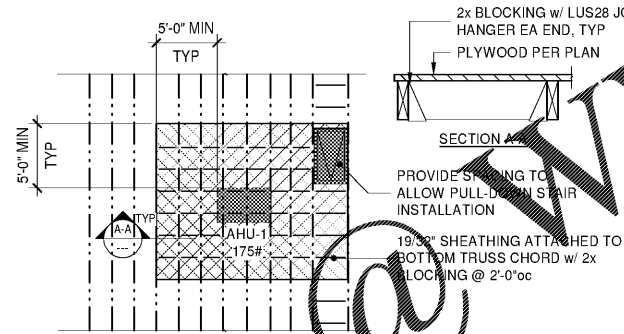
- INDICATES TOP PLATE SPLICE FOR PLATE BEL PER TYPICAL TOP PLATE SPLICE DETAIL
- INDICATES WINDOW OPENING PER ARCHITECTURAL DRAWINGS
- INDICATES HEADER PER WOOD HEADER SCHEDULE

WOOD HEADER SCHEDULE		
MARK	SIZE	JACK & KING STUDS
H1	(3) 2x6	(1) JACK, (2) KING STUDS & BEAM
H2	(3) 2x10	(1) JACK, (2) KING STUDS & BEAM
H3	(4) 1 3/4" x 11 7/8" LVL	(2) KING STUD (2) JACK STUD

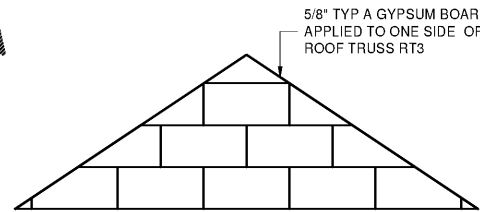
STEEL LINTEL SCHEDULE		
FOR LINTELS NOT SHOWN IN THE DOOR OR WINDOW SCHEDULE OR ON THE ARCH. DRAWINGS, USE THE ANGLE SIZE SHOWN IN THE TABLE BELOW		
OPENING SIZE	BRICK VENEER ANGLE SIZE	KEY
UP TO 1'-0"	N/A	
1'-1" TO 3'-4"	L 4"x4"x 1/4" LLV	
3'-5" TO 4'-8"	L 4"x4"x 5/16" LLV	
4'-9" TO 6'-8"	L 6"x4"x 5/16" LLV	
6'-9" TO 10'-0"	L 6"x4"x 3/8" LLV	
10'-1" TO 12'-0"	L 6"x4"x 1/2" LLV	

NOTES

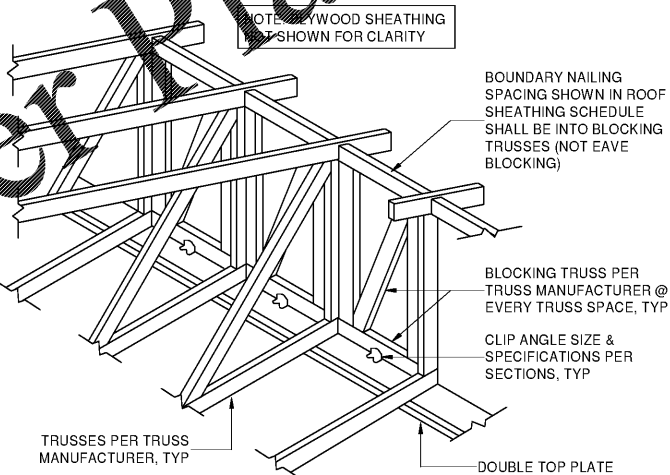
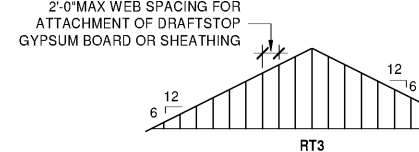
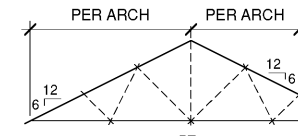
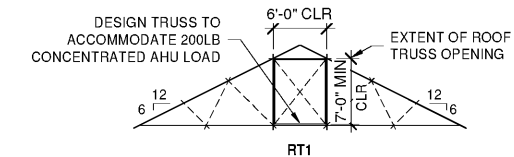
- ALL ANGLES MUST HAVE 8" OF BEARING AT EACH END
- THIS SCHEDULE DOES NOT INCLUDE EFFECT OF FLOOR OR ROOF FRAMING LOADING.
- PAINT LINTEL PER ARCHITECTURAL DRAWINGS.



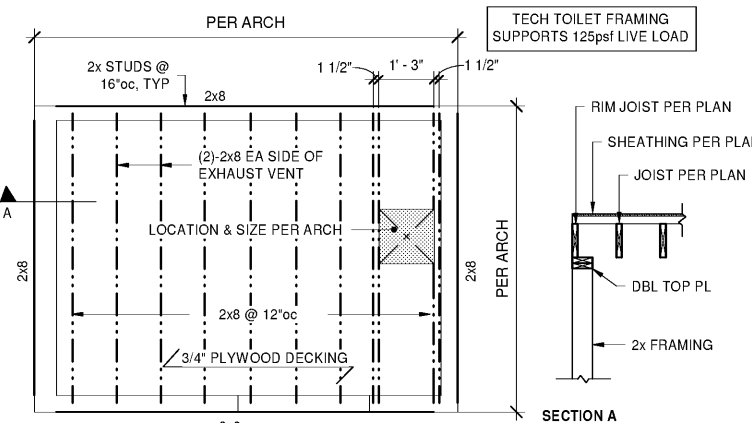
A PARTIAL OFFICE ATTIC FRAMING PLAN
1/8" = 1'-0"



B DRAFT STOP @ TRUSS RT3
1" = 1'-0"



C TYPICAL BLOCKING TRUSS DETAIL
3/4" = 1'-0"



D TECH TOILET ROOM PLATFORM CEILING FRAMING PLAN
1/2" = 1'-0"

- TRUSS WEBS AND THEIR CONFIGURATIONS SHALL BE DESIGNED BY PRE-ENGINEERED TRUSS MANUFACTURER.
- ALL WOOD ROOF TRUSSES SHALL HAVE MINIMUM 4" NOMINAL BEARING EACH END, AND MAXIMUM 2'-0" ON CENTER SPACING, UNLESS OTHERWISE NOTED.
- WOOD ROOF TRUSSES, TEMPORARY AND PERMANENT TRUSS BRIDGING AND TRUSS BRACING SHALL BE DESIGNED BY TRUSS MANUFACTURER IN ACCORDANCE WITH STATE AND LOCAL CODES AND ALL APPLICABLE REQUIREMENTS. CONTRACTOR SHALL SUBMIT SHOP DRAWINGS AND CALCULATIONS TO THE CHRISTIAN BROTHERS AUTHORIZED REPRESENTATIVE FOR REVIEW AND APPROVAL.
- ALL TRUSSES SHALL BE SECURELY BRACED IN ACCORDANCE WITH "BRACING WOOD TRUSSES" COMMENTARY AND RECOMMENDATIONS (HB-91 & DSA-89), AS PUBLISHED BY THE TRUSS PLATE INSTITUTE.
- REFER TO LUMBER AND WOOD TRUSS NOTES FOR ADDITIONAL INFORMATION.

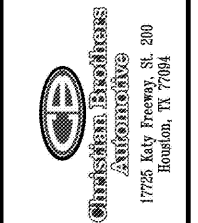
E TRUSS PROFILES
3/4" = 1'-0"



SRA360, LLC
STEWART + REINDERSMA
ARCHITECTURE, PLLC

5450 E. High Street, Suite 200
Phoenix, Arizona 85054
P: 480.515.5123
www.sra360.com

Christian Brothers Automotive
5650 Peachtree Industrial Boulevard
Norcross, GA 30071



STEPHEN J. SACCO

Revisions
02/26/18 - Prototype Update

Project No. KNNG-18
Drawn By: RH
Date: 10/19/18
Sheet Title:
ROOF FRAMING PLAN & DETAILS

Drawing No.
S-7
LH9N-09-2018

