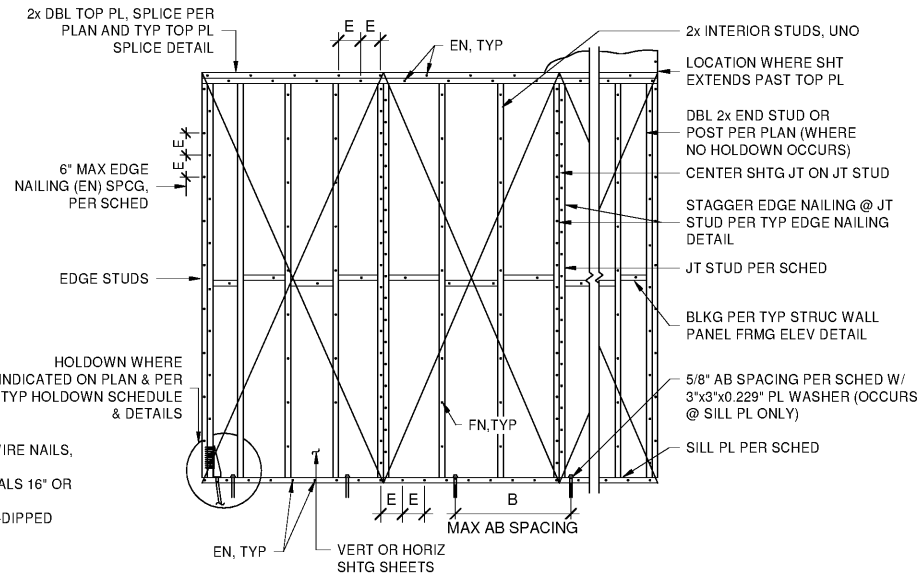


SILL PLATE BOLT SCHEDULE		
MARK	WALL SIDES SHEATHED	"B" FASTENER SPACING BOLT
⑥	1	48"
⑥	2	24"

WALL SHEATHING AND NAILING SCHEDULE				
MARK	SHTG THK	NAIL SIZE	"E" SPCG	SILL PLAND JT STUD
⑥	15/32"	8d	6"	2x*

- NOTES:**
- FIELD NAILING (FN): 10d @ 12" OC.
  - ALL NAILS SHALL BE COMMON OR GALVANIZED BOX WIRE NAILS, EXCEPT AS NOTED IN NOTE 4 BELOW.
  - MINIMUM DIMENSION OF ANY SHEATHING SHEET EQUALS 16" OR STUD SPACING, WHICHEVER IS GREATER.
  - ANCHOR BOLTS AND PLATE WASHERS SHALL BE HOT-DIPPED GALVANIZED.
  - NAIL SIZES SHOWN ARE COMMON. 8d=0.131" dia; 10d=0.1483" dia

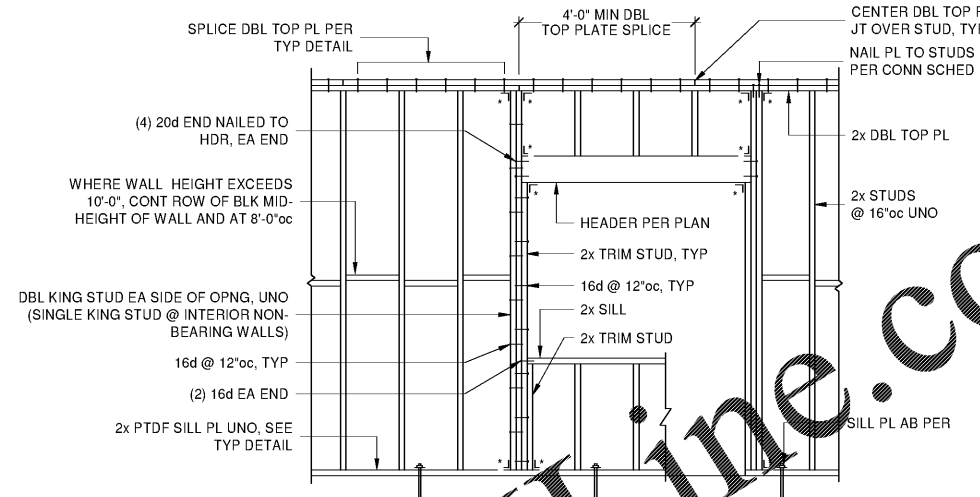


**A TYP SHEAR WALL SHEATHING AND FASTENER SCHEDULE**

S-4 N.T.S.

**B TYPICAL STRUCTURAL WALL PANEL FRAMING ELEVATION**

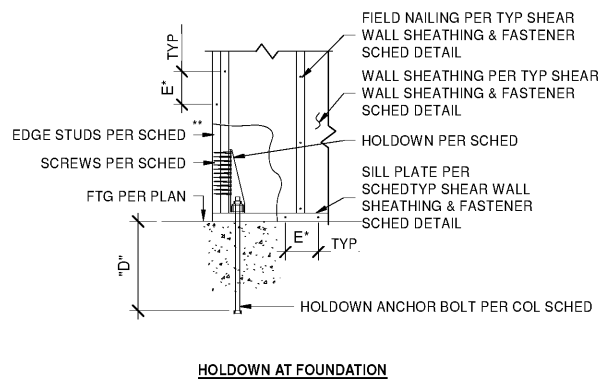
S-4 N.T.S.



- NOTES:**
- POWDER-ACTUATED FASTENERS (SHOT PINS) AND EXPANSION ANCHORS SHALL NOT BE USED TO ANCHOR WALLS ON CURBS OR AT SLAB EDGES.
  - HOLD DOWN ANCHOR BOLTS SHALL NOT REPLACE SILL PLATE ANCHOR BOLTS.
- ALL BOLTS, NAILS, METAL FRAMING CONNECTORS AND OTHER FASTENERS IN CONTACT WITH PRESERVATIVE OR FIRE RETARDANT TREATED LUMBER SHALL BE HOT-DIPPED GALVANIZED (ASTM A153) OR STAINLESS STEEL (TYPE 304 OR 316).
- \* A34 METAL FRAMING CONNECTOR (OMIT FOR INTERIOR NON-BEARING WALLS)

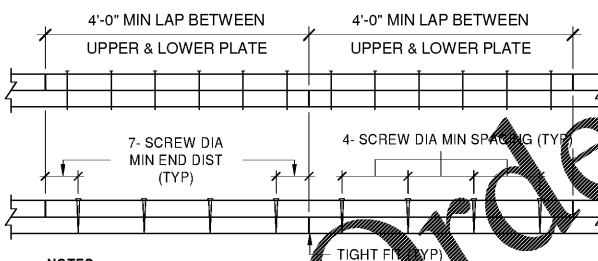
HOLDOWN SCHEDULE					
MARK	EDGE STUDS	SIMPSON HOLDOWN	SDS 1/4"x2 1/2" STUD SCWS	SIMPSON AB	"D" ASSEMBLY CAPACITY
A	2 - 2x	HDU2-SDS2.5	6	SB58	18" 3075 LBS
B	2 - 2x	HDU5-SDS2.5	14	SB58	18" 5645 LBS
C	7 1/4 x 7 1/4 POST, MIN	HDU14-SDS2.5	36	SB1	24" 14,375 LBS

- NOTES:**
- HOLDOWN ANCHOR BOLTS SHALL BE HOT-DIPPED GALVANIZED (ASTM A153).
  - ALL FASTENERS INSTALLED IN FIRE RETARDANT TREATED WOOD SHALL BE HOT-DIPPED GALVANIZED (ASTM A153) OR STAINLESS STEEL (TYPE 304 OR 316).
  - STEP DOWN FOOTING PER TYP DETAIL WHERE REQUIRED TO ACHIEVE MINIMUM ANCHOR BOLT EMBEDMENT.
  - HOLDOWN ANCHOR BOLTS SHALL BE HELD IN PLACE DURING CONCRETE PLACEMENT USING ABS AND ANCHORMATE ANCHOR BOLT HOLDERS, OR EQUIVALENT.
    - \* EDGE NAILING SPACING PER TYP SHEAR WALL DETAIL
    - \*\* WHERE HOLDOWN OCCURS ADJACENT TO A POST ON THE PLAN, USE THE LARGER OF THE INDICATED POST OR THE SCHEDULED END STUD.



**C TYP HOLDOWN SCHEDULE & DETAILS**

S-4 N.T.S.



- NOTES:**
- SPLICE 2x DOUBLE TOP PLATES PER MARK "A" AND 3x DOUBLE TOP PLATES PER MARK "D" OF THE ABOVE SCHEDULE, UNLESS OTHERWISE INDICATED.
  - SCREWS SHALL BE 3" LONG FOR 2x PLATES AND 5" LONG FOR 3x PLATES.
  - JOINTS IN UPPER AND LOWER PLATE SHALL BE CENTERED OVER STUD OR MULLION.
  - ALL NAILS SHALL BE COMMON WIRE NAILS.
  - SCHEDULE INDICATES NUMBER OF NAILS OR SCREWS ON EACH SIDE OF EACH JOINT.

NAIL SCHEDULE	
MARK	NAILS
A	8 - 16d
B	10 - 16d
C	12 - 16d

SCREWED SPLICE SCHEDULE	
MARK	SDS 1/4" SCREWS
D	6 - 1/4" SCREWS
E	12 - 1/4" SCREWS
F	24 - 1/4" SCREWS

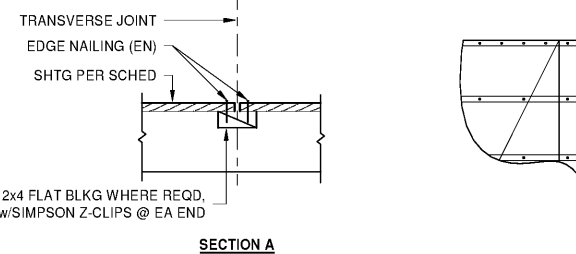
**NOTE:**  
AT LONG SHOP WALLS, PROVIDE CMST12 CONT STRAP ON EACH FACE OF DOUBLE TOP PLATE

**F TOP PLATE SPLICE DETAIL**

S-4 N.T.S.

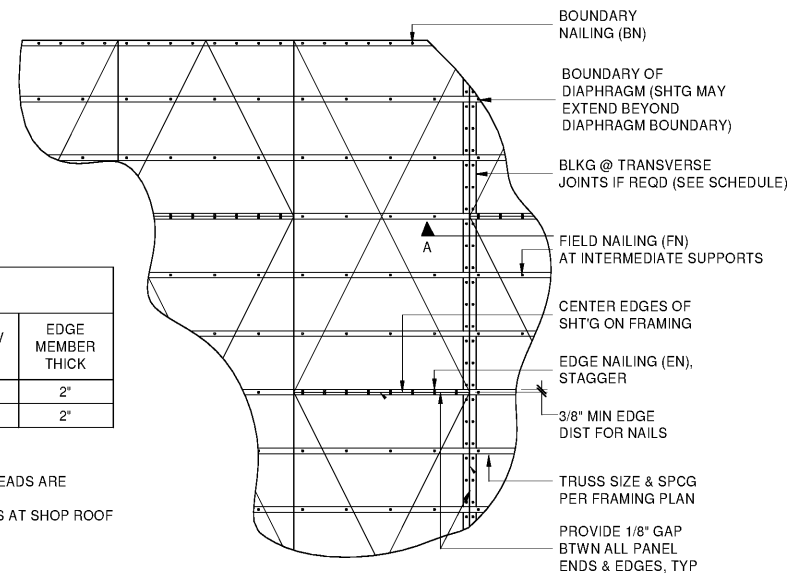
**D TYP EDGE NAILING DETAIL**

S-4 N.T.S.



**E TYPICAL SILL PLATE ANCHOR BOLT DETAIL**

S-4 N.T.S.

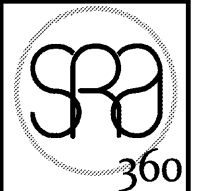


DIAPHRAGM SHEATHING & NAILING SCHEDULE							
MARK	SHT'G THICK	NAIL S/S IZ E	BN SPC'G	EN SPC'G	FN SPC'G	TRANSV BLK'G	EDGE MEMBER THICK
R1	19/32"	8d	6"	6"	12"	NO	2"
R2	19/32"	8d	6"	6"	12"	YES*	2"

- NOTE:**
- DIAPHRAGM SHEATHING NAILS SHALL BE DRIVEN SO THAT THEIR HEADS ARE FLUSH WITH THE SURFACE OF THE SHEATHING.
  - LONG DIMENSION OF SHEATHING TO BE PERPENDICULAR TO TRUSS AT SHOP ROOF.
  - NAIL SIZES SHOWN ARE COMMON. 8d = 0.131" dia; 10d = 0.1483" dia.

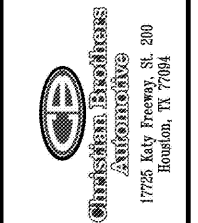
**G TYP ROOF SHEATHING DETAIL**

S-4 N.T.S.



**SRA360, LLC**  
STEWART + REINDERSMA ARCHITECTURE, PLLC  
5450 E. High Street, Suite 200  
Phoenix, Arizona 85054  
P: 480.515.5129  
www.sra360.com

**Christian Brothers Automotive**  
5650 Peachtree Industrial Boulevard  
Norcross, GA 30071



STEPHEN J. SACCO

**Revisions**

02/26/18 - Prototype Update

Project No. KNNG-18

Drawn By: RH

Date: 10/19/18

Sheet Title:

WOOD SHEARWALLS & TYPICAL DETAILS

Drawing No.

**S-4**  
LH9N-09-2018

