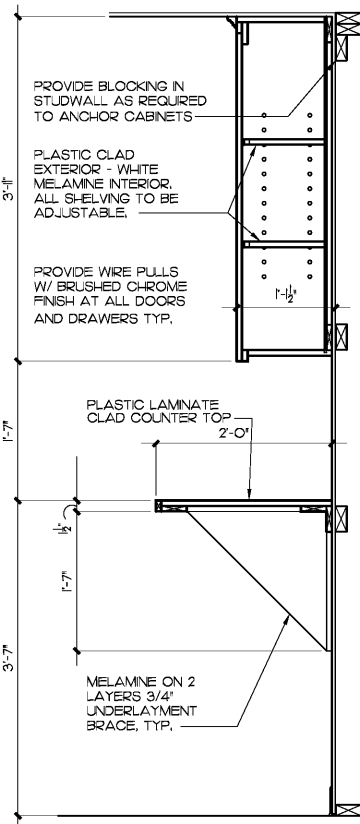
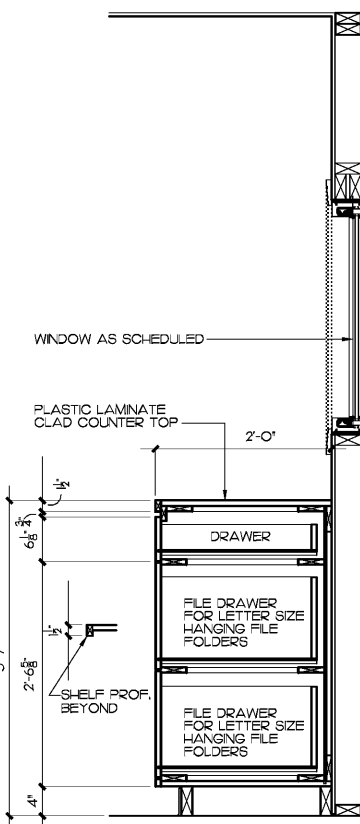


NOTE:
SIMILAR PROFILES WITH MATCHING DIMENSIONS WILL BE CONSIDERED AS ACCEPTABLE ALTERNATES.
ALL WOOD PROFILES TO BE MDF FINGER JOINTED FOR THE LENGTHS REQUIRED. ANCHOR WITH 6D FINISHING NAILS, SET, OR FIRE WOOD PLUGS. SCREWS TO STUD OR BLOCKING IN WALL & RESET PLUG PRIOR TO APPLICATION OF FINISH. PRIME ALL EXPOSED SURFACES & PAINT WITH PC-3, TWO COATS, GLOSS, WHITE LATEX ENAMEL.

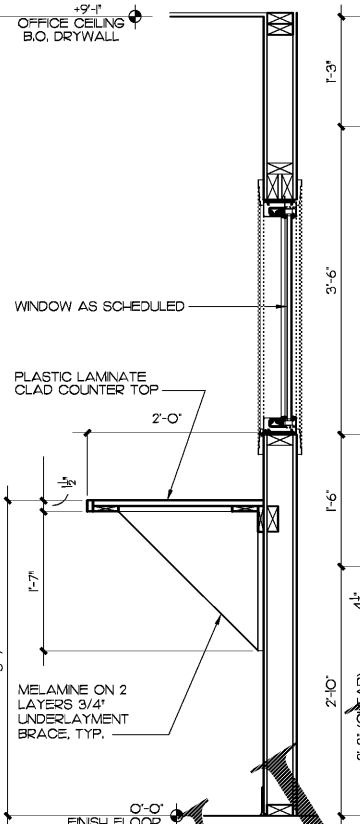
8 MOLDING DETAILS
SCALE: 6" = 1'-0"



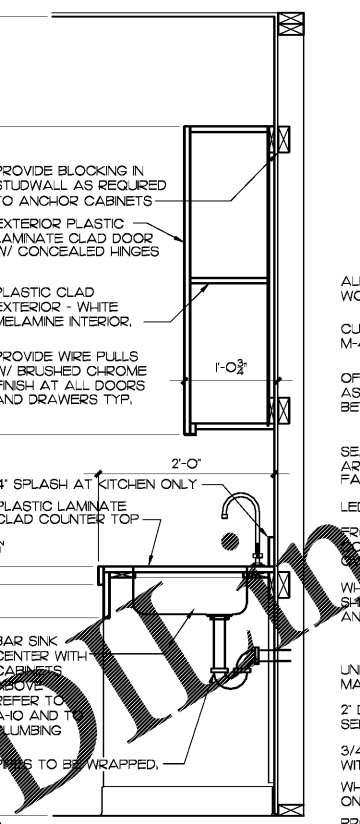
7 CABINET SECTION
SCALE: 1" = 1'-0"



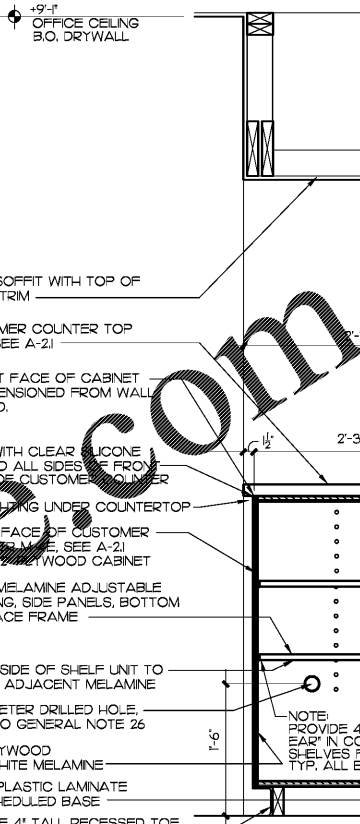
6 CABINET SECTION
SCALE: 1" = 1'-0"



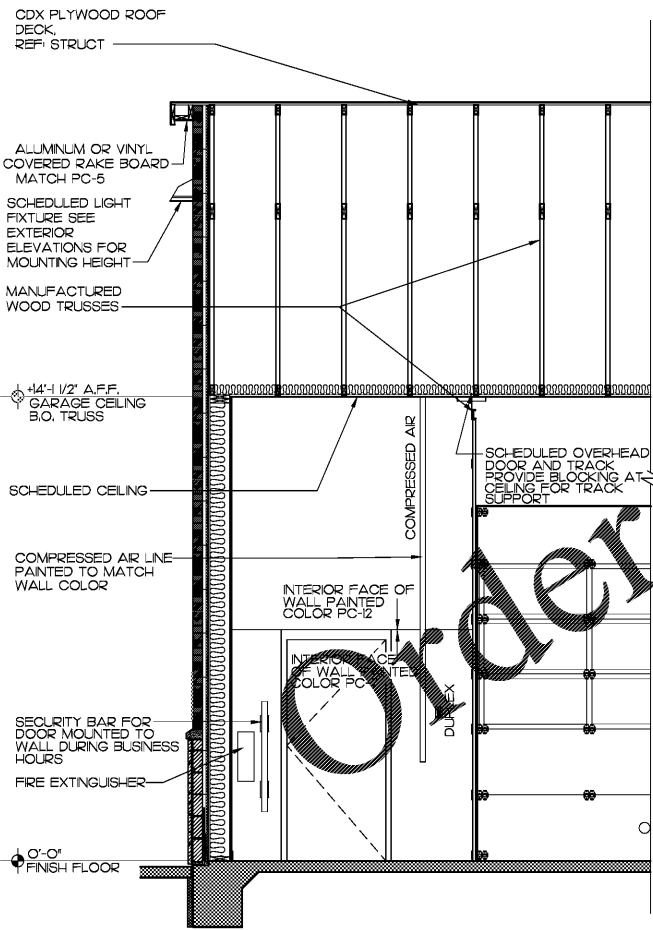
5 COUNTER SECTION
SCALE: 1" = 1'-0"



4 MILLWORK SECTIONS
SCALE: 1" = 1'-0"

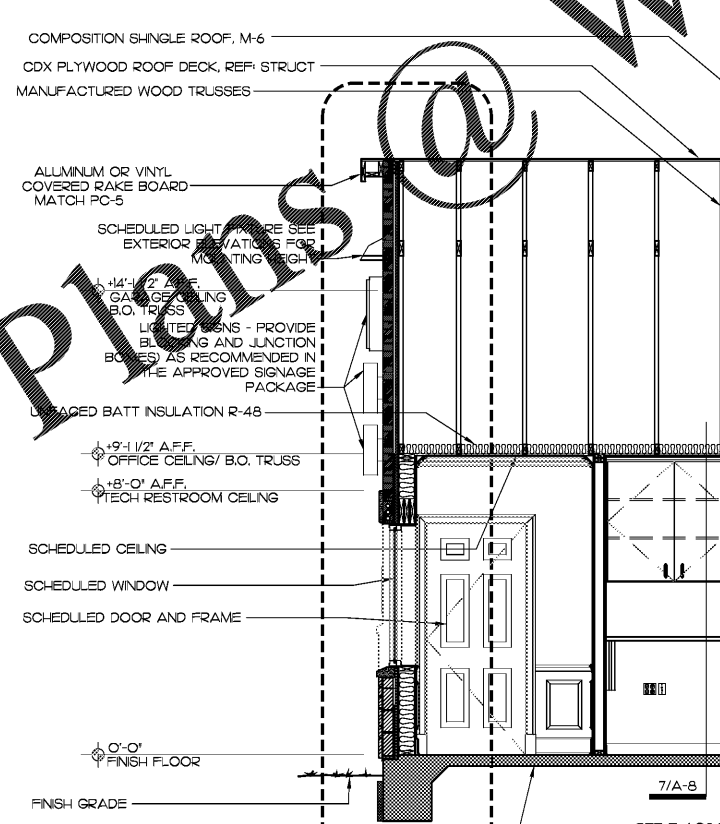


3 SERVICE COUNTER SECTION
SCALE: 1" = 1'-0"

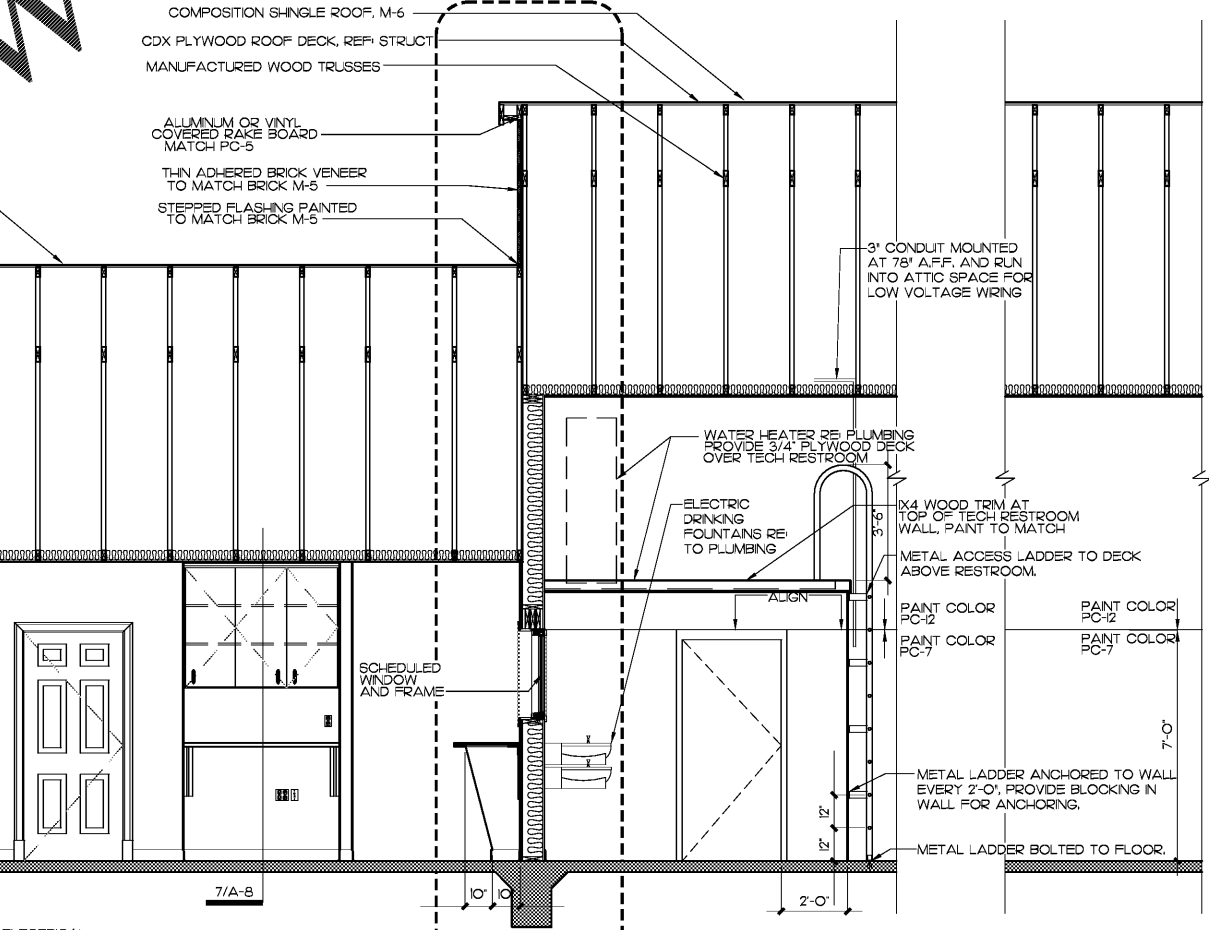


2 CROSS SECTION LOOKING TO FRONT
SCALE: 3/8" = 1'-0"

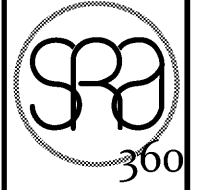
NOTE:
GROMMETS: HILLMAN, SWIMEL TYPE, 2 3/8" K8, #881307 (BLACK).
WIRE PULLS: GATEHOUSE, BRUSHED NICKEL, 3" PULL, #S271-3'



1 CROSS SECTION LOOKING TO BACK
SCALE: 3/8" = 1'-0"



6/A-61 CROSS SECTION LOOKING TO BACK
SCALE: 3/8" = 1'-0"



STEWART - REINDERMA ARCHITECTURE, PLLC
5450 E. High Street, Suite 200
Phoenix, Arizona 85054
P: 480.515.5123
www.sra360.com

Christian Brothers Automotive
5650 Peachtree Industrial Boulevard
Norcross, GA 30071



STATE OF GEORGIA
EXP. 6/30/18
MONIQUE REINDERSMA
REGISTERED ARCHITECT
12/18/2018
Date Signed

Revisions	
2/26/18 - Prototype Update	
11/26/18 - City Comments	
Project No. 18-042	
Drawn By:	
Date: 12/18/18	
Sheet Title:	BUILDING SECTIONS AND MILLWORK
Drawing No.	A-8

LH9N-09-2018