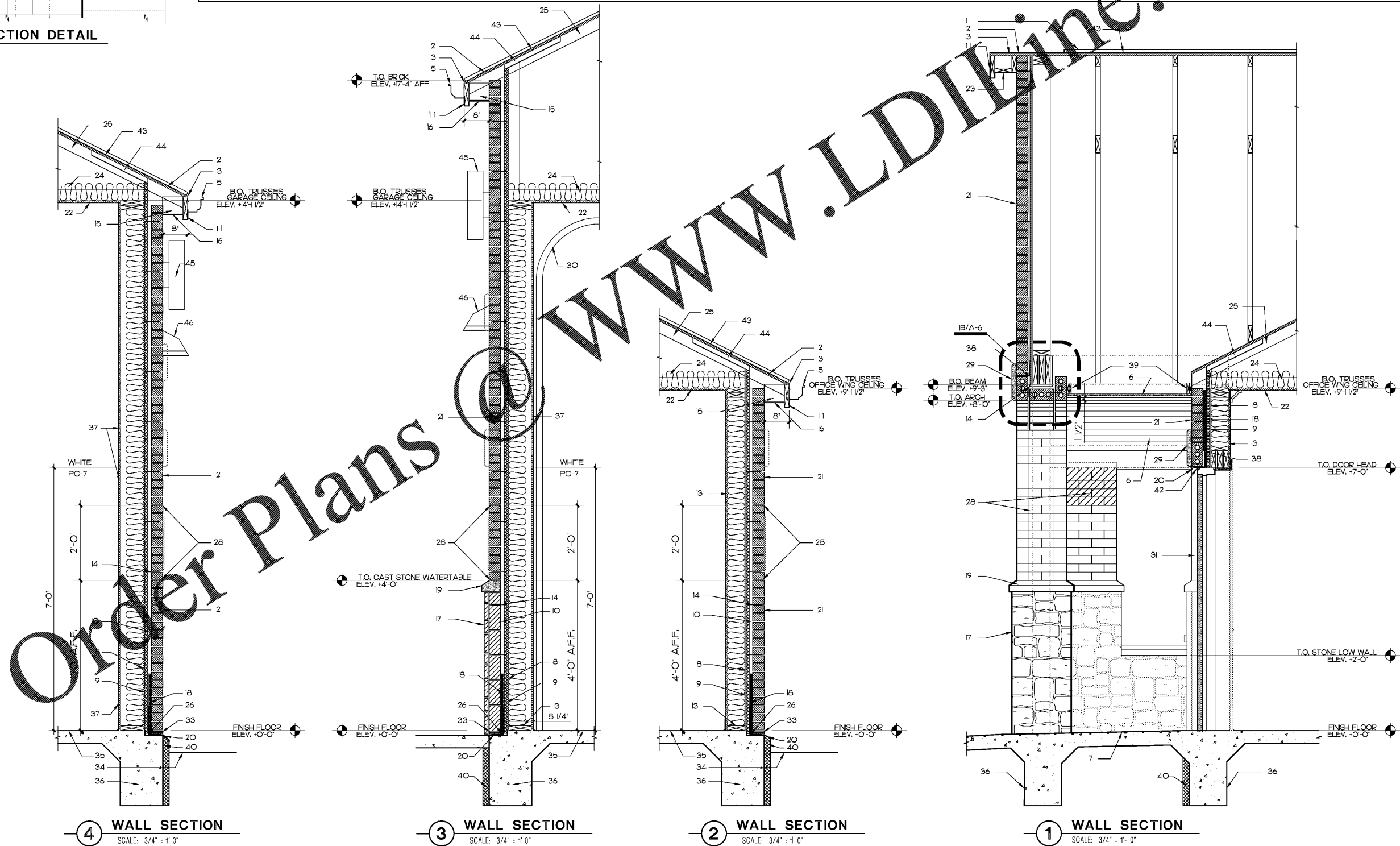


1B WALL SECTION DETAIL
SCALE: 1-1/2" = 1'-0"

KEYED SECTIONS NOTES

1. ASPHALT COMPOSITION SHINGLE ROOF CONTINUOUS RIDGE VENTS. CUT DECKING BACK 3" FOR AIR GAP AT RIDGE (1/2" ON EACH SIDE). SEE WWW.TAMKO.COM FOR ADDITIONAL APPLICATION INSTRUCTIONS.
2. ARCHITECTURAL COMPOSITION SHINGLES OVER 30# FELT UNDERLAYMENT OVER TYPE CDX PLYWOOD ROOF DECK. REF: STRUCT FOR SIZE.
3. EAVE FLASHING, 4" END LAPS W/CONT. CAULK AT LAPS. SEE MANUF. INSTALLATION DETAILS.
4. MASONRY REGLET FLASHING - INSTALL ON ALL ROOF RAKES/SLOPES WHERE SHINGLES MEET BRICK. PAINTED BLACK.
5. PREFINISHED ALUMINUM GUTTER
6. CURVED WATER RESISTANT GYP. BD. WITH ORANGE PEEL FINISH PAINT SOFFIT.
7. STAMPED CONCRETE AT FRONT PORCH. SEE STRUCTURAL FOUNDATION PLANS AND SEE DETAILS ON A-1.
8. CDX EXT PLYWOOD SHEATHING, REF: STRUCT
9. 1" R-5 RIGID INSULATION BOARD, FOAMULAR 150 XPS W/FLASH-SEALR FOAM FLASHING TAPE.
10. AIR GAP
11. ALUMINUM OR VINYL SIDING OVER 2X8 WOOD FASCIA.
12. MDF RETURNS ON ALL WINDOWS.
13. 1/2" GYP. BD. W/MESH TAPE, OVER VAPOR BARRIER, ON 2X6 WOOD STUDS AT 16" O.C. WITH R-21 BATT INSULATION.
14. HOT DIPPED GALVANIZED MASONRY ANCHORS/WALL TIE BACKS @ 16" OC HORIZONTALLY MAX, AND 16" OC VERTICALLY MAX.
15. 2X6 BLOCKING NAILED TO TRUSSES TO CARRY SOFFIT.
16. CONTINUOUS VINYL SOFFIT VENTS- TYPICAL. KEEP INSULATION CLEAR FROM AIR FLOW.
17. 1 1/2" LIMESTONE VENEER OVER 4" CMU BLOCK BASE.
18. MORTAR DEFLECTION DEVICE.
19. PRECAST CONCRETE WATERTABLE OR SILL, REF: A-5.
20. 1 1/2" X 5 1/2" BRICK LEDGE WITH CONT. METAL DRIP EDGE FLASHING SET IN MASTIC OR SEALANT. METAL DRIP EDGE FLASHING TO EXTEND OVER THE TOP OF THE FOUNDATION INSULATION WHERE CONDITION EXISTS.
21. SCHEDULED BRICK, COLOR M-5.
22. 5/8" GYP. BD. W/MESH TAPE, CEILING OVER VAPOR BARRIER, ATTACHED TO TRUSS.
23. 2X WOOD BLOCKING/MALER.
24. UNFACED BATT INSULATION- R-48 MIN. 12" MIN THICK, TYP. ALL AREAS. INSUL. TO BE LIGHTING RATED.
25. WOOD TRUSSES, RE: STRUCTURAL
26. CONT. FLEXIBLE BASE FLASHING, EXTEND FROM MIN. 8" A.F.F. TO EDGE OF SLAB
27. ELECTRIC DRINKING FOUNTAINS, RE: PLUMB
28. SCHEDULED BRICK, COLOR M-5.
29. PRECAST CONCRETE KEYSTONE, SEE A-5.
30. SCHED. DOOR AND TRACK (BEYOND) TO EXTEND 13'-6" A.F.F.
31. SCHEDULED DOOR AND FRAME.
32. SCHEDULED WINDOW AND FRAME
33. PROVIDE WEEP HOLES/VENTS IN BOTTOM OF STONE/BRICK BASE COURSE, AND ABOVE MASONRY LITELS EVERY 24" O.C.
34. FINISH GRADE, MIN. 7 1/2" B.F.F. AT LANDSCAPE AREAS, REF: CIVIL
35. CONCRETE SLAB, REF: STRUCT
36. FOUNDATION WALL, REF: STRUCT. PROVIDE 2" R-10 RIGID FOAM BOARD INSULATION AROUND FOUNDATION PERIMETER
37. 5/8" SMOOTH PLYWOOD (SANDED) TO 7'-0" AFF AND 5/8" GYP. BD. W/MESH TAPE, FROM 7'-0" AFF TO CEILING - PROVIDE METAL TRANSITION BETWEEN FINISHES TO CREATE STRAIGHT EDGE - OVER VAPOR BARRIER, ON 2X8 WOOD STUDS AT 16" O.C. WITH R-21 BATT INSULATION.
38. CONT. FLEXIBLE WINDOW/DOOR FLASHING. USE FLASHING END DAMS AT EDGES OF OPENINGS.
39. 2 LAYERS 3/4" PLYWOOD CURVED TO MATCH ARCH, SECURED TO BRICK AND OFFICE WALL TO SUPPORT WOOD BLOCKING FOR PORCH CEILING FINISH.
40. PROTECT EXPOSED INSULATION WITH PORTLAND CEMENT STUCCO, COLOR TO MATCH MATERIAL AT BASE OF WALL.
41. 1 1/2" THIN BRICK VENEER, COLOR MATCH M-5
42. 4"X4"X1/4" GALV STEEL LINTEL. PAINTED WHITE
43. PROVIDE ICE SHIELD UNDERLAYMENT ON ROOF SHEATHING TO MIN. 24" INSIDE OF THE WARM IN WINTER SIDE OF EXTERIOR WALLS.
44. SOFFIT VENT BAFFLE
45. LIGHTED SIGNS - PROVIDE BLOCKING AND JUNCTION BOXES) AS RECOMMENDED IN THE APPROVED SIGNAGE PACKAGE. RE: EXTERIOR ELEVATIONS FOR MOUNTING HEIGHT.



4 WALL SECTION
SCALE: 3/4" = 1'-0"

3 WALL SECTION
SCALE: 3/4" = 1'-0"

2 WALL SECTION
SCALE: 3/4" = 1'-0"

1 WALL SECTION
SCALE: 3/4" = 1'-0"

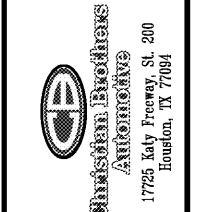
Order Plans @

WWW.LDIDLINE.COM



STEWART + REINDERSMA
ARCHITECTURE, PLLC

Christian Brothers
Automotive
5650 Peachtree Industrial Boulevard
Norcross, GA 30071



STATE OF GEORGIA
EXP. 6/30/18
MONIQUE REINDERSMA
REGISTERED ARCHITECT
12/18/2018
Date Signed

Revisions
2/26/18 - Prototype Update
11/26/18 - City Comments
Project No. 18-042
Drawn By:
Date: 12/18/18
Sheet Title:
WALL SECTIONS
Drawing No.

A-6
LH9N-09-2018