

360
STEWART REINHERM
ARCHITECTURE, PLLC
5450 E. High Street, Suite 200
Phoenix, Arizona 85054
P: 480.515.5123
www.sra360.com

Christian Brothers Automotive
5650 Peachtree Industrial Boulevard
Norcross, GA 30071



12/18/2018
Date Signed

Revisions

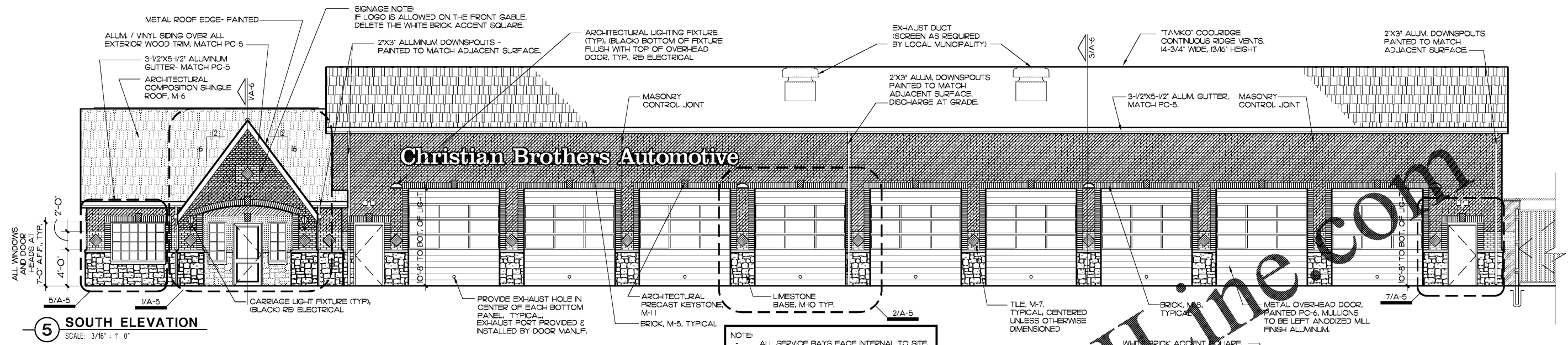
2/26/18 - Prototype Update
11/26/18 - City Comments

Project No. 18-042
Drawn By:
Date: 12/18/18

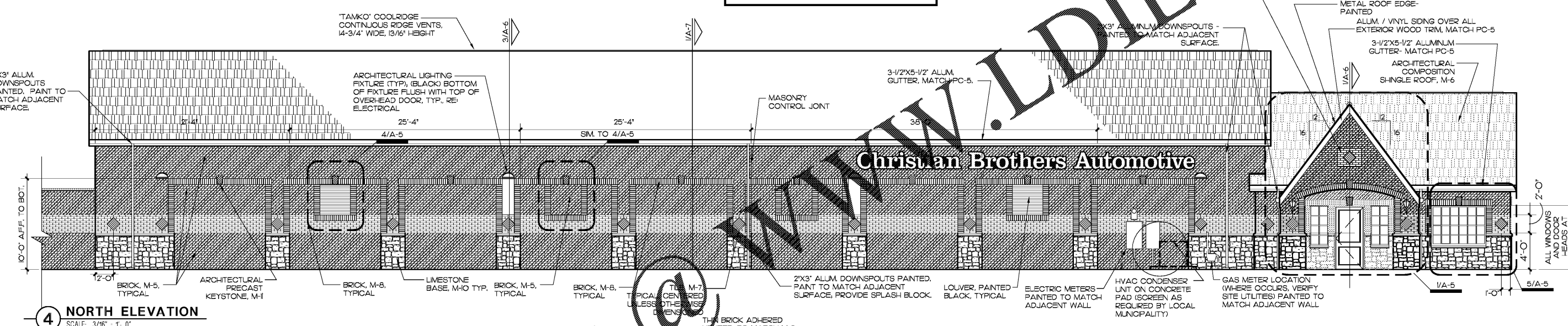
Sheet Title:
EXTERIOR ELEVATIONS (OPTION 1)

Drawing No.
A-4

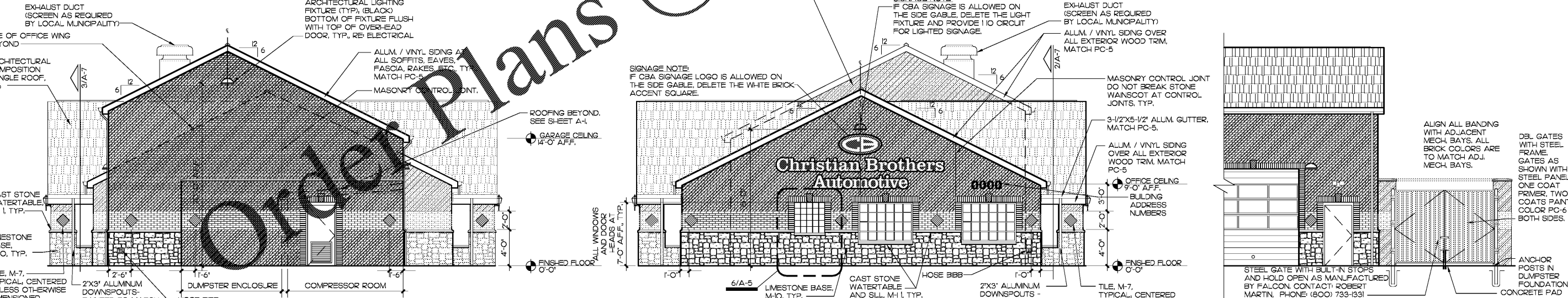
12/18/2018



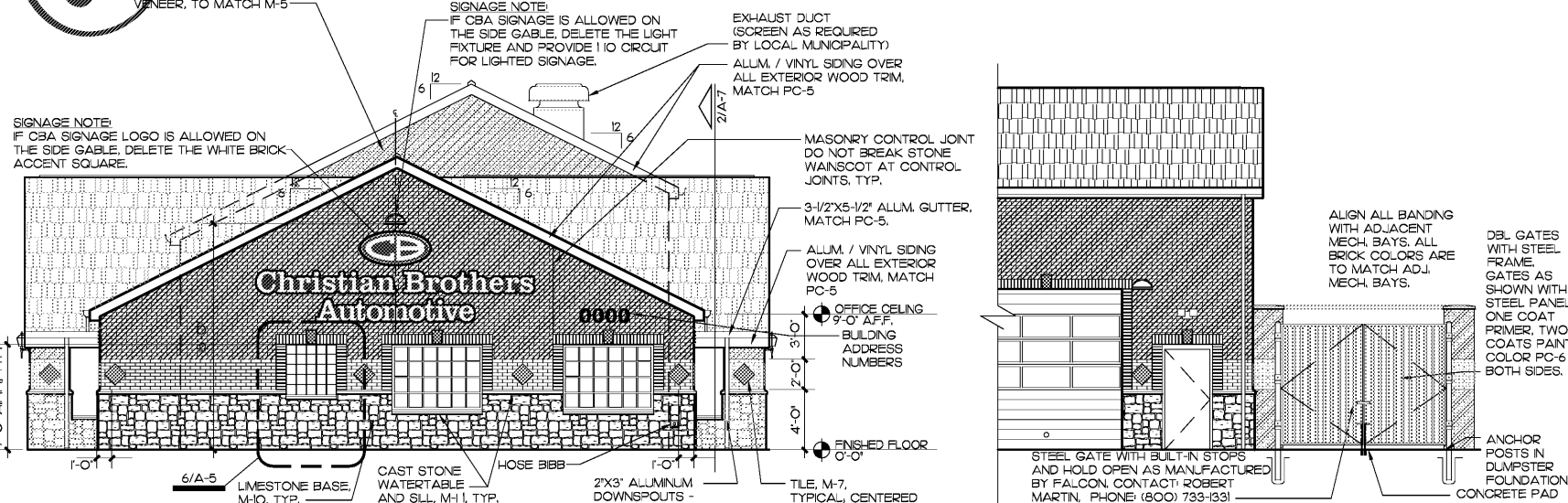
5 SOUTH ELEVATION
SCALE: 3/16" = 1'-0"



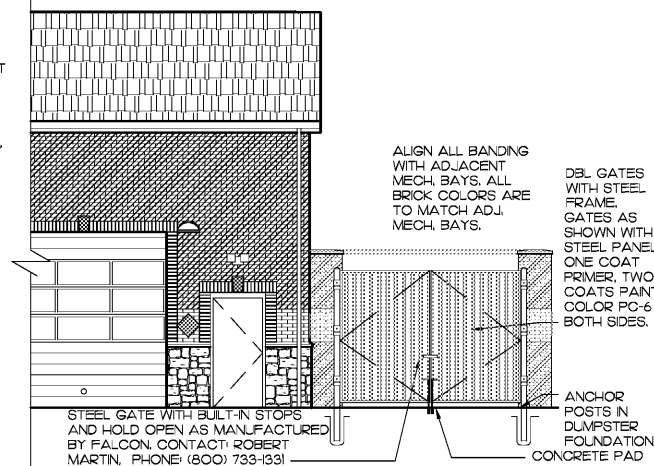
4 NORTH ELEVATION
SCALE: 3/16" = 1'-0"



3 EAST ELEVATION
SCALE: 3/16" = 1'-0"



2 WEST ELEVATION
SCALE: 3/16" = 1'-0"



1 DUMPSTER ENCLOSURE (SOUTH) ELEVATION
SCALE: 3/16" = 1'-0"

PC-5 PAINT	SEMI-GLOSS	SHERWIN WILLIAMS	MARSH-MALLOW SW 7001	M-5 BRICK	ACME BRICK CO., 8" NOM. 2 1/4" MODULAR BRICK, COLOR BURGUNDY, MORTAR COLOR 'CREAM'
PC-6 PAINT	SEMI-GLOSS	SHERWIN WILLIAMS	BLACK	M-6 COMPOSITION SHINGLE ROOF	CERTANTEED LANDMARK 30 AR. COLOR: 'HUNTER GREEN'
				M-7 MARBLE TILE MEDALLION	DAL-TILE M74H2 EMPRESS GREEN (POLISHED)
				M-8 BRICK	ACME BRICK CO., 8" NOM. 2 1/4" MODULAR BRICK, COLOR 'GLACIER WHITE, MORTAR COLOR 'CREAM'
				M-10 LIMESTONE	SIMULATED LIMESTONE VENEER, SUNSET STONE, STYLE LIMESTONE, COLOR 'ASH, MORTAR COLOR 'CREAM'
				M-11 CAST STONE	PRE-CAST STONE WATERTABLE AND SLL, COLOR WHITE, SEE A-5 FOR PROFILES

TYPICAL NOTES FOR ALL ELEVATIONS

1. 2'-0" BAND, JAMBS, HEADS OF DOORS AND WINDOWS, AND ACCENT IN GABLES AT ENTRY AND SIDE ELEVATIONS TO BE BRICK COLOR M-8.
2. ALL MASONRY SURFACES ARE TO BE SPRAYED WITH WATER-PROOFING SEALER, PROSOCO INC. BLOCK GUARD AND GRAFFITI CONTROL, #40029, P/N 800-285-4255
3. ALL DOWN SPOUTS ARE TO BE PAINTED TO MATCH THE COLOR OF THE WALL MATERIAL BEHIND IT.
4. ALL WOOD TRIM AT SOFFITS, EAVES, FASCIAS, RAKES, ETC. TO BE ALUMINUM OR VINYL SIDING OVER EXPOSED WOOD.
5. ALL EXTERIOR LIGHTS ARE TO BE ON PHOTO CELL, TYPICAL OF ALL ELEVATIONS.

- NOTES:
- ALL SIGNAGE TO BE REVIEWED AND APPROVED SEPARATELY.
 - HVAC AIR HANDLER IS LOCATED IN ATTIC. CONDENSER UNIT IS GROUND MOUNTED AS SHOWN. ALL ROOF PENETRATIONS ARE PAINTED BLACK.