

STEWART + REINBERGER  
ARCHITECTURE, PLLC

Christian Brothers  
Automotive

5650 Peachtree Industrial Boulevard  
Norcross, GA 30071



12/18/2018  
Date Signed

Revisions

2/26/18 - Prototype Update  
11/26/18 - City Comments

Project No. 18-042

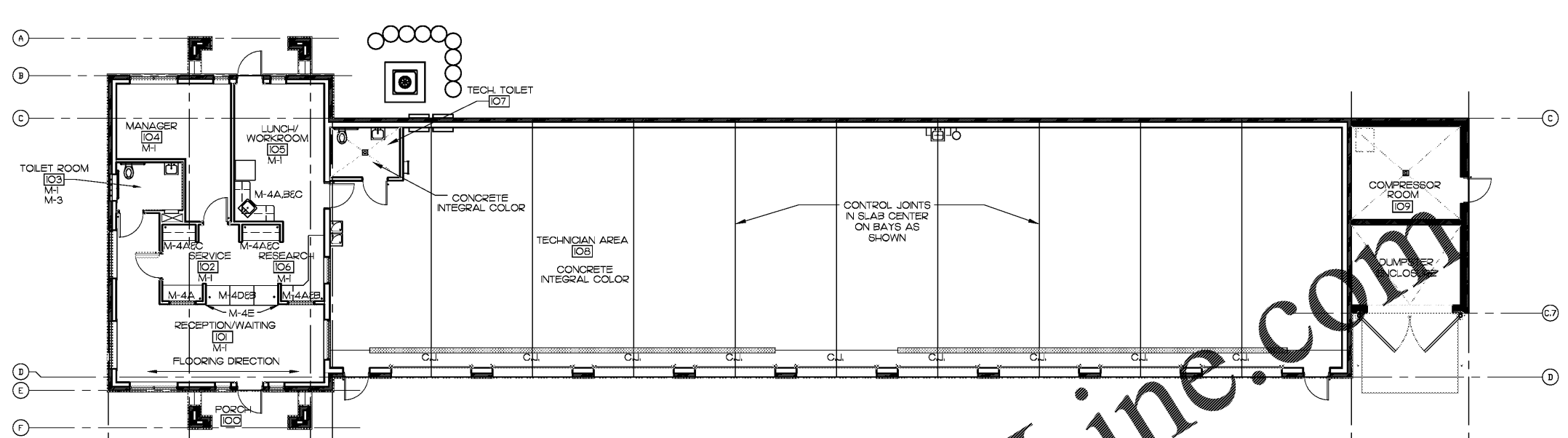
Drawn By:

Date: 12/18/18

Sheet Title:  
FINISH FLOOR PLAN  
AND SCHEDULES

Drawing No.

A-2.1  
LH9N-09-2018



**2 FINISH FLOOR PLAN**  
SCALE: 1/8" = 1'-0"

**ROOM FINISHES SCHEDULE**

RM. NO.	ROOM NAME	FLOOR	BASE	WALLS	CEILING	CLG HT.	REMARKS
100	PORCH	REFER 5/A-1	NONE	EXTERIOR ELEVATIONS	WATER RESISTANT GYP. BD. W/ ORANGE PEEL TEXTURE	VARES	CEILING TO BE PAINTED WHITE ORANGE PEEL TEXTURE. PAINT SEE 3/A-7
101	RECEPTION / WAITING	VINYL FLOOR	WOOD BASE- PAINTED	GYP. BD. PAINTED	GYP. BD. PAINTED	9'-0" A.F.F.	WANSKOT AND CROWN MOLDING- PAINTED PC-3 SEE A-10 FOR ELEVATIONS
102	SERVICE	VINYL FLOOR	VINYL BASE-	GYP. BD. PAINTED	GYP. BD. PAINTED	9'-0" A.F.F.	
103	RECEPT. TOILET ROOM	VINYL FLOOR	CERAMIC COVE BASE AND WALL TILE	WATER RESISTANT GYP. BD. PAINTED	WATER RESISTANT GYP. BD. PAINTED	9'-0" A.F.F.	RE A-10 FOR ELEVATIONS
104	MANAGER	VINYL FLOOR	WOOD BASE- PAINTED	GYP. BD. PAINTED	GYP. BD. PAINTED	9'-0" A.F.F.	WANSKOT AND CROWN MOLDING- PAINTED PC-3 SEE A-10 FOR ELEVATIONS
105	LUNCH / WORK ROOM	VINYL FLOOR	VINYL BASE-	GYP. BD. PAINTED	GYP. BD. PAINTED	9'-0" A.F.F.	WATER RESISTANT GYP. BD. ON WALL BEHIND SINK COUNTER TOP.
106	RESEARCH	VINYL FLOOR	VINYL BASE-	GYP. BD. PAINTED	GYP. BD. PAINTED	9'-0" A.F.F.	
107	TECH TOILET	INTERIOR COLORED CONCRETE FOUNDATION	VINYL BASE-	WATER RESISTANT GYP. BD. WHITE FR	WATER RESISTANT GYP. BD. PAINTED	8'-0" A.F.F.	
108	TECHNICIAN AREA	INTERIOR COLORED CONCRETE FOUNDATION	VINYL BASE-	WATER RESISTANT GYP. BD. WHITE FR	WATER RESISTANT GYP. BD. PAINTED	8'-0" A.F.F.	OWNER PAYS DIRECTLY FOR GARAGE FLOOR POLISH G.C. TO COORDINATE APPLICATION.
109	COMPRESSOR ROOM	INTERIOR COLORED CONCRETE FOUNDATION	NONE	OPEN TO STRUCTURE	WATER RESISTANT GYP. BD. PAINTED	14'-0" A.F.F.	

**PAINT AND MATERIALS**

MARK	AREA OR ELEMENT TO BE PAINTED	SHEEN COLOR	BENJAMIN MOORE	SHERWIN WILLIAMS	OTHER	REMARKS
PC-1	INTERIOR WALL ENTRY / DROP OFF	FLAT	STONE HEARTH 984			
PC-2	OFFICE INTERIOR WALLS, TOILET ROOM, LUNCH/WORK ROOM, SERVICE	SEMI-GLOSS	STONE HEARTH 984			
PC-3	WANSKOT AND ALL MOLDING	SEMI-GLOSS	BALOOLOTH		EXTERIOR READY MIX COLOR	TAPE AND FLOAT GYP. BD. SAND SMOOTH THEN PAINT TO GIVE THE APPEARANCE OF WOOD PANELING.
PC-4	EXTERIOR ORANGE PEEL	FLAT	WHITE			
PC-5	EXTERIOR FASCIA EPS KEYWAY	SEMI-GLOSS	LARGE REAR	MARSHMALLOW SW 7006		PRE-FINISHED/FACTORY FINISHED
PC-6	BAY DOORS & MASONRY PERPENDICULAR	SEMI-GLOSS	BLACK	BLACK		WORKROOM-TO-TECHNICIAN AREA DOOR, RESTROOM TO TECHNICIAN AREA DOOR, TECH FACTORY PRE-MIX BLACK.
PC-7	LUNCH AREA 108 WALL BELOW 7'-0" AFF.	HIGH-GLOSS	CHROME GREEN	HUNT CLUB SW 4468		
PC-8	ALL OFFICE CEILING & INTERIOR OFFICES - FLAT	SEMI-GLOSS	SUPER WHITE	EXTRA WHITE SW 7006		SEMI-GLOSS AT TECH AREA 108 ONLY. ALL OTHER AREAS ARE TO BE FLAT SHEEN.
PC-9	TECHNICIAN AREA 108 FLOOR	INTERIOR COLORED CONCRETE FOUNDATION				
PC-10	(NOT USED)					
PC-11	(NOT USED)					
PC-12	TECHNICIAN 108 WALL ABOVE 7'-0" AFF.	SEMI-GLOSS	SUPER WHITE	EXTRA WHITE SW 7006		
PC-13	DOWNSPOUT	SEMI-GLOSS				ALL DOWNSPOUTS ARE TO MATCH THE COLOR BEHIND THE DOWNSPOUT IN SOME CASES ONE DOWNSPOUT MAY REQUIRE 3 DIFFERENT COLORS.

M-1	VINYL FLOOR	MANUFACTURER CAL-VINYL	STYLE JAVA VINYL FLOORING	SIZE: 7 X 48	PATTERN: RUNNING BOND	FLOOR GROUT COLOR TO BE APPROVED BY CBAC
M-2	VINYL BASE	4" BASE, ROPPE-100 BLACK				
M-3	CERAMIC TILE BASE/WALL	DAL-TILE #K775, MATTE URBAN PUTTY 076	6X6 COVE BASE TILE, 6X6 FELD TILE FOR WALLS TO 4'-6" A.F.F. WITH BULLNOSE			ALL WALL GROUT IS TO BE ANTIQUE WHITE
M-4	PLASTIC LAMINATE ON CABINETS AND COUNTERTOPS	A - EXTERIOR UPPER CABINETS - WILSONART - GREY MATT FINSH 600-60 B - EXTERIOR LOWER CABINETS - WILSONART - SLATE GREY MATT FINSH 60-60 C - OFFICE COUNTERTOPS - WILSONART - SLATE GREY MATT FINSH 09-60 D - CUSTOMER COUNTERTOP - COLOR QUARTZ - STORM QUARTZ E - FRONT FACE OF CUSTOMER COUNTER - WILSONART - LIVEN HIGH GLOSS D427-01			INTERIOR- WHITE MELAMINE	FOR COLOR QUARTZ - CONTACT: RAMONE ALEJO PH: 281-628-4390 EMAIL: RAMONE@COLORQUARTZ.COM
M-5	BRICK	ACME BRICK CO. 6" NOM. 2 1/4" MODULAR BRICK, COLOR BURGUNDY				ALL BRICK SHALL BE SEALED W/ PROSOCCO #40093 BLOCK-GUARD & GRAFFITI CONTROL. USE DRYBLOCK N MORTAR MIX. INSTALL OVER PLTYWD AND ISLA FELT (PER MANUF. REC.)
M-6	ARCHITECTURAL COMPOSITION SHINGLES	CRISTANTEER LANDMARK 30 AR				
M-7	MARBLE TILE MEDALLION	DAL-TILE M741/2 EMPRESS GREEN (POLISHED)				
M-8	BRICK	ACME BRICK CO. 6" NOM. 2 1/4" MODULAR BRICK, COLOR GLACIER WHITE				ALL BRICK SHALL BE SEALED W/ PROSOCCO #40093 BLOCK-GUARD & GRAFFITI CONTROL. USE DRYBLOCK N MORTAR.
M-9	NOT USED					
M-10	SMULATED LIMESTONE VENEER	MANUFACTURED THIN LIMESTONE VENEER ADHERED TO 4" CMU BLOCK BASE	SUNSET STONE, STYLE LIMESTONE, COLOR ASA, MORTAR COLOR WHITE			
M-11	CAST STONE	PRE-CAST STONE WATERTABLE, 6" X 6" CAP COLOR WHITE. SEE A-5 FOR PROFILE				

**1 PAINT AND MATERIALS SCHEDULE**  
NO SCALE

NOTE: CONTACT DAL-TILE FOR PRICING CHARLIE JULI (713) 956-1900, C (214) 831-2952

NOTE: M-10 LIMESTONE VENEER AS SUPPLIED BY SALADO QUARRY - CONTACT: GARRETT DUKE PH: (254) 793-3355

INSTALL PER SALADO QUARRY RECOMMENDATIONS AND PER BUILDING STONE INSTITUTE RECOMMENDED PRACTICES

**DOOR SCHEDULE**

DR. TYP.	WIDTH	HEIGHT	DR. TYPE	FR. TYPE	HEAD	JAMB	SILL	LOCATION (FROM / TO)	REMARKS
1	10'-0"	10'-8"	AI	MASONRY	10/A-9	5/A-9	1/A-9	TECHNICIAN AREA TO EXTERIOR	PROVIDE ELEVATION TRACKS TO LIFT DOORS TO 13'-6" A.F.F.
2	3'-0"	6'-8"	B1A	4" HM. HEAD	17/A-9	16/A-9	16/A-9	TECHNICIAN AREA TO EXTERIOR	PROVIDE DRIP CAP AT TOP OF DOOR FRAME.
3	3'-0"	6'-8"	C1	4" HM. HEAD	24/A-9	24/A-9	2/A-9	LUNCH ROOM TO TECHNICIAN AREA	TEMPERED SAFETY GLAZING
4	3'-0"	7'-0"	D1	MASONITE	12/A-9	7/A-9	3/A-9	RESTROOM TO RECEPTION/WAITING	NO SIGNAGE ON DOOR, SEE 5/A-10 FOR SIGNAGE DETAIL
5	3'-0"	7'-0"	E1	MASONITE	12/A-9	9/A-9	4/A-9	SERVICE TO RECEPTION/WAITING	DUTCH DOOR
6	3'-0"	6'-10"	F1	HM.	22/A-9	23/A-9	-	RECEPTION/WAITING TO EXTERIOR	MAL SLOT IN DOOR PROVIDE DEADBOLT. CAULK UNDER FRONT THRESHOLD. FLOORING, TEMPERED SAFETY GLAZING.
7	3'-0"	6'-8"	B1A	4" HM. HEAD	18/A-9	18/A-9	14/A-9	RESTROOM TO TECHNICIAN AREA	NO SIGNAGE ON DOOR, SEE 5/A-10 FOR SIGNAGE DETAIL
8	3'-0"	7'-0"	D1	MASONITE	12/A-9	8/A-9	13/A-9	MANAGER TO SERVICE	
9	3'-0"	6'-8"	B1B	4" HM. HEAD	11/A-9	6/A-9	5/A-9	COMPRESSOR ROOM TO EXTERIOR	PROVIDE DRIP CAP AT TOP OF DOOR FRAME. NOTE ROOF SLOPE & VERIFY ROOF DOOR HT. • COMPRESSOR

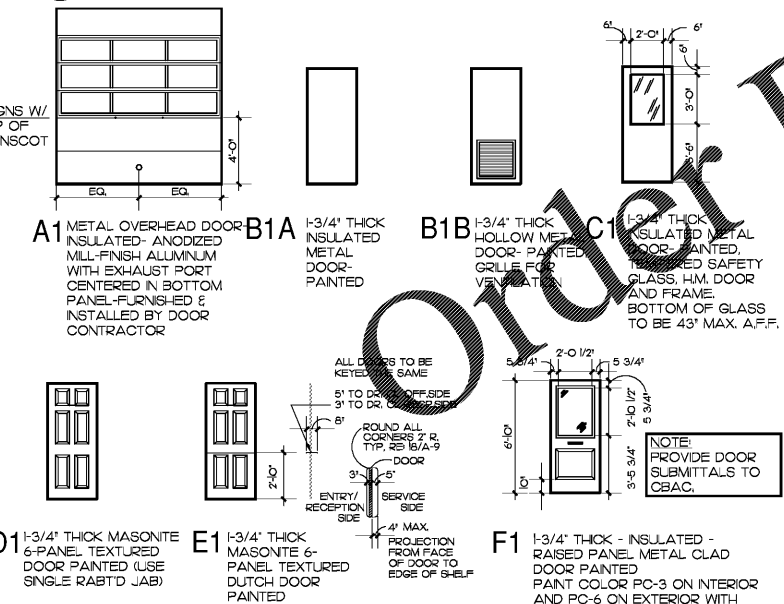
DOOR HARDWARE SETS (REF A-2 FOR HARDWARE SPECIFICATIONS) ALL HARDWARE FINISHES TO BE BRUSHED CHROME- US26D

- METAL OVER-HEAD DOOR INSULATED (EXTERIOR FROM TECHNICIAN AREA) STANDARD OVER-HEAD DOOR HARDWARE WITH EXTENSION TRACKS TO LIFT DOOR 13'-6" ABOVE FINISHED FLOOR  
1 EACH- BRUSH TYPE WEATHER SEAL (DS-5)
- INSULATED METAL DOOR (EXTERIOR FROM TECHNICIAN AREA)  
H/2 PAIRS- BUTTS (B-1)  
1 EACH- LOCK SET (L-1)  
1 EACH- SECURITY BAR (M-1)  
1 EACH- WEATHER SEAL (DS-1)  
1 EACH- DOOR SWEEP (DS-2)  
1 EACH- THRESHOLD (DS-3)  
1 EACH- DRIP CAP ON FRAME ABOVE DOOR  
1 EACH- FLOOR STOP (S-1)  
1 EACH- DOOR SECURITY PLATE
- INSULATED METAL DOOR (TECHNICIAN AREA FROM LUNCH/WORK AREA)  
H/2 PAIRS- BUTTS (B-2)  
1 EACH- LATCH-SET (PASSAGE) (L-2)  
1 EACH- CLOSER (C-1)  
1 EACH- WEATHER SEAL (DS-1)  
1 EACH- DOOR SWEEP (DS-2)  
1 EACH- THRESHOLD (DS-3)  
1 EACH- DRIP CAP ON FRAME ABOVE DOOR  
1 EACH- FLOOR STOP (S-1)  
1 EACH- DOOR SECURITY PLATE
- MASONITE DOOR (RECEPTION FROM OFFICE TOILET ROOM)  
H/2 PAIR- BUTTS (B-2)  
1 EACH- LATCH-SET (PASSAGE) (L-2)  
1 EACH- CLOSER (C-1)  
1 EACH- WEATHER SEAL (DS-1)  
1 EACH- DOOR SWEEP (DS-2)  
1 EACH- THRESHOLD (DS-3)  
1 EACH- DRIP CAP ON FRAME ABOVE DOOR  
1 EACH- FLOOR STOP (S-1)  
1 EACH- DOOR SECURITY PLATE
- DUTCH MASONITE DOOR (RECEPTION FROM OFFICE)  
1 PAIR- BUTTS ON BOTTOM LEAF (B-3)  
1 PAIRS- BUTTS (B-2)  
1 EACH- LOCKSET (PRIVACY) (L-3)  
1 EACH- SLIDE BOLT (S-2)  
1 EACH- FLOOR MOUNTED STOP (S-1)
- METAL CLAD DOOR INSULATED (EXTERIOR FROM RECEPTION/WAITING)  
H/2 PAIR- BUTTS (B-1)  
1 EACH- LATCH-SET (PASSAGE) (L-2)  
1 EACH- DEAD BOLT (L-5)  
(1) LATCH RETURN ON INTERIOR, KEYED ON EXTERIOR  
1 EACH- CLOSER (C-1)  
1 EACH- WEATHER SEAL (DS-1)  
1 EACH- THRESHOLD (DS-3)  
1 EACH- MAIL SLOT AND MAIL SLOT HOOD (S-3)  
1 EACH- DOOR SWEEP (DS-2)  
1 EACH- DOOR SECURITY PLATE
- INSULATED METAL DOOR (TECHNICIAN AREA FROM TECH TOILET)  
H/2 PAIR- BUTTS (B-2)  
1 EACH- CLOSER (C-1)  
1 EACH- LOCK SET (PRIVACY) (L-3)  
1 EACH- DOOR SWEEP (DS-2)  
1 EACH- FLOOR MOUNTED STOP (S-1)  
1 EACH- 3/8" BLACK FOAM DOOR SEAL AROUND JAMB.
- MASONITE DOOR (MANAGER TO SERVICE)  
H/2 PAIR- BUTTS (B-3)  
1 EACH- LOCK SET (L-4)  
1 EACH- FLOOR MOUNTED STOP (S-1)
- HOLLOW METAL DOOR (EXTERIOR FROM COMPRESSOR ROOM)  
H/2 PAIRS- BUTTS (B-1)  
1 EACH- LOCKSET (L-1)  
1 EACH- WEATHER SEAL (DS-1)  
1 EACH- DOOR SWEEP (DS-2)  
1 EACH- THRESHOLD (DS-3)  
1 EACH- DRIP CAP ON FRAME ABOVE DOOR  
1 EACH- FLOOR STOP (S-1)  
1 EACH- DOOR SECURITY PLATE  
1 EACH- FLOOR MOUNTED STOP (S-1)

**5 DOOR HARDWARE SCHEDULE**  
NO SCALE

- ALL HARDWARE BY SPECIFIED MANUFACTURER - NO SUBSTITUTIONS
- HINGES- HAGER, MCKINNEY  
B-1- HINGES BB1279 4-1/2 X 4 US26D X NRP  
B-2- HINGES BB1279 4-1/2 X 4 US26D  
B-3- HINGES 1279 4-1/2 X 4 US26D
- LOOKSET- SARGENT, SCHLAGE  
L-1- LOCKSET LOGO5LL US26D  
L-2- LATCH-SET 65J5LL US26D  
L-3- PRIVACY 65605LL US26D  
L-4- LOCKSET 65605LL US26D  
L-5- DEADLOCK 485 US26D
- DOOR CLOSERS- SARGENT, NORTON  
C-1- DOOR CLOSER EN350-P9 HEAVY DUTY
- MISCELLANEOUS - EXIT SECURITY INC.  
M-1- SECURITY BAR MODEL NO. SB-O-0036 BAR MOUNTED TO WALL DURING BUSINESS HOURS, SEE A-5.
- DOOR SEAL- NATIONAL GUARD PRODUCTS, PENKO  
DS-1- WEATHERSTRIPPING 160VA ALUM.  
DS-2- DOOR SWEEP 101VA ALUM.  
DS-3- THRESHOLD 896V ALUM.  
DS-4- DOOR BOTTOM SEAL 220NA ALUM.  
DS-5- GARAGE DOOR WEATHER STRIPPING D45 X CLA 16 BL BRUSH TYPE
- DOOR TRIM- TRIMCO, HAGER  
S-1- DOOR STOP 1233ES US26D  
S-2- SLIDE BOLT 3920-4 US26D  
S-3- MAIL SLOT 2085 US26D W/ HOODED FRONT PLATE AND BACK PLATE

**4 HARDWARE SPECIFICATIONS**  
NO SCALE



**3 DOOR TYPES**  
NO SCALE

NOTE: G.C. TO REKEY THE BUILDING WITH A SINGLE KEY FOR ALL EXTERIOR DOORS AND A SEPARATE KEY FOR THE MANAGER'S OFFICE TWO WEEKS PRIOR TO STORE OPENING.

DOOR NOTE: OVER-HEAD DOORS ARE FURNISHED BY THE OWNER FROM CLOPLAY BUILDING PRODUCTS, AND INSTALLATION IS COORDINATED BY THE G.C. CONTACT: NATIONAL ACCOUNTS PH: (800) 526-4301 OPTION 5 EMAIL: CS@CLOPLAY.COM

DOOR & HARDWARE NOTE: ALL DOORS, FRAMES AND HARDWARE TO BE PURCHASED FROM NATIONAL COOK AND BOARDMAN CONTACT: MIKE DONNELLY PHONE: 615-964-6000 EXT. 4523 EMAIL: MDONNELLY@COOKANBOARDMAN.COM