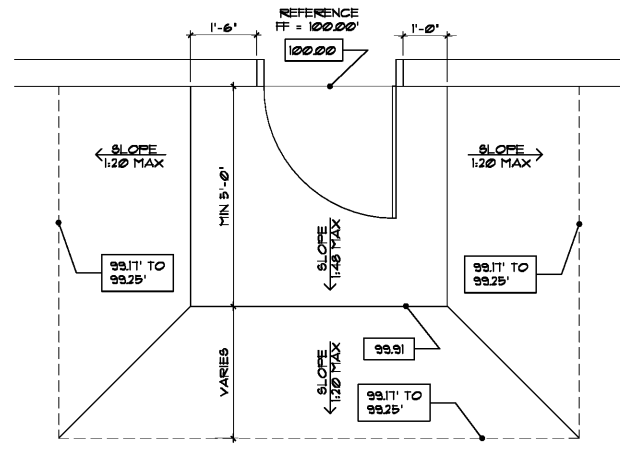
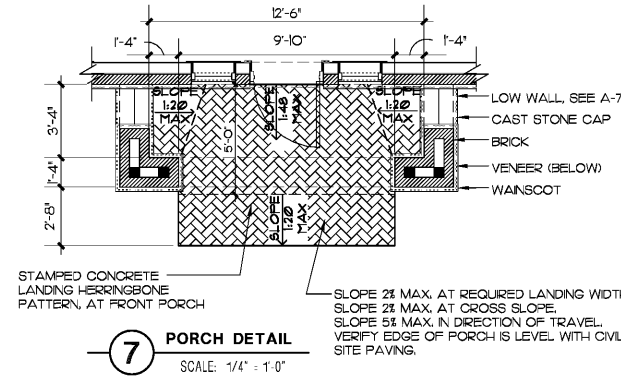


NOTE:  
 1. REF. CIVIL FOR SITE PAVEMENT ELEV. PRIOR TO BEGINNING WARP UP TO DOOR.  
 2. PAVING TO WARP UP WITHOUT BEAMS TO ACHIEVE REQUIRED SLOPES.



8 LANDING AT MAN DOOR DETAIL  
 SCALE: 1/2" = 1'-0"



7 PORCH DETAIL  
 SCALE: 1/4" = 1'-0"

GENERAL NOTES

1. BASE INFORMATION WAS TAKEN FROM PROPERTY DESCRIPTION PLANS ON THIS PAGE. MINOR FIELD ADJUSTMENTS MAY BE NECESSARY TO ALIGN WITH EXISTING FEATURES.
2. SMOOTH TRANSITION IS REQUIRED BETWEEN ALL EXISTING AND NEW PAVEMENTS.
3. ROADWAY AND ACCESS CLEARANCES ARE SHOWN TO FACE OF CURB AND END OF PARKING SPACES. ALL PARKING SPACES ARE AS SHOWN BY CIVIL.
4. THE CONTRACTOR IS TO VERIFY THE EXACT LOCATION OF ALL UTILITIES. TAKE CARE TO PROTECT UTILITIES THAT ARE TO REMAIN. REPAIR ANY DAMAGED IN COMPLIANCE WITH LOCAL STANDARDS AND AT THE CONTRACTOR'S EXPENSE. COORDINATE ALL CONSTRUCTION WITH THE APPROPRIATE UTILITY COMPANY.
5. THE LIGHTING ON THE SITE SHALL COMPLY WITH THE LOCAL ZONING ORDINANCE AND STATE ENERGY CODE AS REQUIRED.
6. THE DUMPSTER IS TO BE ENCLOSED WITH MASONRY WALLS TO MATCH THE BUILDING EXTERIOR. THE ENCLOSURE GATES SHALL BE OPAQUE AND CONSTRUCTED OF PAINTED STEEL FRAME AND STEEL PANELS. SEE A-4 FOR MORE INFORMATION ON DUMPSTER ENCLOSURE AND BUILDING EXTERIOR.
7. ALL OFF SITE EASEMENTS MUST BE FILED PRIOR TO START OF CONSTRUCTION.
8. IRRIGATION SYSTEM SHALL BE PROVIDED AND INCLUDED IN THE BASE BID. THE REQUIRED AUTOMATIC UNDERGROUND SPRINKLER SYSTEM SHALL HAVE SEPARATE ZONES FOR LAWN AND PLANT BEDDING AREAS. LAYOUT PER THE MANUFACTURER'S REQUIREMENTS WITH OWNERS APPROVAL REQUIRED.

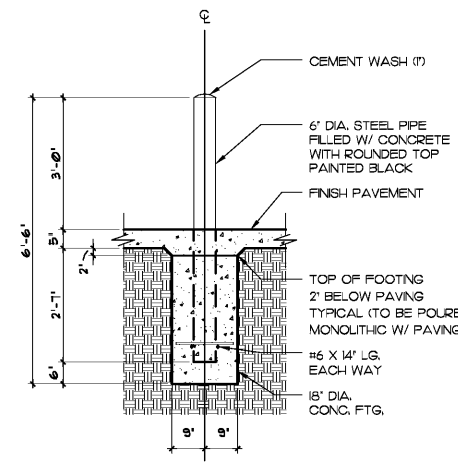
DRIVEWAY CURB AND PAVING NOTES

1. CIVIL ENGINEERING DRAWING SUPERSEDES INFORMATION ON THIS DRAWING. NOTIFY ARCHITECT AND OWNER OF ALL DISCREPANCIES.
2. SIDEWALK, DRIVEWAY, CURB, AND LAND GRADE SHALL BE SET BY CIVIL ENGINEER.
3. SIDEWALKS SHALL BE CONSTRUCTED PER GEOTECHNICAL REPORT AND CIVIL DRAWINGS.
4. DRIVEWAYS SHALL BE CONSTRUCTED PER GEOTECHNICAL REPORT AND CIVIL DRAWINGS.
5. CURB AND GUTTER SHALL BE CONSTRUCTED PER GEOTECHNICAL REPORT AND CIVIL DRAWINGS.
6. PROVIDE EXPANSION MATERIAL AT INTERVALS OF 20'-0" (MAXIMUM) THROUGHOUT ENTIRE LENGTH OF SIDEWALK.
7. PROVIDE 1/2" EXPANSION MATERIAL BETWEEN WHERE SIDEWALKS ABUT TO A FIRE HYDRANT OR UTILITY POLE.
8. IN THE EVENT THAT MORE THAN ONE DRIVEWAY IS CONSTRUCTED FOR ACCESSING THE PROPERTY FROM THE SAME STREET APPROACH, MAINTAIN MINIMUM SEPARATION BETWEEN DRIVES AS REQUIRED BY LOCAL ZONING ORDINANCE, TRAFFIC AND TRANSPORTATION REGULATIONS, AND/OR BUILDING CODE.
9. SURFACE BETWEEN DRIVEWAYS, FROM TOP OF CURB TO SIDEWALK AND FROM SIDEWALK TO PROPERTY LINE MAY BE EITHER CONCRETE OR DIRT, OR AS REQUIRED BY ORDINANCE AND CODES AS MADE REFERENCE TO IN #8 ABOVE.

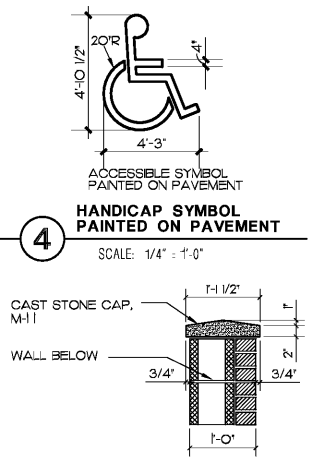
BOLLARD TO BE PAINTED WITH RUST PROOF PAINT, 2 COATS BEFORE INSTALLATION, 1 COAT AFTER INSTALLATION, COLOR TO BE BLACK.



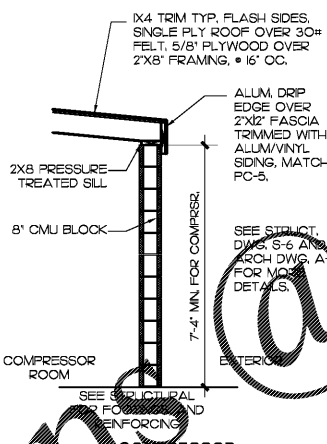
4 HANDICAP SYMBOL PAINTED ON PAVEMENT  
 SCALE: 1/4" = 1'-0"



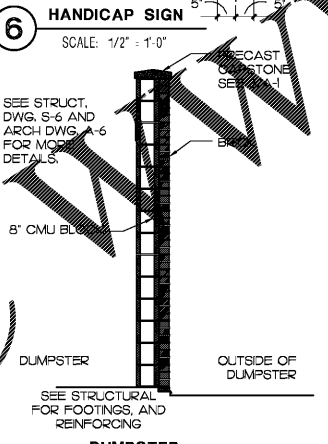
5 STEEL PIPE BOLLARD  
 SCALE: 1/2" = 1'-0"



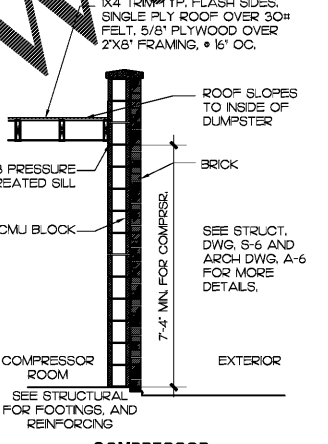
3 CAST STONE CAP DETAIL  
 SCALE: 3/4" = 1'-0"



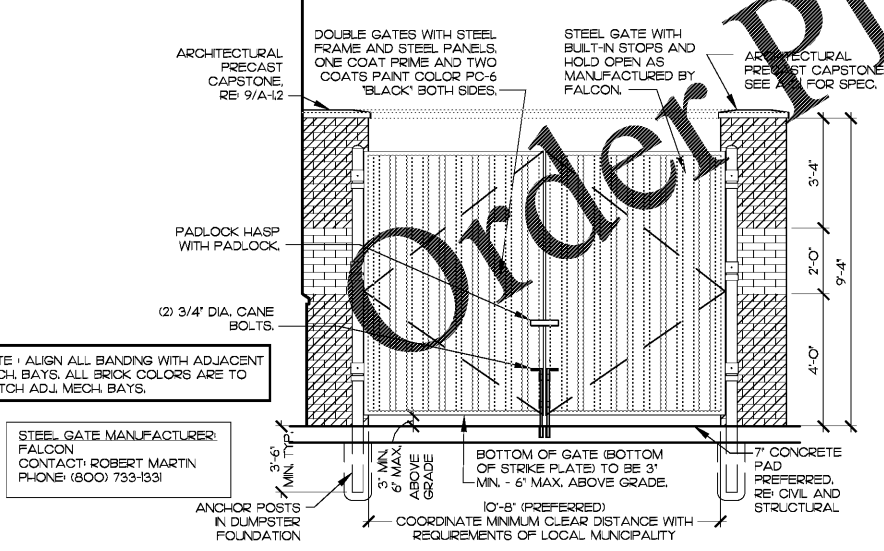
2C COMPRESSOR ROOM WALL SECTION  
 SCALE: 3/8" = 1'-0"



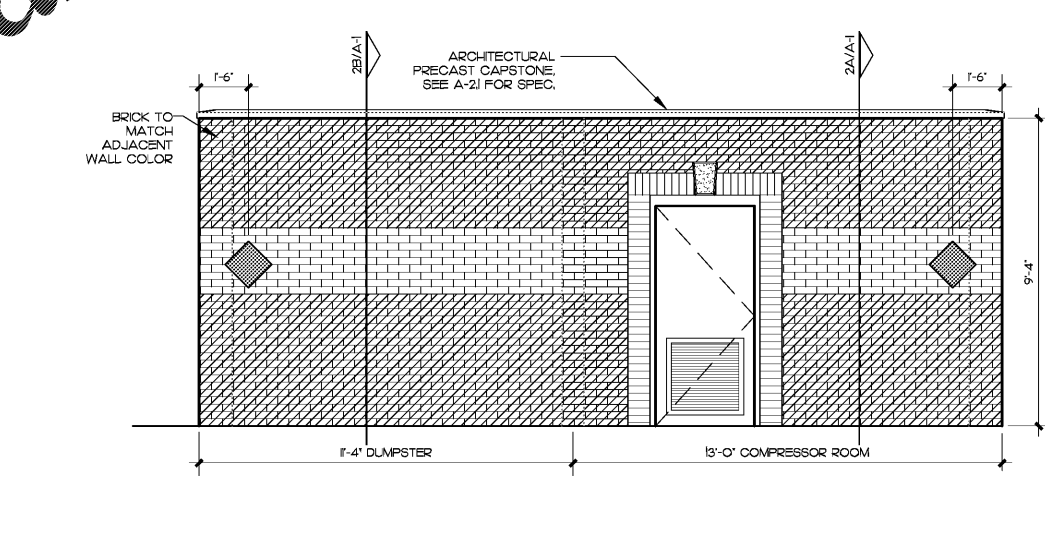
2B DUMPSTER ENCLOSURE WALL SECTION  
 SCALE: 3/8" = 1'-0"



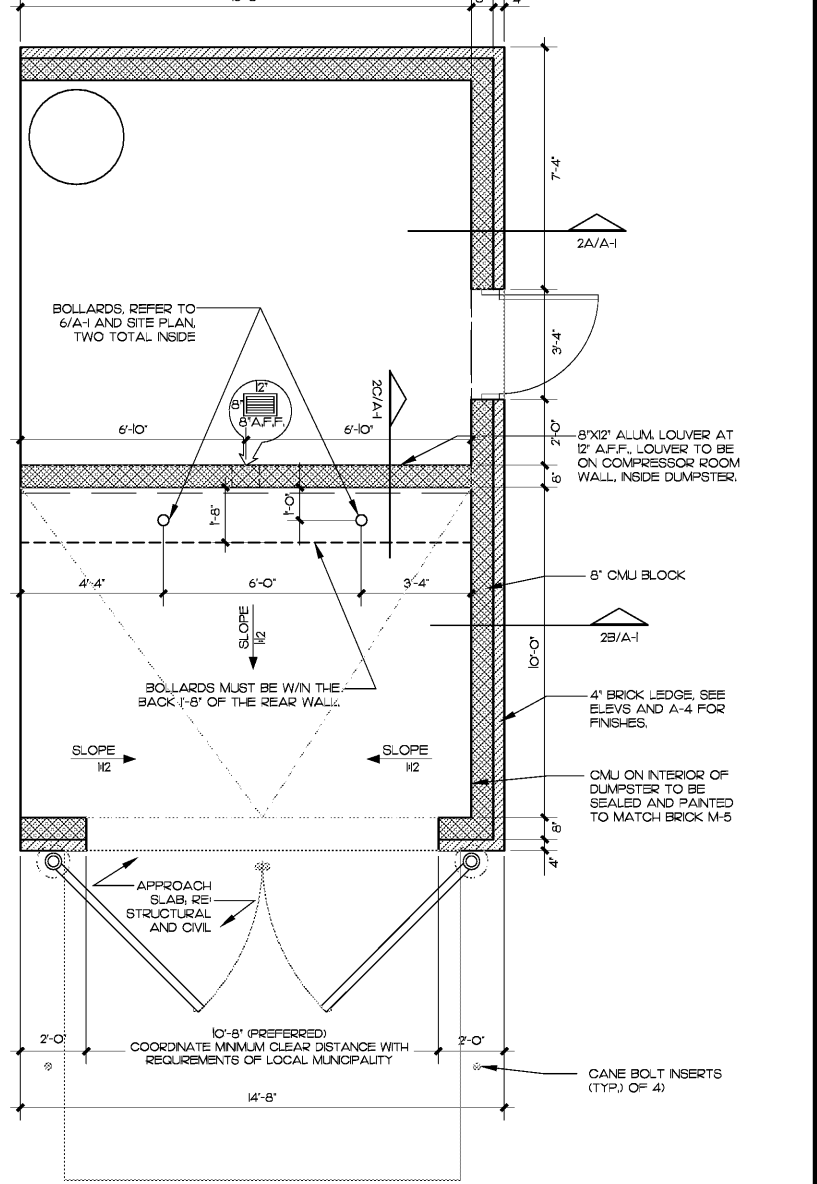
2A COMPRESSOR ROOM WALL SECTION  
 SCALE: 3/8" = 1'-0"



1C DUMPSTER ENCLOSURE ELEVATION  
 SCALE: 3/8" = 1'-0"



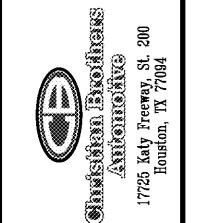
1B DUMPSTER ENCLOSURE AND COMPRESSOR ROOM ELEVATION  
 SCALE: 3/8" = 1'-0"



1A DUMPSTER ENCLOSURE AND COMPRESSOR ROOM PLAN  
 SCALE: 3/8" = 1'-0"



Christian Brothers Automotive  
 5650 Peachtree Industrial Boulevard  
 Norcross, GA 30071



12/8/2018  
 Date Signed

Revisions  
 2/26/18 - Prototype Update  
 11/26/18 - City Comments

Project No. 18-042  
 Drawn By:  
 Date: 12/18/18  
 Sheet Title:

SITE DETAILS  
 Drawing No.  
 A-1  
 LH9N-09-2018