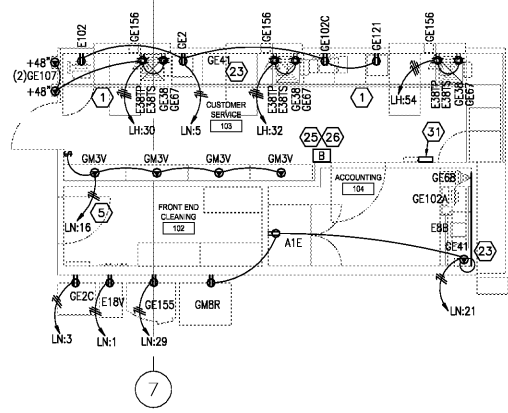
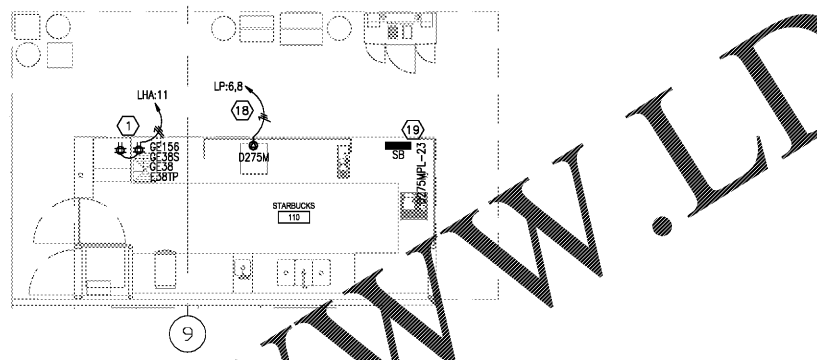


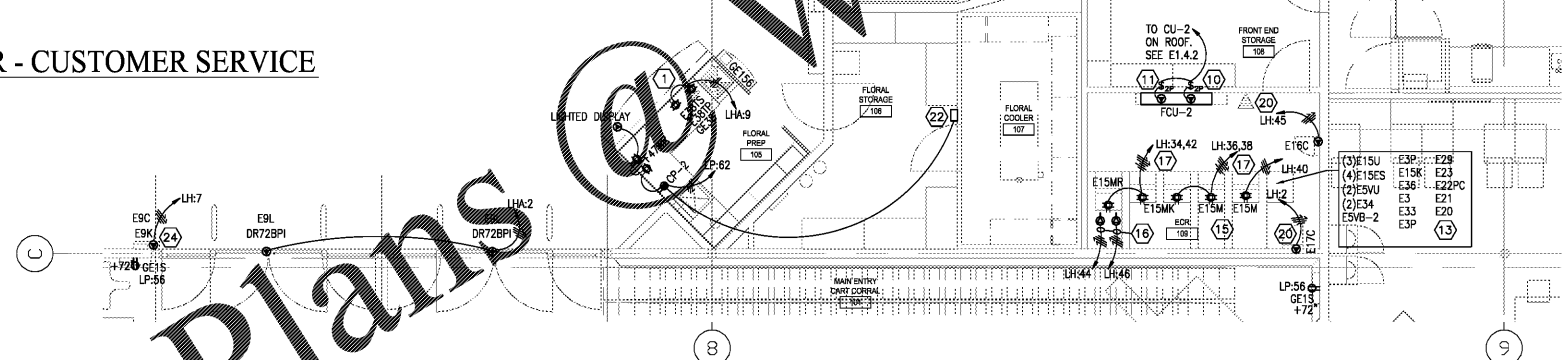
01 ENLARGED POWER - PHARMACY  
SCALE: 1/4" = 1'-0"



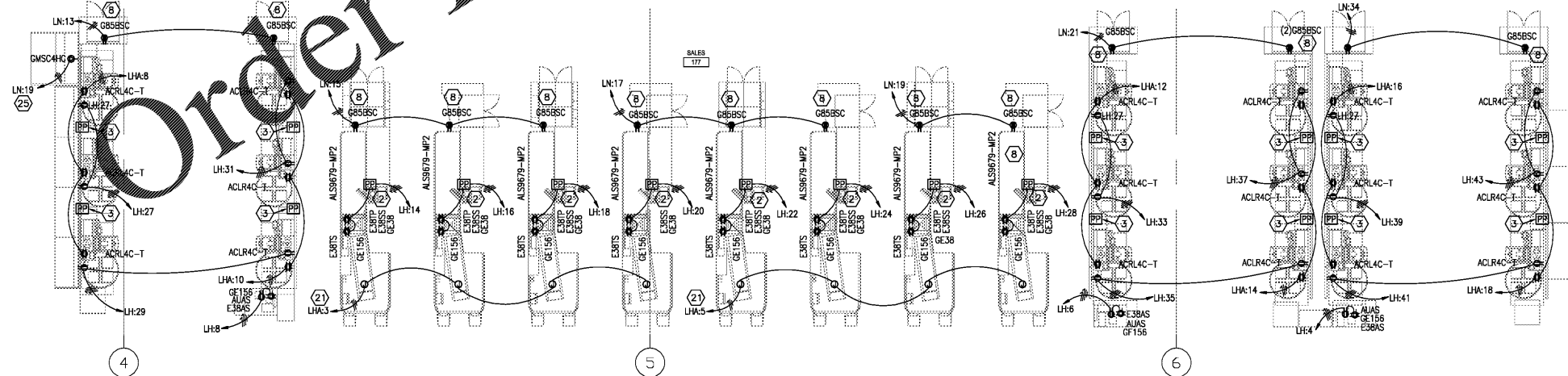
02 ENLARGED POWER - CUSTOMER SERVICE  
SCALE: 1/4" = 1'-0"



04 ENLARGED POWER - STARBUCKS  
SCALE: 1/4" = 1'-0"



05 ENLARGED POWER - ECR ROOM/ FLORAL  
SCALE: 1/4" = 1'-0"



03 ENLARGED POWER - CHECKLANES  
SCALE: 1/4" = 1'-0"

GENERAL NOTES

- SEE SHEET E0.1 FOR PROJECT GENERAL NOTES AND LEGEND.
- SEE SHEET E6.1 FOR ELECTRICAL EQUIPMENT SCHEDULE.
- SEE E6.1.1 FOR REFRIGERATION EQUIPMENT SCHEDULE.
- REFER TO E1.3.3 AND E1.3.4 FOR REFRIGERATED CASES, FANS, LIGHTS AND ANTI-SWEAT CIRCUITING INFORMATION.
- CIRCUIT NUMBERS FOR EXISTING PANELS ARE BASED ON AS-BUILT DRAWING INFORMATION AND MAY BE AT VARIANCE WITH ACTUAL CONDITIONS. FIELD INVESTIGATE CIRCUITING AND MAKE ADJUSTMENTS TO CIRCUIT ASSIGNMENTS IN THE PANEL AS REQUIRED. CONNECT TO EXISTING BREAKERS IN THE PANEL AS THEY BECOME AVAILABLE DURING DEMOLITION. ALL HOMERUNS TO EXISTING PANELS ARE TO SPARE BREAKERS OR EXISTING BREAKERS MADE AVAILABLE BY DEMOLITION U.O.I.
- ALL EXISTING PANELBOARD, TRANSFORMERS, SWITCHES AND SWITCHBOARDS ARE SHAVED GRAY. ALL NEW PANELBOARD, TRANSFORMERS, SWITCHES AND SWITCHBOARDS ARE SHAVED BLACK AND/OR OTHERWISE NOTED.
- INCLUDE IN THE SCOPE OF WORK, TEMPORARY SERVICES FOR EXISTING EQUIPMENT, DEVICES AND OWNER'S EQUIPMENT THAT MUST BE TEMPORARILY RELOCATED DUE TO CONSTRUCTION PHASING. CONSIDER MOVING OWNER'S EQUIPMENT SUCH AS CHECKSTANDS, REFRIGERATED CASES, LIGHTED VALANCES ETC. TWICE. SEE THE PHASING PLAN AND COORDINATE WITH OWNER'S PROJECT MANAGER.
- COORDINATE THE EXACT LOCATIONS OF ALL EQUIPMENT WITH THE OWNERS PROJECT MANAGER AND INSTALL PER THE REQUIREMENTS OF THE RESPECTIVE EQUIPMENT SUPPLIER/INSTALLER.
- CONTRACTOR TO ALLOW FOR ELECTRICAL CONNECTION/HOOK UP OF ALL HVAC, REFRIGERATION, KITCHEN AND OTHER ELECTRICALLY OPERATED EQUIPMENT SHOWN ON THE DRAWINGS.
- THE GENERAL CONTRACTOR SHALL MAINTAIN POWER TO ALL NEW AND EXISTING OPERATIONAL EQUIPMENT AT ALL TIMES DURING CONSTRUCTION. THE CONTRACTOR SHALL ALLOW FOR TEMPORARY WORKS AS AND WHERE NECESSARY.
- ALL ELECTRICAL CONDUITS IN THE SALES AREA DESCENDING FROM ROOF TRIMMING EITHER LOW WALLS OR EQUIPMENT SHOULD BE COORDINATED TOGETHER WITH OTHER MECHANICAL PIPES.
- SEE SINGLE LINE DIAGRAM ON SHEET E6.2 FOR SIZE OF DISCONNECT SWITCHES.
- SEE ESD-26 FOR WIRING METHODS IN WALK-IN REFRIGERATORS, FREEZERS, AND PREP AREAS.
- SEE MECHANICAL DRAWINGS FOR LOCATIONS OF TEMPERATURE AND HUMIDITY SENSORS.
- PROVIDE WEATHERPROOF BOXES AND LIQUID-TIGHT FLEXIBLE CONDUIT TO CASES IN OR IMMEDIATELY ADJACENT TO WASHDOWN AREAS SUCH AS SEAFOOD PREP, MEAT PREP, DELI AND BAKERY PREP AREAS.
- WHERE ELECTRICAL SERVICE FEEDERS CROSS THROUGH WALLS, CONTRACTOR TO COORDINATE WITH MECHANICAL DRAWINGS.
- ALL APPLIANCE DISCONNECTS ARE TO BE MOUNTED AT 5'-0" A.F.F. UNLESS OTHERWISE INDICATED.
- WEATHERPROOF BOXES AND LIQUID-TIGHT FLEXIBLE CONDUIT TO CASES IN OR IMMEDIATELY ADJACENT TO WASHDOWN AREAS SUCH AS SEAFOOD PREP, MEAT PREP, DELI AND BAKERY PREP AREAS.
- MINIMUM BRANCH CIRCUIT WIRE SIZE SHALL BE #12. INCREASE WIRE SIZE AS REQUIRED TO PROVIDE 5 PERCENT VOLTAGE DROP TO THE EQUIPMENT OR LAST DEVICE ON THE CIRCUIT. WHERE INCREASED WIRE SIZE WILL NOT FIT IN THE TERMINALS OR LUGS OF THE EQUIPMENT OR DEVICE, PROVIDE DIGITALS TO REDUCE TO #12. PROVIDE ANY JUNCTION BOXES AS REQUIRED.

KEYNOTES

- RUN CONDUITS CONCEALED IN MILLWORK. COORDINATE WITH MILLWORK INSTALLER. COORDINATE WITH OWNER'S PROJECT MANAGER FOR PLACEMENT OF RECEPTACLES AND ROUTING OF CONDUIT PRIOR TO ROUGH IN.
- PROVIDE NEW POWER POLE FOR CHECKSTAND. REFER TO DETAIL ESD-62 FOR INSTALLATION. INSTALL AND CONNECT ILLUMINATED CHECK LANE # SIGN ON POLE. CONFIRM POWER POLE LOCATIONS WITH OWNER'S PROJECT MANAGER. COORDINATE WITH HVAC DUCTING AND PROVIDE TRAPEZOIDAL BRACES SUSPENDED UNDER THE DUCT TO MOUNT THE POLE TOP AS REQUIRED.
- PROVIDE NEW POWER POLE FOR SELF CHECKSTAND(S). REFER TO DETAIL ESD-62A FOR INSTALLATION. INSTALL AND CONNECT ILLUMINATED CHECK LANE # SIGN ON POLE. CONFIRM POWER POLE LOCATIONS WITH OWNER'S PROJECT MANAGER. COORDINATE WITH HVAC DUCTING AND PROVIDE TRAPEZOIDAL BRACES SUSPENDED UNDER THE DUCT TO MOUNT THE POLE TOP AS REQUIRED.
- PROVIDE POWER POLE TO FEED PHARMACY COUNTER.
- MAKE FINAL CONNECTION TO CIGARETTE LIGHTS. PROVIDE SWITCH.
- RECEPTACLE FOR THE IDF CABINET. VERIFY LOCATION WITH THE EQUIPMENT INSTALLER.
- LOCATE 2 DUPLEX OUTLETS BELOW DRIVE-THRU RX WINDOW DRAWER (FOR VAT CONTROL BOX, PBX AUDIO SYSTEM, AND CREDIT CARD JUNCTION BOX).
- INSTALL NEW DUPLEX OUTLET AT END OF CHECKLANES FOR NEW MERCHANTS. RUN NEW CIRCUIT TO PICK UP OUTLET DEVICES AND ROUTE CONDUCTORS THRU NEAREST POWER POLES AS REQUIRED.
- RECEPTACLE LOCATED WITHIN CUSTOMER PNEUMATIC TUBE UNIT. VERIFY LOCATION WITH PHARMACY DRIVE-THRU EQUIPMENT SHOP DRAWINGS.
- PROVIDE 20A, 2 POLE DISCONNECT SWITCH FOR CONDENSATE OVERFLOW. VERIFY POSITION WITH EQUIPMENT INSTALLER PRIOR TO ROUGHING IN.
- PROVIDE 20A, 2 POLE DISCONNECT SWITCH FOR FCU.
- RECEPTACLE LOCATED WITHIN CREDIT CARD/TWO WAY VIDEO SECURE CABINET. VERIFY LOCATION WITH PHARMACY DRIVE-THRU EQUIPMENT SHOP DRAWINGS.
- ECR EQUIPMENT TO BE CIRCUITED THROUGH RACKS. COORDINATE FINAL LOCATION WITH EQUIPMENT INSTALLER.
- MAINTAINING 110 VOLTS UNDER FULL LOAD 20 AMPS AT THE NEMA 5-20 RECEPTACLE FOR THIS MACHINE IS EXTREMELY CRITICAL TO ENSURE PROPER VOLTAGE. UPSIZE THE WIRE SIZE SO THERE IS NO VOLTAGE DROP AT THE MACHINE. FAILURE TO DO SO WILL RESULT IN THE MACHINE SHUTTING DOWN WITHOUT NOTICE.
- COORDINATE ALL OUTLETS IN THE ECR WITH THE EQUIPMENT INSTALLER.
- PROVIDE LS-30 TWISTLOCK OUTLETS. 3/16"-3/4" C. TWISTLOCK RECEPTACLES TO BE MOUNTED ON RACK.
- MOUNT OUTLET DEVICES ON REAR SIDE OF RACK AS HIGH AS POSSIBLE. COORDINATE EXACT LOCATION WITH OWNER'S PROJECT MANAGER.
- RUN NEW CIRCUIT FROM INDICATED PANEL FOR STARBUCKS ESPRESSO MACHINE. 2#8 & 1#100ND-3/4" C. OUTLET TO MATCH DEVICE PLUG.
- STARBUCKS ELECTRICAL PANEL. PROVIDED BY VENDOR AND INSTALLED BY THE CONTRACTOR. SEE SINGLE LINE DIAGRAM ON SHEET E6.2 FOR DETAIL.
- RUN NEW EMERGENCY CIRCUITS TO POWER FIRE ALARM CONTROL PANEL AND SECURITY PANEL RESPECTIVELY AS REQUIRED. COORDINATE FINAL LOCATION WITH FIRE ALARM AND INTRUSION ALARM INSTALLERS.
- RUN NEW CIRCUIT TO POWER CHECKLAME BELTS. MOUNT JUNCTION BOXES IN JUST SPACE AND ROUTE CONDUCTORS THRU POWER POLES AS REQUIRED.
- PROVIDE WALK-IN DOOR MONITOR PER ESD-4.
- PROVIDE AND INSTALL PLUGMOLD AT THIS LOCATION. SEE PROJECT SPECIFICATIONS FOR TYPE AND OUTLET SPACING REQUIREMENTS. VERIFY LENGTH AND MOUNTING LOCATION WITH OWNER'S PROJECT MANAGER.
- MAKE CONNECTION TO SECURITY PEDESTAL EQUIPMENT AS REQUIRED. SEE ESD-52 FOR ADDITIONAL REQUIREMENTS.
- EDWARDS NO. 340A-GS BUZZER. PROVIDE FLUSH MOUNTED OUTLET BOX, GASKET, ETC. AS REQUIRED. MOUNT 8'-0" A.F.F.
- COORDINATE EXACT LOCATION OF BUZZER WITH OWNER'S PROJECT MANAGER.
- MAKE CONNECTION TO SECURITY PEDESTAL EQUIPMENT AS REQUIRED. SEE ESD-52A FOR ADDITIONAL REQUIREMENTS.
- PROVIDE NEW WALL MOUNTED TRANSFORMER. PROVIDE PROPRIETARY BRACKETS TO MANUFACTURERS REQUIREMENTS MOUNTED ON WALL AT 6' AFF TO REFER TO SINGLE LINE DIAGRAM ON SHEET E6.2 AND TRANSFORMER SCHEDULE ON SHEET E6.2.5 FOR ADDITIONAL INFORMATION.
- PROVIDE NEW FLOOR MOUNTED TRANSFORMER ON A 4" HOUSEKEEPING PAD. REFER TO SINGLE LINE DIAGRAM ON SHEET E6.2 AND TRANSFORMER SCHEDULE ON SHEET E6.2.5 FOR ADDITIONAL INFORMATION. REFER TO DETAIL #65 ON SHEET E6.2.1 FOR ISOLATION TYPE TRANSFORMER DETAIL.
- PROVIDE POWER POLE TO FEED POWER PLI TO COULDR. GENERATOR ANNUNCIATOR REMOTE ALARM PANEL, SUPPLIED BY OWNER INSTALLED BY CONTRACTOR. PROVIDE #14, 3/4" C FROM GENERATOR TO SECURITY ALARM PANEL FOR MALFUNCTION ALARM. CONFIRM FINAL LOCATION WITH OWNERS PROJECT MANAGER.

KROGER  
STORE #473  
2013 UNIVERSITY AVENUE  
OXFORD, MISSISSIPPI 38655  
A DEVELOPMENT OF THE KROGER COMPANY

Naos Design Group Of Mississippi, PLLC.  
MARC BREETZ, ARCHITECT  
645 Lakeland East Drive Suite 101  
Flowood, Mississippi 39232  
(p) 303.759.5777  
(f) 720.360.4281

ARCHITECT OF RECORD

CDS COMMERCIAL DESIGN SYSTEMS, INC.  
13825 SW GALLERIE DRIVE  
SHERWOOD, OREGON 97140  
503.855.7000 (p)503.855.8502  
INTERIOR DESIGN

Pickering Firm, Inc.  
Architecture - Engineering  
Planning - Surveying  
6775 Lenox Center Court, Suite 300  
Memphis, TN 38115  
901.726.8810  
ENGINEER OF RECORD:  
STRUCTURAL  
MECHANICAL  
ELECTRICAL  
CIVIL ENGINEER

V-SOFT INFRASTRUCTURE  
11280 CHESTER ROAD  
CINCINNATI, OH 45244  
T: 513-998-3819  
LOW VOLTAGE

TELGIAN CORPORATION  
10230 SOUTH 60TH PLACE  
SUITE 100  
PHOENIX, AZ 85044  
T: (677) 836-4426  
HTTP://WWW.TELGIAN.COM  
FIRE PROTECTION

ISSUE LOG

NO.	REV.	DESCRIPTION	DATE
1	0	PERMIT SET	12/06/18
2	0	BID SET	03/21/19

JOB: 2019041 SCALE: AS SHOWN

SHEET NO.  
**E4.1**  
ELECTRICAL ENLARGED POWER PLANS

Copyright © 2019 Naos Design Group of Mississippi, PLLC. All rights reserved. This drawing is the property of Naos Design Group of Mississippi, PLLC. It is to be used only for the project and location specified. No part of this drawing may be reproduced, stored in a retrieval system, or transmitted in any form or by any means, electronic, mechanical, photocopying, recording, or by any information storage and retrieval system, without prior written consent of Naos Design Group of Mississippi, PLLC.