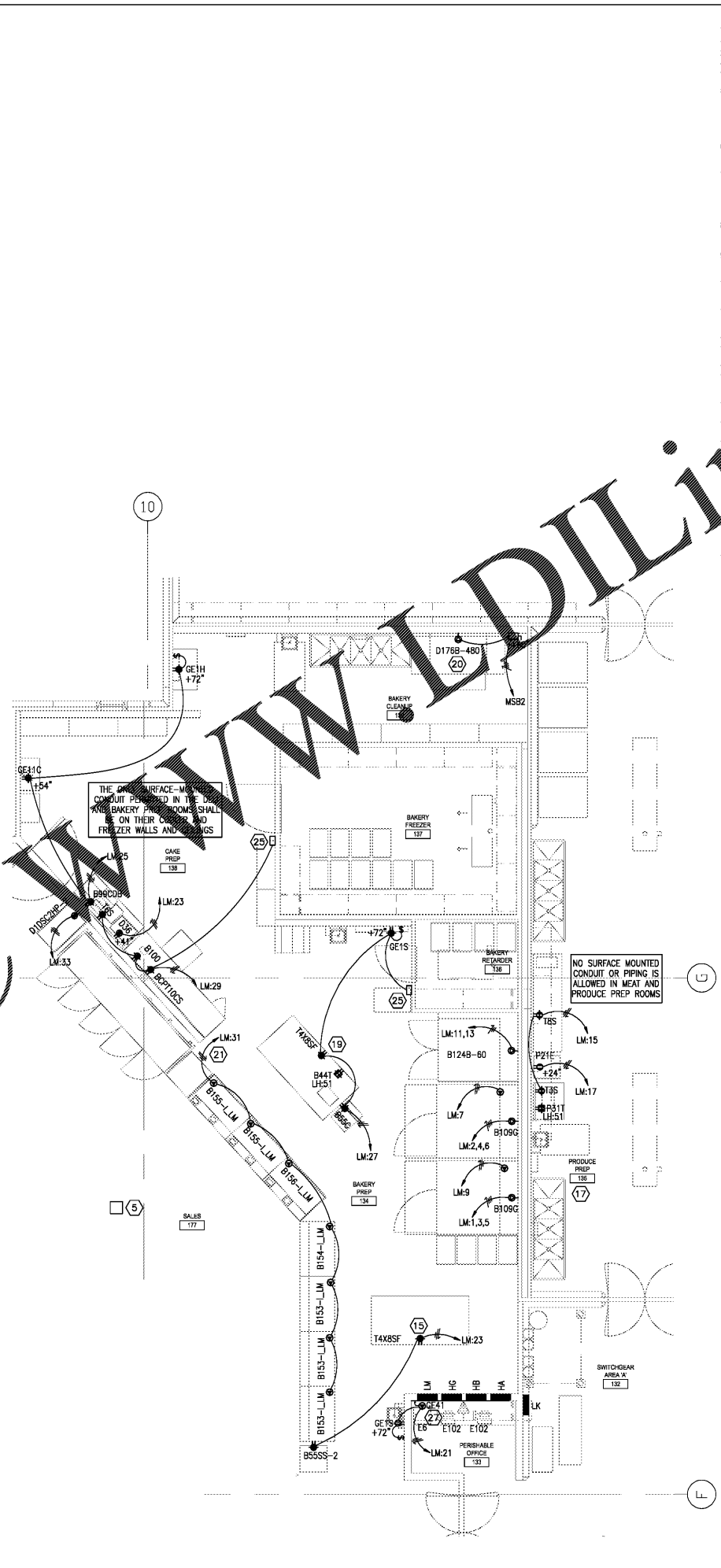


01 ENLARGED POWER - DELI

SCALE: 1/4" = 1'-0"



02 ENLARGED POWER - BAKERY

SCALE: 1/4" = 1'-0"

GENERAL NOTES

- SEE SHEET E0.1 FOR PROJECT GENERAL NOTES AND LEGEND.
- SEE SHEET E6.1 FOR ELECTRICAL EQUIPMENT SCHEDULE.
- SEE E6.1 FOR REFRIGERATION EQUIPMENT SCHEDULE.
- REFER TO E1.3.3 AND E1.3.4 FOR REFRIGERATED CASES, FANS, LIGHTS AND ANTI-SWEAT CIRCUITING INFORMATION.
- CIRCUIT NUMBERS FOR EXISTING PANELS ARE BASED ON AS-BUILT DRAWING INFORMATION AND MAY BE AT VARIANCE WITH ACTUAL CONDITIONS. FIELD INVESTIGATE CIRCUITING AND MAKE ADJUSTMENTS TO CIRCUIT ASSIGNMENTS IN THE PANEL AS REQUIRED. CONNECT TO EXISTING BREAKERS IN THE PANEL AS THEY BECOME AVAILABLE DURING DEMOLITION. ALL HOMERUNS TO EXISTING PANELS ARE TO SPARE BREAKERS OR EXISTING BREAKERS MADE AVAILABLE BY DEMOLITION L.O.I.
- ALL EXISTING PANELBOARD, TRANSFORMERS, SWITCHES AND SWITCHBOARDS ARE SHADDED BLACK AND/OR OTHERWISE NOTED.
- INCLUDE IN THE SCOPE OF WORK, TEMPORARY SERVICES FOR EXISTING EQUIPMENT, DEVICES AND OWNER'S EQUIPMENT THAT MUST BE TEMPORARILY RELOCATED DUE TO CONSTRUCTION PHASING. CONSIDER MOVING OWNER'S EQUIPMENT SUCH AS CHECKSTANDS, REFRIGERATED CASES, LIGHTED VALANCES ETC. TWICE. SEE THE PHASING PLAN AND COORDINATE WITH OWNER'S PROJECT MANAGER.
- COORDINATE THE EXACT LOCATIONS OF ALL EQUIPMENT WITH THE OWNERS PROJECT MANAGER AND INSTALL PER THE REQUIREMENTS OF THE RESPECTIVE EQUIPMENT SUPPLIER/INSTALLER.
- CONTRACTOR TO ALLOW FOR ELECTRICAL CONNECTION/HOOK UP OF ALL HVAC, REFRIGERATION, KITCHEN AND OTHER ELECTRICALLY OPERATED EQUIPMENT SHOWN ON THE DRAWINGS.
- THE GENERAL CONTRACTOR SHALL MAINTAIN POWER TO ALL NEW AND EXISTING OPERATIONAL EQUIPMENT AT ALL TIMES DURING CONSTRUCTION. THE CONTRACTOR SHALL ALLOW FOR TEMPORARY WORKS AS AND WHERE NECESSARY.
- ALL ELECTRICAL CONDUITS IN THE SALES AREA DESCENDING FROM ROOF FRAMING EITHER LOW WALLS OR EQUIPMENT SHOULD BE COORDINATED TO BE COLOCATED TOGETHER WITH OTHER MECHANICAL PIPES.
- SEE SINGLE LINE DIAGRAM ON SHEET E6.2 FOR SIZE OF DISCONNECT SWITCHES.
- SEE ESD-26 FOR WIRING METHODS IN ALL WORK AREAS.
- SEE MECHANICAL DRAWINGS FOR LOCATIONS OF TEMPORARY AIR HUMIDITY SENSORS.
- PROVIDE WEATHERPROOF BOXES AND LIQUID-TIGHT FLEXIBLE CONDUIT TO CASES IN OR IMMEDIATELY ADJACENT TO WASHDOWN AREAS SUCH AS SEAFOOD PREP, MEAT PREP, DELI AND BAKERY PREP AREAS.
- WHERE ELECTRICAL SERVICE FEEDERS CROSS THROUGH WALLS, CONTRACTOR TO COORDINATE WITH MECHANICAL DRAWINGS.
- ALL APPLIANCE DISCONNECTS ARE TO BE MOUNTED AT 5'-0" A.F.F. UNLESS OTHERWISE INDICATED.
- PROVIDE WEATHERPROOF BOXES AND LIQUID-TIGHT FLEXIBLE CONDUIT TO CASES IN OR IMMEDIATELY ADJACENT TO WASHDOWN AREAS SUCH AS SEAFOOD PREP, MEAT PREP, DELI AND BAKERY PREP AREAS.
- MINIMUM BRANCH CIRCUIT WIRE SIZE SHALL BE #12. INCREASE WIRE SIZE AS REQUIRED TO PROVIDE 75 PERCENT VOLTAGE DROP TO THE EQUIPMENT OR TO DEVICE ON THE CIRCUIT. WHERE INCREASED WIRE SIZE WILL NOT FIT IN THE TERMINALS OR LUGS ON THE EQUIPMENT OR DEVICE, PROVIDE DIGITALS TO REDUCE TO #12. PROVIDE ANY JUNCTION BOXES AS REQUIRED.

KEYNOTES

- RUN CONDUITS CONCEALED IN MILLWORK. COORDINATE WITH MILLWORK INSTALLER KROGER PROJECT MANAGER FOR PLACEMENT OF RECEPTACLES AND ROUTING OF CONDUIT PRIOR TO INSTALLATION.
- PROVIDE NEW POWER POLE FOR SELF CHECKSTAND(S). REFER TO DETAIL ESD-62A FOR INSTALLATION. INSTALL AND CONNECT ILLUMINATED CHECK LANE # SIGN ON POLE.
- RECEPTACLE FLUSH MOUNTED IN CEILING FOR (2) 48" DIGITAL MONITOR MENU BOARDS. COORDINATE THE EXACT LOCATION WITH THE MENU BOARD INSTALLER.
- SWITCH TO CONTROL MENU BOARD RECEPTACLES ONLY. OTHER OUTLETS, DEVICES AND RECEPTACLES ON THIS CIRCUIT ARE NOT TO LOSE POWER WHEN THIS SWITCH IS TURNED OFF.
- PROVIDE 12" BY 12" ELECTRICAL JUNCTION BOX MOUNTED TO THE BUILDING STRUCTURE 10 FEET IN FRONT OF THE DELI SERVICE AREA SOFFIT OVER AISLE. PROVIDE (6) 1" CONDUITS FED DIRECTLY FROM PANEL 'LK' FOR CIRCUITS FOR FUTURE DELI/BAKERY EQUIPMENT.
- RUN NEW HOOD CIRCUIT TO PICK UP HOOD LIGHTS. LIGHTS SUPPLIED WITH HOOD. USE A 1P-20A MOUNT TRIP BREAKER SUCH THAT THE CIRCUIT IS DE-ENERGIZED UPON ACTIVATION OF THE HOOD FIRE SUPPRESSION SYSTEM. CONNECTION TO HOOD FANS. SEE MECHANICAL PLANS FOR DETAIL.
- 20A, 208V, 3PST SWITCH.
- PROVIDE CONTROL WIRING SO THAT THE FAN WILL RUN IF EITHER THE TEMPERATURE SENSOR OR THE MANUAL FAN SWITCH IS ACTIVATED AND THE FAN WILL CONTINUE TO RUN OR WILL START AND RUN IF THE HOOD FIRE SUPPRESSION SYSTEM IS ACTIVATED. VERIFY MOUNTING LOCATION OF STARTER/DISCONNECT FOR HOOD FAN WITH HOOD INSTALLER. SEE ESD-35 & ESD-35A FOR SIMILAR INSTALLATION. CONFIRM EXACT WIRING REQUIREMENTS WITH MANUFACTURER'S SPECIFICATION. SEE SHEET E6.2 FOR SINGLE LINE DIAGRAM.
- PROVIDE/INSTALL FLUSH MOUNTED OUTLET BOX AND CONCEALED CONDUIT FOR HOOD FIRE SUPPRESSION MANUAL PULL STATION.
- TO SHUNT TRIP BREAKERS FOR EQUIPMENT UNDER THIS HOOD TO SHUT OFF BREAKER IF THE HOOD SUPPRESSION SYSTEM IS ACTIVATED.
- RUN (3) #4 CONDUCTORS AND A #10 GND - 1 1/4" C PER FRYER CIRCUIT AS INDICATED. USE SHUNT TRIP BREAKERS AND CONNECT TO HOOD FIRE SUPPRESSION SYSTEM AS REQUIRED TO TRIP THE BREAKERS. SEE SHEET E6.2.1 FOR PANEL SCHEDULE.
- RUN (3) #6 CONDUCTORS AND A #10 GND - 1" C PER 480V FRYER/OVEN CIRCUIT AS INDICATED. USE SHUNT TRIP BREAKERS AND CONNECT TO HOOD FIRE SUPPRESSION SYSTEM AS REQUIRED TO TRIP THE BREAKERS. SEE SHEET E6.2.1 FOR PANEL SCHEDULE.
- RUN (2) #6 CONDUCTORS AND A #10 GND - 1" C FOR TOASTER OVEN AS REQUIRED. TYPE NEMA 6-50P.
- PROVIDE CORD DROP(S) FROM CEILING TO FEED DEVICE(S) AS NECESSARY. REFER TO ESD-16 FOR INSTALLATION. CORD SHALL BE WHITE.
- RUN NEW CIRCUIT FOR PASS THRU BAR. CONNECT TO EQUIPMENT LOAD CENTER AS REQUIRED.
- ROUTE ALL CONDUITS OUTSIDE OF COOLER AND FREEZER. SEE ESD-26.
- MOUNT OUTLETS ON THE BACK OF CASE AS REQUIRED.
- PROVIDE OUTLET BOX WITH CORD DROP FROM CEILING FOR EACH OUTLET AS REQUIRED. SEE ESD-18A. CORD SHALL BE WHITE.
- UTENSIL WASHER. MOUNT DISCONNECT AT 5'-0" A.F.F. COORDINATE DISCONNECT LOCATION WITH KITCHEN EQUIPMENT INSTALLER.
- BAKERY DISPLAY CASES TO BE CIRCUITED THROUGH CONTACTOR #C43.
- PUSHBUTTON - SEE DETAIL #01 ON SHEET E5.2.1. COORDINATE THE EXACT LOCATION WITH THE OWNER'S PROJECT MANAGER.
- TRANSFORMER MOUNTED ABOVE CEILING. EDWARDS NO. 599, 120-24V AC. PROVIDE LOW VOLTAGE WIRING TO BELL AND PUSHBUTTON AS REQUIRED.
- BELL - EDWARDS NO. 1566-465, 4" BELL. MOUNT 8'-0" A.F.F.
- PROVIDE WALK-IN DOOR MONITOR PER ESD-4.
- TYPE NEMA 5-15P RECEPTACLE.
- PROVIDE AND INSTALL PLUGMOLD AT THIS LOCATION. SEE PROJECT SPECIFICATIONS FOR TYPE AND OUTLET SPACING REQUIREMENTS. VERIFY LENGTH AND MOUNTING LOCATION WITH OWNER'S PROJECT MANAGER.
- MAKE CONNECTION TO SECURITY PEDESTAL EQUIPMENT AS REQUIRED. SEE ESD-52A FOR ADDITIONAL REQUIREMENTS.
- THE GENERAL CONTRACTOR IS TO BID THE SETTING, INSTALLATION, CONNECTION, ELECTRICAL WIRING, ELECTRICAL CONNECTIONS, ETC. FOR THE EQUIPMENT SHOWN HATCHED IN THE MEALS PREP - 123 AND TENANT PREP - 119 AS ALTERNATE #1 IN THEIR BID. THE HOOD, ROOF PENETRATION, WIRING, SWITCHES, ETC. FOR THE SMOKER IN TENANT PREP - 119 IS TO BE INCLUDED IN THE ALTERNATE #1.

KROGER
STORE #473
2013 UNIVERSITY AVENUE
OXFORD, MISSISSIPPI 38655
A DEVELOPMENT OF THE KROGER COMPANY

Naos Design Group Of Mississippi, PLLC.
MARC BREETZ, ARCHITECT
645 Lakeland East Drive Suite 101
Flowood, Mississippi 39232
(p) 303.759.5777
(f) 720.360.4281

ARCHITECT OF RECORD

CDS COMMERCIAL DESIGN SYSTEMS, INC.
1825 SW GALLERIE DRIVE
SHERWOOD, OREGON 97140
503.855.7000 (p) 503.855.8002

INTERIOR DESIGNER

Pickering Firm, Inc.
Architectural - Engineering
Planning - Surveying
6775 Lenox Center Court, Suite 300
Memphis, TN 38115
901.728.8818

ENGINEER OF RECORD:
STRUCTURAL
MECHANICAL
ELECTRICAL
CIVIL ENGINEER

V-SOFT INFRASTRUCTURE
11280 CHESTER ROAD
CINCINNATI, OH 45248
T: 513-908-3819
LOW VOLTAGE

telgian
TELGIAN CORPORATION
10230 SOUTH 60TH PLACE
SUITE 100
PHOENIX, AZ 85044
T: 677.835-4426
HTTP://WWW.TELGIAN.COM
FIRE PROTECTION

ISSUE LOG

NO.	REV.	DESCRIPTION	DATE
1	-	PERMIT SET	12/06/18
2	-	BID SET	03/21/19

JOB NO. 2019041 SCALE AS SHOWN SHEET NO.

E4.1.2 ELECTRICAL ENLARGED POWER PLANS

COPYRIGHT © 2019 NAOS DESIGN GROUP OF MISSISSIPPI, PLLC. THESE DRAWINGS OR PARTS THEREOF MAY NOT BE REPRODUCED, COPIED, EITHER WHOLLY OR IN PART, WITHOUT THE WRITTEN CONSENT OF NAOS DESIGN GROUP OF MISSISSIPPI, PLLC.