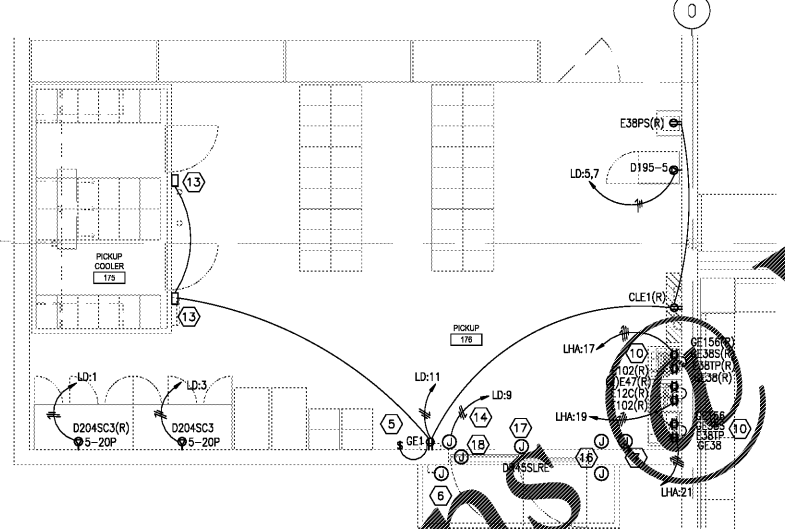
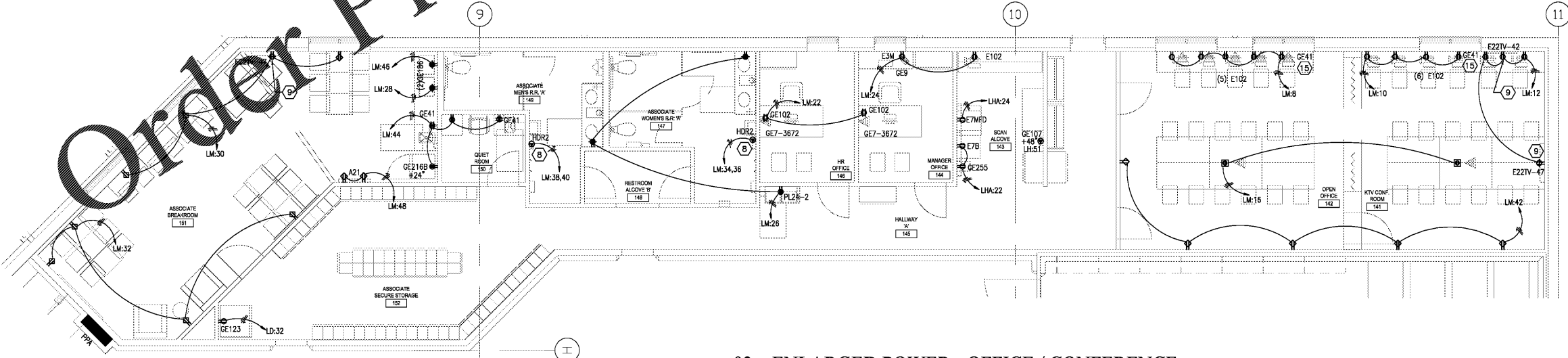


**01 ENLARGED POWER - MEAT & SEAFOOD**  
SCALE: 1/4" = 1'-0"



**02 ENLARGED POWER - GROCERY PICK UP**  
SCALE: 1/4" = 1'-0"



**03 ENLARGED POWER - OFFICE / CONFERENCE**  
SCALE: 1/4" = 1'-0"

**GENERAL NOTES**

- SEE SHEET E0.1 FOR PROJECT GENERAL NOTES AND LEGEND.
- SEE SHEET E6.1 FOR ELECTRICAL EQUIPMENT SCHEDULE.
- SEE E6.1.1 FOR REFRIGERATION EQUIPMENT SCHEDULE.
- REFER TO E1.3.3 AND E1.3.4 FOR REFRIGERATED CASES, FANS, LIGHTS AND ANTI-SWEAT CIRCUITING INFORMATION.
- CIRCUIT NUMBERS FOR EXISTING PANELS ARE BASED ON AS-BUILT DRAWING INFORMATION AND MAY BE AT VARIANCE WITH ACTUAL CONDITIONS. FIELD INVESTIGATE CIRCUITING AND MAKE ADJUSTMENTS TO CIRCUIT ASSIGNMENTS IN THE PANEL AS REQUIRED. CONNECT TO EXISTING BREAKERS IN THE PANEL AS THEY BECOME AVAILABLE DURING DEMOLITION. ALL HOMERUNS TO EXISTING PANELS ARE TO SPARE BREAKERS OR EXISTING BREAKERS MADE AVAILABLE BY DEMOLITION LOG.
- ALL EXISTING PANELBOARD, TRANSFORMERS, SWITCHES AND SWITCHBOARDS ARE SHADDED BLACK AND/OR OTHERWISE NOTED.
- NEW PANELBOARD, TRANSFORMERS, SWITCHES AND SWITCHBOARDS ARE SHADDED GRAY. ALL NEW PANELBOARD, TRANSFORMERS, SWITCHES AND SWITCHBOARDS ARE SHADDED BLACK AND/OR OTHERWISE NOTED.
- INCLUDE IN THE SCOPE OF WORK, TEMPORARY SERVICES FOR EXISTING EQUIPMENT, DEVICES AND OWNER'S EQUIPMENT THAT MUST BE TEMPORARILY RELOCATED DUE TO CONSTRUCTION PHASING. CONSIDER MOVING OWNER'S EQUIPMENT SUCH AS CHECKSTANDS, REFRIGERATED CASES, LIGHTED VALANCES ETC. TWICE. SEE THE PHASING PLAN AND COORDINATE WITH OWNER'S PROJECT MANAGER.
- COORDINATE THE EXACT LOCATIONS OF ALL EQUIPMENT WITH THE OWNER'S PROJECT MANAGER AND INSTALL PER THE REQUIREMENTS OF THE RESPECTIVE EQUIPMENT SUPPLIER/INSTALLER.
- CONTRACTOR TO ALLOW FOR ELECTRICAL CONNECTION/HOOK UP OF ALL HVAC, REFRIGERATION, KITCHEN AND OTHER ELECTRICALLY OPERATED EQUIPMENT SHOWN ON THE DRAWINGS.
- THE GENERAL CONTRACTOR SHALL MAINTAIN POWER TO ALL NEW AND EXISTING OPERATIONAL EQUIPMENT AT ALL TIMES DURING CONSTRUCTION. THE CONTRACTOR SHALL ALLOW FOR TEMPORARY WORKS AS AND WHERE NECESSARY.
- ALL ELECTRICAL CONDUITS IN THE SALES AREA DESCENDING FROM ROOF TRUSSING EITHER THROUGH WALLS OR EQUIPMENT SHOULD BE COORDINATED AND GROUPED TOGETHER WITH OTHER MECHANICAL PIPES.
- SEE SINGLE LINE DIAGRAM ON SHEET E6.2 FOR SIZE OF DISCONNECT SWITCHES.
- SEE ESD-26 FOR WIRING METHODS IN WALK-IN COOLERS, FREEZERS, AND PREP AREAS.
- SEE MECHANICAL DRAWINGS FOR LOCATIONS OF TEMPERATURE AND HUMIDITY SENSORS.
- PROVIDE WEATHERPROOF BOXES AND LIQUID-TIGHT FLEXIBLE CONDUIT TO CASES IN OR IMMEDIATELY ADJACENT TO WASHDOWN AREAS SUCH AS SEAFOOD PREP, MEAT PREP, DELI AND BAKERY PREP AREAS.
- WHERE ELECTRICAL SERVICE FEEDERS CROSS THROUGH WALLS, CONTRACTOR TO COORDINATE WITH MECHANICAL DRAWINGS.
- ALL APPLIANCE DISCONNECTS ARE TO BE MOUNTED AT 5'-0" A.F.F. UNLESS OTHERWISE INDICATED.
- PROVIDE WEATHERPROOF BOXES AND LIQUID-TIGHT FLEXIBLE CONDUIT TO CASES IN OR IMMEDIATELY ADJACENT TO WASHDOWN AREAS SUCH AS SEAFOOD PREP, MEAT PREP, DELI AND BAKERY PREP AREAS.
- MINIMUM BRANCH CIRCUIT WIRE SIZE SHALL BE #12. INCREASE WIRE SIZE AS REQUIRED TO PROVIDE 5 PERCENT VOLTAGE DROP TO THE EQUIPMENT OR LAST DEVICE ON THE CIRCUIT. WHERE INCREASED WIRE SIZE WILL NOT FIT IN THE TERMINALS OR LUGS OF THE EQUIPMENT OR DEVICE, PROVIDE DIGITALS TO REDUCE TO #12. PROVIDE ANY JUNCTION BOXES AS REQUIRED.

**KEYNOTES**

- PUSHBUTTON - SEE DETAIL #01 ON SHEET E5.2.1. COORDINATE THE EXACT LOCATION WITH THE OWNER'S PROJECT MANAGER.
- TRANSFORMER MOUNTED ABOVE CEILING - EDWARDS NO. 599, 120-24V AC. PROVIDE LOW VOLTAGE WIRING TO BELL AND PUSHBUTTON AS REQUIRED.
- BELL - EDWARDS NO. 156G-465, 4" BELL. MOUNT 8'-0" A.F.F.
- RECEPTACLE FOR THE IDF CABINET. VERIFY LOCATION WITH THE EQUIPMENT INSTALLER.
- MOUNT RECEPTACLE FOR FLY ZAPPER AT 7'-6" ABOVE FLOOR. MOUNT SWITCH AT 5'-6" ABOVE FLOOR. MOUNT BOTTOM OF FLY ZAPPER AT 4'-0" ABOVE FLOOR.
- DOOR SWITCH INCLUDED AND INSTALLED WITH AUTO DOOR PACKAGE READY FOR WIRING SECURITY SYSTEM. INSTALL ADDRESSABLE POPIT FOR SECURITY POINT. PROVIDE DRY CONTACTS ON SLIDING DOOR. THE DOOR SHALL AUTOMATICALLY INTERNALLY LOCK EACH TIME DOOR CYCLES TO CLOSE.
- NEW PUSHBUTTON FOR AUTOMATIC DOOR. CONFIRM LOCATION WITH KROGER PROJECT MANAGER TO ROUGH-IN AND INSTALLATION.
- MAKE CONNECTION TO HAND DRYER. COORDINATE WITH EQUIPMENT INSTALLER.
- COORDINATE THE EXACT HEIGHT AND LOCATION OF THE TV OUTLET WITH THE TV INSTALLER.
- RUN CONDUITS CONCEALED IN MILLWORK. COORDINATE WITH MILLWORK INSTALLER KROGER PROJECT MANAGER FOR PLACEMENT OF RECEPTACLES AND ROUTING OF CONDUIT PRIOR TO ROUGH IN.
- ROUTE ALL CONDUITS OUTSIDE OF COOLER AND FREEZER. SEE ESD-26.
- PROVIDE DROP CORD TO FEED MEAT SAW. REFER TO ESD-16B.
- PROVIDE WALK-IN DOOR MONITOR PER EISD-4.
- LINE VOLTAGE FOR AUTOMATIC DOOR.
- PROVIDE AND INSTALL PLUGMOLD AT THIS LOCATION. SEE PROJECT SPECIFICATIONS FOR TYPE AND OUTLET SPACING REQUIREMENTS. VERIFY LENGTH AND MOUNTING LOCATION WITH OWNER'S PROJECT MANAGER.
- NEW SECURITY ACCESS KEYPAD. KEYPAD TO BYPASS THE ALARM.
- WALL MOUNTED SECURITY MOTION DETECTOR. MOUNT AT 4807A.F.F.
- NEW DOOR ALARM LOCATION. ELECTRICAL CONTRACTOR TO CONNECT DOOR ALARM CIRCUIT TO LOCAL EM CIRCUIT.

**KROGER**  
STORE #473

2013 UNIVERSITY AVENUE  
OXFORD, MISSISSIPPI 38655

A DEVELOPMENT OF THE KROGER COMPANY

**naos**  
Naos Design Group Of Mississippi, PLLC.

MARC BREETZ, ARCHITECT

645 Lakeland East Drive  
Suite 101  
Flowood, Mississippi 39232  
(p) 303.759.5777  
(f) 720.360.4281

ARCHITECT OF RECORD

**CDS**  
COMMERCIAL DESIGN SYSTEMS, INC.

18225 SW GALLERIE DRIVE  
SHERWOOD, OREGON 97140  
503.855.7000 (p) 503.855.8002

INTERIOR DECOR

**Pickering Firm, Inc.**  
Architecture - Engineering  
Planning - Surveying

6775 Lenox Center Court, Suite 300  
Memphis, TN 38115  
901.726.8816

ENGINEER OF RECORD:  
STRUCTURAL  
MECHANICAL  
ELECTRICAL  
CIVIL ENGINEER

**V-SOFT**  
INFRASTRUCTURE

11280 CHESTER ROAD  
CINCINNATI, OH 45246  
T: 513-900-3819  
LOW VOLTAGE

**telgian**  
TELGIAN CORPORATION  
10230 SOUTH 60TH PLACE  
SUITE 100  
PHOENIX, AZ 85044  
T: (677) 836-4426  
HTTP://WWW.TELGIAN.COM  
FIRE PROTECTION

**ISSUE LOG**

NO.	REV.	DESCRIPTION	DATE
1	-	PERMIT SET	12/06/18
2	-	BID SET	03/21/19

JOB	SCALE
2019041	AS SHOWN
SHEET NO.	

**E4.1.1**  
ELECTRICAL ENLARGED POWER PLANS

COPYRIGHT © 2018 NAOS DESIGN GROUP OF MISSISSIPPI, PLLC. THESE DRAWINGS OR ANY PART THEREOF MAY NOT BE REPRODUCED, COPIED, EITHER WHOLLY OR IN PART, OR FOR ANY PURPOSE, WITHOUT PRIOR WRITTEN CONSENT FROM NAOS.