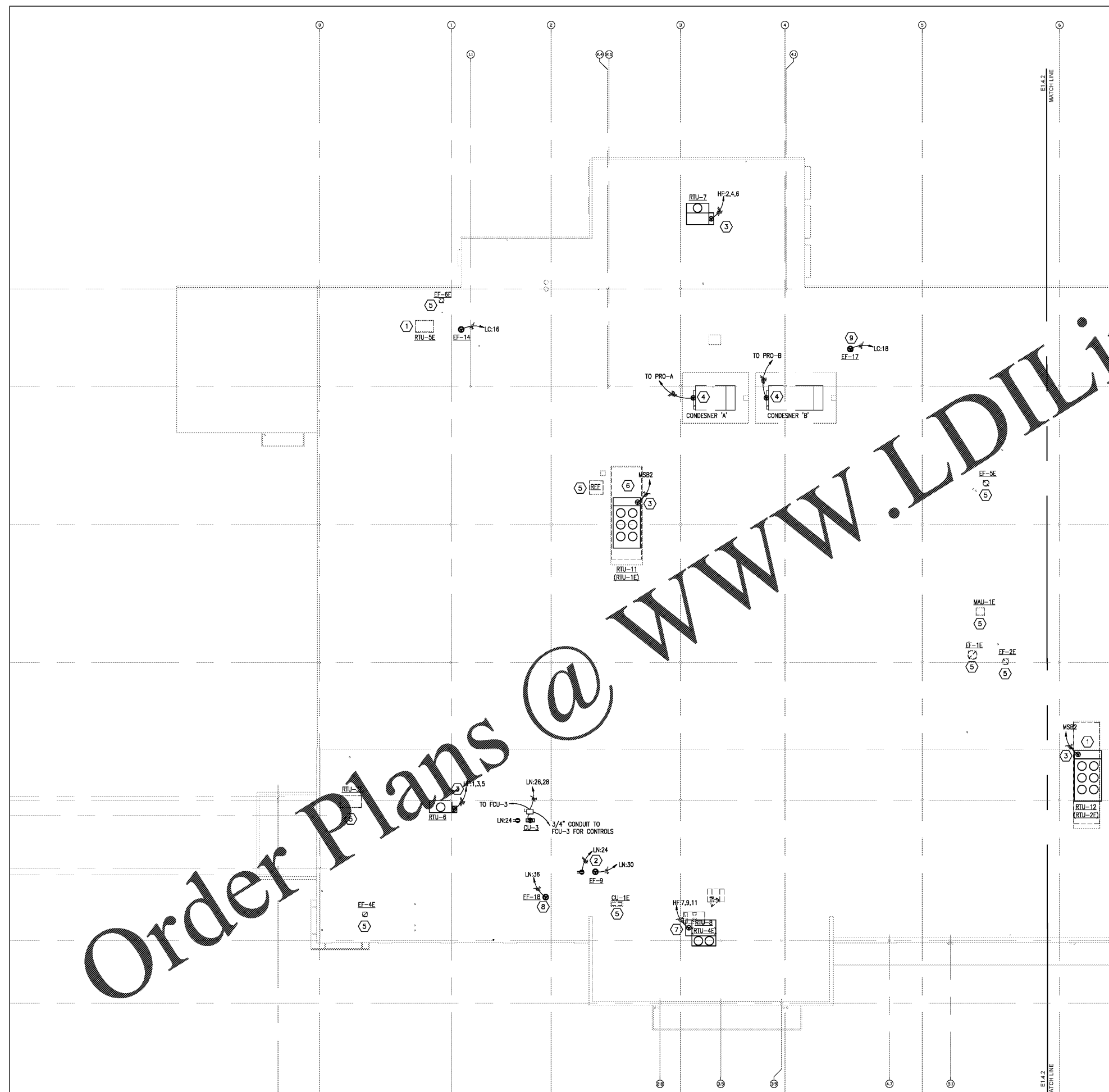


Order Plans @

WWW.LDILINE.COM



GENERAL NOTES

- REFER TO SHEET E0.1 FOR GENERAL NOTES, LEGEND AND ABBREVIATIONS REFERENCED ON THIS SHEET.
- CIRCUIT NUMBERS FOR EXISTING PANELS ARE BASED ON AS-BUILT DRAWING INFORMATION AND MAY BE AT VARIANCE WITH ACTUAL CONDITIONS. FIELD INVESTIGATE CIRCUITING AND MAKE ADJUSTMENTS TO CIRCUIT ASSIGNMENTS IN THE PANEL AS REQUIRED. CONNECT TO EXISTING BREAKERS IN THE PANEL AS THEY BECOME AVAILABLE DURING DEMOLITION. ALL POWERLINES TO EXISTING PANELS ARE TO SPARE BREAKERS OR EXISTING BREAKERS MADE AVAILABLE BY DEMOLITION U.O.I.
- COORDINATE DEMOLITIONS WITH THE OWNER'S PROJECT MANAGER AND PROJECT PHASING PLAN BEFORE EQUIPMENT, DEVICES OR WIRING IS REMOVED.
- REMOVE ALL DEMOLISHED MATERIALS FROM THE SITE AND DISPOSE OF PROPERLY AND LEGALLY.
- FIELD VERIFY EXISTING CONDITIONS AND PROJECT SCOPE PRIOR TO BIDDING THE PROJECT.
- PROVIDE TEMPORARY CIRCUITS TO DEVICES AND EQUIPMENT WHERE THE SOURCE SUCH AS THE PANEL IS REMOVED IN AN EARLIER PHASE. THIS SHOULD INCLUDE BUT NOT BE LIMITED TO TEMPORARILY RELOCATING THE PANEL AND MODIFYING THE EXISTING FEEDER AND BRANCH CIRCUIT WIRING AS REQUIRED.
- CAREFULLY REMOVE EQUIPMENT AND DEVICES THAT ARE NOT TO BE REMOVED, STORED AND RE-USED. REPLACE ANY OF THE EQUIPMENT DAMAGED DURING REMOVAL, STORAGE OR REINSTALLATION.
- ALL EXISTING EXTERIOR POWER DEVICES AND FIXTURES ON THE ROOF, AND ASSOCIATED WIRING SHALL REMAIN UNLESS OTHERWISE INDICATED.
- WEATHERPROOF RECEPTACLES WITH GROUND FAULT CIRCUIT INTERRUPTER PROTECTION (GFCI) FACTORY INSTALLED. OWNER PROVIDED HVAC ROOFTOP UNITS (RTU'S).
- RTU'S ARE FACTORY INSTALLED IN THE HVAC ROOFTOP UNITS (RTU'S).
- DISCONNECTS FOR EXHAUST FANS ARE PROVIDED BY OWNER THROUGH FAN SUPPLY.
- SEE THE SINGLE LINE DIAGRAM ON SHEET E6.2 FOR DISCONNECT SWITCH SIZES.
- MINIMUM BRANCH CIRCUIT WIRE SIZE SHALL BE #10. INCREASE WIRE SIZE AS REQUIRED TO PROVIDE A 1.5 PERCENT VOLTAGE DROP TO THE EQUIPMENT OR LAMP DEVICE ON THE CIRCUIT. WHERE INCREASED WIRE SIZE WILL NOT FIT IN THE TERMINALS OR LUGS OF THE EQUIPMENT OR DEVICE, PROVIDE PIGTAILS TO REDUCE TO #10. PROVIDE ANY JUNCTION BOXES AS REQUIRED.

KEYNOTES

- EXISTING SUPPLY TO REMAIN AS IS.
- FAN SHALL BE INTERLOCKED WITH THE LIGHTS AND ONLY OPERATE WHEN THE LIGHTS ARE ON. FAN SPEED CONTROLLER PROVIDED BY MECHANICAL CONTRACTOR AND INSTALLED BY ELECTRICAL CONTRACTOR.
- PROVIDE DIRECT CONNECTION TO ROOF TOP UNIT. LOCAL DISCONNECT SUPPLIED WITH UNIT. SEE SHEET E6.2 FOR WIRE SIZE.
- PROVIDE DIRECT CONNECTION TO CONDENSER UNIT FROM PROTOCOL. LOCAL DISCONNECT SUPPLIED WITH UNIT. SEE SHEET E6.2 FOR WIRE SIZE.
- THIS ITEM TO BE DEMOLISHED. DISCONNECT AND MAKE SAFE EQUIPMENT. DEMOLISH FEEDER AND CONTROLS CONDUIT AND WIRE BACK TO SOURCE.
- DISCONNECT FEED FROM EXISTING RTU-1E AND DEMOLISH FEEDER BACK TO SOURCE. PROVIDE DIRECT CONNECTION TO RTU-11. LOCAL DISCONNECT SUPPLIED WITH UNIT. SEE SHEET E6.2 FOR WIRE SIZE.
- DISCONNECT AND DEMOLISH EXISTING RTU-1E AND DEMOLISH FEEDER BACK TO SOURCE. PROVIDE DIRECT CONNECTION TO RTU-9. LOCAL DISCONNECT SUPPLIED WITH UNIT. SEE SHEET E6.2 FOR WIRE SIZE.
- FAN SHALL BE WIRED THROUGH THERMOSTAT. THERMOSTAT PROVIDED BY MECHANICAL CONTRACTOR.
- FAN SHALL BE WIRED THROUGH SPEED CONTROLLER. SPEED CONTROLLER PROVIDED BY MECHANICAL CONTRACTOR. FAN TO RUN CONTINUOUSLY.

KROGER
STORE #473

2013 UNIVERSITY AVENUE
OXFORD, MISSISSIPPI 38655

A DEVELOPMENT OF
THE KROGER COMPANY

naos
Naos Design Group Of Mississippi, PLLC.

MARC BREETZ
ARCHITECT

645 Lakeland East Drive
Suite 101
Flowood, Mississippi 39232
(p) 303.759.5777
(f) 720.360.4281

ARCHITECT OF RECORD

CDS
COMMERCIAL DESIGN SYSTEMS, INC.

13825 SW GALBREATH DRIVE
SHERWOOD, OREGON 97140
503.855.7000 (p)503.855.8902

INTERIOR DECOR

Pickering Firm, Inc.
Architecture - Engineering
Planning - Surveying

6775 Lenox Center Court, Suite 300
Memphis, TN 38115
901.726.8819

ENGINEER OF RECORD:
STRUCTURAL
MECHANICAL
ELECTRICAL
CIVIL ENGINEER

V-SOFT
INFRASTRUCTURE

11280 CHESTER ROAD
CINCINNATI, OH 45246
T: 513-990-3819
LOW VOLTAGE

telgian
TELGIAN CORPORATION
10230 SOUTH 60TH PLACE
SUITE 100
PHOENIX, AZ 85044
T: (677) 836-4426
HTTP://WWW.TELGIAN.COM
FIRE PROTECTION

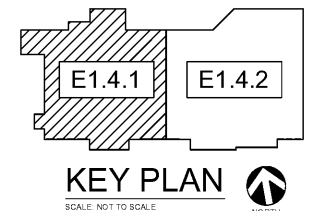
ISSUE LOG

NO.	REV.	DESCRIPTION	DATE
1	-	PERMIT SET	12/06/18
2	-	BID SET	03/21/19

JOB: 2019041 SCALE: AS SHOWN
SHEET NO.

E1.4.1
PARTIAL ROOF POWER PLAN WEST

01 PARTIAL ROOF POWER PLAN WEST
SCALE: 3/32" = 1'-0"



COPYRIGHT © 2019 NAOS DESIGN GROUP OF MISSISSIPPI, PLLC. THESE DRAWINGS OR PARTS THEREOF MAY NOT BE REPRODUCED, COPIED, EITHER WHOLLY OR IN PART, WITHOUT THE WRITTEN CONSENT OF NAOS DESIGN GROUP OF MISSISSIPPI, PLLC.