

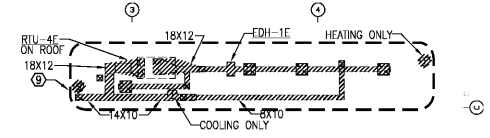
01 PARTIAL HVAC DEMO PLAN EAST
SCALE: 3/32" = 1'-0"

○ DEMO KEYNOTES

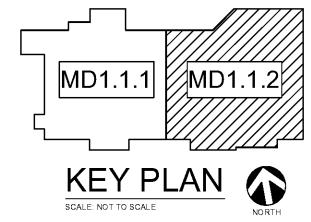
1. DEMO EXISTING GREASE HOOD, GREASE DUCT, MAKE UP AIR DUCT, MAKE UP AIR FAN ON ROOF, EXHAUST FAN ON ROOF, ANSUL SYSTEM, PULL STATION, AND GAS PIPE UP THRU ROOF.
2. DEMO EXISTING GREASE HOOD, GREASE DUCT, EXHAUST FAN ON ROOF, ANSUL SYSTEM, AND PULL STATION.
3. DEMO EXISTING EXHAUST FAN, EXHAUST DUCT, AND GAS PIPE UP THRU ROOF.
4. DEMO ALL DIFFUSERS, RETURN GRILLES, T'STAT, AND DUCT WORK UP TO RTU-3E ON ROOF.
5. DEMO ALL GRILLES AND EXHAUST DUCT UP TO EE-4E ON ROOF.
6. DEMO PORTION OF SUPPLY DUCT, DIFFUSERS, AND CAP DUCT.
7. DEMO PORTION OF RETURN DUCT, RETURN GRILLES, AND CAP DUCT.
8. DEMO EXHAUST GRILLES AND EXHAUST DUCT TO MAIN GAS RUNNING.
9. DEMO ALL MECHANICAL EQUIPMENT, DUCT, DIFFUSERS, GRILLES AND THERMOSTATS.
10. DEMO GAS PIPE FROM EMERGENCY GENERATOR CAP PIPE.
11. DEMO PORTION OF SUPPLY DUCT, DIFFUSERS, AND GRILLE. CAP DUCT.
12. DEMO ALL DUCT, DIFFUSERS, T'STAT, AND GRILLES CONNECTED TO RTU-3E.

EXISTING GENERAL HVAC NOTES

1. THESE DRAWINGS ARE BASED ON GENERAL STORE DRAWINGS. CONTRACTOR TO FIELD VERIFY EXISTING CONDITIONS PRIOR TO BIDDING OF PROJECT. WHERE ANY EQUIPMENT ON ROOF IS DISTURBED, IT IS THE HVAC CONTRACTOR'S RESPONSIBILITY TO COORDINATE WITH THE GENERAL CONTRACTOR FOR THE REPAIR OF ANY ROOFING ITEMS AFTER THE COMPLETION OF HVAC WORK.
2. ALL EQUIPMENT SHALL BE CONSIDERED EXISTING UNLESS OTHERWISE NOTED. EXISTING EQUIPMENT NOT SHOWN SHALL REMAIN UNCHANGED.
3. DAMAGED DIFFUSERS: IT IS THE CONTRACTOR'S RESPONSIBILITY TO IDENTIFY AND REPAIR ANY DAMAGED DIFFUSERS. PRE-BID: LOCATE AND ITEMIZE EXPECTED QUANTITY OF DAMAGED DIFFUSERS TO BE REPLACED. CONSTRUCTION: COORDINATE WITH KROGER ENGINEER FOR REPLACING OF DAMAGED DIFFUSERS.
4. EXISTING DIFFUSERS TO REMAIN: IT IS CONTRACTOR'S RESPONSIBILITY TO CLEAN ALL EXISTING DIFFUSERS AND RETURN GRILLES THAT ARE NOT REPLACED.
5. DEMOED DUCTWORK AND DIFFUSERS SHALL BE TAKEN DOWN AND PROPERLY DISPOSED OF.
6. ALL EXISTING SALES FLOOR DUCTWORK IS TO BE CLEANED AND PREPARED FOR PAINT, BOTH NEW AND EXISTING.



02 HVAC DEMO MEZZANINE PLAN
SCALE: 3/32" = 1'-0"



KROGER
STORE #473
2013 UNIVERSITY AVENUE
OXFORD, MISSISSIPPI 38655
A DEVELOPMENT OF THE KROGER COMPANY

Naos Design Group Of Mississippi, PLLC.
MARC BREETZ, ARCHITECT
645 Lakeland East Drive Suite 101
Flowood, Mississippi 39232
(p) 303.759.5777
(f) 720.360.4281
ARCHITECT OF RECORD

CDS COMMERCIAL DESIGN SYSTEMS, INC.
13825 SW GALLEREA DRIVE
SHERWOOD, OREGON 97140
503.855.7000 (p) 503.825.8902
INTERIOR DECOR

Pickering Firm, Inc.
Architecture - Engineering
Planning - Surveying
6775 Lenox Center Court, Suite 300
Memphis, TN 38115
901.726.8816
ENGINEER OF RECORD:
STRUCTURAL
MECHANICAL
ELECTRICAL
CIVIL ENGINEER

V-SOFT INFRASTRUCTURE
11280 CHESTER ROAD
CINCINNATI, OH 45246
T: 513-950-3819
LOW VOLTAGE

telgian
TELGIAN CORPORATION
10230 SOUTH 60TH PLACE
SUITE 100
PHOENIX, AZ 85044
T: (677) 836-4426
HTTP://WWW.TELGIAN.COM
FIRE PROTECTION

ISSUE LOG

NO.	REV.	DESCRIPTION	DATE
1	-	PERMIT SET	12/06/18
2	-	BID SET	03/21/19

JOB: 2019041 SCALE: AS SHOWN
SHEET NO.
MD1.1.2
PARTIAL HVAC DEMO PLAN EAST
COPYRIGHT © 2019 NAOS DESIGN GROUP OF MISSISSIPPI, PLLC. THESE DRAWINGS OR PARTS THEREOF MAY NOT BE REPRODUCED, COPIED, OR TRANSMITTED IN ANY FORM OR BY ANY MEANS, WITHOUT PRIOR WRITTEN CONSENT FROM NAOS.