

FIRE SPRINKLER PIPING

REMODEL NOTES

1. CONTRACTOR TO ADD ELBOWS IN BRANCHLINES TO AVOID OBSTRUCTIONS AS NECESSARY TO KEEP SPRINKLER DEFLECTOR AT PROPER ELEVATION.
2. HANGER #5 TYPICAL FOR ALL NEW SPRINKLER PIPING 4 IN. AND SMALLER, U.N.C. REF 1-FP4
3. HANGER #8 TYPICAL FOR ALL NEW SPRINKLER PIPING BELOW CONCRETE, U.N.C. REF 2-FP4
4. HANGER #15 TYPICAL AT ALL NEW SPRINKLER PIPING IN TOWERS AND CANOPIES HUNG FROM LIGHT GAUGE STEEL STRUCTURE, REF 3-FP4
5. HANGER #20 TYPICAL ON ALL NEW SPRINKLER PIPING REQUIRING TRAPEZOID HANGERS, REF 5-FP4
6. ALL ARM-OVERS TO BE 1" PIPING U.N.C.
7. PIPING ELEVATIONS TO BE FIELD VERIFIED BY INSTALLING CONTRACTOR.
8. ALL NEW PIPE FITTINGS TO BE:
 - 1" - 1 1/2" PIPING: CAST IRON SREWED
 - 1 1/2" - 6" PIPING: GROOVED
9. COORDINATE EXACT LOCATION OF NEW SPRINKERS AT COOLERS/REFRIGERATORS WITH LIGHTS, EVAPORATORS AND OTHER OBSTRUCTIONS. NOTE THAT FUEL GAS AND EVAPORATOR LOCATIONS MAY VARY FROM THOSE SHOWN ON PLAN. ADDITIONAL HANGERS MAY BE REQUIRED. TYPICAL FOR ALL COOLERS/REFRIGERATORS.
10. COORDINATE EXACT LOCATION OF NEW SPRINKERS WITH ALL EXISTING STRUCTURAL MEMBERS, ELECTRICAL AND MECHANICAL TRAYS. PROVIDE ADDITIONAL HANGERS AS NECESSARY TO MAINTAIN COVERAGE PER NFPA 13.
11. VERIFY ALL STRUCTURAL SUPPORTS MAY BE REQUIRED FOR SPRINKLER HANGERS, AND SEISMIC BRACING. GENERAL CONTRACTOR SHALL BE RESPONSIBLE FOR DESIGN AND INSTALLATION.

ALL EXISTING PIPING TO BE RE-USED WHERE POSSIBLE



**KROGER
STORE #473**

2013 UNIVERSITY AVENUE
OXFORD, MISSISSIPPI 38655

A DEVELOPMENT OF
THE KROGER COMPANY



Naos Design Group Of Mississippi, PLLC.

MARC BREETZ,
ARCHITECT

645 Lakeland East Drive
Suite 101
Flowood, Mississippi 39232
(p) 303.759.5777
(f) 720.360.4281

ARCHITECT OF RECORD



CDS
COMMERCIAL DESIGN SYSTEMS,
INC.
13825 SW GALBREATH DRIVE
SHERWOOD, OREGON 97140
503.855.7000 (P)503.825.8802
INTERIOR DECOR



Pickering Firm, Inc.
Architecture - Engineering
Planning - Surveying
6775 Lenox Center Court, Suite 300
Memphis, TN 38115
901.728.0810

ENGINEER OF RECORD:
STRUCTURAL
MECHANICAL
ELECTRICAL
CIVIL ENGINEER



VSOFT
INFRASTRUCTURE
11280 CHESTER ROAD
CINCINNATI, OH 45246
TEL: 513.894.3819



telgian
TELGIAN CORPORATION
10230 SOUTH 50TH PLACE
SUITE 100
PHOENIX, AZ 85044
TEL: (477) 836-4426
HTTP://WWW.TELGIAN.COM
FIRE PROTECTION

ISSUE LOG

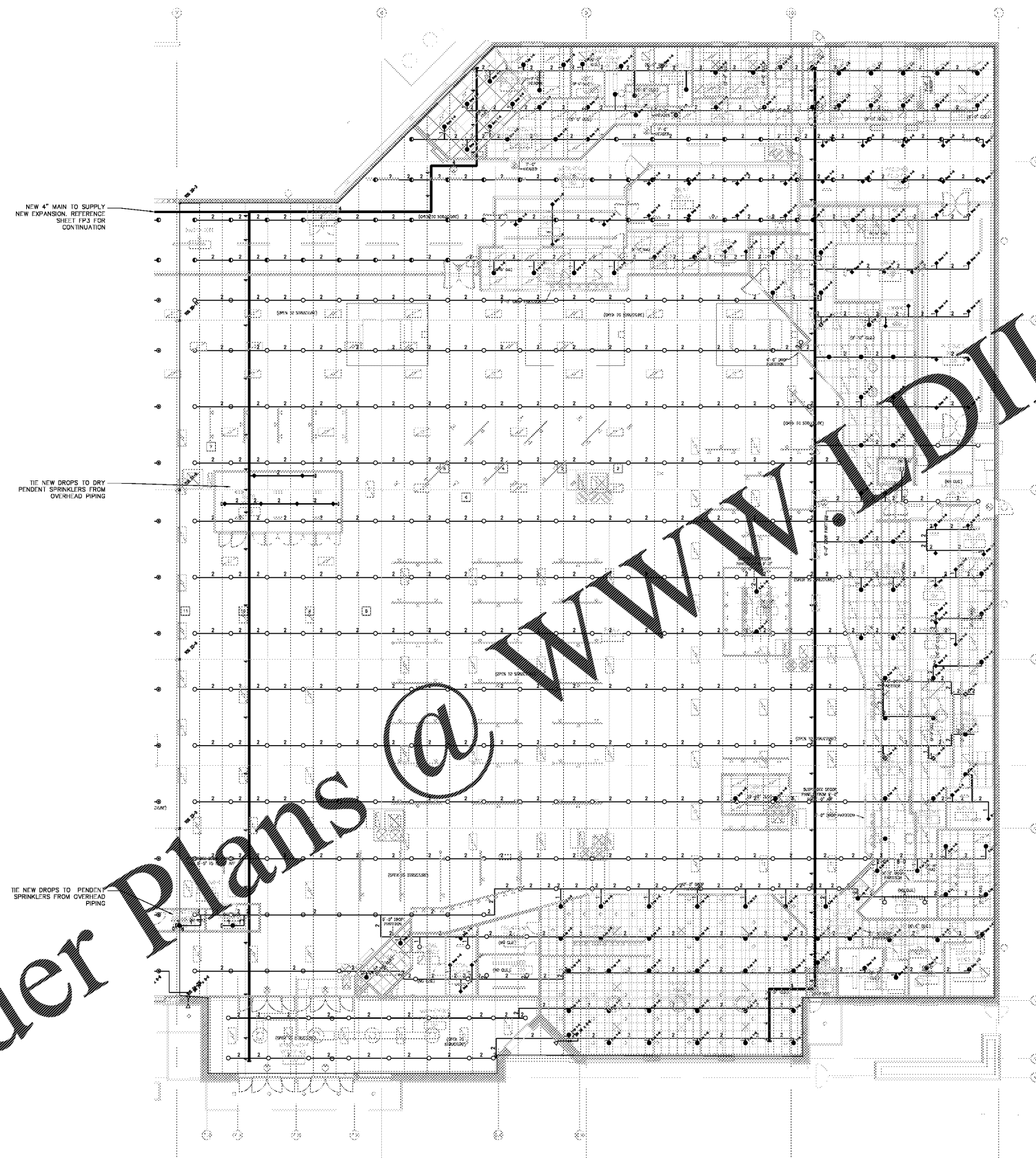
NO.	REV.	DESCRIPTION	DATE
1	-	PERMIT SET	12/08/18
2	-	BID SET	03/11/19

JOB: 2018041 SCALE:

SHEET NO.

**SYSTEM TWO
FIRE SPRINKLER
PIPING PLAN
EXPANSION AREA
FP4**

COPYRIGHT © 2018 NAOS DESIGN GROUP OF MISSISSIPPI, PLLC. THESE DRAWINGS OR PARTS THEREOF MAY NOT BE REPRODUCED IN ANY FORM OR BY ANY METHOD, FOR ANY PURPOSES, WITHOUT PRIOR WRITTEN CONSENT FROM NAOS DESIGN GROUP OF MISSISSIPPI, PLLC.



NEW 4" MAIN TO SUPPLY
NEW EXPANSION. REFERENCE
SHEET FP3 FOR
CONTINUATION

TIE NEW DROPS TO DRY
PENDENT SPRINKLERS FROM
OVERHEAD PIPING

TIE NEW DROPS TO PENDENT
SPRINKLERS FROM OVERHEAD
PIPING

Order Plans @ WWW.LDILine.com

1 FIRE SPRINKLER
EXPANSION PIPING PLAN
SCALE: 3/32" = 1"
NOR 11

ALL ARM-OVER PIPING TO BE 1" SCHED-40
UNLESS NOTED OTHERWISE