

THE DRAWINGS ON THIS SHEET ARE PROTOTYPICAL AND ARE FOR CONSTRUCTION USE ONLY

RESPONSIBILITY LEGEND

GC	= GENERAL CONTRACTOR PROVIDED AND INSTALLED
SB	= PROVIDED BY CASEWORK VENDOR INSTALLED BY GENERAL CONTRACTOR
LC	= PROVIDED BY KROGER INSTALLED BY GENERAL CONTRACTOR
CV	= PROVIDED BY CASEWORK VENDOR INSTALLED BY CASEWORK VENDOR

GENERAL NOTES


- REFER TO SITE SPECIFIC STARBUCKS PLANS ON SHEET 03.1.1, ARCHITECTURAL PLUMBING AND ELECTRICAL DRAWINGS FOR FURTHER SITE SPECIFIC INFORMATION.
- REFER TO THE LOAD KING DRAWINGS FOR FURTHER PROTOTYPICAL INFORMATION.



KROGER
STORE #473

2013 UNIVERSITY AVENUE
OXFORD, MISSISSIPPI 38655

A DEVELOPMENT OF
THE KROGER COMPANY



naos
Naos Design Group Of Mississippi, PLLC.

MARC BREETZ, ARCHITECT

645 Lakeland East Drive
Suite 101
Flowood, Mississippi 39232
(p) 303.759.5777
(f) 720.360.4281

ARCHITECT OF RECORD

THE DRAWINGS ON THIS SHEET ARE PROTOTYPICAL AND ARE FOR CONSTRUCTION USE ONLY



CDS
COMMERCIAL DESIGN SYSTEMS, INC.

1925 SW GALLERIE DRIVE
SHERWOOD, OREGON 97140
503.885.7900 / (703) 825.8282

INTERIOR DECOR



Pickering Firm, Inc.
Architecture - Engineering
Planning - Surveying

8775 Lenox Center Court, Suite 300
Memphis, TN 38115
901.726.9119

ENGINEER OF RECORD:
STRUCTURAL
MECHANICAL
ELECTRICAL
CIVIL ENGINEER



V-SOFT
INFRASTRUCTURE

1200 CHESTER ROAD
CHRYSTAL, OH 43015
T: 503-503-3009

LOW VOLTAGE



telgion
TELGION CORPORATION
10230 SOUTH SIXTH PLACE
SUITE 100
PHOENIX, AZ 85044
T: (602) 835-4428
HTTP://WWW.TELGION.COM

FIRE PROTECTION

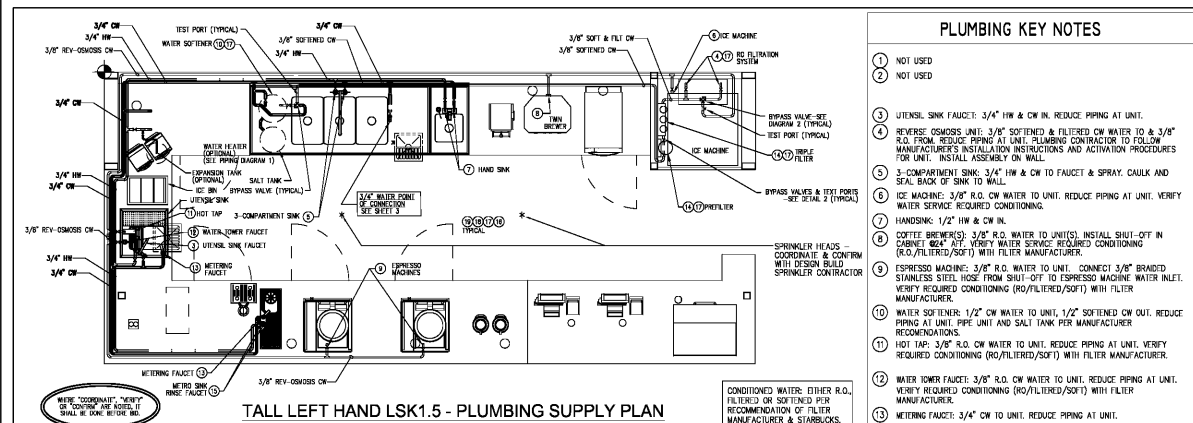
ISSUE LOG

NO.	REV.	DESCRIPTION	DATE
1	-	PERMIT SET	12/05/18
2	-	810 SET	03/21/19

JOB: 2018041 SCALE: NOT TO SCALE
SHEET NO.

13.2.1
STARBUCKS KIOSK
PROTOTYPICAL PLUMBING
SHOP DRAWINGS

Copyright © 2018 by Kroger Company. All rights reserved. This document is the property of Kroger Company. All other trademarks, trade names, and product names are the property of their respective owners. Reproduction of any part of this document without the prior written consent of Kroger Company is prohibited.



PLUMBING KEY NOTES

- NOT USED
- NOT USED
- UTENSIL SINK FAUCET: 3/4" HW & CW IN. REDUCE PIPING AT UNIT.
- REVERSE OSMOSIS UNIT: 3/8" SOFTENED & FILTERED CW WATER TO & 3/4" R.O. FROM REDUCE PIPING AT UNIT. PLUMBING CONTRACTOR TO FOLLOW MANUFACTURER'S INSTALLATION INSTRUCTIONS AND ACTIVATION PROCEDURES FOR UNIT. INSTALL ASSEMBLY ON WALL.
- 3-COMPARTMENT SINK: 3/4" HW & CW TO FAUCET & SPRAY. CAULK AND SEAL BACK OF SINK TO WALL.
- ICE MACHINE: 3/8" R.O. CW WATER TO UNIT. REDUCE PIPING AT UNIT. VERIFY WATER SERVICE REQUIRED CONDITIONING.
- HAND SINK: 1/2" HW & CW IN.
- COFFEE BREWER(S): 3/8" R.O. WATER TO UNIT(S). INSTALL SHUT-OFF IN CABINET. VERIFY WATER SERVICE REQUIRED CONDITIONING (R.O./FILTERED/SOFT) WITH FILTER MANUFACTURER.
- ESPRESSO MACHINE: 3/8" R.O. WATER TO UNIT. CONNECT 3/8" BRANDED STAINLESS STEEL HOSE FROM SHUT-OFF TO ESPRESSO MACHINE WATER INLET. VERIFY REQUIRED CONDITIONING (R.O./FILTERED/SOFT) WITH FILTER MANUFACTURER.
- WATER SOFTENER: 1/2" CW WATER TO UNIT. 1/2" SOFTENED CW OUT. REDUCE PIPING AT UNIT. PIPE UNIT AND SALT TANK PER MANUFACTURER.
- HOT TAP: 3/8" R.O. CW WATER TO UNIT. REDUCE PIPING AT UNIT. VERIFY REQUIRED CONDITIONING (R.O./FILTERED/SOFT) WITH FILTER MANUFACTURER.
- WATER LOWER FAUCET: 3/8" S.O. CW WATER TO UNIT. REDUCE PIPING AT UNIT. VERIFY REQUIRED CONDITIONING (R.O./FILTERED/SOFT) WITH FILTER MANUFACTURER.
- METERING FAUCET: 3/4" CW TO UNIT. REDUCE PIPING AT UNIT.
- PREFILTER & FINAL FILTER (QUAD): 1/2" SOFT CW WATER TO PREFILTER. THEN ON TO FINAL FILTERS. 3/8" FILTERED WATER OUT. PIPE BOTH UNITS WITH A BYPASS FOR FILTER CHANGE OUT. REDUCE PIPING AT UNITS.
- METRO BAR RINSE SINK FAUCET: 3/4" HW & CW IN. REDUCE PIPING AT UNIT.
- PRESSURE REGULATOR: FURNISH AND INSTALL IF PRESSURE EXCEEDS 65 PSI WITHIN STARBUCKS SPACE.
- VERIFY WITH LOCAL INSPECTOR (AHJ) IF BACKFLOW PREVENTERS ARE REQUIRED FOR MAIN WATER SERVICE TO KIOSK. BEFORE BID, REQUIRED BACKFLOW PREVENTERS SHALL BE FURNISHED, INSTALLED, & INSPECTED PER CODE & AHJ (NOT NECESSARILY SHOWN).
- CONFIRM PIPING CONNECTIONS TO ALL WATER TREATMENT SYSTEMS (LAURENCE.PINKERTON@PINKERTONFAIR.COM, CONTACT# 310-292-9000).
- PROVIDE THREADED FITTINGS AND UNIONS SO BYPASS PIPING ALIGNMENT CAN BE REMOVED IN THE FUTURE FOR REPAIR.
- RUN ALL PIPING CONCEALED (TYP).

PLUMBING GENERAL NOTES

- F&M COMPLETE AND OPERATING SYSTEM. ALL ITEMS ARE NOT NECESSARILY SHOWN.
- PLUMBING CONTRACTOR RESPONSIBLE FOR SITE INVESTIGATION PRIOR TO START OF WORK TO REVEAL FULL SCOPE OF WORK.
- COORDINATE WITH ELECTRICAL CONTRACTOR FOR POWER CONNECTION TO ALL PLUMBING EQUIPMENT.
- DIMENSIONS ARE TO FINISH FACE UNLESS OTHERWISE NOTED.
- REFER TO DETAIL SHEETS FOR PLUMBING FITTINGS LOCATED IN CASEWORK.
- COLD WATER SUPPLY LINES INSIDE CASEWORK & BAR AREA TO BE COVERED WITH 1/2" THICK SELF-FLAMING, SECTIONAL, CLOSED-CELL FOAM INSULATION. REFER TO SPECIFICATIONS FOR HOT WATER SUPPLY LINE INSULATION REQUIREMENTS.
- CONTRACTOR SHALL CONTACT WATER FILTER SUPPLIER 10 DAYS (MINIMUM) BEFORE THE TIME THAT THE FILTER SYSTEM IS TO BE STARTED UP.
- STOP VALVES SHALL BE F&M AT ALL PLUMBING FIXTURES EVEN IF NOT SHOWN IN PLAN.
- RUN ALL PIPING CONCEALED.

ABBREVIATIONS

AHJ: AUTHORITIES HAVING JURISDICTION.
F & M: FURNISH & INSTALL.
UNO: UNLESS NOTED OTHERWISE.
NWU: NUMBER NOT USED.

NOTE: ALL PLUMBING MUST BE DONE IN ACCORDANCE WITH LOCAL CODES.

WATER HEATER PIPING DIAGRAM

BYPASS PIPING DIAGRAM

KEY NOTES:

- NOT USED
- ESPRESSO MACHINE(S): F&M 1" PIPE FROM DRAIN TRAYS INDIRECT TO FLOOR SINK. PROVIDE THREADED DRAIN TRAY PIPE COUPLING.
- ICE MACHINE: F&M (2) SEPARATE 3/4" INSULATED DRAINS INDIRECT TO FLOOR SINK. DO NOT INTERCONNECT LINES.
- HAND SINK: F&M 1-1/2" DIRECT DRAIN.
- ICE SINK: F&M 1-1/2" INSULATED DRAIN PIPE INDIRECT TO FLOOR SINK.
- 3-COMPARTMENT SINK: F&M 1-1/2" DRAIN PIPE ASSEMBLY INDIRECT TO FLOOR SINK.
- WATER FILTER/CONDITIONER EQUIPMENT: F&M 3/8" RUBING INDIRECT TO FLOOR SINK.
- UTENSIL SINK: F&M 1-1/2" DRAIN PIPE INDIRECT TO FLOOR SINK.
- FLOOR SINK: CONTRACTOR SHALL F&M 3" FLOOR SINK (AND ALL ASSOCIATED PIPING, INCLUDING WASTE, TRAP, VENT & WASTE PIPING) AND CONNECT TO SANITARY & VENT PIPING PER A.H.J.
- METRO BAR RINSE SINK: F&M 1-1/2" DRAIN PIPE INDIRECT TO FLOOR SINK.
- BACKFLOW PREVENTERS: F&M WHEN REQUIRED BY A.H.J. F&M ANY NEEDED PIPING FROM BACKFLOW DEVICES DRAINS INDIRECT TO FLOOR SINKS (TYP)(NOT SHOWN).
- ALL SINK TAIL PIECES TO BE TYPE ABS UP TO AND INCLUDING THREADED COUPLING TO BASKET STRAINERS AT ALL SINKS.
- F&M ADDITIONAL PIPING INDIRECT TO DRAINS AS NEEDED (NOT SHOWN).
- CONFIRM PIPING WITH LAURENCE.PINKERTON@PINKERTONFAIR.COM CONTACT# 310-292-9000.
- CONTRACTOR SHALL F&M MOP SINK IF REQUIRED BY AHJ (AND ALL ASSOCIATED PIPING) AND CONNECT TO NEAREST SANITARY & VENT PIPING PER A.H.J.

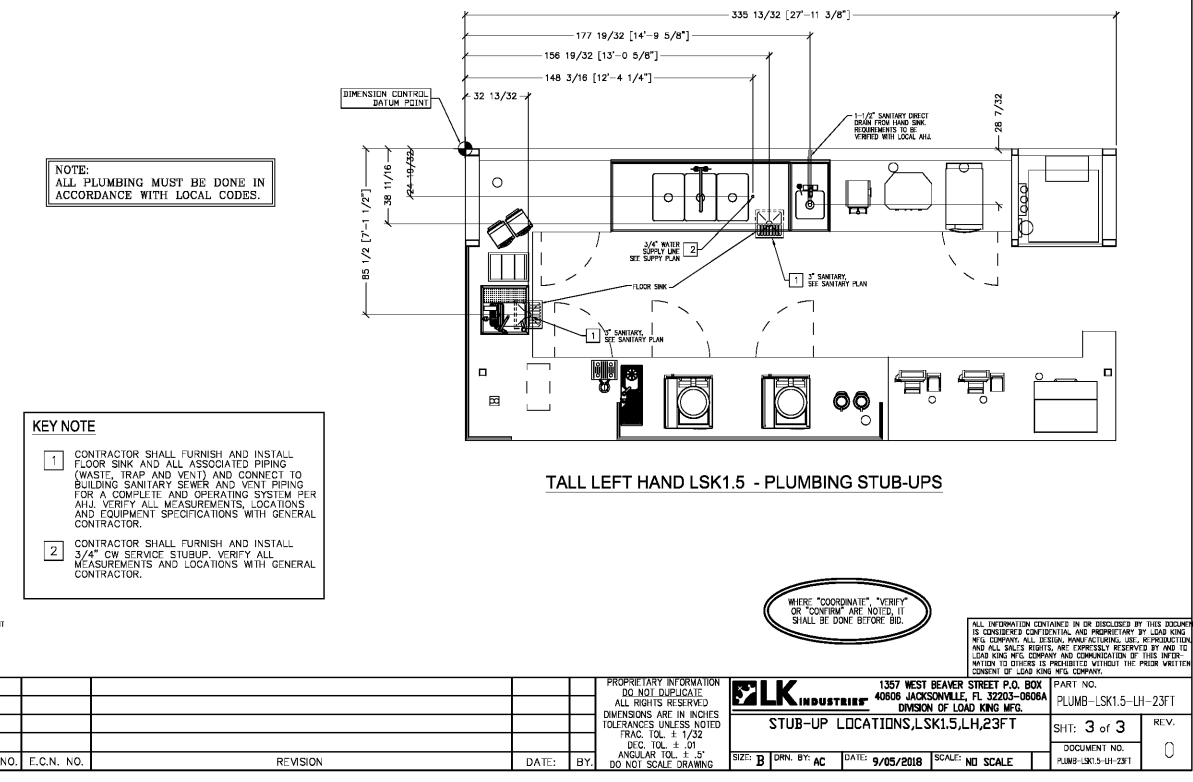
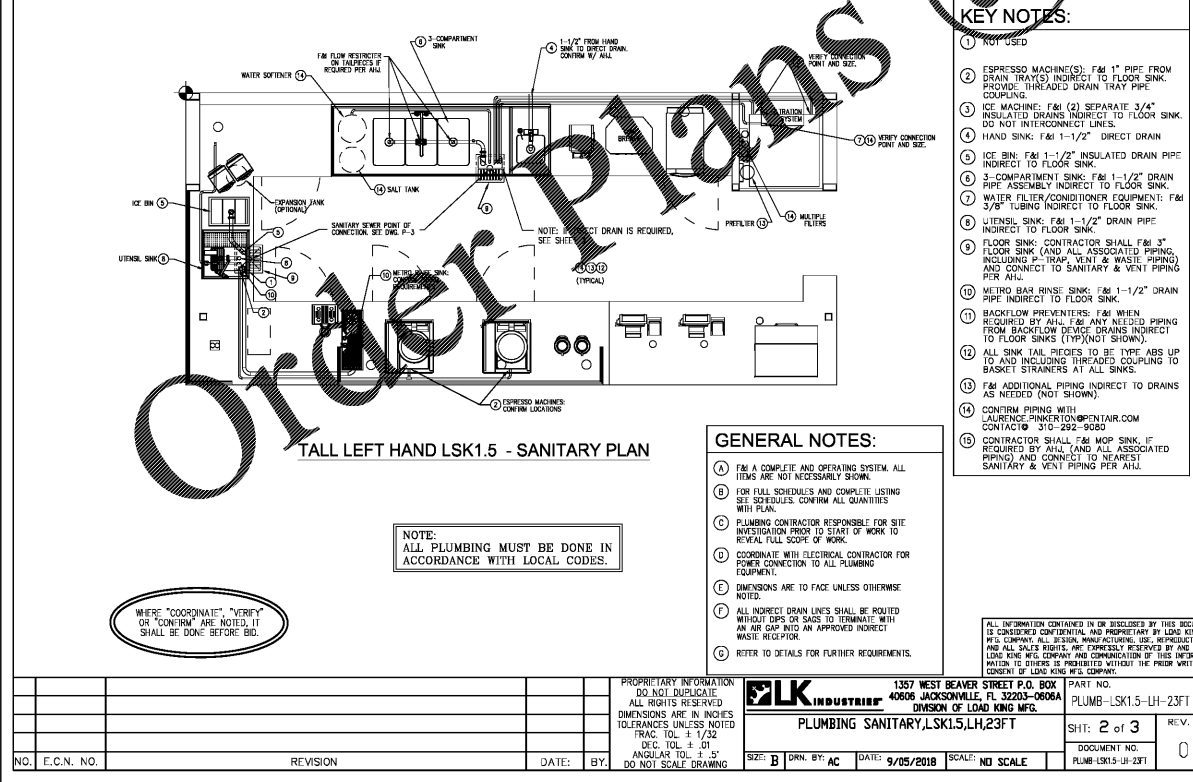
GENERAL NOTES:

- F&M COMPLETE AND OPERATING SYSTEM. ALL ITEMS ARE NOT NECESSARILY SHOWN.
- FOR FULL SCHEDULES AND COMPLETE LISTING SEE SCHEDULES. CONFIRM ALL QUANTITIES WITH PLAN.
- PLUMBING CONTRACTOR RESPONSIBLE FOR SITE INVESTIGATION PRIOR TO START OF WORK TO REVEAL FULL SCOPE OF WORK.
- COORDINATE WITH ELECTRICAL CONTRACTOR FOR POWER CONNECTION TO ALL PLUMBING EQUIPMENT.
- DIMENSIONS ARE TO FACE UNLESS OTHERWISE NOTED.
- ALL INDIRECT DRAIN LINES SHALL BE ROUTED WITHOUT DIPS OR SAGS TO TERMINATE WITH AN AIR GAP INTO AN APPROVED INDIRECT WASTE RECEPTOR.
- REFER TO DETAILS FOR FURTHER REQUIREMENTS.

NOTE: ALL PLUMBING MUST BE DONE IN ACCORDANCE WITH LOCAL CODES.

WHERE "COORDINATE", "VERIFY" OR "CONFIRM" ARE NOTED, IT SHALL BE DONE BEFORE BID.

ALL INFORMATION CONTAINED IN OR DISCLOSED BY THIS DOCUMENT IS CONSIDERED CONFIDENTIAL AND PROPRIETARY TO THE KROGER WEG COMPANY. ALL DESIGN, MANUFACTURING, USE, REPRODUCTION AND ALL SALES RIGHTS ARE EXPRESSLY RESERVED BY THE KROGER WEG COMPANY AND COMPANIES OF THIS INFORMATION TO OTHERS IS PROHIBITED WITHOUT THE WRITTEN CONSENT OF KROGER WEG COMPANY.



NO. E.C.N. NO. REVISION DATE: BY:

PROPRIETARY INFORMATION DO NOT DUPLICATE ALL RIGHTS RESERVED DIMENSIONS ARE IN INCHES TOLERANCES UNLESS NOTED TRAC. TOL. ± 1/32 DEC. TOL. ± .01 ANGULAR TOL. ± .5° DO NOT SCALE DRAWING

FLK INDUSTRIES 1357 WEST BEAVER STREET P.O. BOX 40606 JACKSONVILLE, FL 32203-0606 DIVISION OF LOAD KING MFG. PLUMB-SK1.5-LH-23FT

SCALE: NO SCALE

DATE: 9/05/2018

NO. E.C.N. NO. REVISION DATE: BY:

NO. E.C.N. NO. REVISION DATE: BY:

PROPRIETARY INFORMATION DO NOT DUPLICATE ALL RIGHTS RESERVED DIMENSIONS ARE IN INCHES TOLERANCES UNLESS NOTED TRAC. TOL. ± 1/32 DEC. TOL. ± .01 ANGULAR TOL. ± .5° DO NOT SCALE DRAWING

FLK INDUSTRIES 1357 WEST BEAVER STREET P.O. BOX 40606 JACKSONVILLE, FL 32203-0606 DIVISION OF LOAD KING MFG. STUB-UP LOCATIONS, LSK1.5, LH, 23FT

SCALE: NO SCALE

DATE: 9/05/2018

NO. E.C.N. NO. REVISION DATE: BY:

Order Plans

WWW.LDILine.com