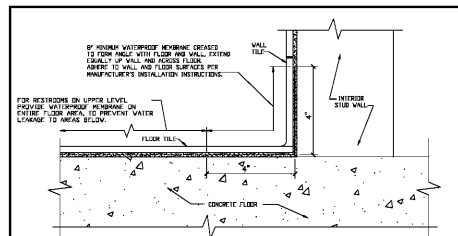


NOTES

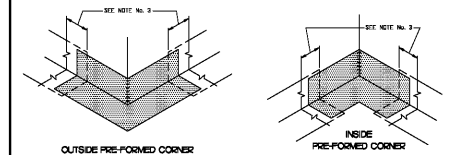
- DESIGNED FOR USE WITH GLASS DOOR END CASES. CASE CORNER GUARD REFER TO SECTION 11.41.01 PARAGRAPH 2.0 GENERAL. STIC FUTURE INSTALLATION IN SPECIFICATIONS. REFER TO EXISTING PLAN FOR QUANTITY AND LOCATIONS.
- CASE CORNER GUARD TO BE INSTALLED AFTER CASE HAS BEEN SET. INSTALL CASE GUARD AS CLOSE TO CASE AS POSSIBLE FOR MANUFACTURE'S INSTALLATION INSTRUCTIONS.

GLASS DOOR END CASE CORNER GUARD
MASTER SPECIFICATION DETAIL
 DATE: 6/8/15
 SCALE: NONE
 DRAWN: ZAW
 ORIGINAL ISSUE DATE: 6/8/15
 ASD-160A

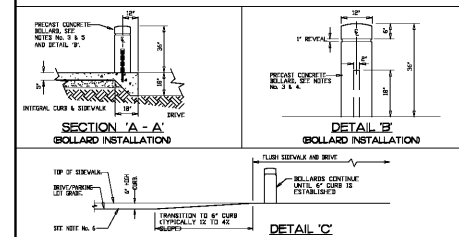
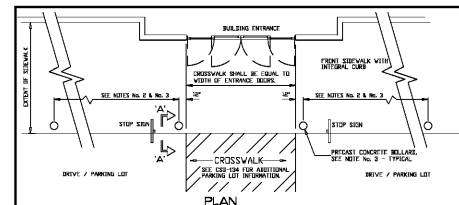


NOTES

- PROVIDE WATERPROOFING MEMBRANE OF POLYETHYLENE MATERIAL ON ALL EXPOSED WALLS OF RESTROOMS TO BEAD WITH CHANGING FROM RESTROOM TO ADJACENT AREAS. SEE SDC'S SPECIFICATIONS SECTION 09 50 00 FOR SETTING.
- ALL MEMBRANE AND BEAD COMPLETELY BENEATH SCIMS, CORNERS & CONNECTIONS. THE FLOOR & WALL TILES MAY BE APPLIED.
- OUTSIDE WATERPROOFING MEMBRANE BEYOND THE CORNER CORNER, ADHESIVE TO WALL AND FLOOR SURFACES FOR MANUFACTURE'S RECOMMENDATIONS.



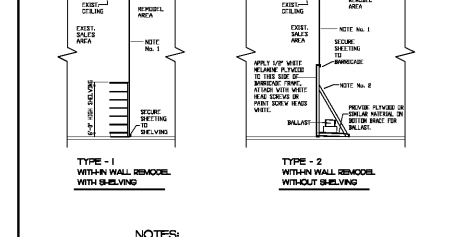
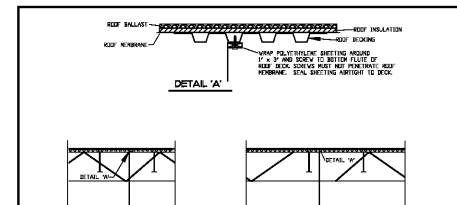
WATERPROOFING MEMBRANE FOR RESTROOMS
MASTER SPECIFICATION DETAIL
 DATE: 5/18/18
 SCALE: NONE
 DRAWN: ZAW
 ORIGINAL ISSUE DATE: 4/21/07
 ASD-164



GENERAL NOTES

- INSTALL BOLLARD WITH A CURB AS SHOWN. BOLLARD TO BE SET IN CONCRETE. BOLLARD TO BE SET IN CONCRETE. BOLLARD TO BE SET IN CONCRETE. BOLLARD TO BE SET IN CONCRETE.
- INSTALL BOLLARD WITH A CURB AS SHOWN. BOLLARD TO BE SET IN CONCRETE. BOLLARD TO BE SET IN CONCRETE. BOLLARD TO BE SET IN CONCRETE.
- INSTALL BOLLARD WITH A CURB AS SHOWN. BOLLARD TO BE SET IN CONCRETE. BOLLARD TO BE SET IN CONCRETE. BOLLARD TO BE SET IN CONCRETE.
- INSTALL BOLLARD WITH A CURB AS SHOWN. BOLLARD TO BE SET IN CONCRETE. BOLLARD TO BE SET IN CONCRETE. BOLLARD TO BE SET IN CONCRETE.

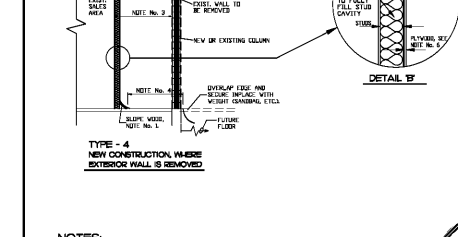
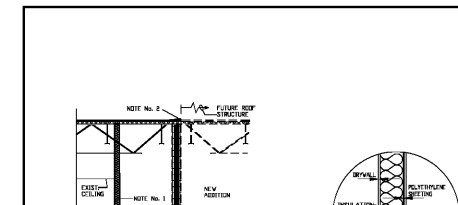
FLUSH WALK AT PEDESTRIAN CROSSING
MASTER SPECIFICATION DETAIL
 DATE: 11/23/15
 SCALE: NONE
 DRAWN: ZAW
 ORIGINAL ISSUE DATE: 6/14/06
 ASD-161



NOTES

- 3-MIL POLYETHYLENE SHEETING MUST BE USED - USE CLEAR OR TRANSPARENT SHEETING ONLY. BLACK SHEETING IS NOT ACCEPTABLE. USE FULL LENGTH OF CURB. BOLLARD TO BE SET IN CONCRETE.
- IF 4" X 4" V-GROOVE CHANNEL IS USED, PROVIDE BOLLARD ON BOTTOM BRACKETS TO BE SET IN CONCRETE. BOLLARD TO BE SET IN CONCRETE. BOLLARD TO BE SET IN CONCRETE.
- ANY PORTION OF THE BOLLARD SYSTEM WHICH EXTENDS TO POSSIBLE FREEZING TEMPERATURES MUST BE PROTECTED FROM FREEZING WITH HEAT OR INSULATION.

TEMPORARY CONSTRUCTION BARRIERS
MASTER SPECIFICATION DETAIL
 DATE: 06-01-07
 SCALE: NONE
 DRAWN: ESK/JD
 ORIGINAL ISSUE DATE: 6/14/07
 ASD-162A



NOTES

- IF WINDOW SIDE PROTECTION IS TO BE PROVIDED TO KEEP DECK WITHIN 4" TO 6" FROM EDGE WITH PROTECTION BETWEEN STAIRS. PROVIDE 4" X 4" V-GROOVE CHANNEL WITH 1/2" RADIUS. BOLLARD TO BE SET IN CONCRETE.
- IF 4" X 4" V-GROOVE CHANNEL IS USED, PROVIDE BOLLARD ON BOTTOM BRACKETS TO BE SET IN CONCRETE. BOLLARD TO BE SET IN CONCRETE. BOLLARD TO BE SET IN CONCRETE.
- ANY PORTION OF THE BOLLARD SYSTEM WHICH EXTENDS TO POSSIBLE FREEZING TEMPERATURES MUST BE PROTECTED FROM FREEZING WITH HEAT OR INSULATION.

TEMPORARY CONSTRUCTION PARTITION BARRIER
MASTER SPECIFICATION DETAIL
 DATE: 11/10/11
 SCALE: NONE
 DRAWN: ZAW
 ORIGINAL ISSUE DATE: 11/10/11
 ASD-162C

Order Plans @ www.LDILLING.com

Kroger
 KROGER
 STORE #473
 2013 UNIVERSITY AVENUE
 OXFORD, MISSISSIPPI 38655
 A DEVELOPMENT OF THE KROGER COMPANY

naos
 Naos Design Group Of Mississippi, PLLC.
 MARC BREETZ, ARCHITECT
 645 Lakeland East Drive Suite 101
 Flowood, Mississippi 39232
 (p) 303.759.5777
 (f) 720.360.4281
 ARCHITECT OF RECORD

CDS
 COMMERCIAL DESIGN SYSTEMS, INC.
 1925 SW GALEREA DRIVE
 SHERWOOD, OREGON 97140
 503.885.7000 (P) 503.825.8002
 INTERIOR DECOR

Pickering Firm, Inc.
 Architecture - Engineering
 Planning - Surveying
 6775 Lenox Center Court Suite 300
 Memphis, TN 38115
 901.726.0818
 ENGINEER OF RECORD:
 STRUCTURAL
 MECHANICAL
 ELECTRICAL
 CIVIL ENGINEER

V-SOFT
 INFRASTRUCTURE
 1650 CHESTER ROAD
 CHESTER, OH 43026
 T: 513-870-3000
 LOW VOLTAGE

telgian
 TELGIAN CORPORATION
 10230 SOUTH 50TH PLACE
 SUITE 100
 PHOENIX, AZ 85044
 T: (602) 835-4428
 HTTP://WWW.TELGIAN.COM
 FIRE PROTECTION

ISSUE LOG

NO.	REV.	DESCRIPTION	DATE
1	-	PERMIT SET	12/05/18
2	-	BID SET	03/21/19

JOB: 2018041 SCALE: NOT TO SCALE

SHEET NO.
A5.1.5
 ARCHITECTURAL STANDARD DETAILS (ASD)

COPYRIGHT © 2018 KROGER DESIGN GROUP OF MISSISSIPPI, PLLC. THESE DRAWINGS OR PART THEREOF MAY NOT BE REPRODUCED OR TRANSMITTED IN ANY FORM OR BY ANY MEANS, ELECTRONIC OR MECHANICAL, WITHOUT PRIOR WRITTEN PERMISSION FROM NAOS.