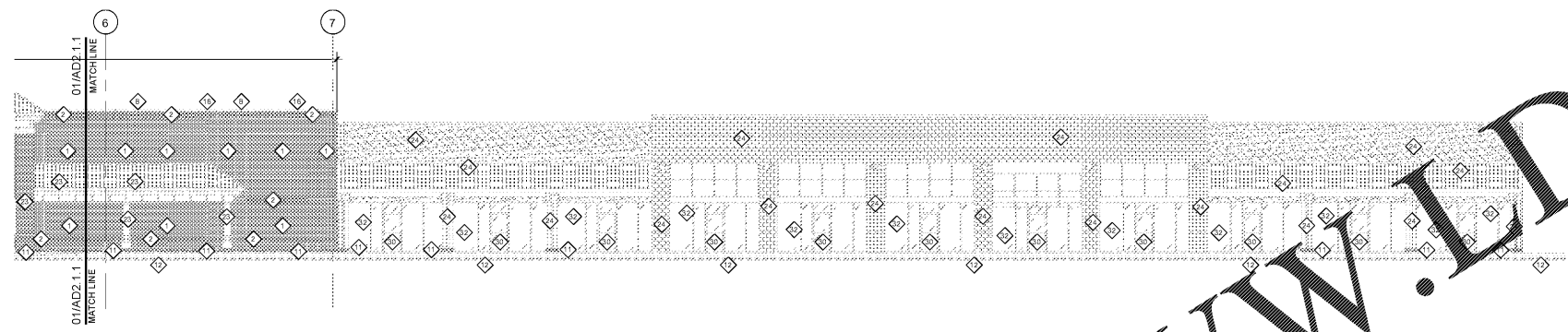
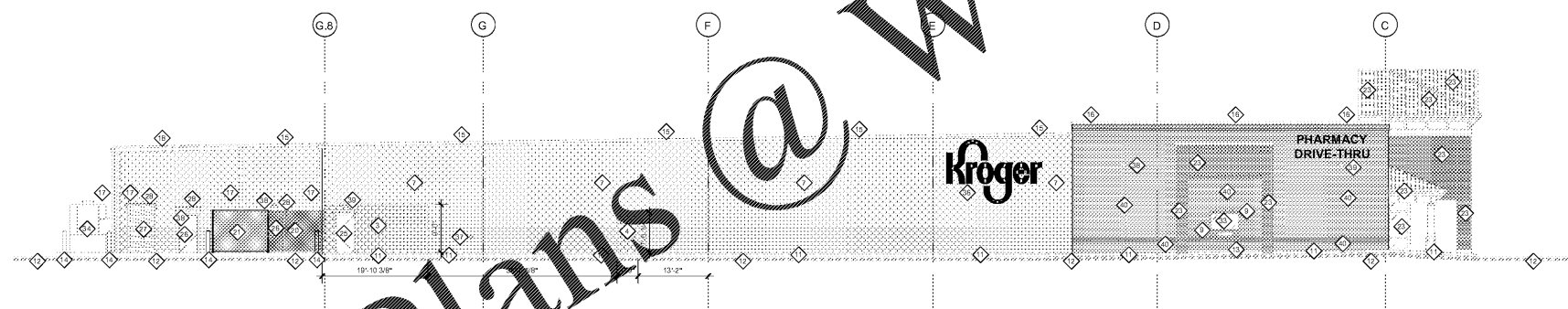


**PARTIAL DEMOLITION
01 SOUTH ELEVATION WEST**
SCALE: 3/32" = 1'-0"



**PARTIAL DEMOLITION
02 SOUTH ELEVATION EAST**
SCALE: 3/32" = 1'-0"



**DEMOLITION
03 WEST ELEVATION**
SCALE: 3/32" = 1'-0"

LEGEND, SYMBOLS AND NOTES APPLY TO BOTH AD2.1.1 AND AD2.1.2 SHEET IS SOME ITEMS MAY NOT APPEAR ON THIS SHEET

GENERAL NOTES

1. PREPARE AND/OR REPAIR MATERIALS TO RECEIVE NEW FINISHES TO INCLUDE SCRAPING, SANDING, REPAIRING, CLEANING, PRIMING, ETC. AS NECESSARY FOR A SMOOTH, CONTROLLED FINISH. TUCK POINT MASONRY JOINTS AND RE-CALK AS NEEDED BEFORE PAINTING.
2. REMOVE ALL CONTROL JOINT SEALANT, CLEAN, PREP AND RESEAL WITH BACKER ROD.
3. REMOVE ALL WEATHER STRIPPING AT EXISTING EXTERIOR HOLLOW METAL DOORS TO REMAIN.
4. REFER TO A.S.1 SERIES FOR ARCHITECTURAL STANDARD DETAILS (ASD'S) AND GENERAL INSTALLATION DETAILS (GSD'S).

KEYED NOTES

1. REMOVE AND SALVAGE THE EXISTING BRICK FOR PATCH IN INFILL. SEE A2.1 SERIES FOR INFILL LOCATIONS. THE GENERAL CONTRACTOR IS TO SALVAGE A MINIMUM OF 2,000 SQUARE FEET OF BRICK. CMU BACKING IS TO REMAIN. RE: STRUCTURAL DRAWINGS.
2. REMOVE EXISTING SOLIDER COURSE. CMU BACKING TO REMAIN. RE: STRUCTURAL DRAWINGS.
3. REMOVE PORTION OF EXISTING CMU BACKING FROM NEW PICKUP EXPANSION AREA.
4. REMOVE A PORTION OF EXISTING CURB FOR NEW DOOR.
5. REMOVE MASONRY AS NECESSARY FOR NEW FIRE DEPARTMENT ACCESS.
6. REMOVE THE EXISTING CURB.
7. EXISTING CMU TO REMAIN, TUCK POINT AS NECESSARY AND REPAIR FOR PAINT.
8. REMOVE EXISTING COURSE COURSES OF MASONRY. RE: STRUCTURAL DRAWINGS.
9. REMOVE MASONRY AND BRICK AS NECESSARY TO INSTALL NEW PHARMACY WINDOW AND COMPONENTS. RE: ASD-S.
10. PATCH AND REPAIR EXISTING CONCRETE TRUCK WELL WALLS.
11. REMOVE EXISTING CONCRETE CURB.
12. REMOVE EXISTING CONCRETE CURB AND GUTTER. RE: CIVIL DRAWINGS.
13. REMOVE EXISTING BOLLARD.
14. STRAIGHTEN EXISTING BOLLARD TO REMAIN AND PREP FOR PAINT.
15. REMOVE EXISTING METAL COPING.
16. REMOVE EXISTING METAL CAP FLASHING.
17. REMOVE EXISTING METAL DOWNSPOUT.
18. REMOVE EXISTING METAL GUTTER AND FLASHING.
19. REMOVE EXISTING METAL DOWNSPOUT. EXISTING PVC STORM PIPE BELOW GRADE TO REMAIN. RE: CIVIL DRAWINGS.
20. REMOVE A PORTION OF CHAIN LINK FENCE.
21. EXISTING CHAIN LINK FENCE TO REMAIN.
22. EXISTING ARMCO STYLE GUARD RAIL TO REMAIN, PREP FOR PAINT.
23. REMOVE ALL COMPONENTS OF THE EXISTING CANOPY, INCLUDING BUT NOT LIMITED TO FINISHES, FRAMING, STRUCTURE, COLUMNS, ROOFING, FLASHING, ETC. PATCH AND REPAIR EXISTING WALL BEHIND CANOPY.
24. REMOVE ALL COMPONENTS OF THE RETAIL BUILDING, INCLUDING BUT NOT LIMITED TO FINISHES, FRAMING, STRUCTURE, ROOFING, FLASHING, PIPING, CONDUIT, METERS, SIGNAGE, ETC.
25. REMOVE EXISTING HOLLOW METAL DOOR AND FRAME.
26. EXISTING HOLLOW METAL DOOR TO REMAIN, PREP FOR PAINT.
27. EXISTING OVERHEAD DOOR TO REMAIN, PREP FOR PAINT.
28. EXISTING DOOR HOOD TO REMAIN, PREP FOR PAINT.
29. REMOVE EXISTING AUTO ENTRY DOORS.
30. REMOVE EXISTING STOREFRONT DOOR AND FRAME.
31. REMOVE EXISTING DOCK SEALS AND BUMPERS. PREP WALL FOR REPLACEMENT SEALS AND BUMPERS.
32. REMOVE EXISTING STOREFRONT GLAZING.
33. REMOVE EXISTING PHARMACY WINDOW AND COMPONENTS.
34. EXISTING COMPACTOR TO REMAIN, PREP FOR PAINT.
35. EXISTING SIGN TO BE REMOVED BY KROGER SIGN CONTRACTOR.
36. EXISTING SIGN TO BE REMOVED BY KROGER SIGN CONTRACTOR. PATCH AND REPAIR EXISTING WALL BEHIND SIGNAGE. REFER TO ELECTRICAL DRAWINGS FOR POWER AND CIRCUITING. COORDINATE WITH KROGER PROJECT MANAGER AND OWNERS SIGN CONSULTANT.
37. REMOVE EXISTING FIRE DEPARTMENT CONNECTION. RE: FIRE SPRINKLER DRAWINGS.
38. REMOVE EXISTING EXTERIOR LIGHTING. REUSE EXISTING LOCATION. RE: ELECTRICAL DRAWINGS.
39. REMOVE EXISTING EXTERIOR LIGHTING. RE: ELECTRICAL DRAWINGS.
40. EXISTING MASONRY TO REMAIN. EXISTING MASONRY IS TO BE POWER WASHED. ALL GROUT IS TO BE TUCK POINTED AFTER POWER WASH.



**KROGER
STORE #473**

2013 UNIVERSITY AVENUE
OXFORD, MISSISSIPPI 38655

A DEVELOPMENT OF:
THE KROGER COMPANY



**Naos Design
Group Of
Mississippi,
PLLC.**

MARC BREETZ
ARCHITECT

645 Lakeland East Drive
Suite 101
Flowood, Mississippi 39232
(p) 303.759.5777
(f) 770.360.4281

ARCHITECT OF RECORD

**CDS
COMMERCIAL DESIGN SYSTEMS,
INC.**
13825 SW GALBREATH DRIVE
SHERWOOD, OREGON 97140
503.885.7000 (P) 503.825.8902
INTERIOR DECOR

Pickering Firm, Inc.
Architecture - Engineering
Planning - Surveying
6775 Lenox Center Court, Suite 300
Memphis, TN 38115
901.726.0810

ENGINEER OF RECORD:
STRUCTURAL
MECHANICAL
ELECTRICAL
CIVIL ENGINEER

**V-SOFT
INFRASTRUCTURE**
1860 CHESTER ROAD
CHICKEN, OH 43016
T: 503-670-3069
LOW VOLTAGE

telgian
TELGIAN CORPORATION
10230 SOUTH 50TH PLACE
SUITE 100
PHOENIX, AZ 85044
T: (677) 836-4428
HTTP://WWW.TELGIAN.COM
FIRE PROTECTION

ISSUE LOG

NO.	REV.	DESCRIPTION	DATE
1	-	PERMIT SET	12/05/18
2	-	BID SET	03/21/19

JOB: 2018041 SCALE: 3/32" = 1'-0"

SHEET NO.
AD2.1.1
DEMOLITION EXTERIOR
ELEVATIONS

COPYRIGHT © 2018 BY TELGIAN CORPORATION OF MISSISSIPPI, PLLC. THESE DRAWINGS OR PART THEREOF MAY NOT BE REPRODUCED OR TRANSMITTED IN ANY FORM OR BY ANY MEANS, ELECTRONIC OR MECHANICAL, WITHOUT THE WRITTEN CONSENT OF TELGIAN CORPORATION.