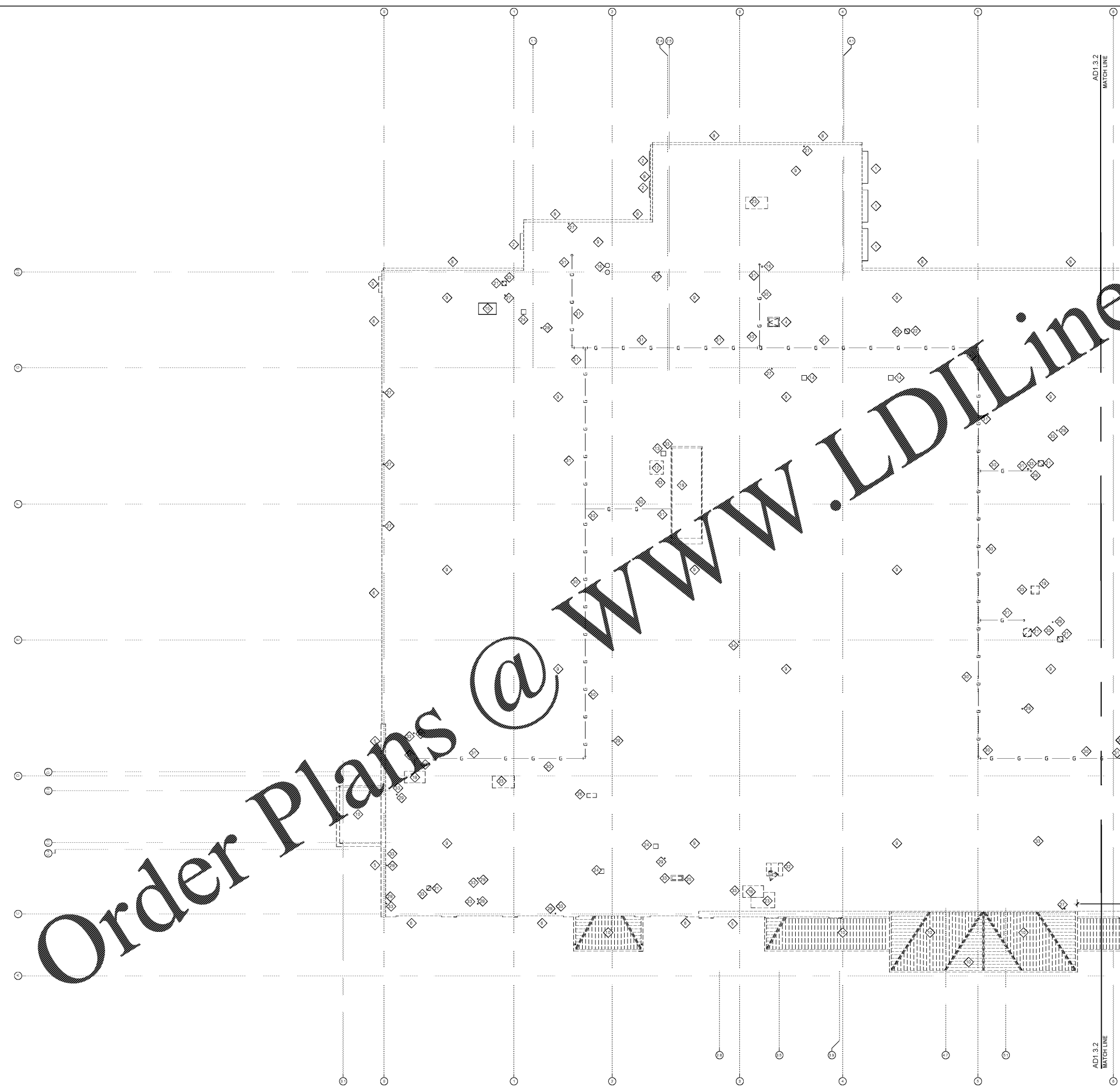


Order Plans @

WWW.LDILine.com



- SYMBOL LEGEND**
- EXISTING ROOF TOP EQUIPMENT
 - ROOF TOP EQUIPMENT TO BE DEMOLISHED
 - - - EXISTING GAS LINE, RE: MECHANICAL DRAWINGS
 - - - DEMOLISHED GAS LINE, RE: MECHANICAL DRAWINGS

- GENERAL NOTES**
1. SEAL ALL ROOF PENETRATIONS.
 2. ALL DEBRIS AND FOREIGN MATTER SHOULD BE REMOVED FROM THE ROOF'S SURFACE AND DISPOSED PROPERLY OFF-SITE.
 3. REFER TO A-1 SERIES FOR ARCHITECTURAL STANDARD DETAILS (ASD'S) AND GENERAL INSTALLATION DETAILS (GID'S).

- KEYED NOTES**
1. EXISTING DOCK HOOD TO REMAIN.
 2. EXISTING DOOR HOOD TO REMAIN.
 3. REMOVE EXISTING DOOR HOOD.
 4. REMOVE EXISTING ROOF HATCH AND PREP FOR DECKING INFILL. RE: STRUCTURAL DRAWINGS.
 5. REMOVE EXISTING CHIMNEY FLASHING.
 6. REMOVE EXISTING CHIMNEY STOP FLASHING.
 7. REMOVE EXISTING CHIMNEY AND PREP FOR DECKING INFILL. RE: STRUCTURAL DRAWINGS.
 8. REMOVE EXISTING GLEVEL STOP, CUTTER, DOWNSPOUT AND FLASHING.
 9. REMOVE EXISTING BALLAST AND ROOFING MEMBRANE. PREP FOR DECKING INFILL AND METAL DECKING. PREP FOR NEW INSULATION AND MEMBRANE.
 10. REMOVE EXISTING CANOPY IN ITS ENTIRETY, INCLUDING BUT NOT LIMITED TO ROOFING, INSULATION FLASHING, DECKING, STRUCTURE, ROOF TOP UNITS, EXHAUST FANS, GAS PIPING, ETC.
 11. REMOVE EXISTING RETAIL BUILDING IN ITS ENTIRETY, INCLUDING BUT NOT LIMITED TO ROOFING, INSULATION FLASHING, DECKING, STRUCTURE, ROOF TOP UNITS, EXHAUST FANS, GAS PIPING, ETC.
 12. REMOVE EXISTING REFRIGERATION CONDENSER UNIT AND CURB. PREP FOR DECKING INFILL. RE: STRUCTURAL DRAWINGS.
 13. REMOVE EXISTING REFRIGERATION PIPE CHASE. PREP FOR DECKING INFILL. RE: STRUCTURAL DRAWINGS.
 14. REMOVE METAL DECK, INSULATION, AND ROOFING AS NECESSARY TO INSTALL NEW REFRIGERATION OR MECHANICAL PIPE CHASE PER ASD-78. RE: REFRIGERATION AND MECHANICAL DRAWINGS.
 15. EXISTING ROOF TOP UNIT AND CURB TO REMAIN. RE: MECHANICAL DRAWINGS.
 16. EXISTING MECHANICAL FLUE TO REMAIN. RE: MECHANICAL DRAWINGS.
 17. REMOVE EXISTING ROOF TOP UNIT AND CURB.
 18. REMOVE EXISTING ROOF TOP UNIT AND CURB. PREP FOR DECKING INFILL. RE: STRUCTURAL DRAWINGS.
 19. REMOVE EXISTING MAKE UP AIR UNIT AND CURB. PREP FOR DECKING INFILL. RE: STRUCTURAL DRAWINGS.
 20. REMOVE EXISTING EXHAUST FAN AND CURB.
 21. REMOVE EXISTING EXHAUST FAN AND CURB. PREP FOR DECKING INFILL. RE: STRUCTURAL DRAWINGS.
 22. REMOVE EXISTING EXHAUST FAN AND CURB. PREP FOR NEW EXHAUST FAN AND CURB. RE: ASD-88 AND STRUCTURAL AND MECHANICAL DRAWINGS.
 23. REMOVE METAL DECK, INSULATION AND ROOFING AS NECESSARY TO INSTALL NEW ROOF TOP UNIT. RE: ASD-64C AND MECHANICAL DRAWINGS.
 24. REMOVE METAL DECK, INSULATION AND ROOFING AS NECESSARY TO INSTALL NEW ROOF EXHAUST FAN. RE: ASD-88 AND MECHANICAL DRAWINGS.
 25. REMOVE EXISTING CONDENSING UNIT AND CURB. PREP FOR DECKING INFILL. RE: STRUCTURAL DRAWINGS.
 26. REMOVE METAL DECK, INSULATION AND ROOFING AS NECESSARY TO INSTALL NEW CONDENSING UNIT AND CURB. RE: ASD-88 AND MECHANICAL DRAWINGS.
 27. EXISTING PLUMBING VENT TO REMAIN. RE: PLUMBING DRAWINGS.
 28. REMOVE EXISTING PLUMBING VENT AND PREP FOR DECKING INFILL. RE: STRUCTURAL DRAWINGS.
 29. REMOVE METAL DECK, INSULATION, AND ROOFING AS NECESSARY TO INSTALL NEW PLUMBING VENT. RE: PLUMBING DRAWINGS.
 30. EXISTING GAS LINES TO REMAIN. PREP FOR PAINT. RE: MECHANICAL DRAWINGS.
 31. REMOVE EXISTING GAS PIPING. RE: MECHANICAL DRAWINGS.
 32. REMOVE EXISTING SATELLITE DISH AND BALLASTED BASE. RE: ELECTRICAL DRAWINGS.
 33. THE GENERAL CONTRACTOR IS RESPONSIBLE FOR THE ABATEMENT AND REMOVAL OF THE FOLLOWING ITEMS PER THE ASBESTOS REPORT:
 - ASBESTOS-CONTAINING SEALANT ASSOCIATED WITH THE WHITE CEMENT ON THE ROOF AROUND PENETRATIONS
 - BLACK CEMENT ON THE ROOF AROUND PENETRATIONS
 - GRAY CEMENT ON THE ROOF AROUND PENETRATIONS
 - CONTAINS ASBESTOS IN CONCENTRATIONS LESS THAN 1%.
 34. REMOVE METAL DECK, INSULATION, AND ROOFING AS NECESSARY TO INSTALL NEW PLUMBING ROOF HYDRANT. RE: PLUMBING DRAWINGS.

KROGER
STORE #473

2013 UNIVERSITY AVENUE
OXFORD, MISSISSIPPI 38655

A DEVELOPMENT OF:
THE KROGER COMPANY

naos
Naos Design Group Of Mississippi, PLLC.

MARC BREETZ, ARCHITECT

645 Lakeland East Drive Suite 101
Flowood, Mississippi 39232
(p) 303.759.5777
(f) 720.360.4281

ARCHITECT OF RECORD

CDS
COMMERCIAL DESIGN SYSTEMS, INC.

1325 SW GALBREATH DRIVE
SHERWOOD, OREGON 97140
503.885.7000 (P)503.825.8002

INTERIOR DECOR

Pickering Firm, Inc.
Architecture - Engineering
Planning - Surveying

6775 Lenox Center Court, Suite 300
Memphis, TN 38115
901.726.0818

ENGINEER OF RECORD:
STRUCTURAL
MECHANICAL
ELECTRICAL
CIVIL ENGINEER

VSOFT
INFRASTRUCTURE

1650 CHESTER ROAD
CHICKEN, OH 43016
T: 503-670-3069

LOW VOLTAGE

telgian
TELGIAN CORPORATION
10230 SOUTH 50TH PLACE
SUITE 100
PHOENIX, AZ 85044
T: 6771.836.4426
HTTP://WWW.TELGIAN.COM
FIRE PROTECTION

ISSUE LOG

NO.	REV.	DESCRIPTION	DATE
1	-	PERMIT SET	12/06/18
2	-	BID SET	03/21/19

JOB: 2018041 SCALE: 3/32" = 1'-0"

SHEET NO.

AD1.3.1
PARTIAL DEMOLITION
ROOF PLAN WEST

COPYRIGHT © 2018 NAOS DESIGN GROUP OF MISSISSIPPI, PLLC. THESE DRAWINGS OR ANY PART THEREOF MAY NOT BE REPRODUCED, COPIED, OR TRANSMITTED IN ANY FORM OR BY ANY MEANS, ELECTRONIC OR MECHANICAL, WITHOUT PRIOR WRITTEN CONSENT FROM NAOS.

PARTIAL DEMOLITION
01 ROOF PLAN WEST
SCALE: 3/32" = 1'-0"

