

**CMU LINTEL SCHEDULE**

WIDTH (W)	CLEAR SPAN	DEPTH (D)	BOTTOM REIN.	TOP REIN.	STIRRUPS AND SPACING
8"	UP TO 3'-0"	8"	2 # 5	NONE	NONE
8"	3'-0" TO 6'-0"	16"	2 # 5	2 # 5	#3 AT 8" o.c.
8"	6'-0" TO 9'-0"	16"	2 # 5	2 # 5	#3 AT 8" o.c.
8"	9'-0" TO 12'-0"	24"	2 # 6	2 # 6	#3 AT 8" o.c.
8"	12'-0" TO 14'-0"	24"	2 # 7	2 # 7	#3 AT 8" o.c.

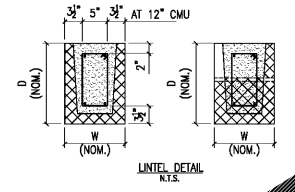
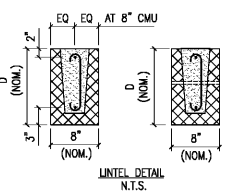
- REFER TO CMU WALL REINFORCING DIAGRAM FOR SPLICES IN VERTICAL REINFORCEMENT
- BOND BEAM REIN. REFER TO RELEVANT DETAILS FOR REINFORCEMENT.
- EXTEND GROUDED LINTEL A MINIMUM OF 2'-0" BEYOND FACE OF OPENING EACH SIDE FOR STRAIGHT LINTEL REINFORCING AND 1'-4" FOR LINTEL REINFORCING WITH STANDARD ACI HOOK
- USE LINTEL U-BLOCKS ONLY FOR BOTTOM COURSE OF LINTEL BEAMS.
- CONTINUE VERTICAL WALL REINFORCING OVER OPENING.
- ANCHOR VERTICAL REINFORCING INTO LINTEL BEAM WITH STANDARD ACI HOOK.
- ALL VERTICAL BARS AT SCHEDULED JAMBS TO BE FULL HEIGHT, ALSO PROVIDE (4) VERTICAL BARS AT END OF WALL AND CONSTRUCTION JOINT.
- WHERE HORIZONTAL REINFORCING IS TERMINATED BY OPENING OR CONTROL JOINT, PROVIDE STANDARD ACI HOOK WITH VERTICAL WALL REINFORCING IN THE END CELLS.
- VERTICAL REINFORCEMENT PER RELEVANT DETAILS.
- CONSTRUCTION JOINT - SEE 02/S3.4 FOR DETAIL

**CMU LINTEL SCHEDULE**

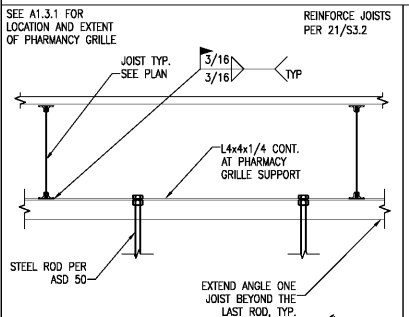
WIDTH (W)	CLEAR SPAN	DEPTH (D)	BOTTOM REIN.	TOP REIN.	STIRRUPS AND SPACING
12"	UP TO 3'-0"	8"	2 # 5	NONE	NONE
12"	3'-0" TO 6'-0"	16"	2 # 5	2 # 5	#3 AT 8" o.c.
12"	6'-0" TO 9'-0"	16"	2 # 5	2 # 5	#3 AT 8" o.c.
12"	9'-0" TO 12'-0"	24"	2 # 6	2 # 6	#3 AT 8" o.c.
12"	12'-0" TO 14'-0"	24"	2 # 7	2 # 7	#3 AT 8" o.c.
12"	14'-0" TO 16'-0"	32"	2 # 8	2 # 8	#3 AT 8" o.c.

**CMU JAMB SCHEDULE**

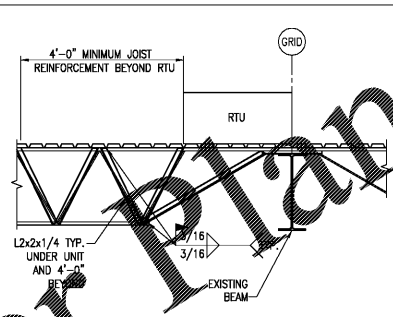
HEIGHT FEET	WIDTH FEET	3'-0"	6'-0"	9'-0"	12'-0"
UP TO 8'-0"		2 # 5	4 # 5	4 # 5	6 # 5
8'-0" TO 10'-0"		2 # 5	4 # 5	6 # 5	6 # 5
10'-0" TO 12'-0"		2 # 5	4 # 5	6 # 5	6 # 5
12'-0" TO 14'-0"		4 # 5	6 # 5	6 # 5	8 # 5
14'-0" TO 16'-0"		4 # 5	6 # 5	8 # 5	8 # 5



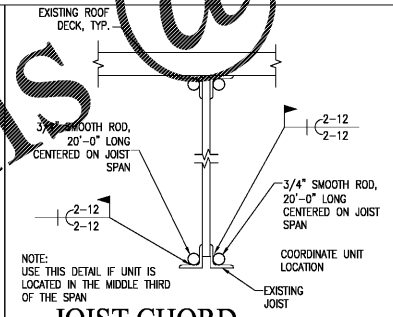
**01 TYP. OPENING IN CMU WALL DETAIL**  
1/2"-1'-0" S-DET402



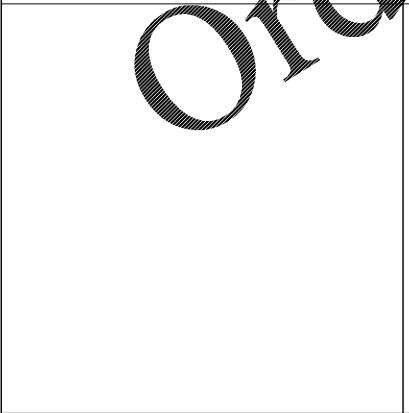
**09 RTU SUPPORT AT EXISTING ROOF**  
1"-1'-0" S-DET403



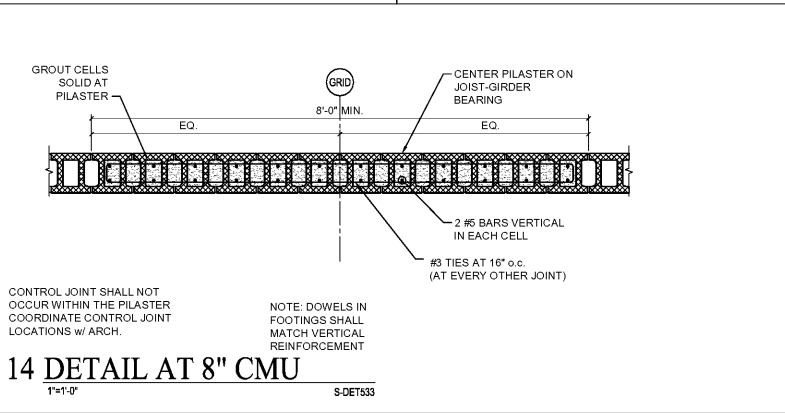
**10 JOIST WEB REINFORCEMENT**  
1/2"-1'-0" S-DET404



**11 JOIST CHORD REINFORCEMENT AT RTU/CONDENSER**  
3"-1'-0" S-DET405



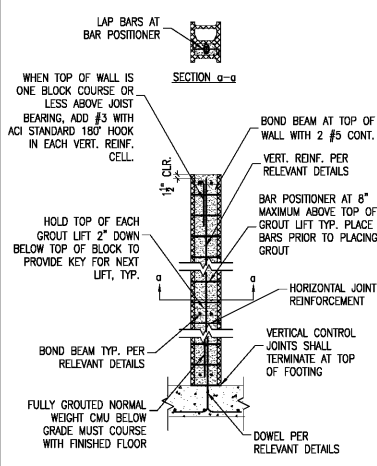
**14 DETAIL AT 8" CMU**  
1"-1'-0" S-DET533



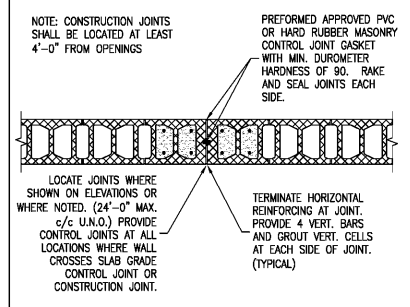
**15 DETAIL AT TUBE CONNECTION TO CMU**  
1"-1'-0" S-DET416

**LAP SCHEDULE**

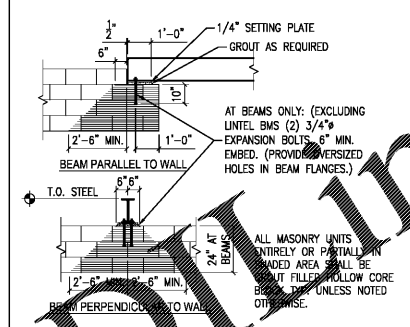
BAR SIZE	LAP
#3	18"
#4	24"
#5	30"
#6	36"
#7	42"



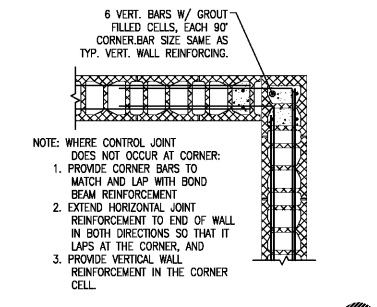
**04 CMU WALL REINFORCING DIAGRAM 05 SECTION**  
1"-1'-0" S-DET401



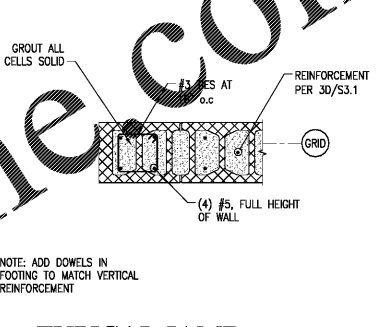
**DETAIL AT 02 CONSTRUCTION JOINT**  
3/4"-1'-0" S-DET400



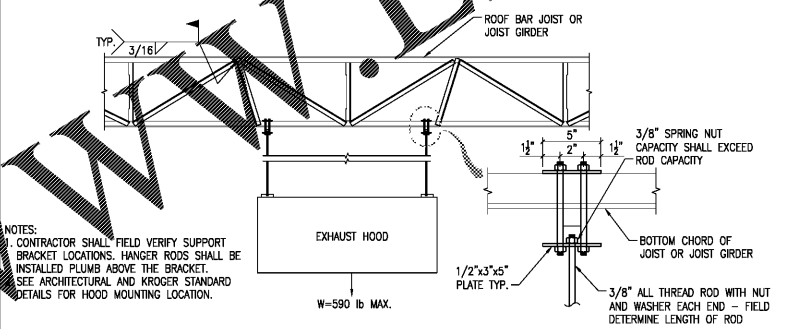
**05 SECTION**  
3/8"-1'-0" S-DET409



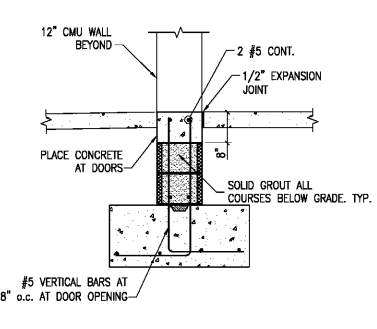
**TYP. DETAIL AT 03 CMU WALL CORNER**  
3/4"-1'-0" S-DET405



**06 TYPICAL JAMB PLAN DETAIL**  
1"-1'-0" S-DET407



**07 EXHAUST HOOD SUPPORT**  
3/8"-1'-0" S-DET215

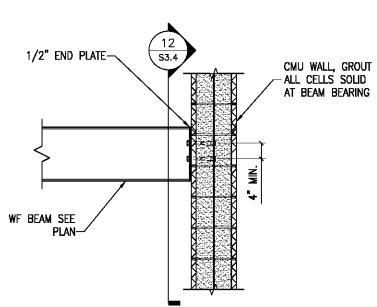
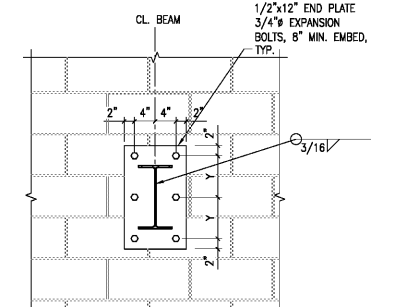


**08 DETAIL AT DOOR SILL**  
3/4"-1'-0" S-DET080

**WF BEAM CONNECTION SCHEDULE TO FACE OF CMU WALL**

NOMINAL BEAM SIZE	NUMBER OF BOLTS	Y
W8	4	4"
W10	4	6"
W14	6	8"
W16	6	8"

**12 BEAM CONNECTION DETAIL**  
1"-1'-0" S-DET254

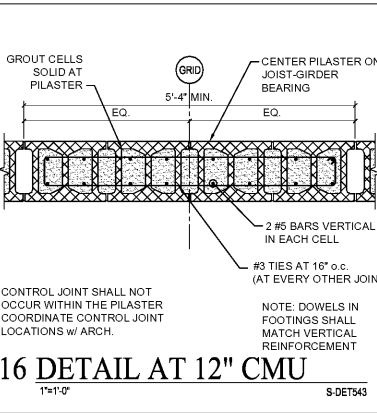
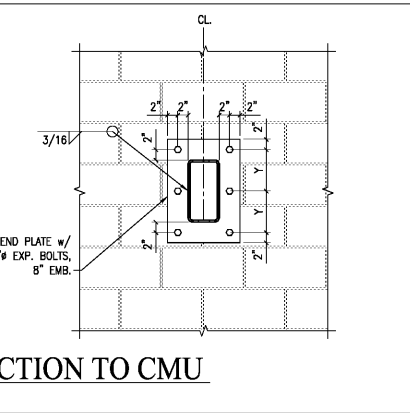


**13 BEAM BEARING AT CMU WALL**  
3/4"-1'-0" S-DET257

**TUBE BEAM CONNECTION SCHEDULE TO FACE OF CMU WALL**

TUBE DEPTH	NUMBER OF BOLTS	Y
4	4	6"
6	4	6"
8	4	6"
10	6	6"
12	6	6"
14	6	6"

**15 DETAIL AT TUBE CONNECTION TO CMU**  
1"-1'-0" S-DET416



**16 DETAIL AT 12" CMU**  
1"-1'-0" S-DET543

**Kroger**  
KROGER  
STORE #473  
2013 UNIVERSITY AVENUE  
OXFORD, MISSISSIPPI 38655  
A DEVELOPMENT OF THE KROGER COMPANY

**naos**  
Naos Design Group Of Mississippi, PLLC.  
MARC BREETZ, ARCHITECT  
645 Lakeland East Drive Suite 101  
Flowood, Mississippi 39232  
(p) 303.759.5777  
(f) 720.360.4281  
ARCHITECT OF RECORD

**CDS**  
COMMERCIAL DESIGN SYSTEMS, INC.  
13825 SW GALLBREATH DRIVE  
SHERWOOD, OREGON 97140  
503.855.7000 (p) 503.855.8902  
INTERIOR DECOR

**Pickering**  
Pickering Firm, Inc.  
Architecture - Engineering  
Planning - Surveying  
6775 Lenox Center Court, Suite 300  
Memphis, TN 38115  
901.726.0810  
ENGINEER OF RECORD:  
STRUCTURAL  
MECHANICAL  
ELECTRICAL  
CIVIL ENGINEER

**V-SOFT**  
INFRASTRUCTURE  
11280 CHESTER ROAD  
CINCINNATI, OH 45240  
T: 513-900-3819  
LOW VOLTAGE

**telgian**  
TELGIAN CORPORATION  
10230 SOUTH 50TH PLACE  
SUITE 100  
PHOENIX, AZ 85044  
T: (677) 836-4426  
HTTP://WWW.TELGIAN.COM  
FIRE PROTECTION

**ISSUE LOG**

NO.	REV.	DESCRIPTION	DATE
1		PERMIT SET	12/06/18
2		BID SET	03/21/19

JOB NO. 2019041 SCALE AS SHOWN SHEET NO. **S3.4**  
FRAMING SECTIONS AND DETAILS