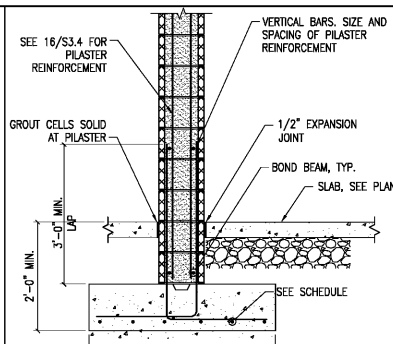
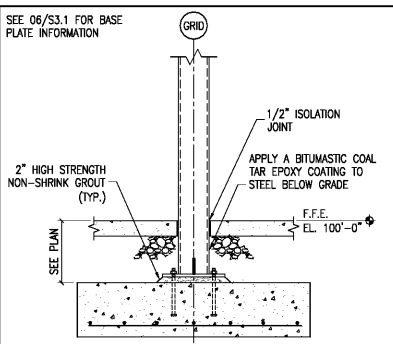


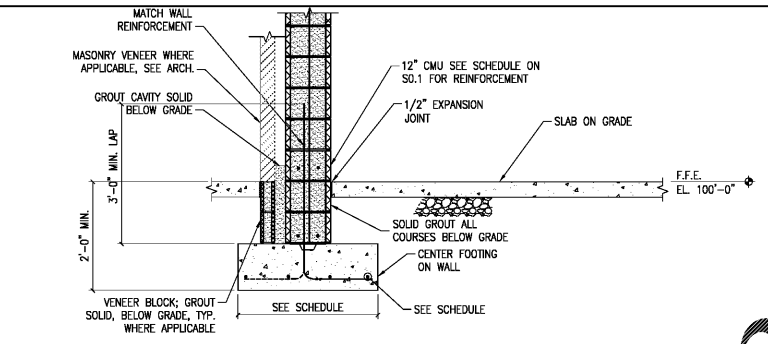
01 SECTION AT TYPICAL EXTERIOR FOOTING - 8" CMU
3/4"=1'-0" S-DET002



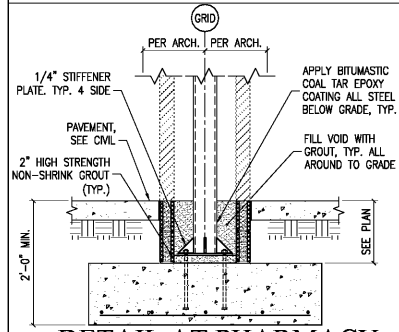
02 SECTION AT 12" CMU
3/4"=1'-0" S-DET008



03 INTERIOR COLUMN FTG
3/4"=1'-0" S-DET032



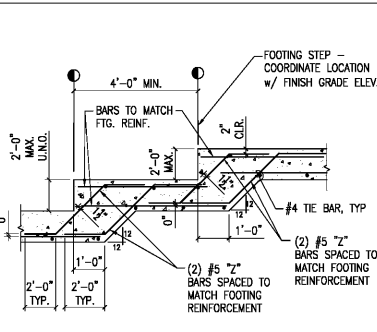
04 SECTION AT TYPICAL EXTERIOR FOOTING - 12" CMU
3/4"=1'-0" S-DET004



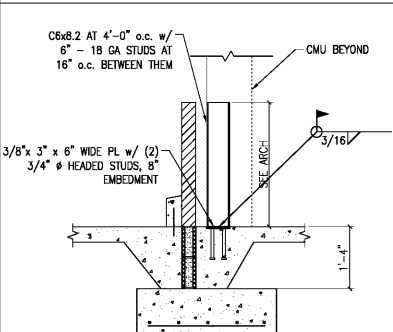
05 CANOPY
3/4"=1'-0" S-DET035

06 BASE PLATE SCHEDULE
1/2"=1'-0" S-DET013

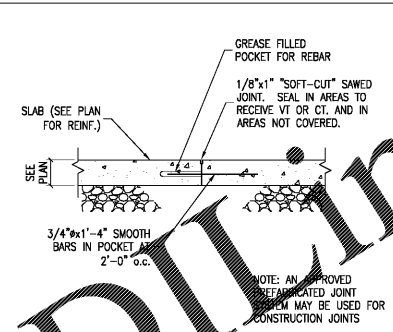
COLUMN	BASE PL. SIZE	X-DIMENSION	Y-DIMENSION	A.B. SIZE & NO.
HSS 4x4	3/4"x12"x12"	4"	4"	(4) 3/4"x9"
HSS 6x6	1"x14"x14"	5"	5"	(4) 3/4"x9"
HSS 8x6	SEE 11/S3.1 FOR BASE PLATE AT HSS 8x6 COLUMN			



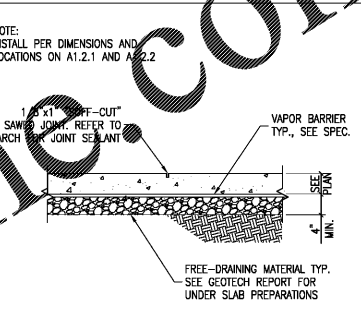
07 TYP. STEPPED FOOTING
1/2"=1'-0" S-DET005



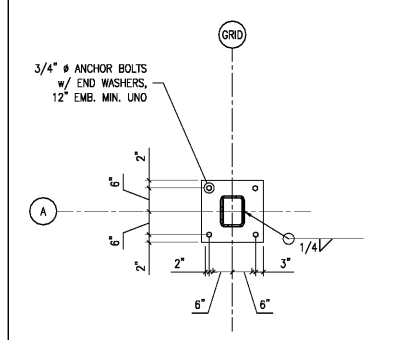
08 SECTION AT WINDOW
3/4"=1'-0" S-DET019



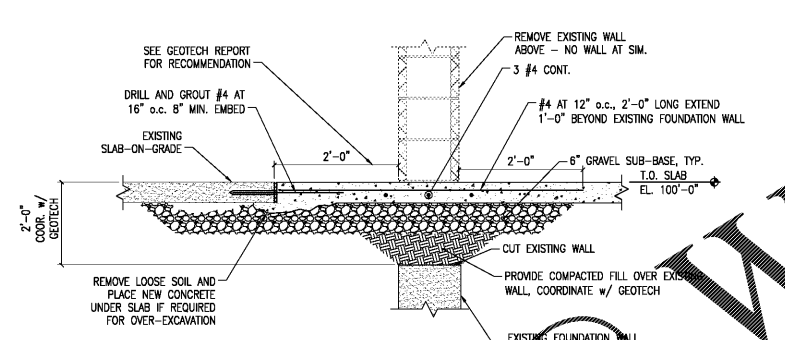
09 TYP. CONSTRUCT. JOINT
1"=1'-0" S-DET102



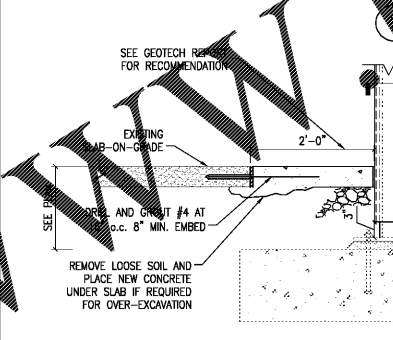
10 TYP. CONTROL JOINT
1"=1'-0" S-DET031



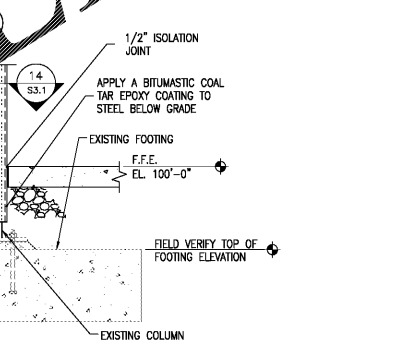
11 BASE PLATE DETAIL
3/4"=1'-0" S-DET541



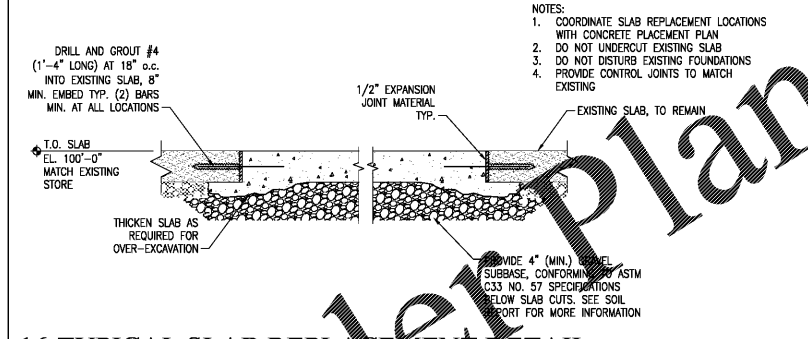
12 SLAB SECTION AT EXPANSION
1"=1'-0" S-DET022



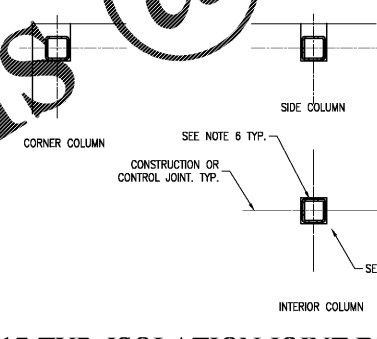
13 COLUMN SECTION AT EXPANSION
1"=1'-0" S-DET519



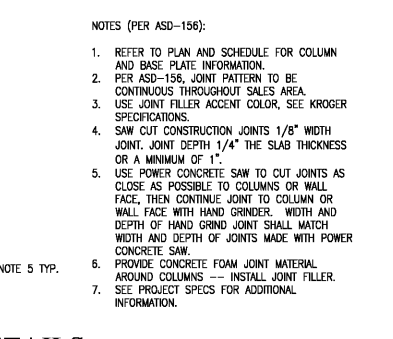
14 REINFORCEMENT OF EXISTING COLUMN
3"=1'-0" S-DET522



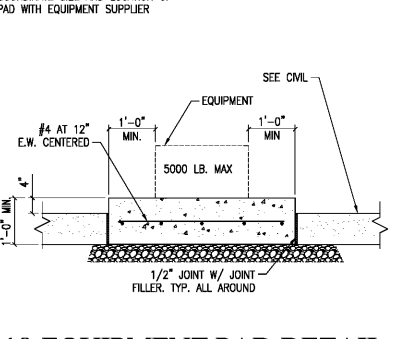
16 TYPICAL SLAB REPLACEMENT DETAIL
1"=1'-0" S-DET028



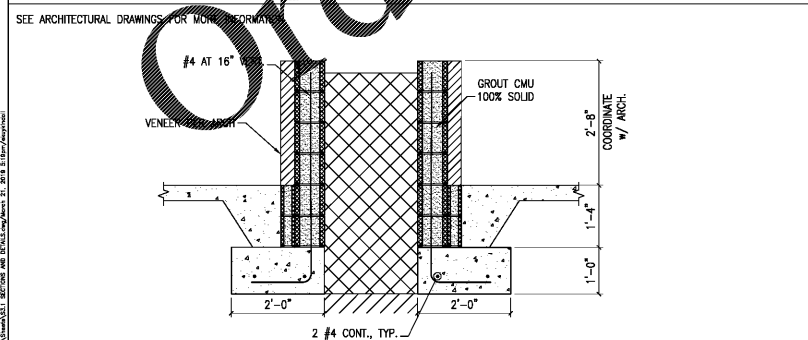
17 TYP. ISOLATION JOINT DETAILS
1/2"=1'-0" S-DET013



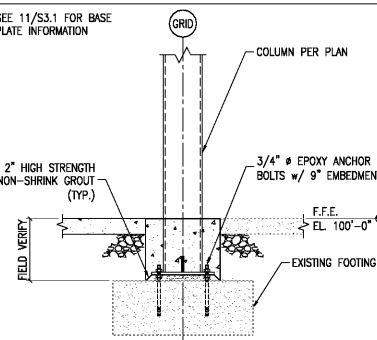
18 EQUIPMENT PAD DETAIL
3/4"=1'-0" S-DET028



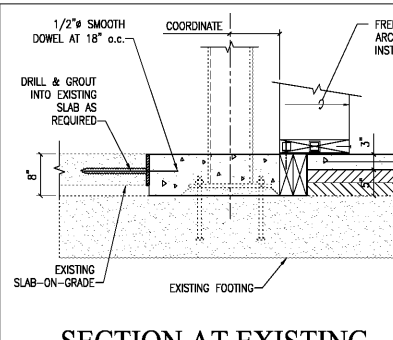
19 SECTION AT 8" CMU
3/4"=1'-0" S-DET008



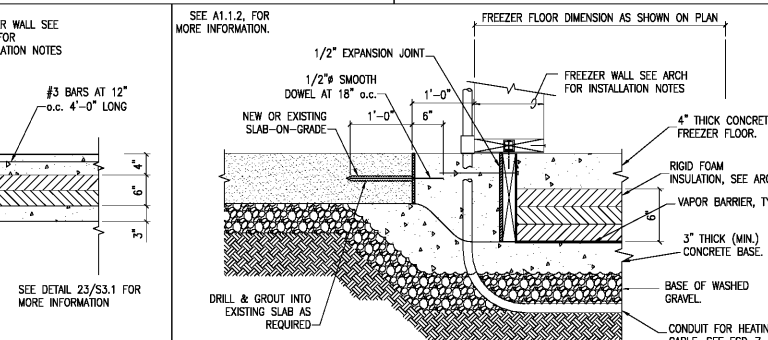
20 PLANTER FOUNDATION
3/4"=1'-0" S-DET530



21 DETAIL
3/4"=1'-0" S-DET548



22 SECTION AT EXISTING COLUMN WITH FREEZER SLAB
1"=1'-0" S-DET551



23 SECTION AT EXISTING FREEZER SLAB
1"=1'-0" S-DET550

KROGER
STORE #473
2013 UNIVERSITY AVENUE
OXFORD, MISSISSIPPI 38655
A DEVELOPMENT OF THE KROGER COMPANY

Naos Design Group Of Mississippi, PLLC.
MARC BREETZ, ARCHITECT
645 Lakeland East Drive Suite 101
Flowood, Mississippi 39232
(p) 303.759.5777
(f) 720.360.4281
ARCHITECT OF RECORD

12-06-2018

CDS COMMERCIAL DESIGN SYSTEMS, INC.
13825 SW GALLERHEATH DRIVE
SHERWOOD, OREGON 97140
503.855.7000 (p)503.855.8902
INTERIOR DECOR

Pickering Firm, Inc.
Architecture - Engineering
Planning - Surveying
6775 Lenox Center Court, Suite 300
Memphis, TN 38115
901.726.8810
ENGINEER OF RECORD:
STRUCTURAL
MECHANICAL
ELECTRICAL
CIVIL ENGINEER

V-SOFT INFRASTRUCTURE
11280 CHESTER ROAD
CINCINNATI, OH 45248
T: 513-900-3810
LOW VOLTAGE

telgian
TELGIAN CORPORATION
10230 SOUTH 50TH PLACE
SUITE 100
PHOENIX, AZ 85044
T: (602) 836-4426
HTTP://WWW.TELGIAN.COM
FIRE PROTECTION

ISSUE LOG

NO.	REV.	DESCRIPTION	DATE
1		PERMIT SET	12/06/18
2		BID SET	03/21/19

JOB: 2019041 SCALE: AS SHOWN
SHEET NO.
S3.1
SECTIONS AND DETAILS

Order Plans @ WWW.DIPLINE.COM