



KROGER
STORE #473

2013 UNIVERSITY
AVENUE
OXFORD, MISSISSIPPI
38655

A DEVELOPMENT OF
THE KROGER COMPANY

naos

Naos Design
Group Of
Mississippi,
PLLC.

MARC BREETZ,
ARCHITECT

645 Lakeland East Drive
Suite 101
Flowood, Mississippi 39232
(p) 303.759.5777
(f) 720.360.4281

ARCHITECT OF RECORD



CDS
COMMERCIAL DESIGN SYSTEMS,
INC.

13825 SW GAL BREATH DRIVE
SHERWOOD, OREGON 97140
503.885.7000 (P) 503.625.8002

INTERIOR DESIGNER



Pickering Firm, Inc.
Architecture - Engineering
Planning - Surveying

6775 Lenox Center Court, Suite 300
Memphis, TN 38115
901.728.8815

ENGINEER OF RECORD:
STRUCTURAL
MECHANICAL
ELECTRICAL
CIVIL ENGINEER



V-SOFT
INFRASTRUCTURE

1500 CHESTER ROAD
CINCINNATI, OH 45216
T: 513-578-3009

LOW VOLTAGE



TELGIAN CORPORATION

10230 SOUTH 56TH PLACE
SUITE 100
PHOENIX, AZ 85044
T: (877) 835-4428
HTTP://WWW.TELGIAN.COM
FIRE PROTECTION

ISSUE LOG

NO.	REV.	DESCRIPTION	DATE
1	-	PERMIT SET	12/06/18
2	-	BID SET	03/21/19

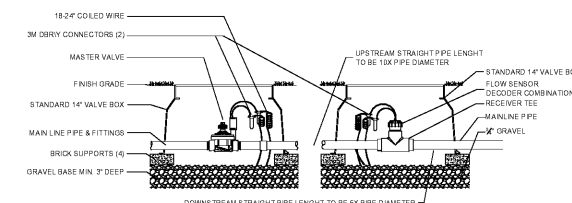
JOB: SCALE:
2019041 1" = 20'

SHEET NO.

IR1.4

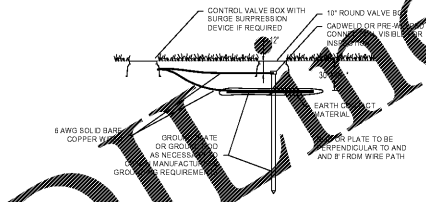
IRRIGATION PLAN AND DETAILS

COPYRIGHT © 2018 NAOS DESIGN GROUP OF MISSISSIPPI, PLLC. THESE DRAWINGS OR PORTIONS THEREOF MAY NOT BE REPRODUCED IN ANY FORM OR BY ANY METHOD, FOR ANY PURPOSE, WITHOUT PRIOR WRITTEN CONSENT FROM NAOS.

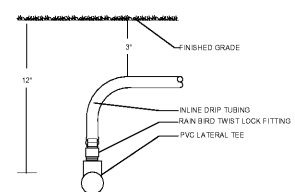


11 MASTER VALVE FLOW SENSOR

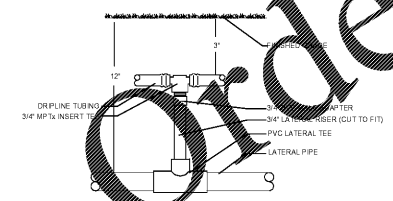
SIDE VIEW



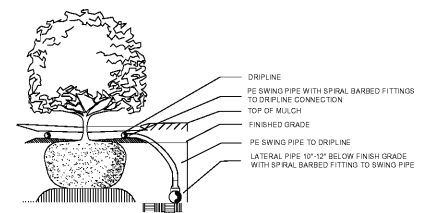
12 TWO-WIRE GROUNDING POINT DETAIL



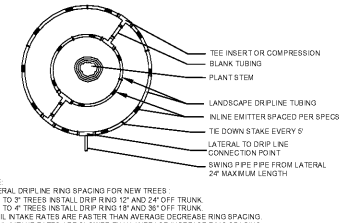
13 START CONNECTION SUB-GRADE DRIPLINE (WITH PVC RISER)



14 START CONNECTION SUB-GRADE DRIPLINE (WITH PVC RISER)

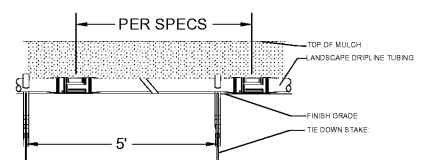


15 TREE DRIP RING TO LATERAL CONNECTION



16 TREE DRIP RING

NOTE:
GENERAL DRIPLINE RING SPACING FOR NEW TREES:
2' 10\"/>



17 DRIPLINE ON GRADE WITH MULCH COVER