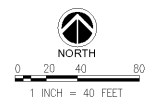
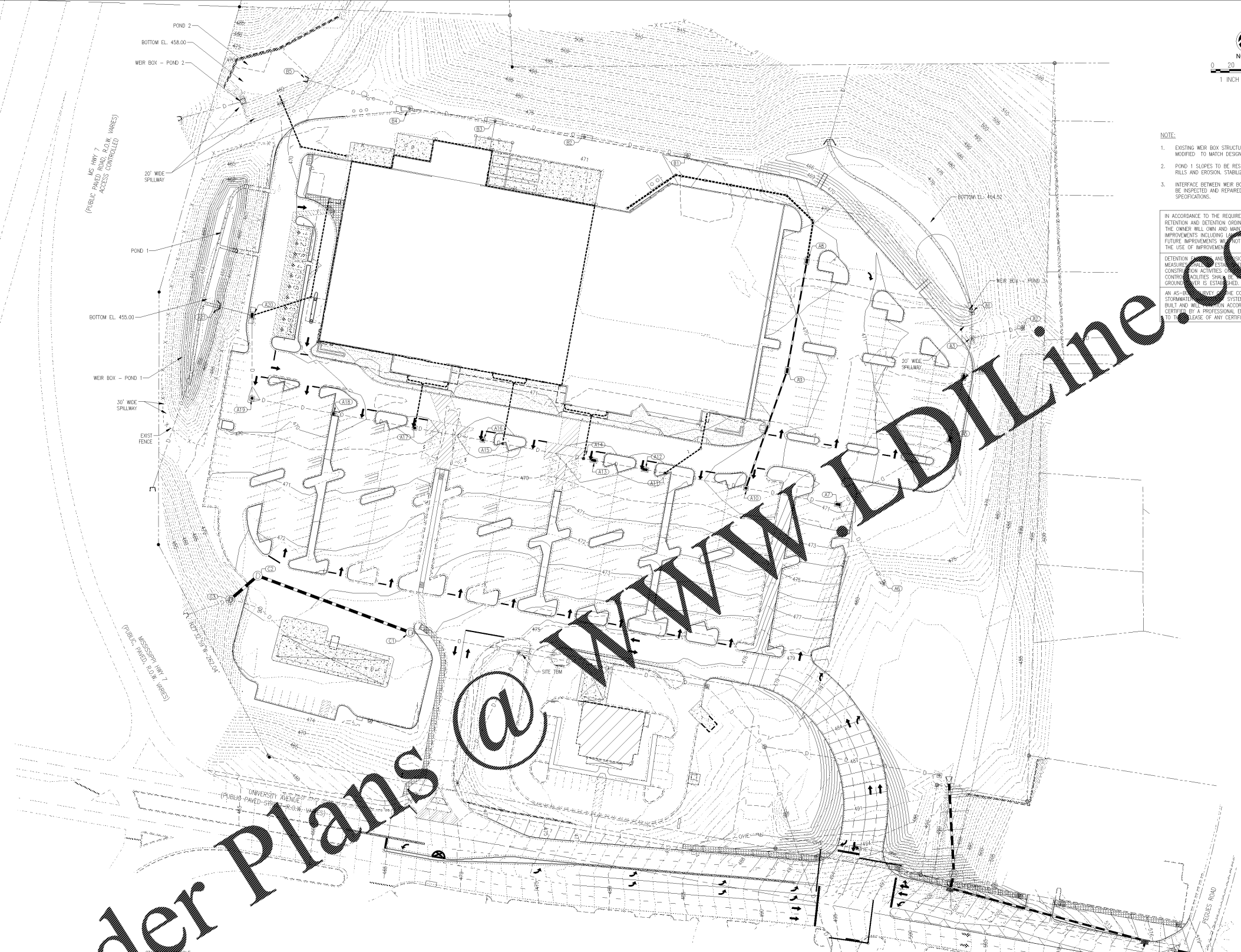


Order Plans @ www.dilvine.com



- NOTE:
- EXISTING WEIR BOX STRUCTURES TO BE REPAIRED AND MODIFIED TO MATCH DESIGN CONDITIONS SHOWN ABOVE.
 - POND 1 SLOPES TO BE RESEDED AS NEEDED TO FIX RILLS AND EROSION. STABILIZE WITH SOLID SOIL.
 - INTERFACE BETWEEN WEIR BOXES AND OUTLET PIPES TO BE INSPECTED AND REPAIRED PER CONSTRUCTION SPECIFICATIONS.

IN ACCORDANCE TO THE REQUIREMENTS OF PERFORMA RETENTION AND DETENTION ORDINANCE IN PARAGRAPHS 96-112, THE OWNER WILL OWN AND MAINTAIN ALL STRUCTURES AND IMPROVEMENTS INCLUDING, BUT NOT LIMITED TO, ANY FUTURE IMPROVEMENTS WHICH MAY BE REQUIRED TO MAINTAIN THE USE OF IMPROVEMENTS.

DETENTION FACILITIES AND EROSION & SEDIMENT CONTROL MEASURES SHALL BE ESTABLISHED PRIOR TO ANY OTHER CONSTRUCTION ACTIVITIES OTHER THAN EROSION & SEDIMENT CONTROL FACILITIES SHALL BE ESTABLISHED UNTIL PERMANENT GROUND COVER IS ESTABLISHED.

AN AS-BUILT SURVEY FOR THE COMPLETE STORM SEWER AND STORMWATER COLLECTION SYSTEM, DEMONSTRATING IT WAS BUILT AND MAINTAINED ACCORDING TO DESIGN AND CERTIFIED BY A PROFESSIONAL ENGINEER IS REQUIRED PRIOR TO THE RELEASE OF ANY CERTIFICATE OF OCCUPANCY.



2013 UNIVERSITY AVENUE
OXFORD, MISSISSIPPI 38655

A DEVELOPMENT OF THE KROGER COMPANY

naos
Naos Design Group Of Mississippi, PLLC.

MARC BREETZ, ARCHITECT
645 Lakeland East Drive Suite 101
Flowood, Mississippi 39232
(p) 303.759.5777 (f) 720.360.4281
ARCHITECT OF RECORD

CDS
COMMERCIAL DESIGN SYSTEMS, INC.
13825 SW GALBREATH DRIVE SHERWOOD, OREGON 97140
503.885.7900 (P)503.825.8802
INTERIOR DECOR

Pickering
Pickering Firm, Inc.
Architecture - Engineering
Planning - Surveying
6775 Lenox Center Court, Suite 300 Memphis, TN 38115
901.728.0810
ENGINEER OF RECORD:
STRUCTURAL
MECHANICAL
ELECTRICAL
CIVIL ENGINEER

V-SOFT
INFRASTRUCTURE
11260 CHESTER ROAD CINCINNATI, OH 45246
T: 513-898-3819
LOW VOLTAGE

telgian
TELGIAN CORPORATION
10230 SOUTH 50TH PLACE SUITE 100 PHOENIX, AZ 85044
T: (677) 838-4428
HTTP://WWW.TELGIAN.COM
FIRE PROTECTION

ISSUE LOG

NO.	REV.	DESCRIPTION	DATE
1	-	PERMIT SET	12/06/18
2	-	BID SET	03/21/19

JOB: 2018041 SCALE: 1" = 40'

SHEET NO. **C5.1.4**

POND DETAILS

