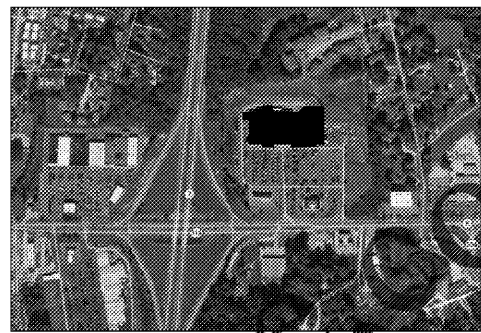




EXPANSION OF STORE NO. V-473

3013 UNIVERSITY AVENUE
OXFORD, MISSISSIPPI 38655



VICINITY MAP
SCALE: NOT TO SCALE



KROGER
STORE #473

2013 UNIVERSITY AVENUE
OXFORD, MISSISSIPPI 38655

A DEVELOPMENT OF
THE KROGER COMPANY

naos
Naos Design
Group Of
Mississippi,
PLLC.

MARC BREETZ,
ARCHITECT

645 LakeLand East Drive
Suite 101
Flowood, Mississippi 39232
(p) 303.759.5777
(f) 720.360.4281

ARCHITECT OF RECORD



13925 SW GALEBRATH DRIVE
SHERWOOD, OREGON 97140
503.855.7000 (P) 503.855.8002

INTERIOR DECOR



Pickering Firm, Inc.
Architecture - Engineering
Planning - Surveying
8775 Lenox Center Court, Suite 300
Memphis, TN 38115
901.726.8110

ENGINEER OF RECORD:
STRUCTURAL
MECHANICAL
ELECTRICAL
CIVIL ENGINEER



1200 CHESTER ROAD
CENTRAL, OH 45012
T: 503-569-3009

LOW VOLTAGE



telgian CORPORATION
10230 SOUTH SOTH PLACE
SUITE 100
PHOENIX, AZ 85044
T: (677) 935-4428
HTTP://WWW.TELGIAN.COM
FIRE PROTECTION

ISSUE LOG

NO.	REV.	DESCRIPTION	DATE
1	-	PERMIT SET	12/05/18
2	-	BID SET	03/21/19

JOB	SCALE
2018041	NOT TO SCALE

SHEET NO.

G0.1.1
COVER SHEET, DRAWING
INDEX AND CONTACT LIST

SHEET INDEX

GENERAL					ARCHITECTURAL					INTERIORS					PLUMBING					TELECOMMUNICATIONS									
SHEET #	SHEET NAME	ORIGINAL ISSUE DATE	ISSUE NUMBER	REVISION DESCRIPTION	REVISION ISSUE DATE	SHEET #	SHEET NAME	ORIGINAL ISSUE DATE	ISSUE NUMBER	REVISION DESCRIPTION	REVISION ISSUE DATE	SHEET #	SHEET NAME	ORIGINAL ISSUE DATE	ISSUE NUMBER	REVISION DESCRIPTION	REVISION ISSUE DATE	SHEET #	SHEET NAME	ORIGINAL ISSUE DATE	ISSUE NUMBER	REVISION DESCRIPTION	REVISION ISSUE DATE						
G0.1.1	COVER SHEET, DRAWING INDEX & CONTACT LIST	12/05/2018	2	BID SET	3/21/19	AD1.1.1	PARTIAL DEMOLITION FLOOR PLAN WEST	12/05/2018	2	BID SET	3/21/19	I1.1.0	OVERALL FIXTURE PLAN	12/05/2018	2	BID SET	3/21/19	P01.1.1	PARTIAL PLUMBING SANITARY EXISTING DEMOLITION PLAN WEST	12/05/2018	2	BID SET	3/21/19	TD1.1.1	PARTIAL PHONE, DATA, SPECIALTY PLAN WEST	12/05/2018	2	BID SET	3/21/19

FIRE PROTECTION
TELGIAN ENGINEERING & CONSULTING
800 CIRCLE 15 PARKWAY SOUTH EAST, SUITE 680
ATLANTA, GA 30339
CONTACT: LOUIS BURTON JR
PHONE: (480) 292-8027
E-MAIL: LBURTON@TELGIAN.COM

LOW VOLTAGE
VSOFT INFRASTRUCTURE
11280 CHESTER ROAD
CINCINNATI, OHIO 45246
CONTACT: TROY TRIPP
PHONE: (513) 896-3819
E-MAIL: TROY.TRIPP@MOTISOLUTIONS.COM

MEP ENGINEER
PICKERING FIRM, INC
6775 LENOX CENTER COURT, SUITE 300
MEMPHIS, TENNESSEE 38115
CONTACT: MIKE BILDERBECK
PHONE: (901) 726.0810
E-MAIL: MBILDERBECK@PICKERINGFIRM.COM

STRUCTURAL ENGINEER
PICKERING FIRM, INC
6775 LENOX CENTER COURT, SUITE 300
MEMPHIS, TENNESSEE, 38115
CONTACT: YOUSEF SALEH
PHONE: (901) 726.0810
E-MAIL: YSALEH@PICKERINGFIRM.COM

CIVIL ENGINEER
PICKERING FIRM, INC
6775 LENOX CENTER COURT, SUITE 300
MEMPHIS, TENNESSEE, 38115
CONTACT: CARA MARTIN
PHONE: (901) 726.0810
E-MAIL: CMARTIN@PICKERINGFIRM.COM

INTERIOR DECOR
COMMERCIAL DESIGN SYSTEMS, INC.
12925 SW GALEBRATH DR.
SHERWOOD, OR 97140
CONTACT: SHAWNEE FISHER
PHONE: (503) 885-7000
E-MAIL: SHAWNEE@CDSANDOIT.COM

ARCHITECT
NAOS DESIGN GROUP OF MISSISSIPPI, PLLC.
645 LAKE LAND EAST DRIVE, SUITE 101
FLOWOOD, MISSISSIPPI 39232
PHONE: (303) 759-5777
E-MAIL: MARCB@NAOSDG.COM

OWNER
KROGER
800 RIDGE LAKE BLVD.
MEMPHIS, TN 38120
CONTACT: ANDREW WARD
PHONE: (901) 765-4203
E-MAIL: ANDREW.WARD@KROGER.COM

Copyright © 2018 Naos Design Group of Mississippi, PLLC. All rights reserved. This drawing is the property of Naos Design Group of Mississippi, PLLC. It is to be used only for the project and location specified on this drawing. No part of this drawing may be reproduced or transmitted in any form or by any means, electronic or mechanical, including photocopying, recording, or by any information storage and retrieval system, without prior written consent from Naos Design Group of Mississippi, PLLC.